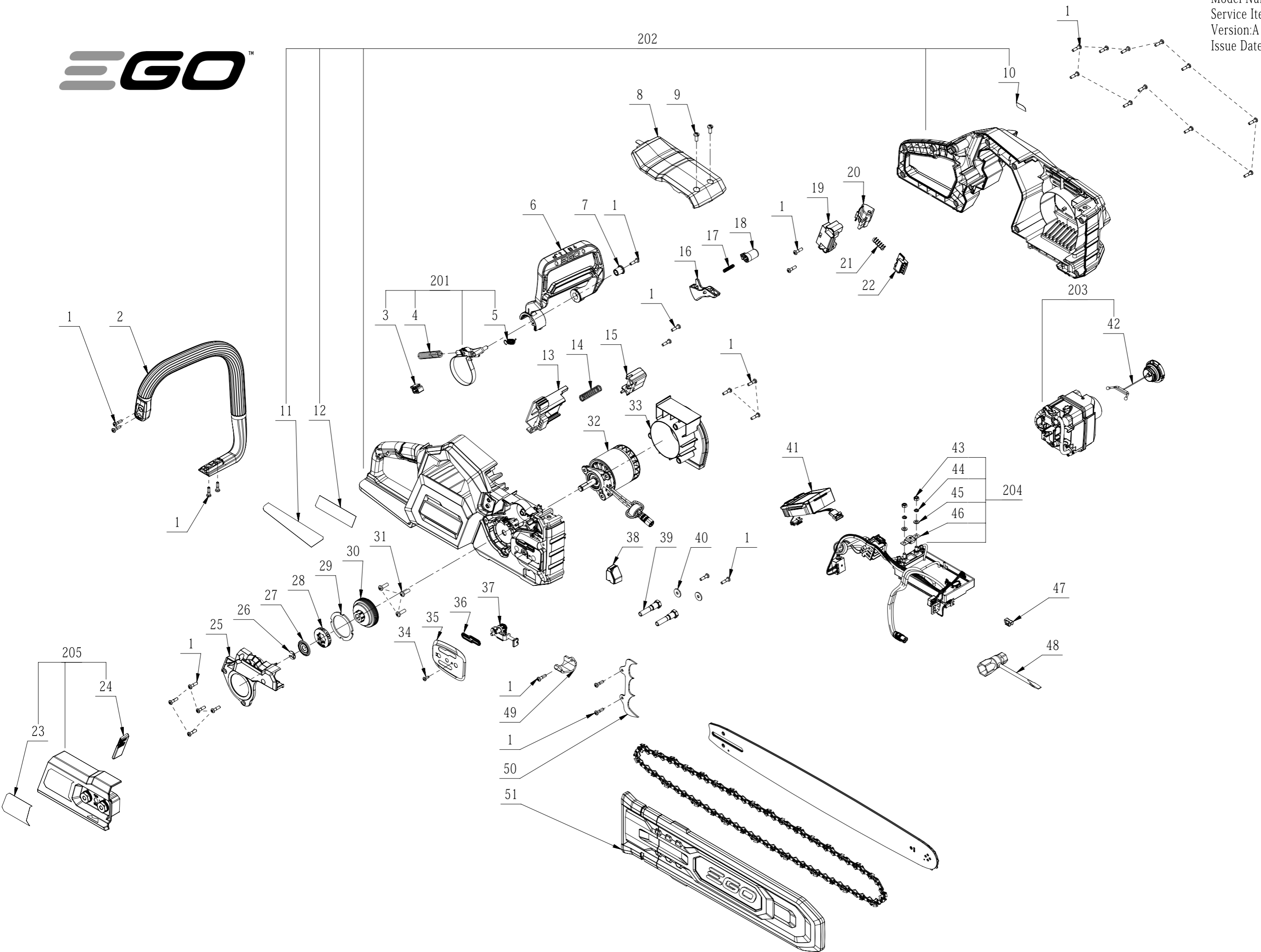




Product Description: Chain Saw  
Model Number: CS2000E  
Service Item Number: F840041004S01  
Version: A  
Issue Date: 2023/08/01





**BILL OF MATERIALS**

CS2000E Chainsaw

Index Nr.	Art. Nr.	Beschreibung EN	Beschreibung DE	Tls	Supersession	QTY in machine	Torque (Nm)	MPQ	Repair Time (min)
1	5620479001	Screw	Schraube			33		10	1
2	3135190001	Front Handle				1		1	5
3	3521237001	Fixed Unit				1		1	10
4	3660803001	Compression Spring	Druckfeder			1		10	10
5	3660802001	Tension Spring	Zugfeder			1		10	10
6	2850741001	Brake Handle Assembly				1		1	10
7	3580556001	Bushing				1		1	2
8	3323695001	Top Cover				1		1	2
9	5620566001	Hexalobular Socket Screw				2		2	1
10	2246036006	Nameplate				1		1	0
11	2246036010	Nameplate				1		1	0
12	2246036009	Nameplate				1		1	0
13	3132739001	Push-out Lever Bracket				1		1	10
14	3660979001	Compression Spring	Druckfeder			1		10	10
15	3131427001	Sliding Block	Sliding Block			1		1	10
16	2850767001	Switch Trigger Set				1		1	10
17	3660427002	Spring	Feder			1		10	10
18	3135018001	Lock off Button				1		1	10
19	3127507001	Support	Halter Akkuentriegelung			1		1	10
20	3127498001	Power Pack Button	Akku-Entriegelungshebel			1		1	10
21	3660013001	Spring1				1			10
22	3127497001	Power Pack Button	Akku-Entriegelungshebel			1		1	10
23	2246036008	Nameplate				1		1	0
24	3135070001	Baffle				1		1	5
25	3135189001	Brake Cover Plate				1		1	5
26	5660242001	"E" Ring	E-Ring			1		1	5
27	3709185001	Baffle Piece				1		1	5
28	3556131001	Chain Wheel				1		1	5
29	5690440001	Felt Ring	Dichtung			1		10	5
30	3556112001	Brake Disc				1		1	5
31	5620051010	Screw	Schraube			3		10	1
32	2730415004	DC Motor				1		1	15
33	3135024001	Fan Baffle				1		1	10
34	5610295001	Hexagon Socket Screw				1		1	1
35	3709181001	Protecting Cover Plate				1		1	5
36	3135025001	Rubber Gasket				1		1	5
37	2850738001	Tensioning Subassembly				1		1	10
38	3135013001	Lamp Housing				1		1	10
39	5640539001	Hexagon Head Bolt				2		2	1
40	5650487001	Plain Washer	Scheibe			2		10	1
41	2831964001	LCD Electric Assembly				1		1	15
42	2828587001	Kettle Cover Assembly	Deckel für Öltank			1		10	1
43	5630003003	Hexagon Nut				4			1
44	5650015003	Spring Washer	Feder			2		10	1
45	5650011003	Plain Washer	Scheibe			4		10	1
46	4970355001	Fuse	Sicherung (80A)			1		10	2
47	3703673002	Bits Holder				1		1	1
48	5680375001	Socket Wrench				1		1	1
49	3709191001	Chip Shield				1		1	2
50	3708646001	Wood Teeth				1		1	2
51	3135119001	Sheath				1		1	1
201	2850739001	Brake Assembly				1		1	10
202	2850746002	Housing Assembly				1		1	20
203	2850747001	Kettle Assembly				1		1	15
204	2832038001	Electric Assembly				1		1	20
205	2850582003	Cover Plate Assembly				1		1	2