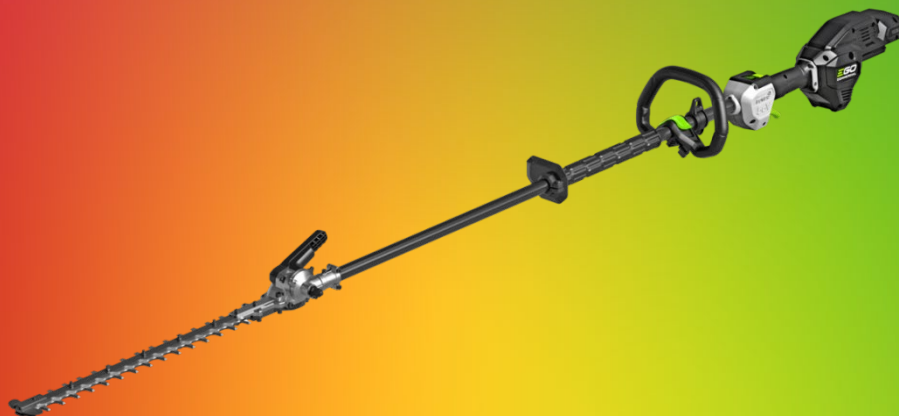




# REPAIR GUIDELINE

## HTX5300-PA

### EGO COMMERCIAL HEDGE TRIMMER



Version: A  
Issue Date: 8/25/2023

NO.	Contents	Page
1	Troubleshooting	3
2	Tool List	4
3	Replace the PCBA	5
4	Replace the Motor	10
5	Replace the Gear Case	12
6	Replace the LCD Assembly	16

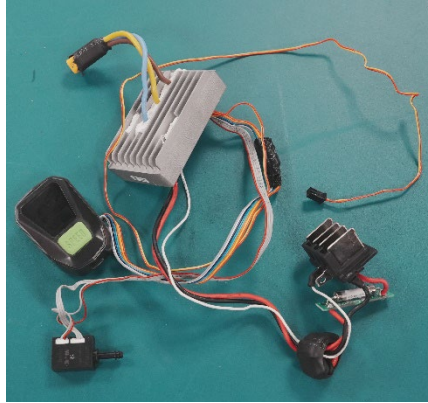
# Troubleshooting

Problem	Possible cause	Fault Position	Test & Solution	Page
Not working	Faulty battery or faulty battery contacts	Battery	Test with a healthy battery.	
	The cables that connect to motor are loose or disconnected from motor.	Cables	check the cable connection with Motor & PCBA	7
	Only running for a few seconds at a time, can get to restart but only runs for a few seconds.	PCBA	Replace the <b>PCBA</b> .	5
	Did not start. when trigger pulled only a metallic click sound	Motor	Replace the <b>Motor</b> .	9
	Pull the trigger, speed change will be displayed on the speed indicator, but the motor does not work	Motor	Replace the <b>Motor</b> .	9
	Speed indicator flashing orange light	Motor / Gear case	Run the tool with the gearbox removed first, if the tool works properly. Replace the <b>Gear case</b> , otherwise replace the <b>Motor</b> .	6/9
	The machine does not work and the indicator light is off	PCBA	Replace the <b>PCBA</b> .	4
Low speed	keep running at low speed	Motor	Replace the Motor.	6
Noise	Noise form the gearbox	Gear case	Add grease, otherwise replace the <b>Gearbox</b> .	9
	Making a really loud abnormal noise from the motor	Motor	Replace the <b>Motor</b> .	6
	Blade bends or makes noise when working	Blade set	Replace the <b>Blade set</b> .	

# Tool List for Repair

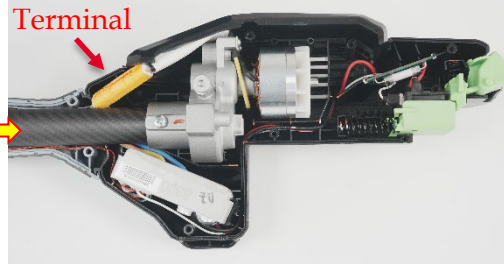
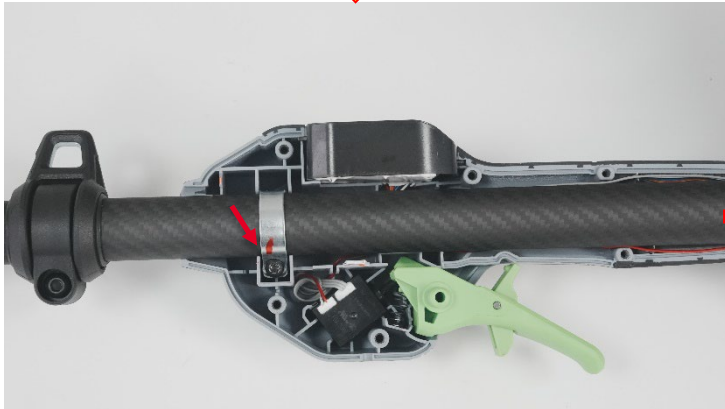
NO.	Tool list	SPEC	Remark
1	Socket wrench	8mm	
2	Torx screwdriver	T10&T15&T20	
3	Inner hex spanner	M8	
4	Screwdriver	2.5 mm	

# Replace the PCBA



*PCBA*

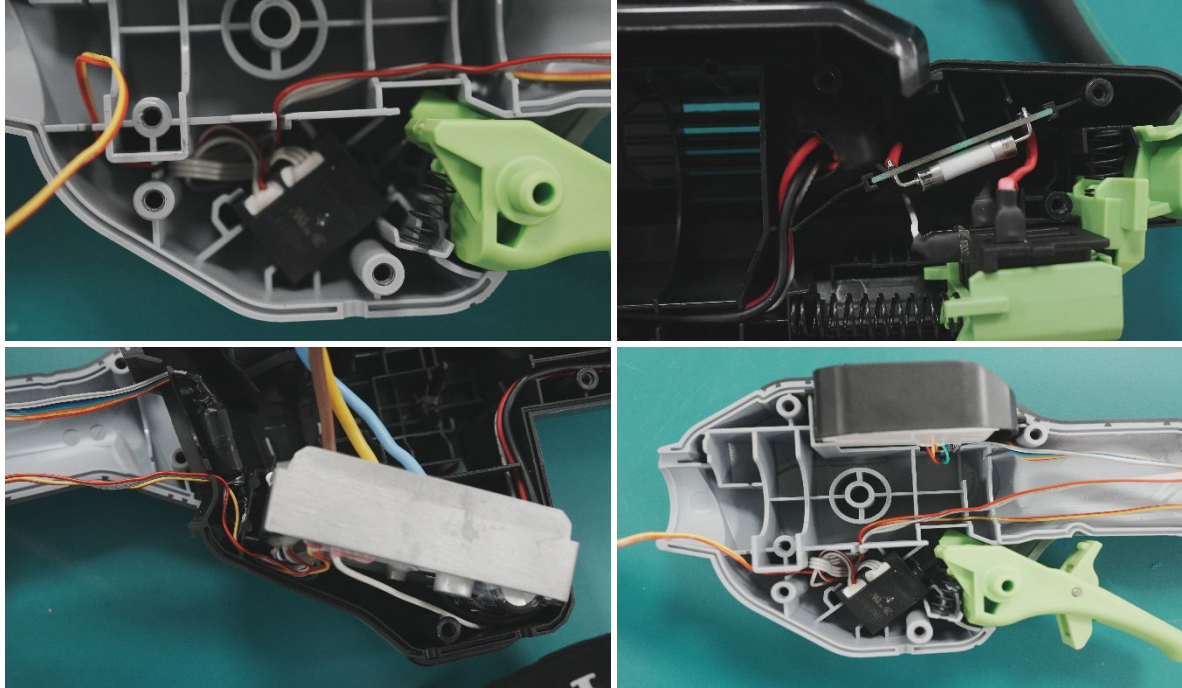
# Replace the PCBA



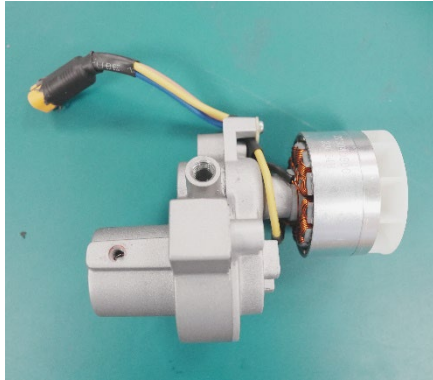
1. Use trox screwdriver(T20&T15&T10) loosen the 16 screws securing the housing and open the housing.
2. Loosen the screw securing the shaft.
3. Unplug the terminal between motor and PCBA. Then remove the shaft and motor.
4. Replace the PCBA.

# Replace the PCBA

1. Please refer to photos for wire routing.



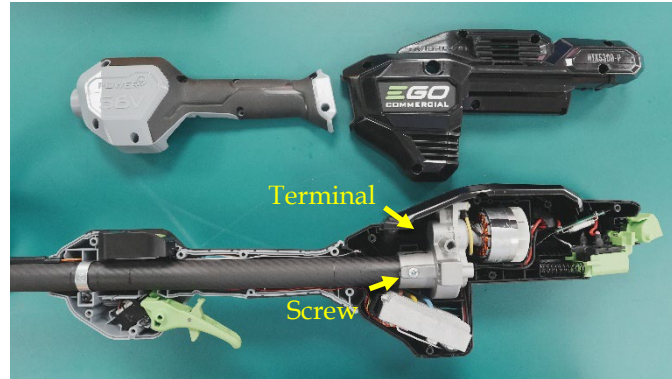
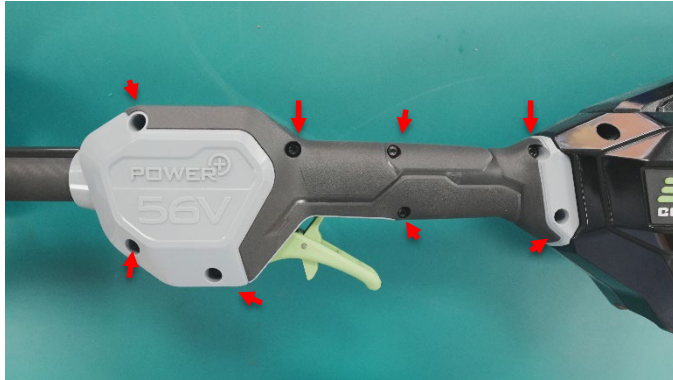
# Replace the Motor



*Motor*

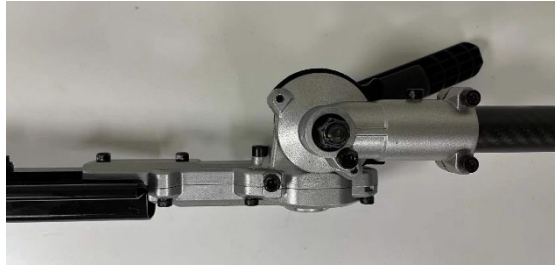


# Replace the Motor



1. Follow the steps to loosen all the screws as shown. Then open the housing.
2. Loosen the screw where fix the shaft and motor. And unplug the terminal between motor and PCBA.
3. Replace the Motor.

# Replace the Gear Case

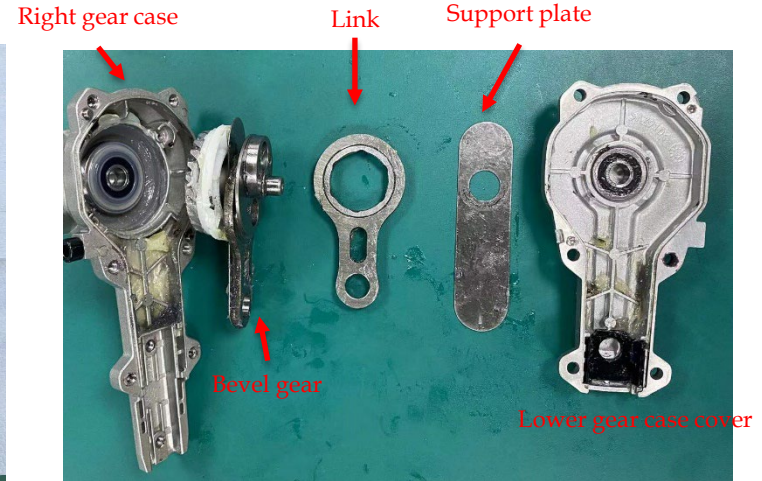
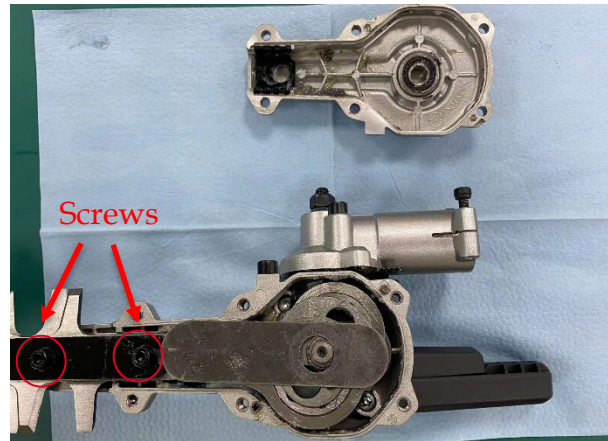
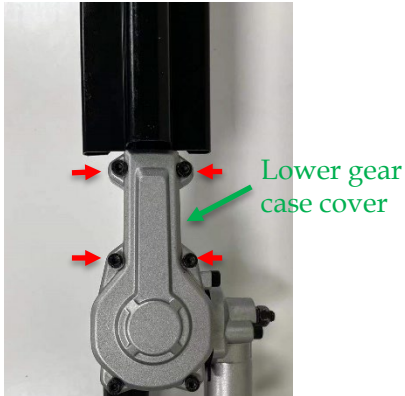


*Gear case assembly*

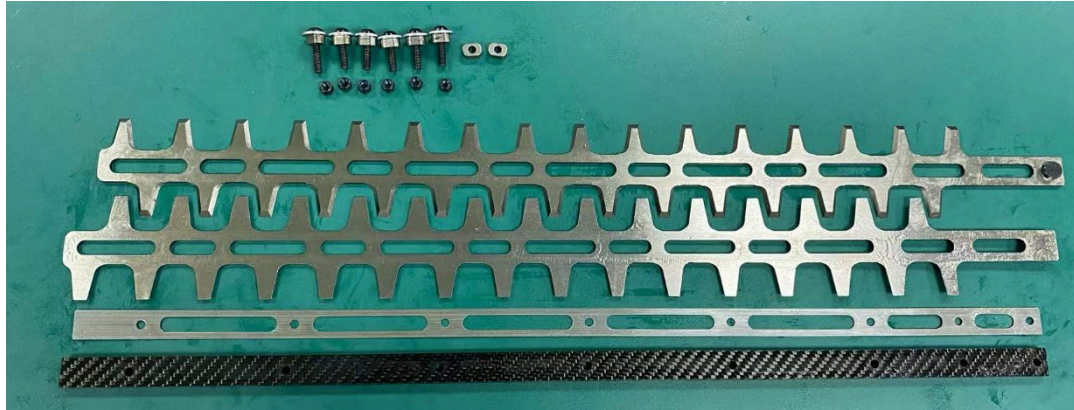
# Replace the Gear Case & Bevel Lever



1. Use torx screwdriver to loosen 3 screws securing the shaft, then remove the shaft.
2. Use hex wrench to loosen 4 screws on the Lower gear case cover and remove it.
3. Loosen the screws securing the blade set and remove blade set.
4. The Right gear case, Bevel gear, Link, Support plate and Lower gear case cover are replaceable.



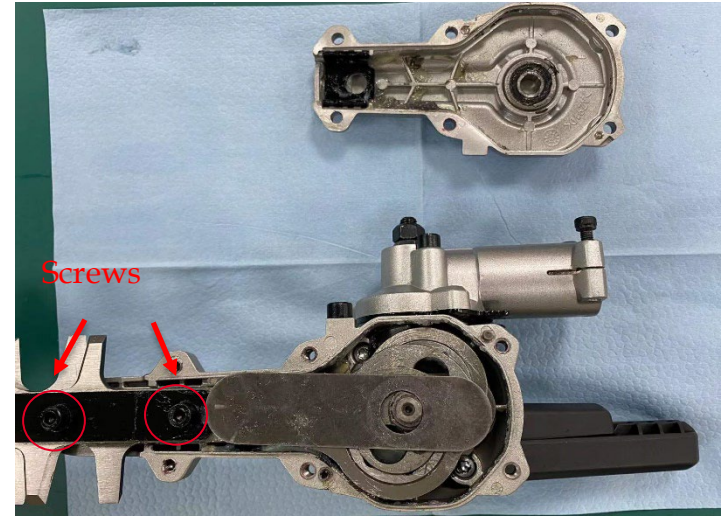
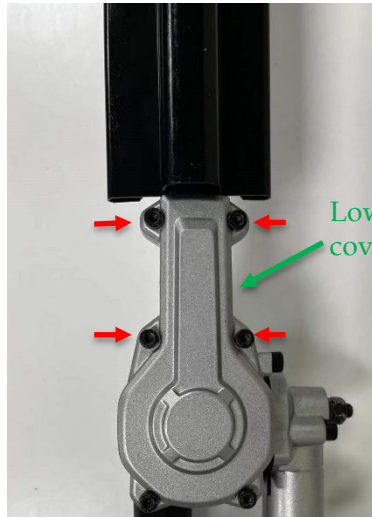
# Replace the Blade Assembly



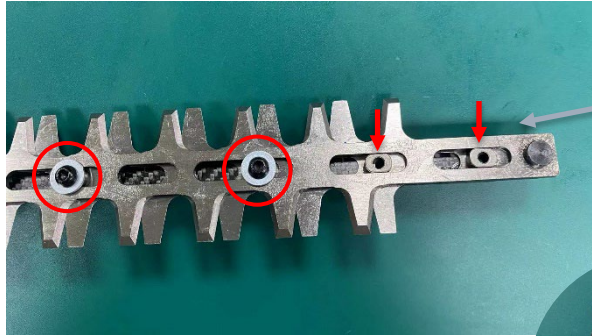
Blade Assembly

# Replace the Blade Assembly

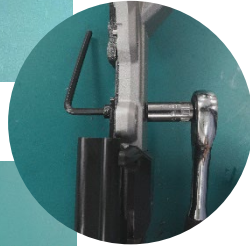
1. Use hex wrench to loosen 4 screws on the Lower gear case cover and remove it.
2. Loosen screws securing the blade set and remove blade set.



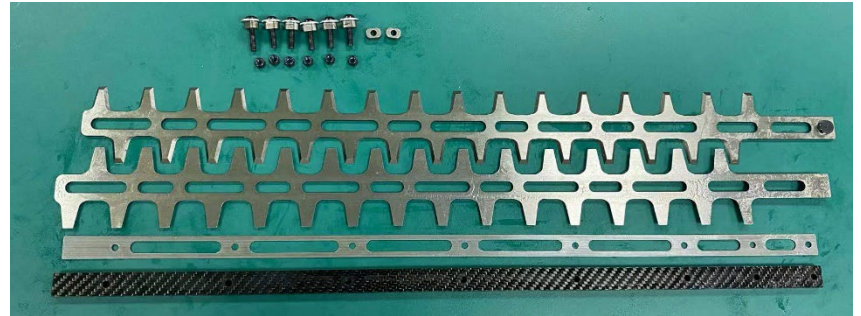
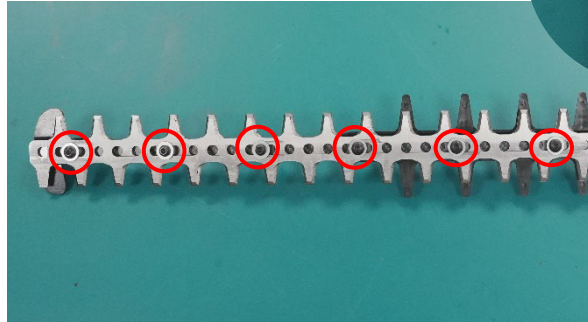
# Replace the Blade Assembly



1. Please pay attention to the care of the bushing and gasket during disassembly.
2. Use the socket wrench and hex wrench to loosen the screw on the blade.



It is recommended to loosen the screw on the blade this way



**CHERVON**<sup>®</sup>  
Better Tools. Better World.

