



REPAIR GUIDELINE

HTX5300-P

EGO COMMERCIAL HEDGE TRIMMER



Version: A
Issue Date: 8/01/2023

NO.	Contents	Page
1	Troubleshooting	3
2	Tool List	4
3	Replace the PCBA	5
4	Replace the Motor	10
5	Replace the Gear Case	12
6	Replace the LCD Assembly	16

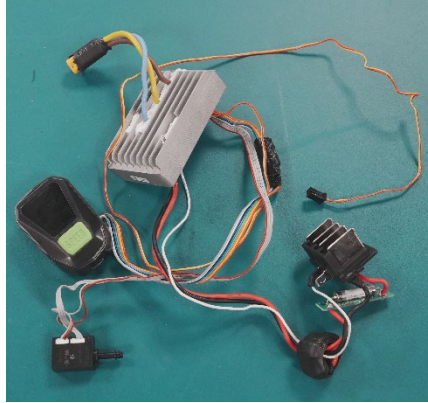
Troubleshooting

Problem	Possible cause	Fault Position	Test & Solution	Page
Not working	Faulty battery or faulty battery contacts	Battery	Test with a healthy battery.	
	The cables that connect to motor are loose or disconnected from motor.	Cables	check the cable connection with Motor & PCBA	7
	Only running for a few seconds at a time, can get to restart but only runs for a few seconds.	PCBA	Replace the PCBA .	5
	Did not start. when trigger pulled only a metallic click sound	Motor	Replace the Motor .	9
	Pull the trigger, speed change will be displayed on the speed indicator, but the motor does not work	Motor	Replace the Motor .	9
	Speed indicator flashing orange light	Motor / Gear case	Run the tool with the gearbox removed first, if the tool works properly. Replace the Gear case , otherwise replace the Motor .	6/9
	The machine does not work and the indicator light is off	PCBA	Replace the PCBA .	4
Low speed	keep running at low speed	Motor	Replace the Motor.	6
Noise	Noise form the gearbox	Gear case	Add grease, otherwise replace the Gearbox .	9
	Making a really loud abnormal noise from the motor	Motor	Replace the Motor .	6
	Blade bends or makes noise when working	Blade set	Replace the Blade set .	

Tool List for Repair

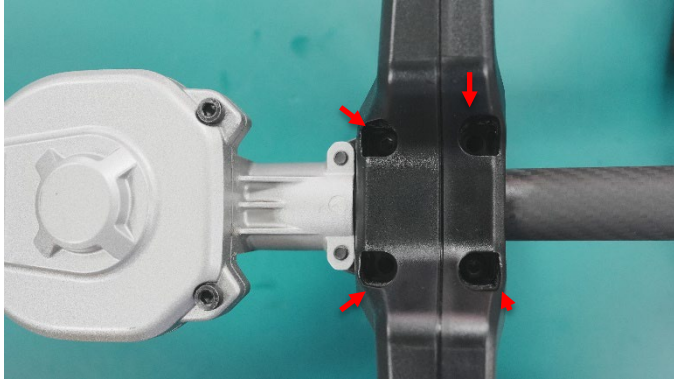
NO.	Tool list	SPEC	Remark
1	Socket wrench	8mm	
2	Torx screwdriver	T10&T15&T20	
3	Hex wrench	M8	
4	Screwdriver	2.5 mm	

Replace the PCBA

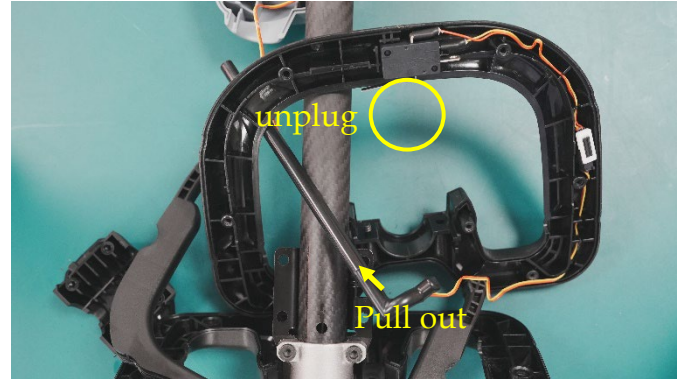
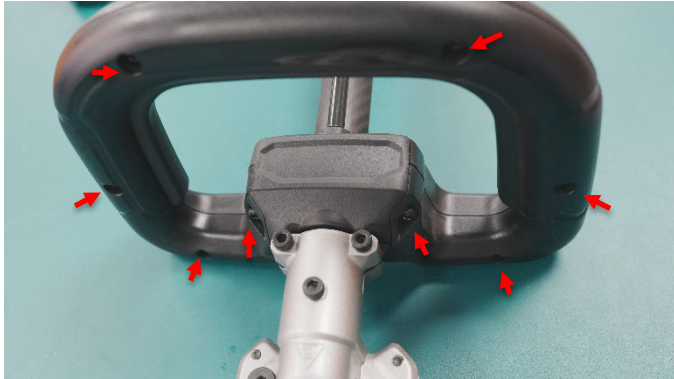


PCBA

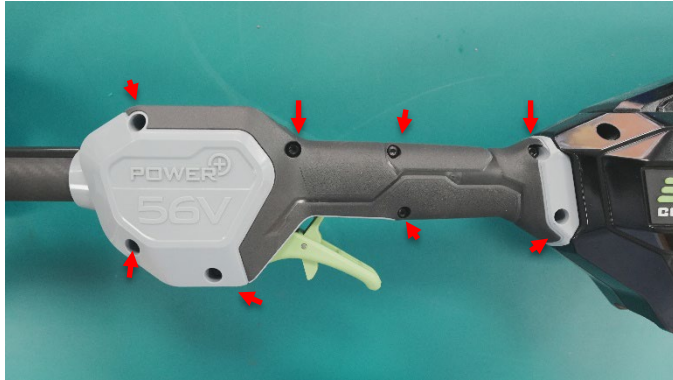
Replace the PCBA



1. Loosen screws at the bottom of the handle. Then loosen the screws on the front side of handle.
2. Unplug the switch and pull out the wire.



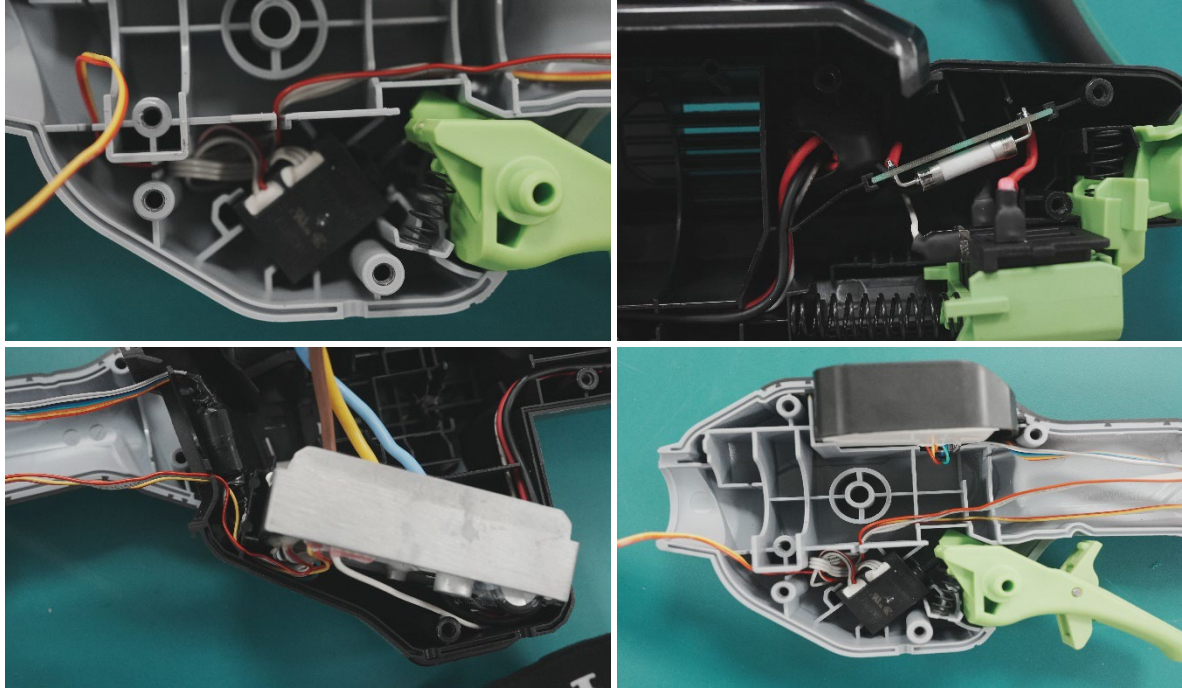
Replace the PCBA



1. Follow the steps to loosen all the screws as shown. Then open the housing.
2. Loosen the screw where fix the shaft and motor. And unplug the terminal between motor and PCBA.
3. Remove the motor and shaft first, then replace the PCBA.

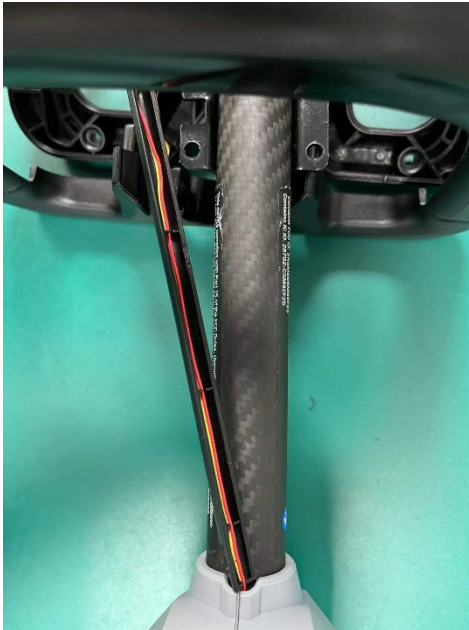
Replace the PCBA

1. Please refer to photos for wire routing.

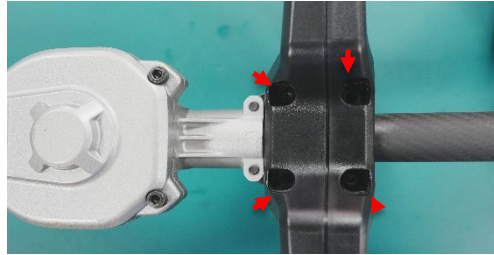
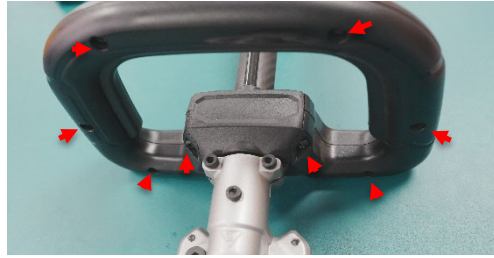
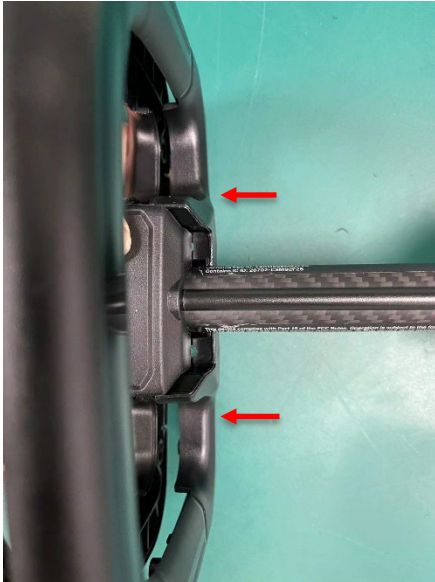


Replace the PCBA

1. First insert the wire in the handle.
2. Hold the front of the handle and put the tube over the shaft.
3. Cover the upper cover.

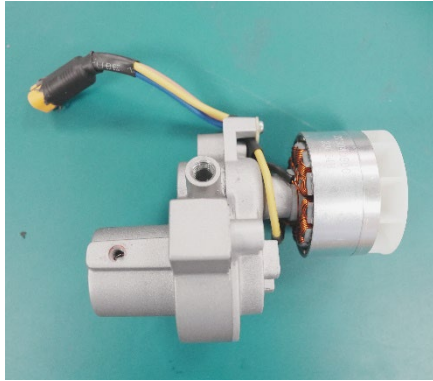


Replace the PCBA



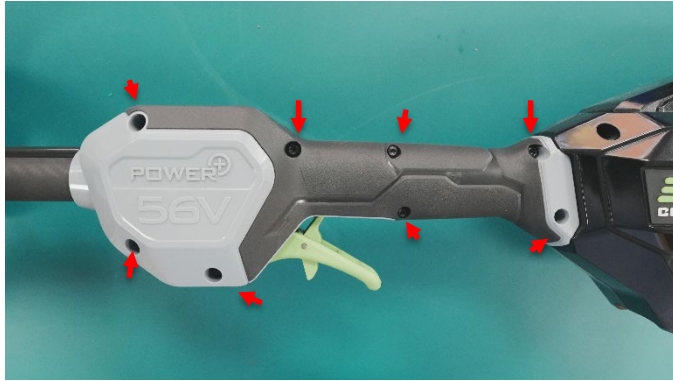
1. Slide the back of the handle into the upper cover and attach it with the front part of the handle
2. Use torx screwdriver(T20) tighten 12 screws.

Replace the Motor



Motor

Replace the Motor



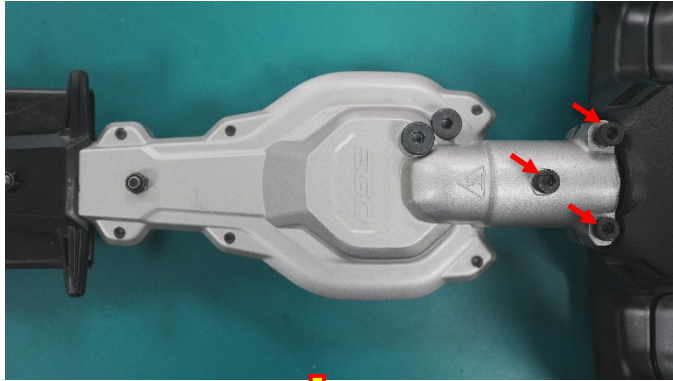
1. Follow the steps to loosen all the screws as shown. Then open the housing.
2. Loosen the screw where fix the shaft and motor. And unplug the terminal between motor and PCBA.
3. Replace the Motor.

Replace the Gear Case

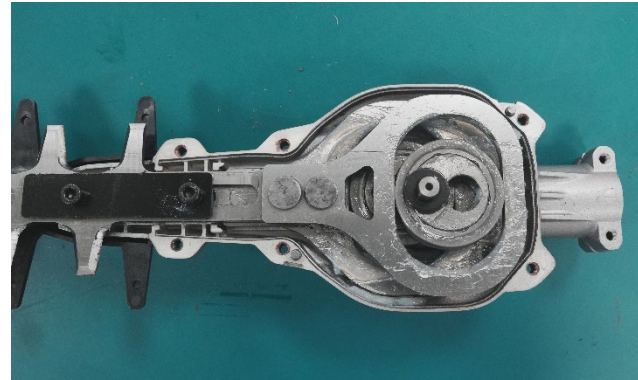
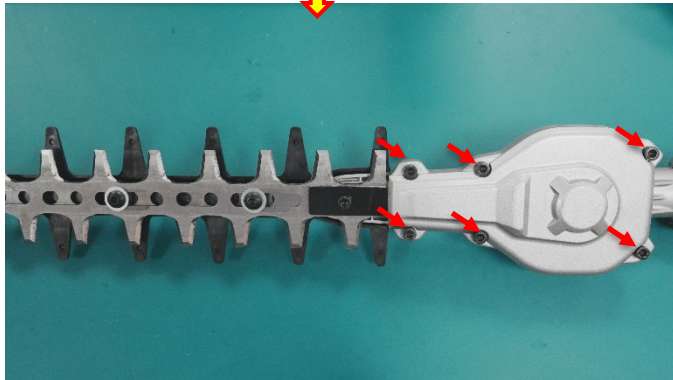


Gear case assembly

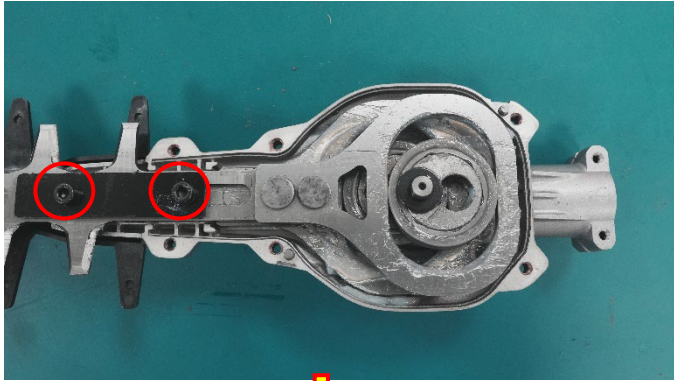
Replace the Gear Case



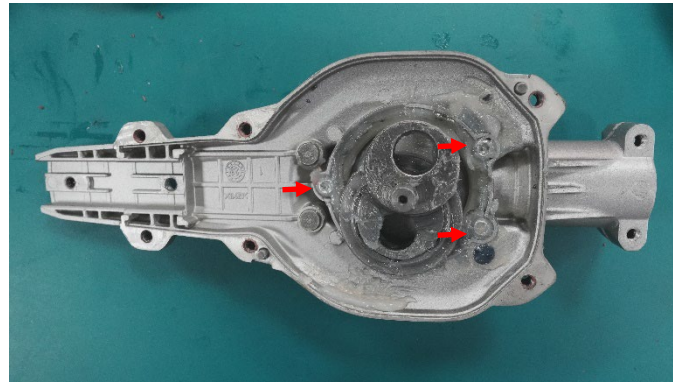
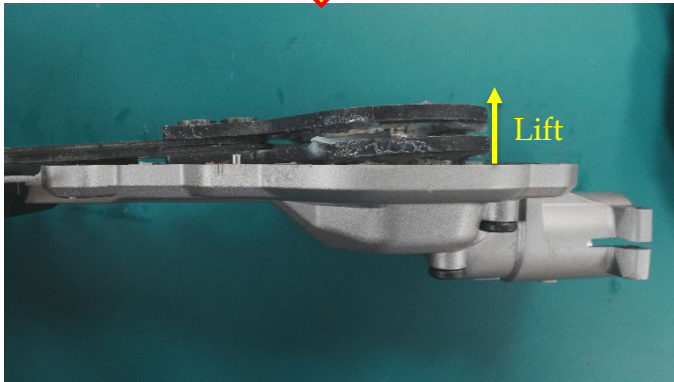
1. Loosen the screws marked in photo. Separate the gear case and blade set from the shaft.
2. Loosen the screws on the bottom of the gear case. Then take out the bottom case of the gear case.



Replace the Gear Case

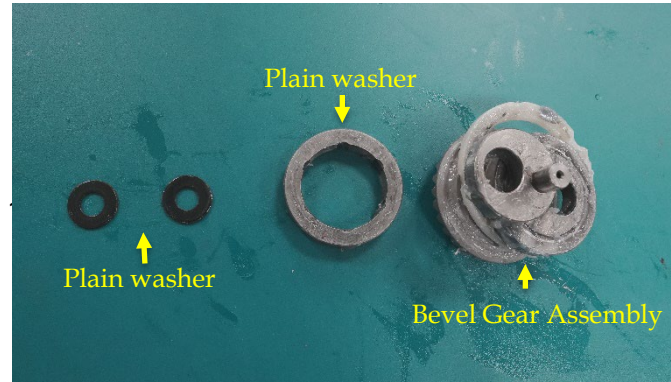
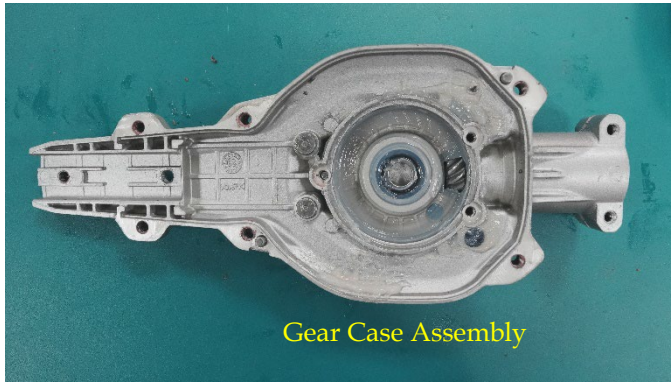


1. Loosen the screws marked in photo. Take out the support plate.
2. Lift the end of the blade and slide the gear case out of the blade set.
3. Loosen the screws to replace the Bevel Gear Assembly

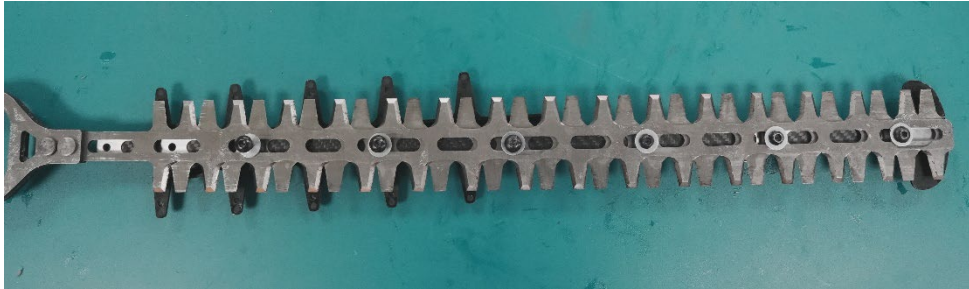


Replace the Gear Case

1. Replace the Gear Case or subcomponent in gear case

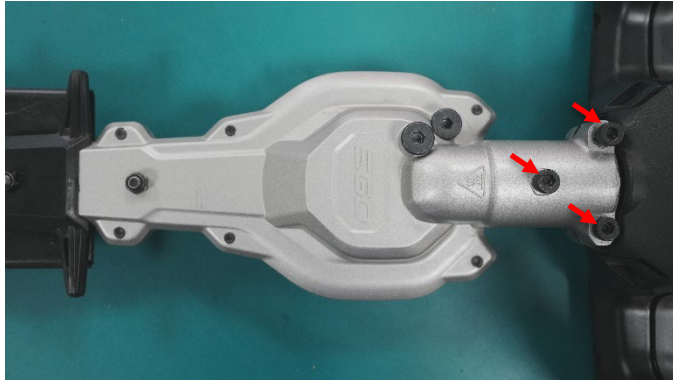


Replace the Blade Assembly

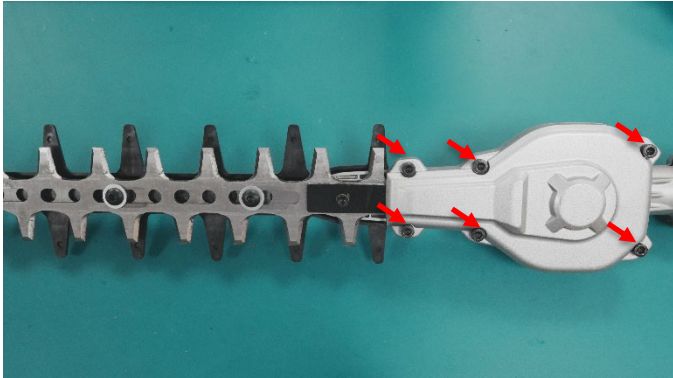


Blade Assembly

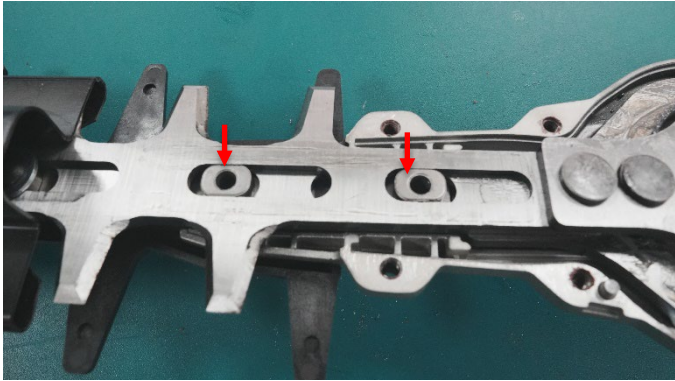
Replace the Blade Assembly



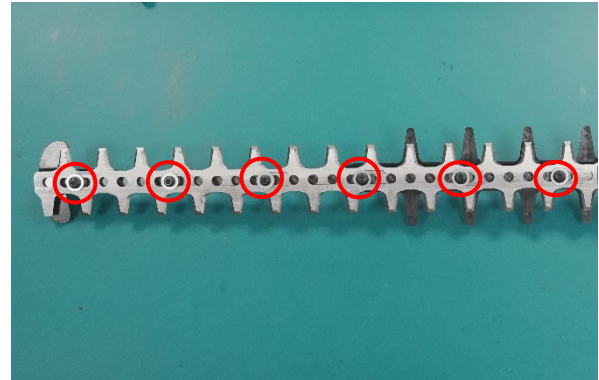
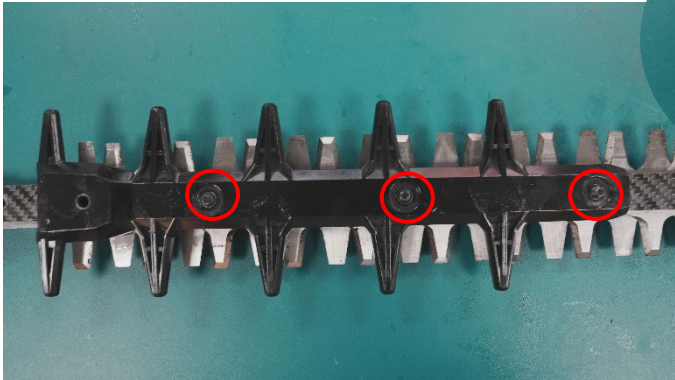
1. Loosen the screws marked in photo. Separate the gear case and blade set from the shaft.
2. Loosen the screws on the bottom of the gear case. Then take out the bottom case of the gear case.
3. Loosen the screws according to the method shown in Figure 4 to remove the support plate and gear case.



Replace the Blade Assembly



1. Please pay attention to the care of the bushing and gasket during disassembly.
2. Loosen screws where fix the protective teeth first
3. Use the socket wrench and hex wrench to loosen the screw on the blade.



Replace the Blade Assembly

1. The disassembled blade assembly.



CHERVON[®]
Better Tools. Better World.

