

REPAIR GUIDELINE

Blower_LB4800E



EGO™
POWER BEYOND BELIEF.™



Version: 1

Issue Date: 2015/03/05

Table of Contents

NO.	Contents	Page
1	Troubleshooting	3
2	Tool list for repair	4
3	Replace the ducted set	5-9
4	Replace the parts in the handle set	10-11

Troubleshooting

Problem	Possible Cause	Fault Position	Test & Solution
Fail to start	PCB is broken	PCB in Handle set	Replace PCB in the handle set.
	Both PCB and motor are broken	PCB in Handle set, Motor in Ducted set	Measure the resistance between any two cables of the three cables in the ducted set by using a multimeter. If the resistance is infinite, replace both the ducted set and the PCB.
Press the boost button/Air Velocity Adjusting Knob when the blower runs, the air velocity and the voice doesn't change.	PCB is broken	PCB in Handle set	Replace PCB in the handle set.
Press the Lock-off Lever separately, then release it, it doesn't return to the original position.	The Lock-off Lever deforms	Lock-off Lever in Handle set	Replace the lock-off lever in the handle set.
The air velocity and the volumn are decreased compared with normal use.	The fan in the duct is over-worn	Fan in Ducted set	Open the housing and the fan baffle, check the fan. If the fan is over-worn, replace the ducted set.

Tool List For Repair

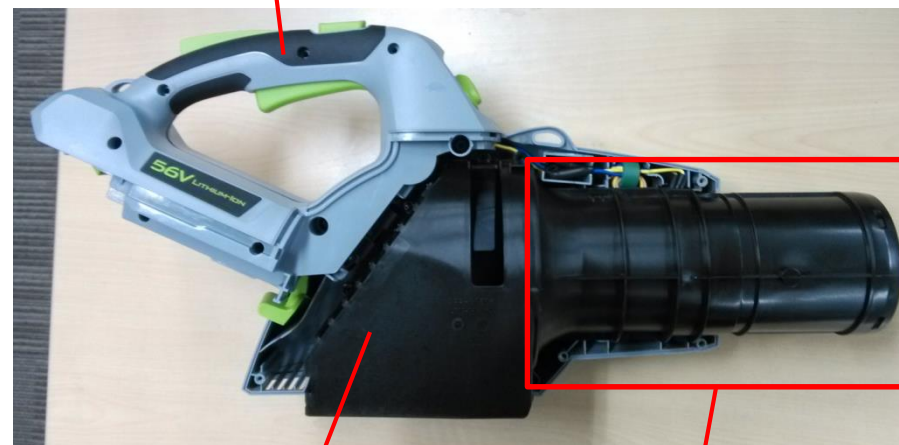
NO.	Tool List	SPEC	Remark
1	Magnetic bits		
3	Heat gun		
4	Heat -shrinkable sleeves		
5	Scissors		To remove the shrinkable sleeve

Replace the Ducted Set

1. Loosen and remove the six screws in the right housing cover and open the housing.



Right Housing Cover



Handle Set

Right Fan Baffle

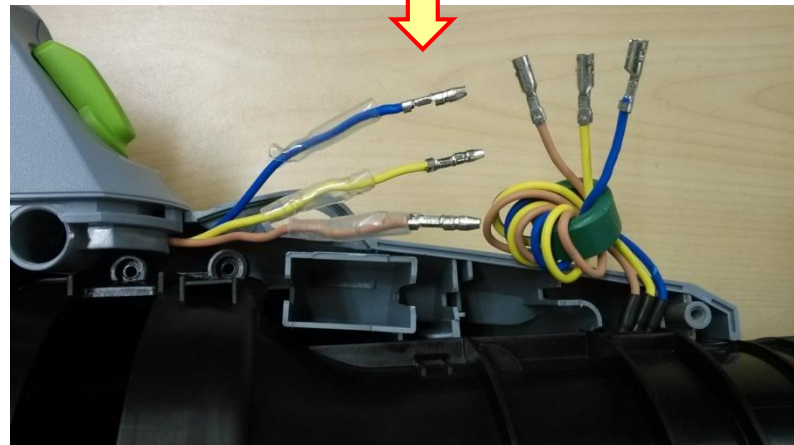
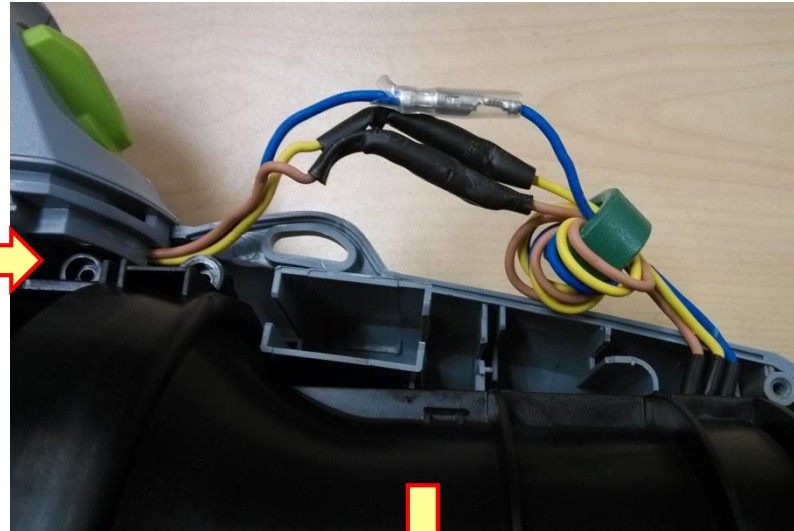
Ducted Set

Description	Part Number
Tapping Screw	5610032000
Left Housing	3127185000
Right Housing	3127184000

Description	Part Number
Ducted Set	2823629000
Left Fan Baffle	3127205000
Right Fan Baffle	3127204000

Replace the Ducted Set

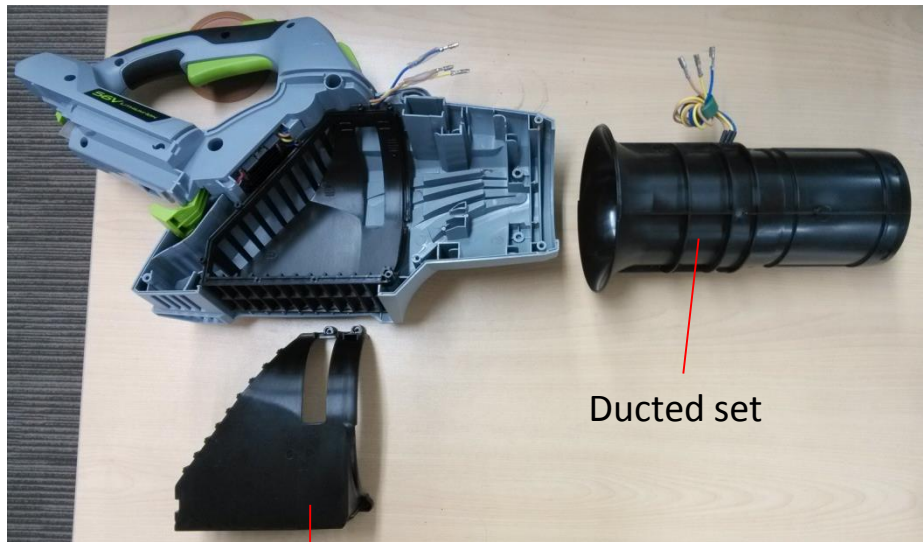
2. Take out the internal wires and connectors from the grooves of housing.
3. Remove the heat-shrinkable sleeve from the connectors with a scissor.
4. Move the transparent sleeve aside and pull the connectors to separate.



Replace the Ducted Set

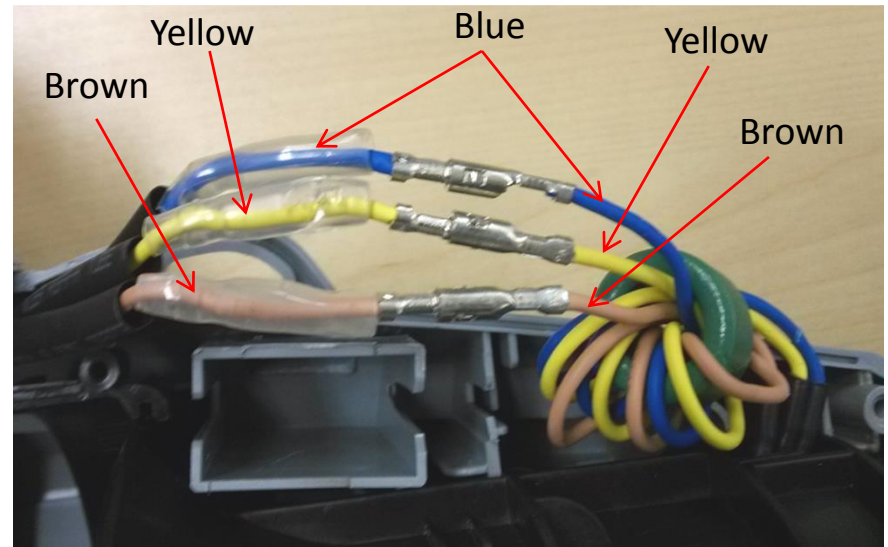
5. Remove the six screws in the right fan baffle, then take the right fan baffle off.
6. Take out the ducted set. Replace with a new ducted set if it is damaged.
7. The left and right fan baffle can be replaced if they are broken or worn.
8. Place a new heat-shrinkable sleeve through the connectors. Plug the connectors and make sure they are fully insert in place.

CORRECT connection: Yellow to Yellow, blue to blue, brown to brown.



Right fan baffle

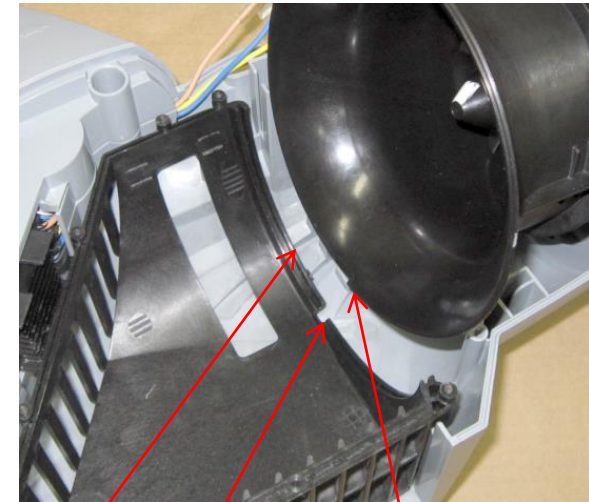
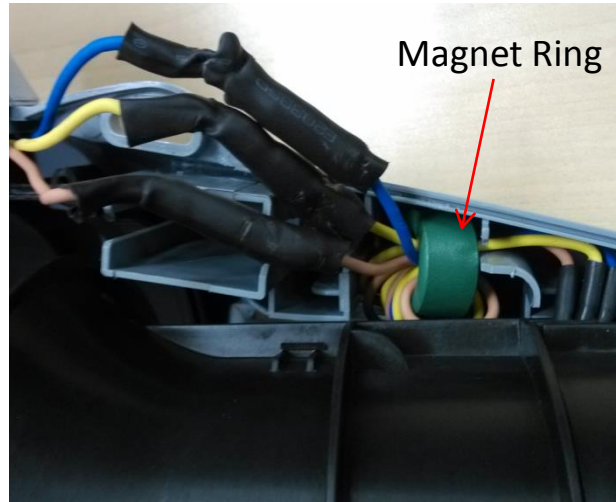
Ducted set



Description	Part Number
Tapping Screw	5610012000

Replace the Ducted Set

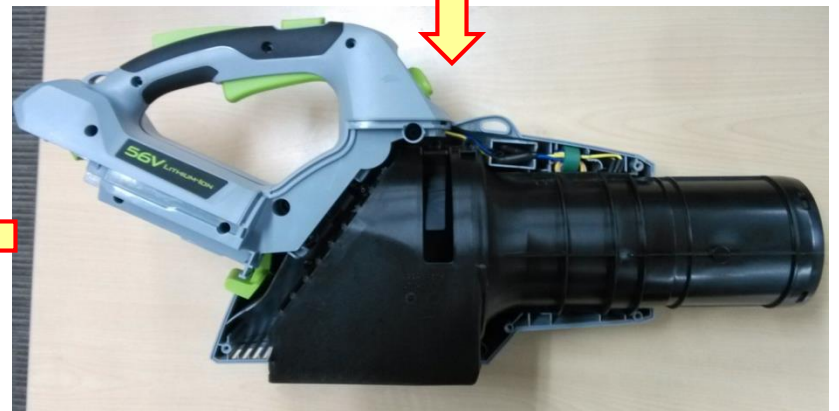
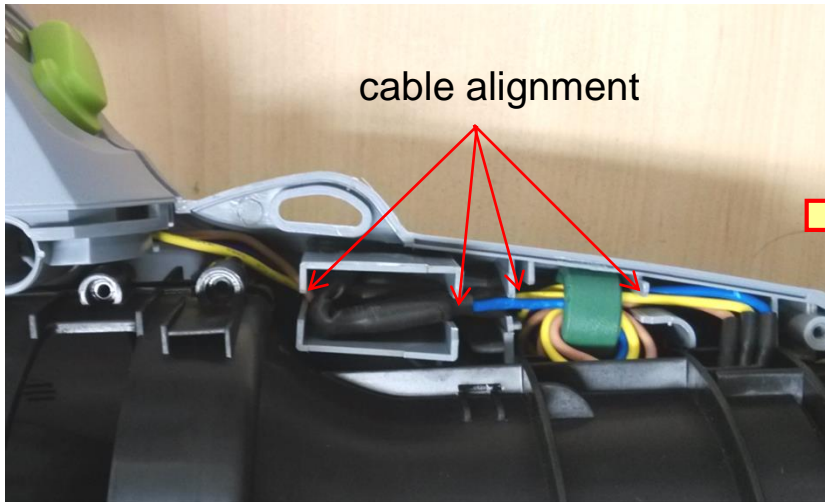
9. Move the transparent sleeve and heat-shrinkable sleeves to cover the connectors and use a hot air gun to shrink the sleeves.
10. Place the magnet ring into the slot between the new ducted set and the housing, press it firmly under the new ducted set.
11. With the rib on the new ducted set towards the notch in the fan baffle, align the edge of the new ducted set with the groove in the left fan baffle and insert the ducted set until it fully sits against the fan baffle.



Groove Notch in the fan baffle Rib

Replace the Ducted Set

12. Align the cables in the grooves.
13. Mount the right fan baffle onto the ducted set and lock it with six screws.
14. Close the right housing and lock it with six screws.



Replace the parts in the handle set

1. Following the instructions in “**Replace the ducted set**” to open the right housing cover.
2. Loose and remove six screws in the right handle housing cover and open the handle housing.
3. Replace the handle housings or any parts in the handle set if they are broken or worn.
(as shown in the next page)
4. Mount the right handle housing cover, fix it with six screws.
5. Follow the instructions in “**Replace the ducted set**” to close the right housing.

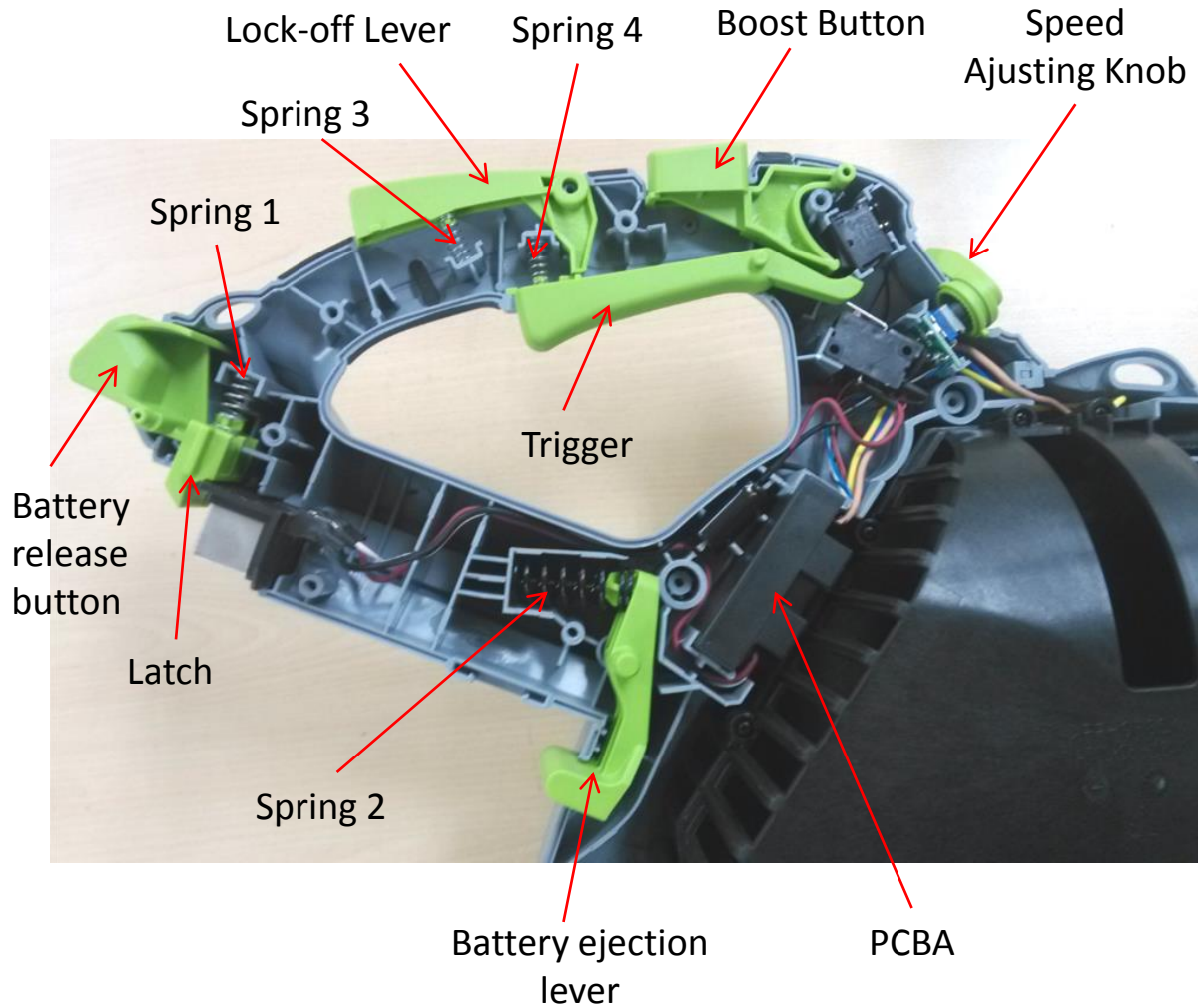
Right Housing Cover



Handle assembly



Replace the parts in the handle set



Description	Part Number
Battery Release Button	3127201000
Latch	3127202000
Battery Ejection Lever	3127206000
Lock-off Lever	3127212000
Trigger	3127211000
Boost Button	3127214000
Speed Adjusting Knob	3127215000
PCBA	2823650000
Spring (1)	3660013000
Spring (2)	3660129000
Spring (3)	3660088000
Spring (4)	3660088000
Left handle housing	3321612000
Right handle housing	3321611000

NOTICE: If replace the PCBA, following the instructions in **“Replace the ducted set”** to disassemble and assemble the three connectors.