

# REPAIR GUIDELINE

## Repair Guideline for Compact Area Light – LT0300E



*Version: A*  
*Issue Date: 2023/10*

# Table of Contents

| NO. | Contents   | Page    |
|-----|--|---------|
| 1   | Tool list  | 3       |
| 2   | Troubleshooting                                  | 4       |
| 3   | Troubleshooting-Based on Error Code from EGO APP | 5       |
| 4   | How to replace the LED Electric Assembly         | 6 ~ 30  |
| 5   | How to replace the Main Electric Assembly        | 31 ~ 38 |

# Tool List For Repair

| NO. | Tool List           | Spec     |
|-----|---------------------|----------|
| 1   | Torx screwdriver    | T15, T20 |
| 2   | Philips screwdriver | PH2      |
| 3   | Slender screwdriver |          |
| 4   | Sealing Glue        |          |

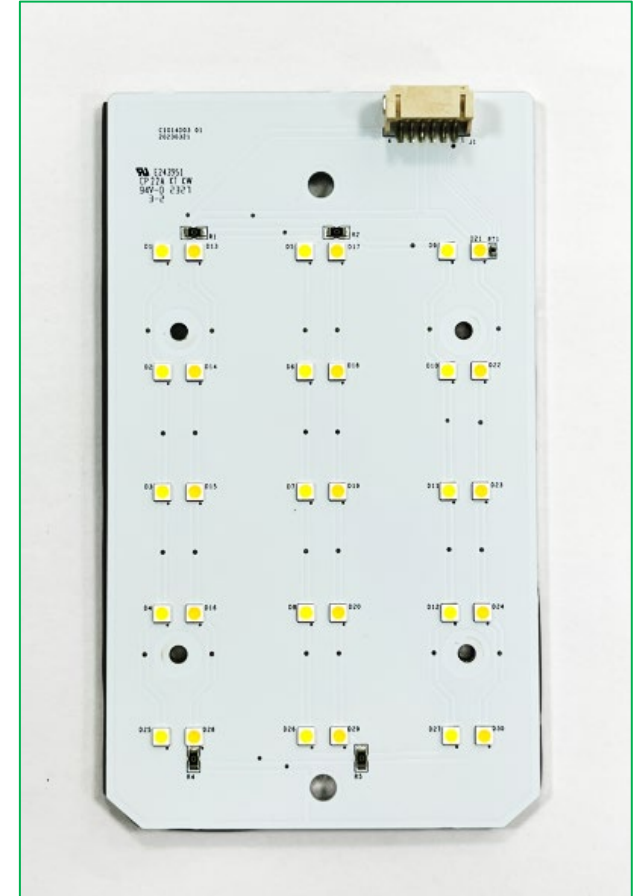
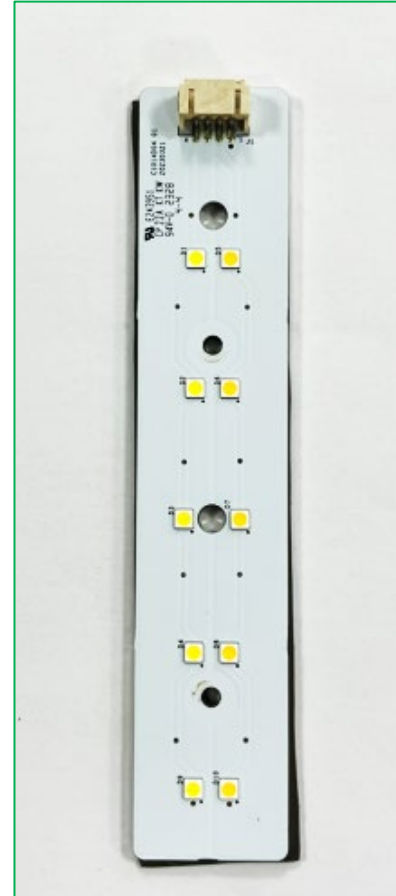
# Troubleshooting

| Problem   | Possible Cause                             | Solution   |
|---|--|--|
| Won't turn on                                       | Main electric assembly could be defective. | <ul style="list-style-type: none"> <li>a. Check if the wiring harness connections are loose.</li> <li>b. If step above doesn't help, replace with a new main electric assembly.</li> <li>c. If step above doesn't help, replace with a new switch assembly.</li> </ul> |
| Light adjustments all failed.                       |  |  |
| USE port doesn't work.                              |  |  |
| Can't connect to the EGO APP.                       |  |  |
| Some light adjustments fail or intermittently fail. | Switch assembly could be defective.        | <ul style="list-style-type: none"> <li>a. Check if the wiring harness connections are loose.</li> <li>b. If step above doesn't help, replace with a new switch assembly.</li> <li>c. If step above doesn't help, replace with a new main electric assembly.</li> </ul> |
| Specific LED electric assembly is always off.       | LED electric assembly could be defective.  | <p>Replace the specific LED electric assembly with a new one and check if the LED can be turned on.</p> <p>Note: The left LED and right LED are the same parts. So they can interchange and connect with the main electric assembly for function check.</p>            |

# Troubleshooting-Based on Error Code from EGO APP

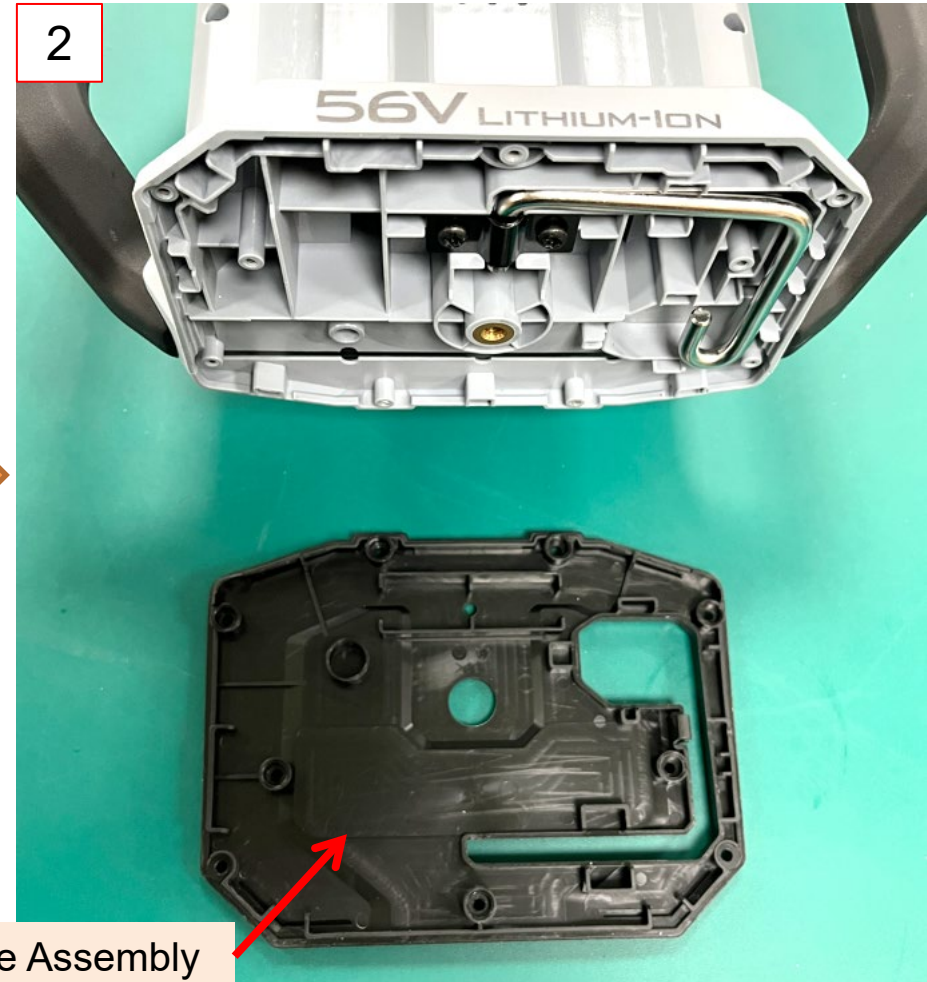
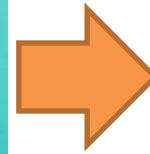
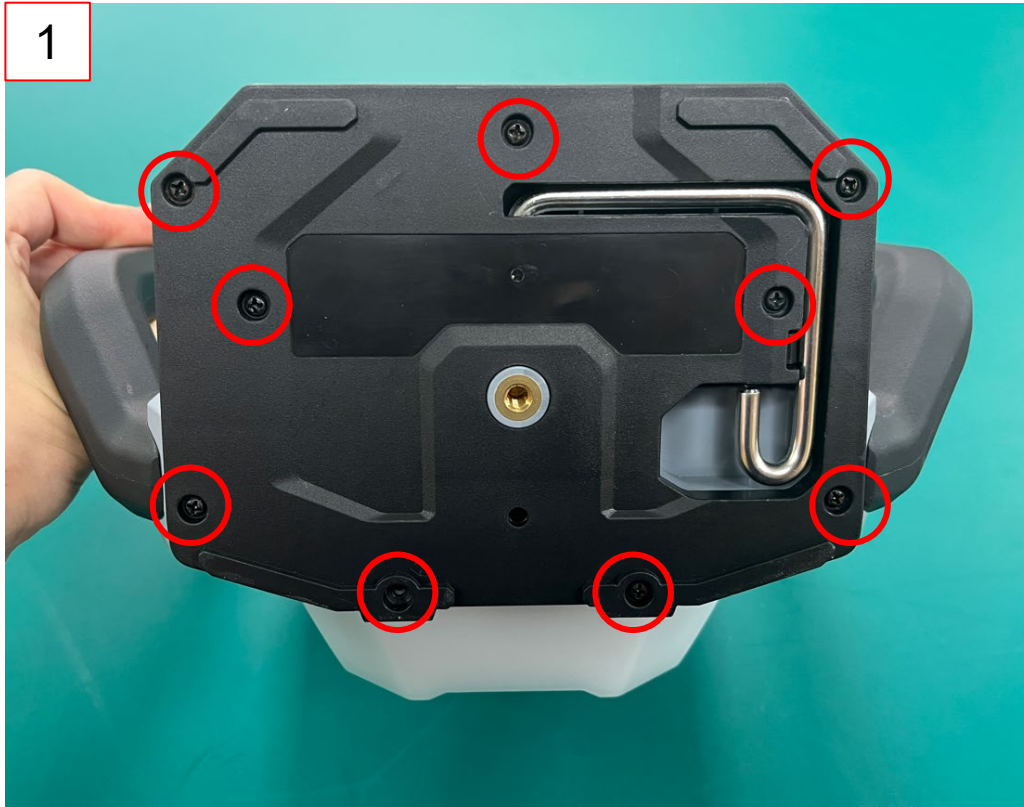
| ERROR CODE | Faulty Name                | Solution   |
|------------|----------------------------|--|
| 01         | <b>Battery overheat</b>    | Please wait for the battery to cool down or change the battery.  |
| 02         | <b>Low battery</b>         | Please charge the battery.   |
| 03         | <b>Communication error</b> | Please replace with a new main electric assembly and test if the light is functional.  |
| 04         | <b>LED board overheat</b>  | Please wait for the <b>LED</b> light to cool down.<br>If it still doesn't work , please replace with a new main electric assembly and test if the light is functional. |
| 05         | <b>USB error</b>           | Please restart the light.<br>If it still doesn't work , please replace the main electric assembly and test if the light is functional.                                 |

## How to replace the LED Electric Assembly



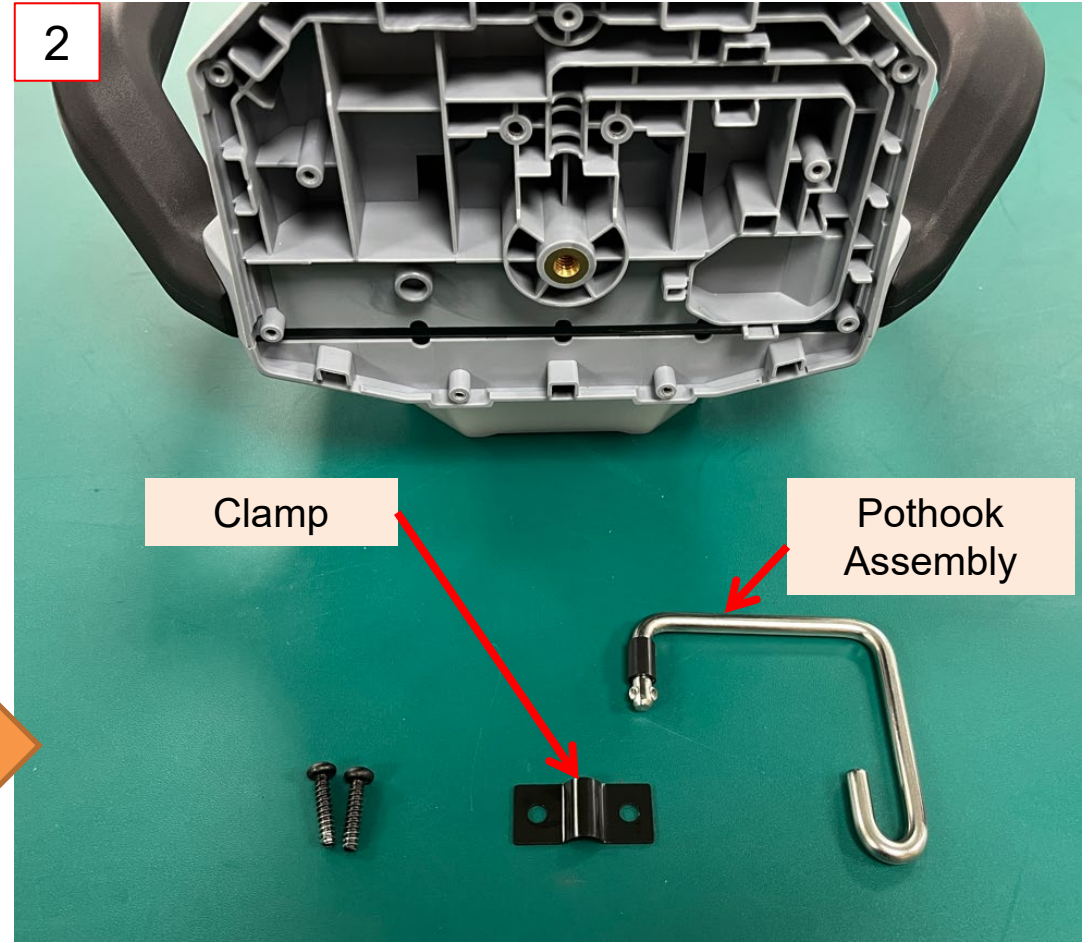
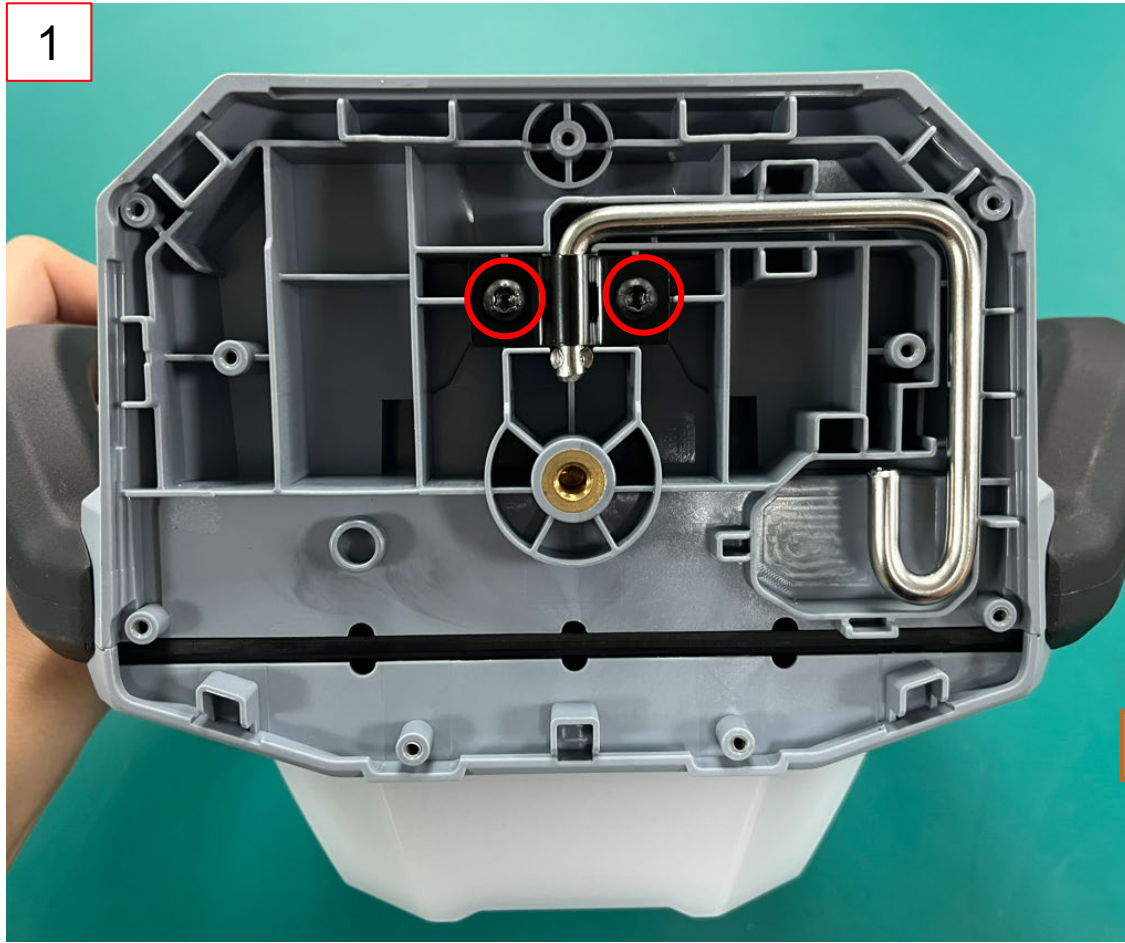
# How to replace the LED Electric Assembly

1. Use a PH2 bit to loosen the 9 screws to remove the base assembly.



# How to replace the LED Electric Assembly

2. Use a Torx T20 bit to loosen the 2 screws to remove the clamp and the pothook assembly. Replace any part as needed.





# How to replace the LED Electric Assembly

3. Use a Torx T15 bit to loosen the 6 screws to remove the front housing.



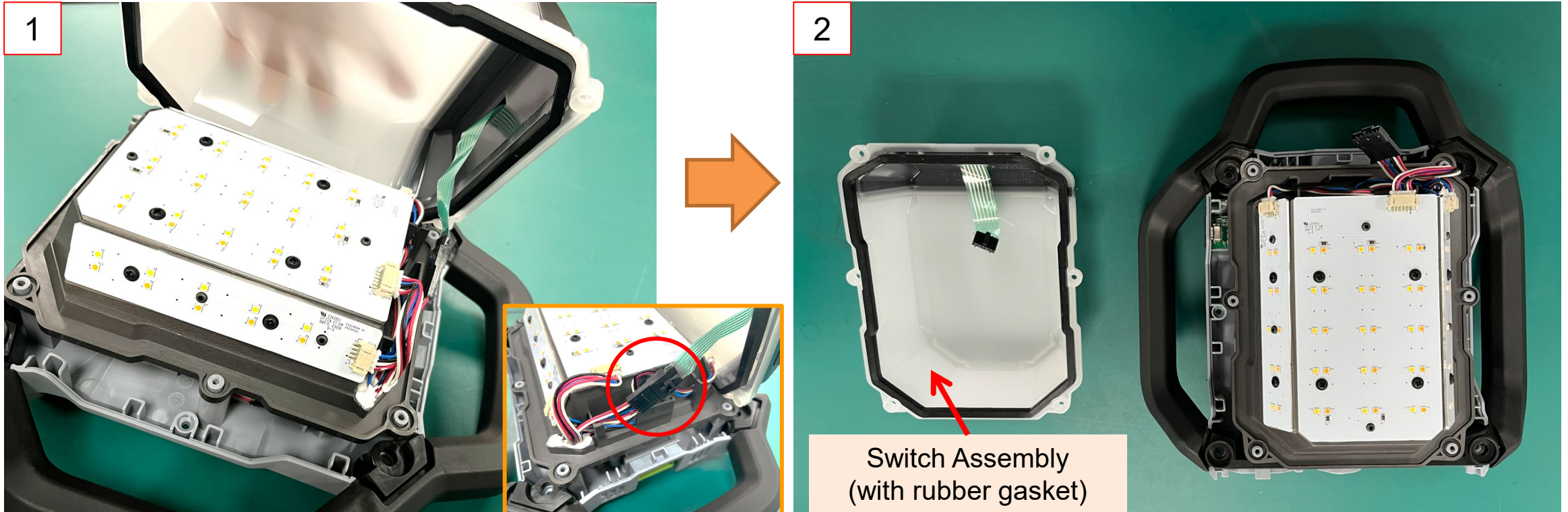
# How to replace the LED Electric Assembly

4. Use a Torx T15 bit to loosen the 6 screws to separate the switch assembly from the light.



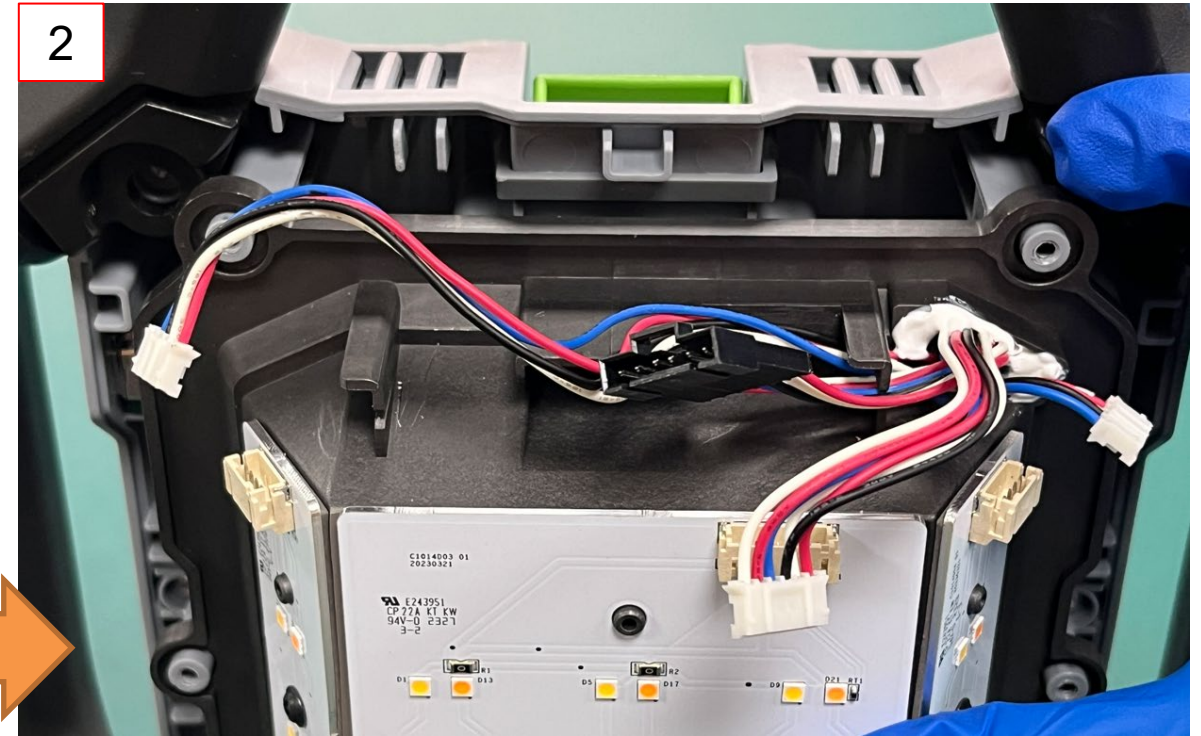
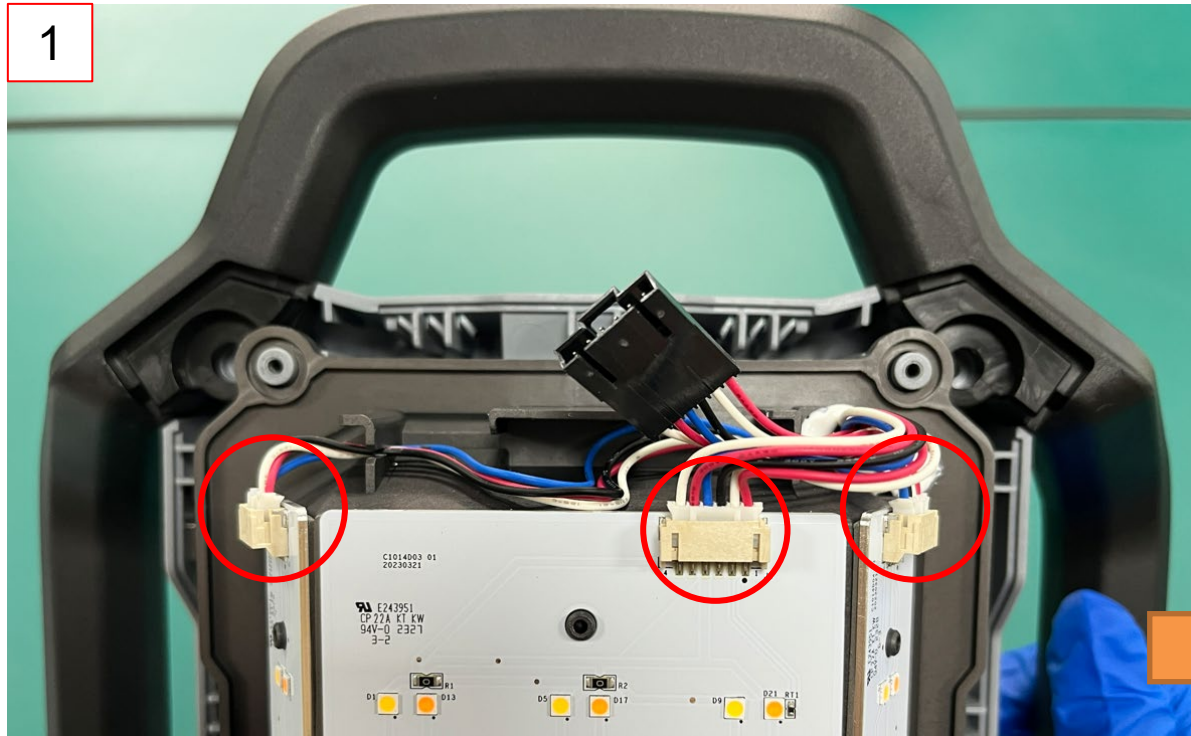
# How to replace the LED Electric Assembly

5. Be careful to partially lift the switch assembly from the light, and disconnect the film switch connector linking to the main electric assembly.



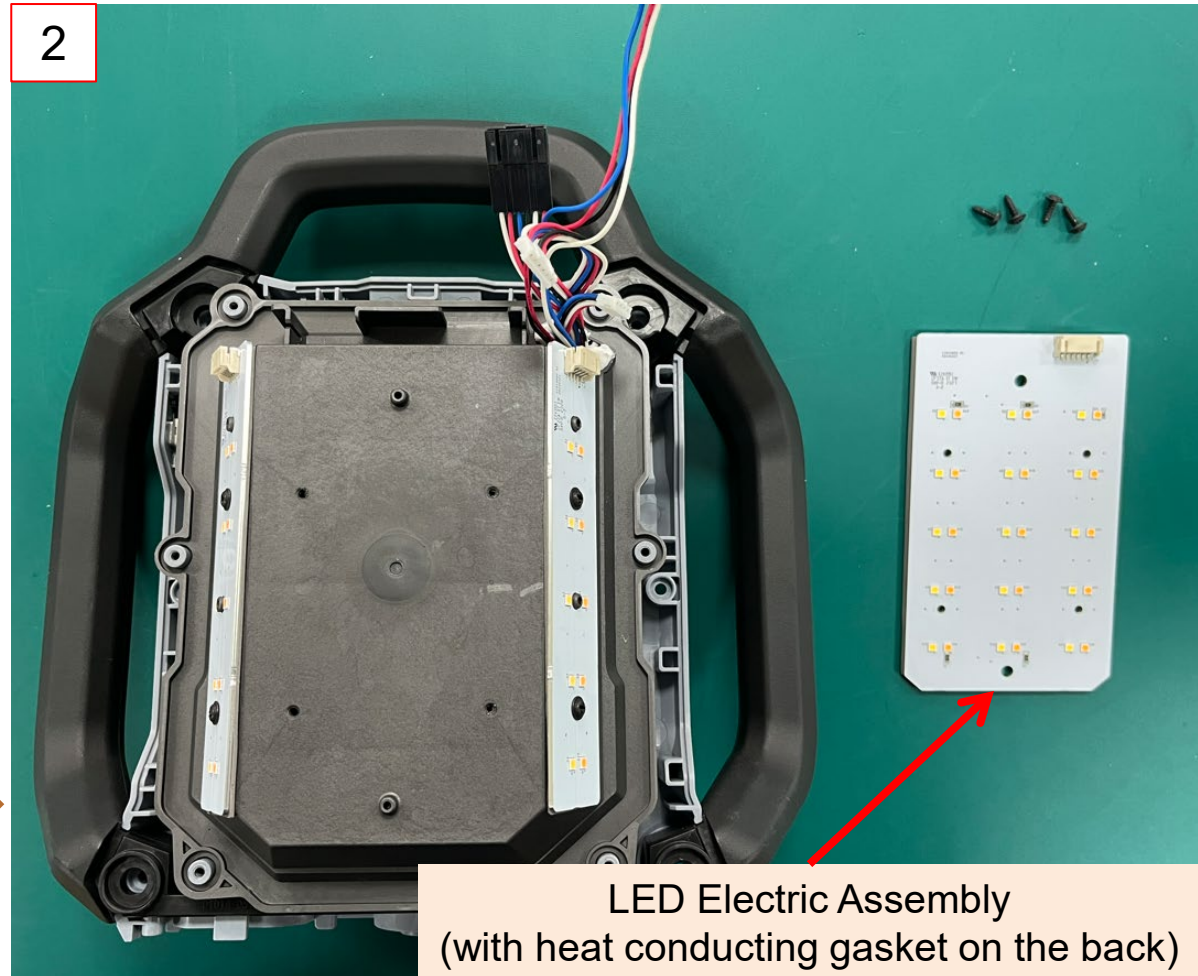
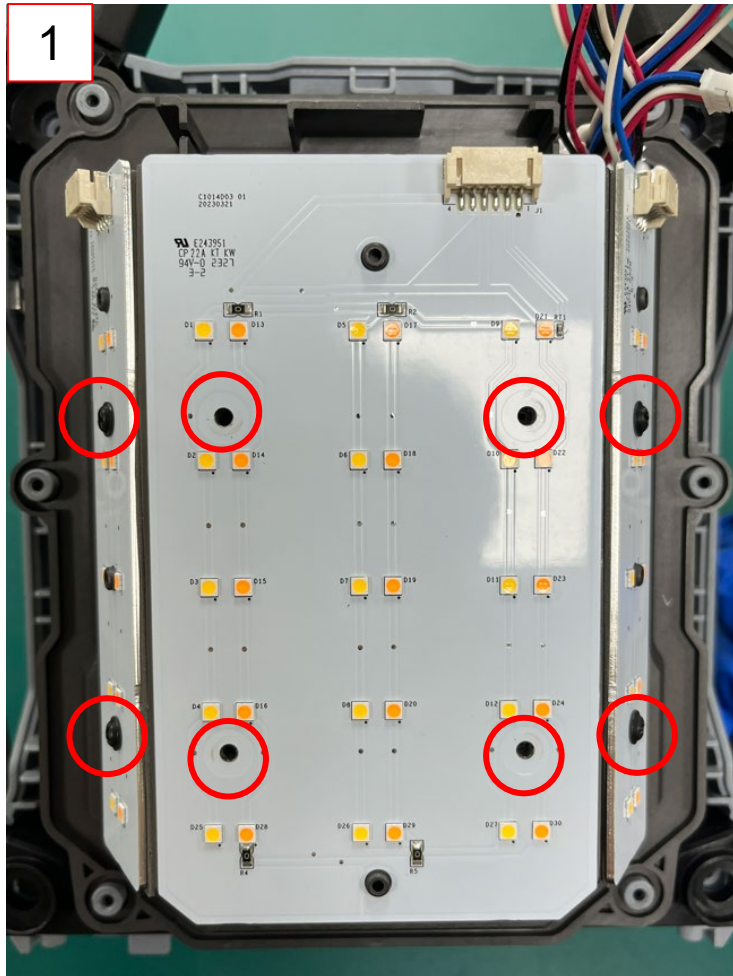
# How to replace the LED Electric Assembly

6. Disconnect the three connectors linking the LED electric assembly to the main electric assembly.



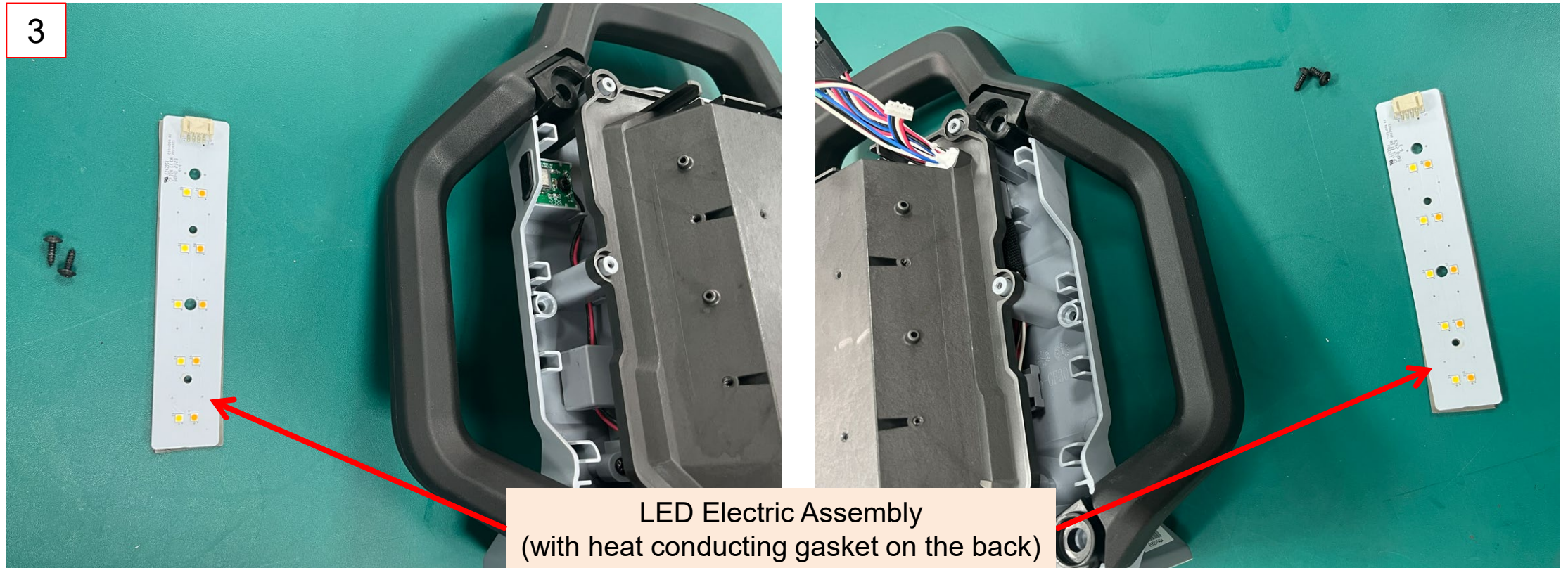
# How to replace the LED Electric Assembly

7. Use a PH2 bit to loosen the 8 screws to remove the LED electric assembly from the middle housing.



# How to replace the LED Electric Assembly

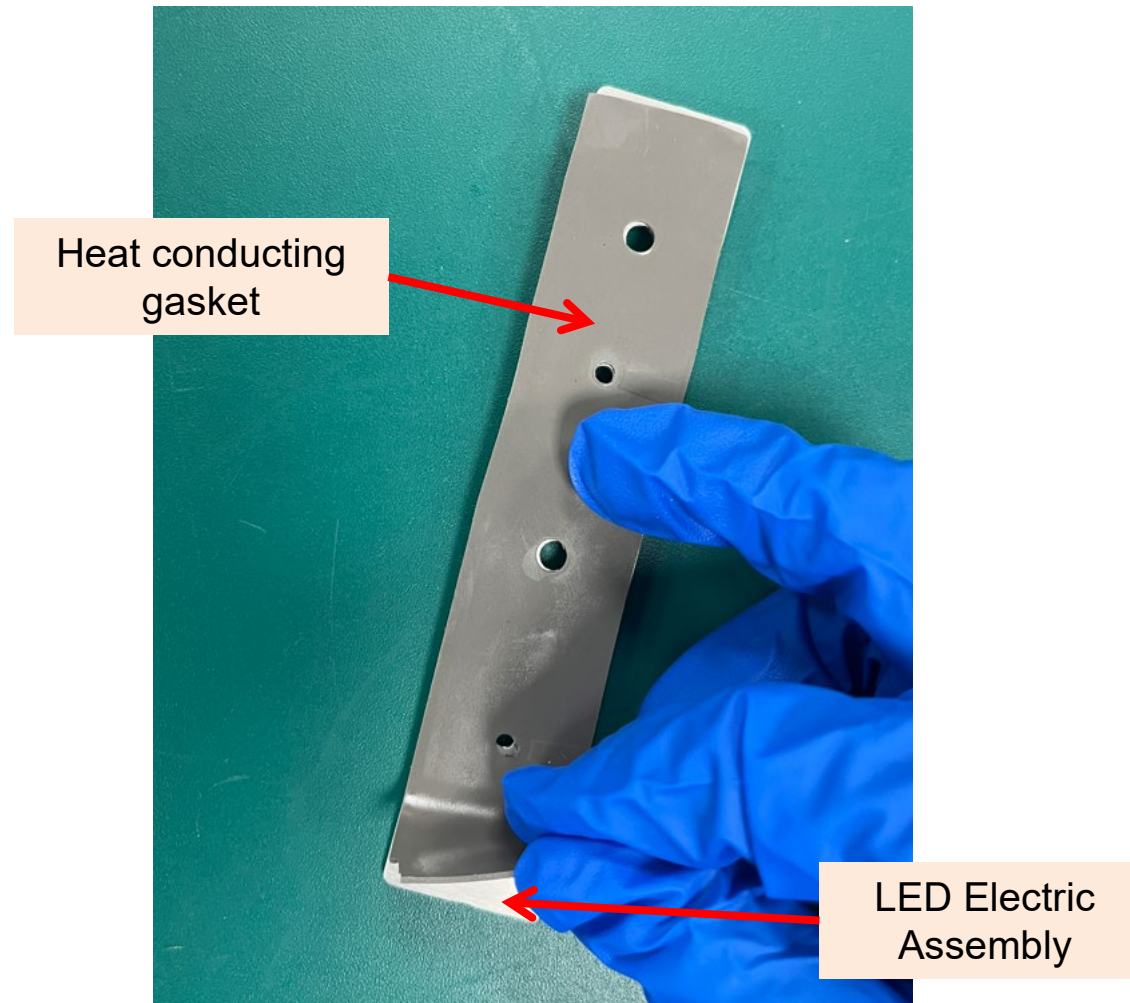
7. Use a PH2 bit to loosen the 6 screws to remove the LED electric assembly from the middle housing.



# How to replace the LED Electric Assembly

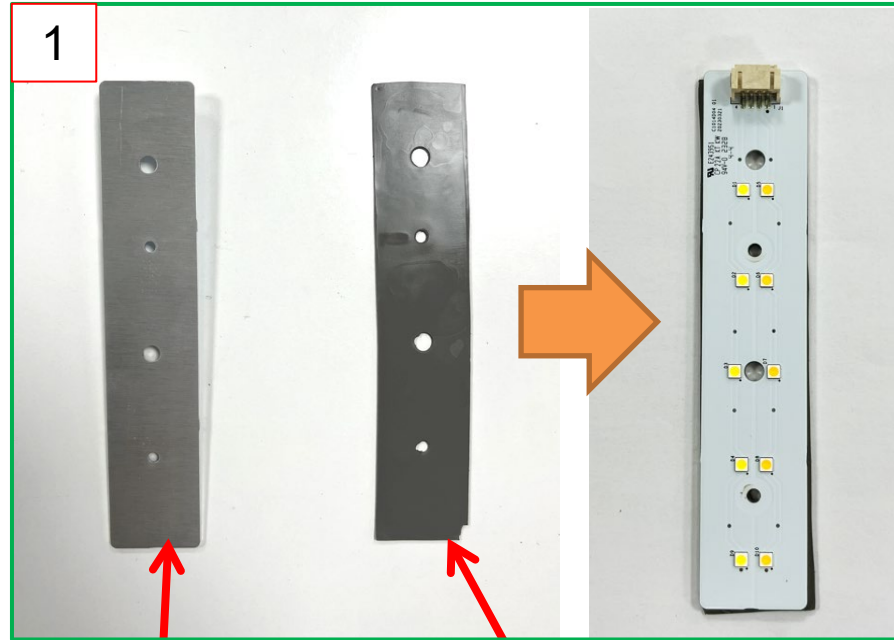
8. The heat conducting gasket can be torn off from the LED electric assembly and replaced with a new one as needed.

Note: We recommend a new heat conducting gasket is replaced together with the LED electric assembly.



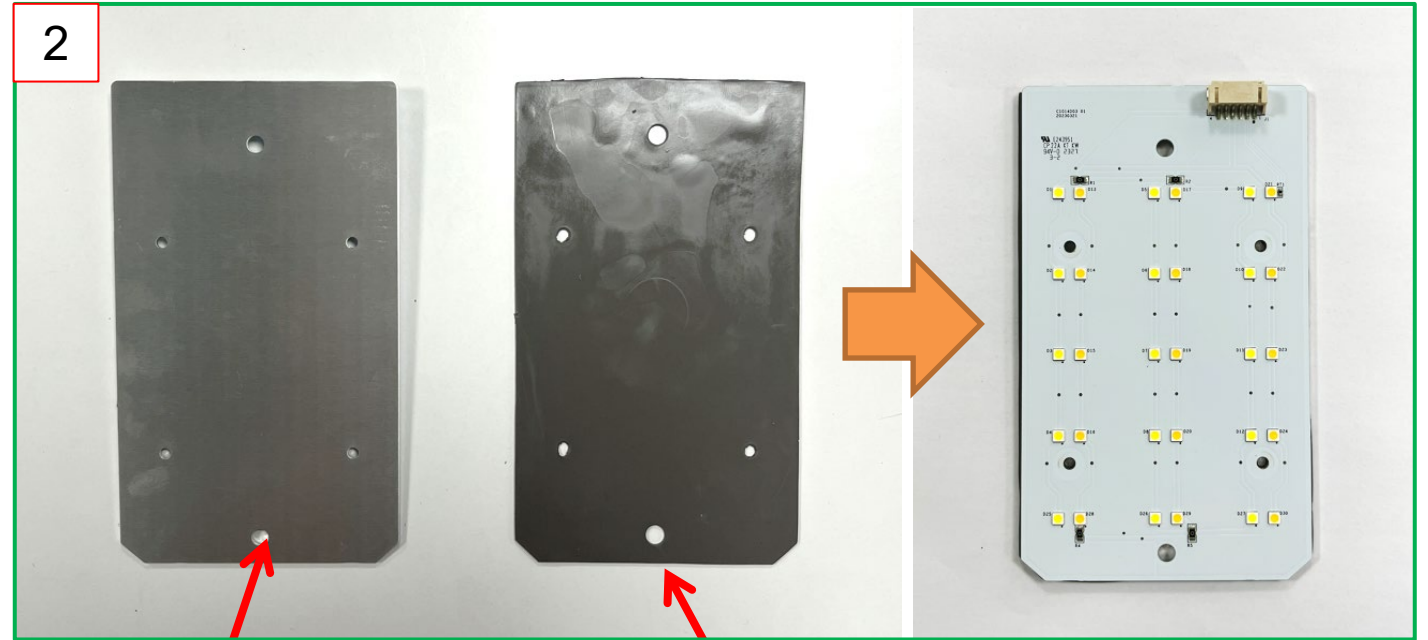
# How to replace the LED Electric Assembly

9. Align and adhere the heat conducting gasket to the new LED electric assembly.



LED Electric Assembly

Heat Conducting Gasket



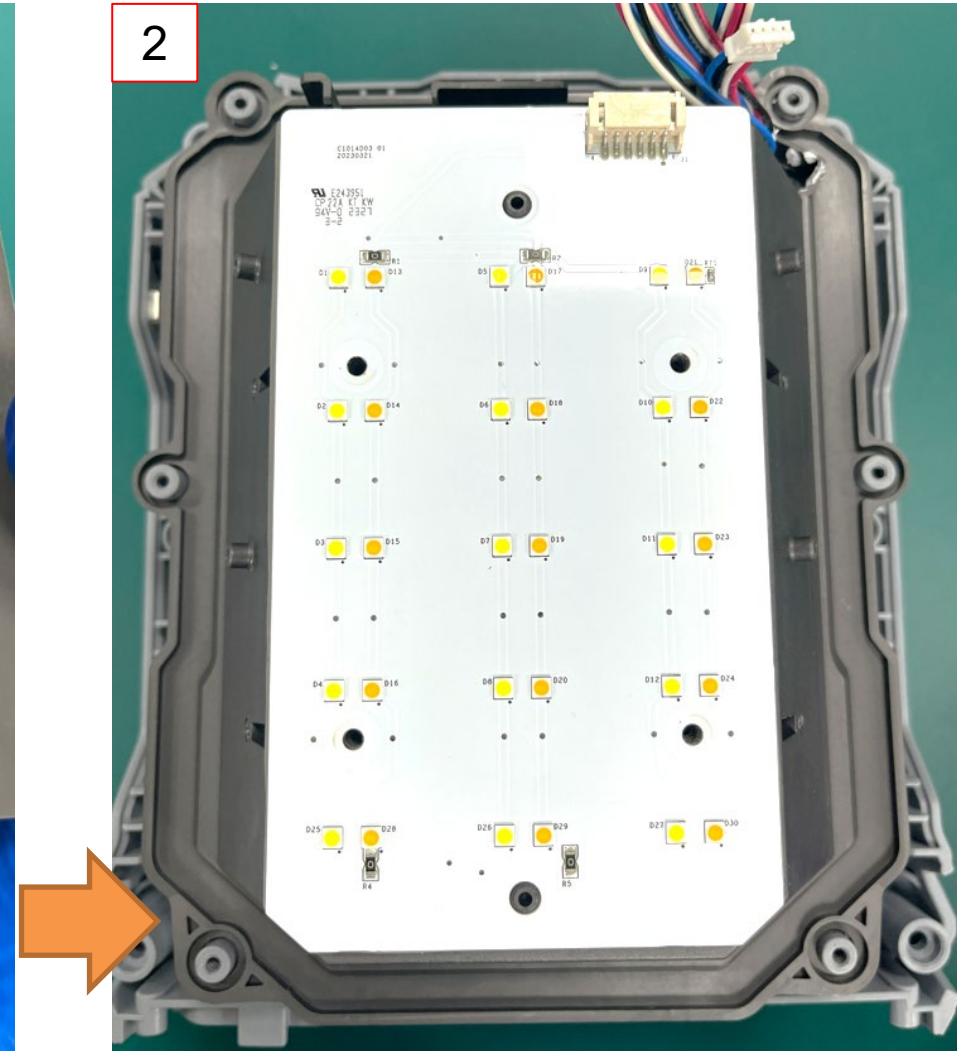
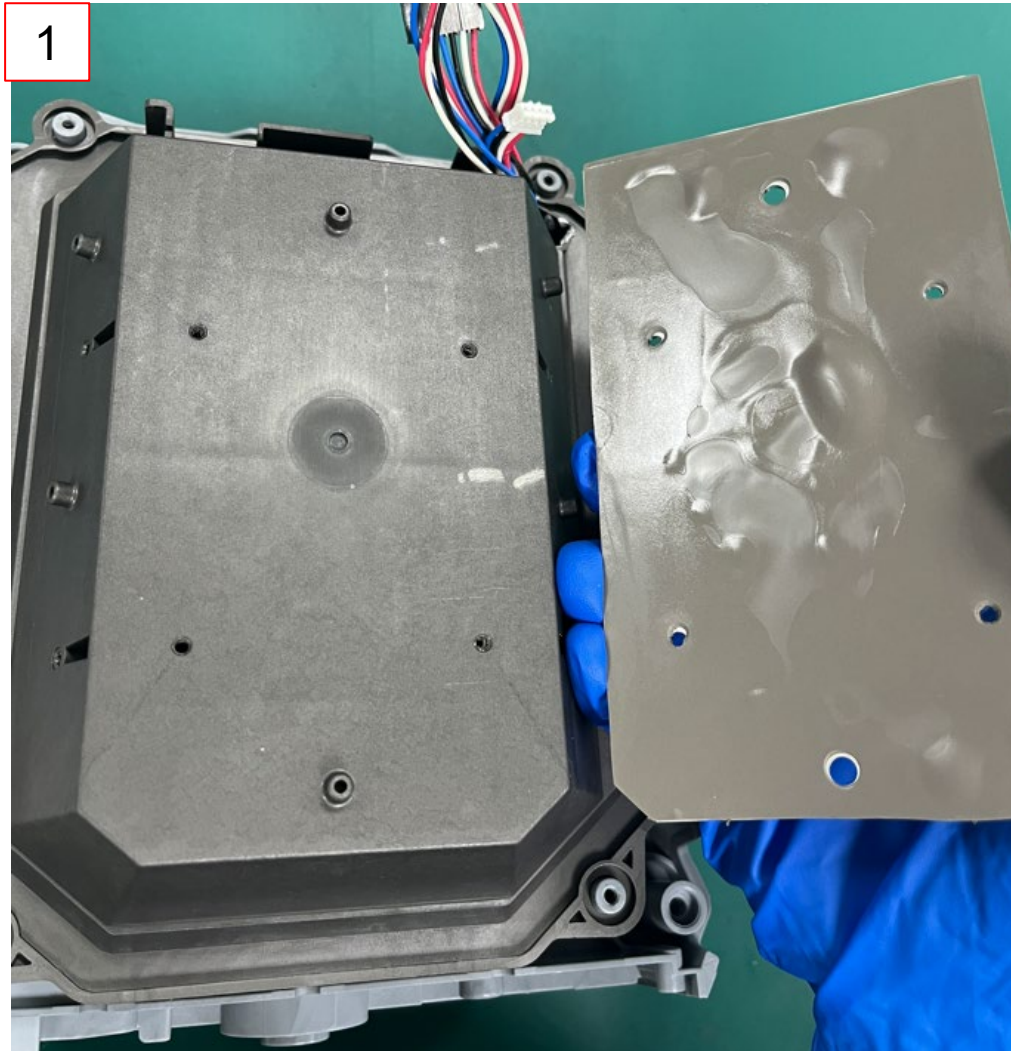
LED Electric Assembly

Heat Conducting Gasket



# How to replace the LED Electric Assembly

10. Align and place the LED electric assembly (with heat conducting gasket on the back) onto the middle housing.



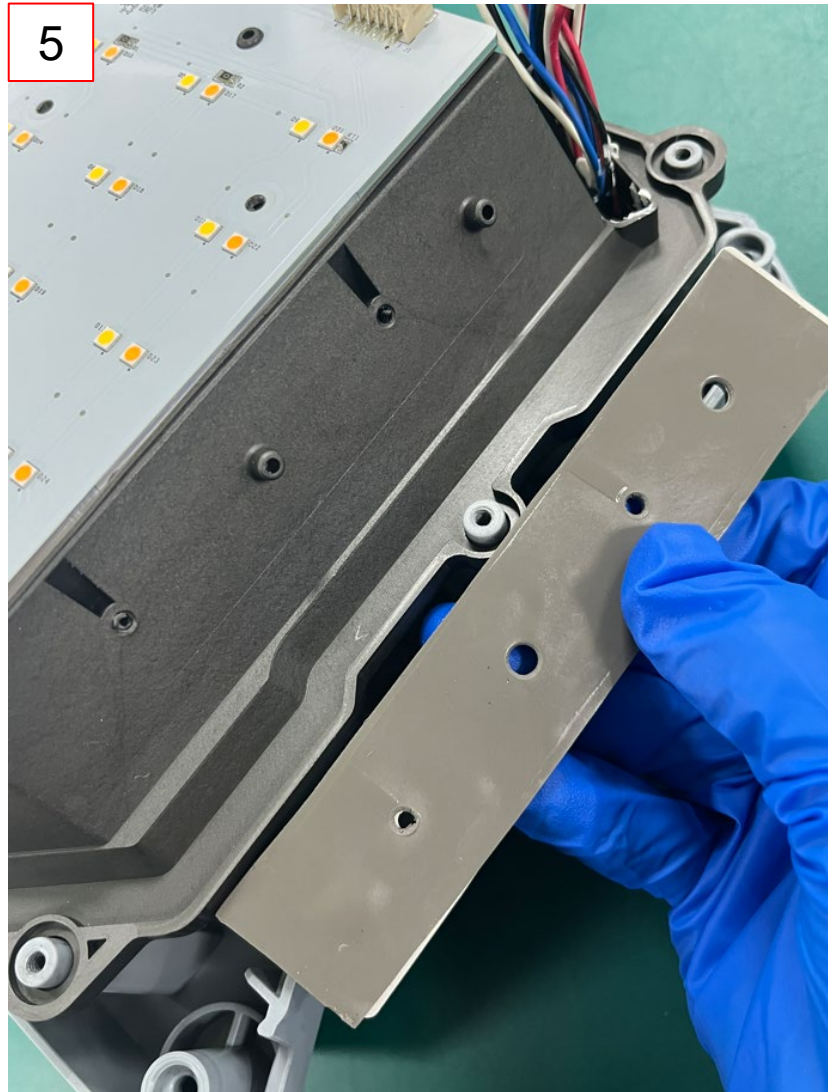
# How to replace the LED Electric Assembly

10. Align and place the LED electric assembly (with heat conducting gasket on the back) onto the middle housing.



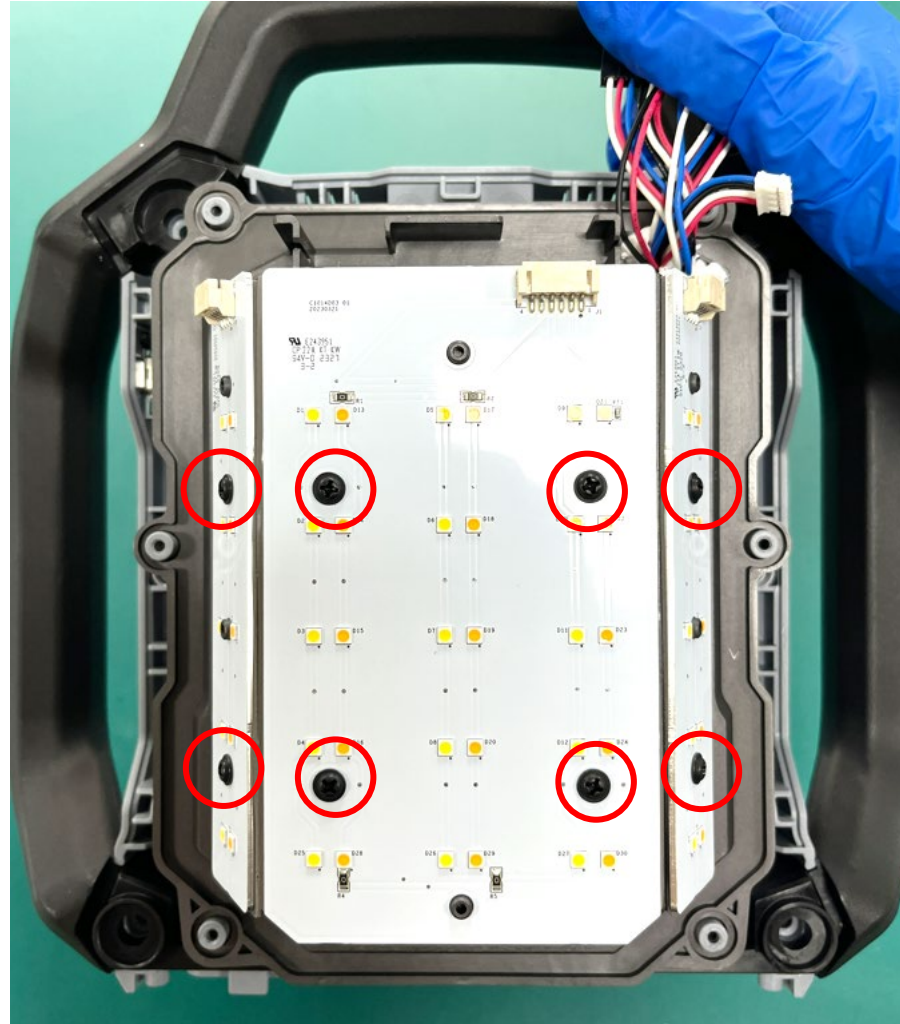
# How to replace the LED Electric Assembly

10. Align and place the LED electric assembly (with heat conducting gasket on the back) onto the middle housing.



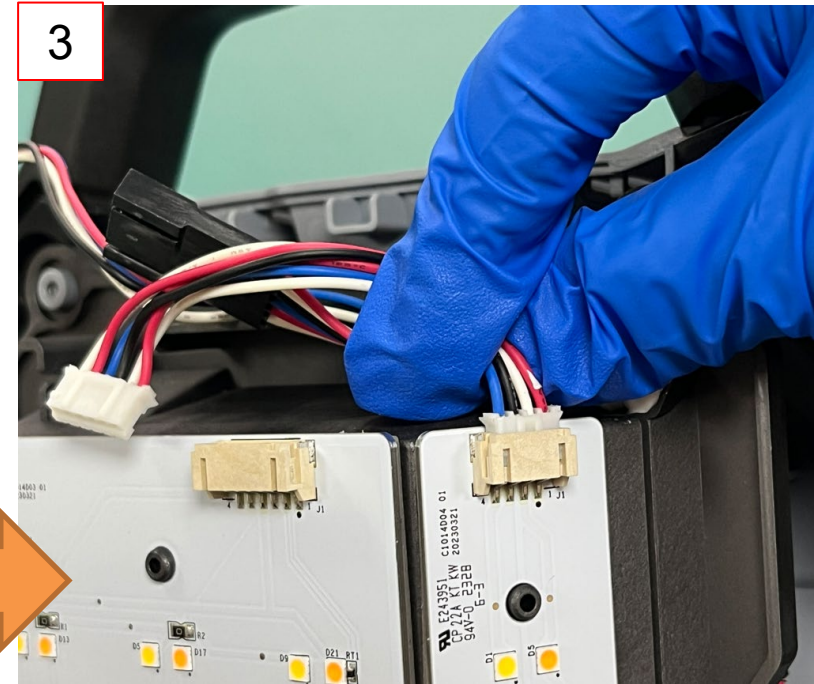
# How to replace the LED Electric Assembly

11. Use a PH2 bit to fasten the 8 screws to secure the LED electric assembly on the middle housing.



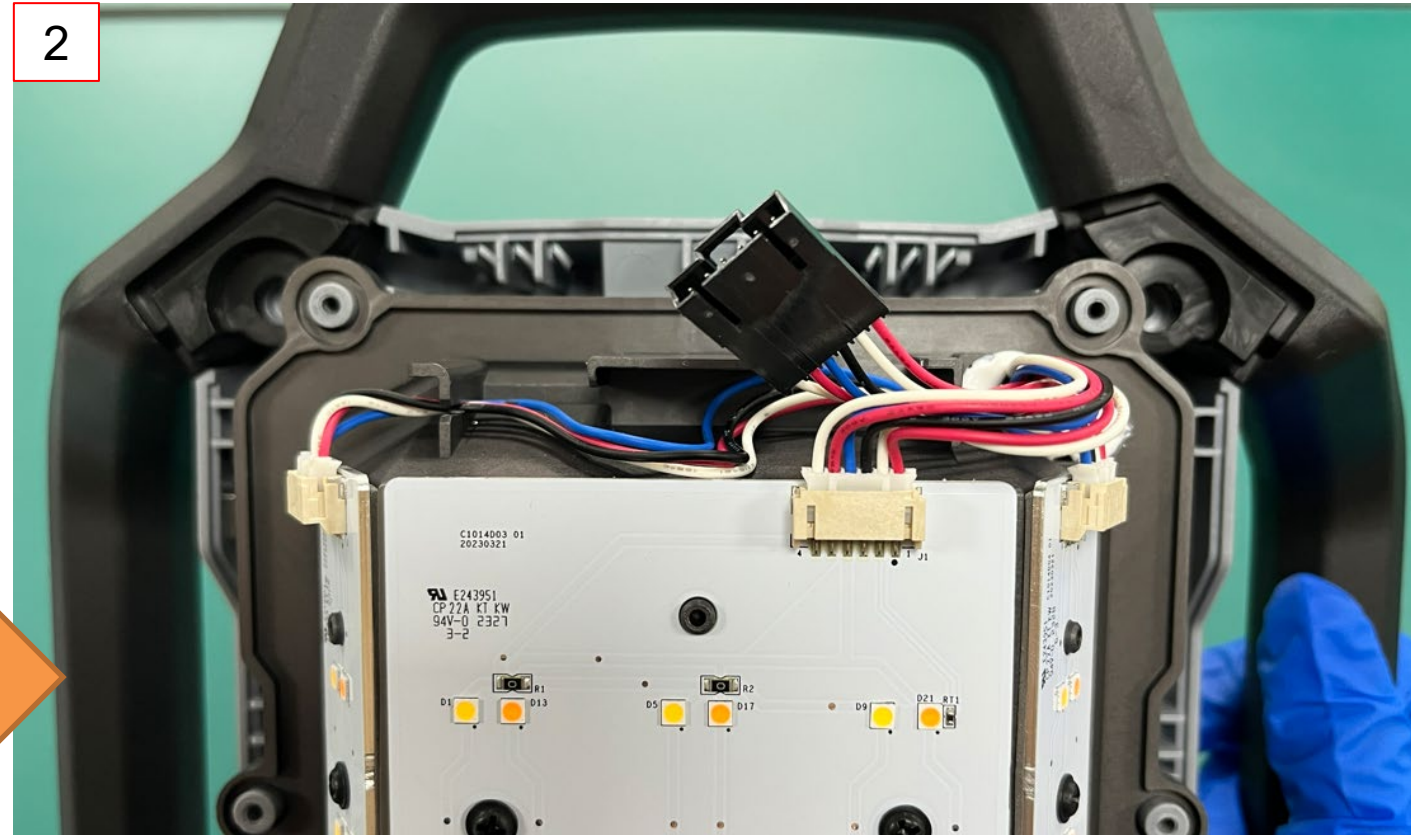
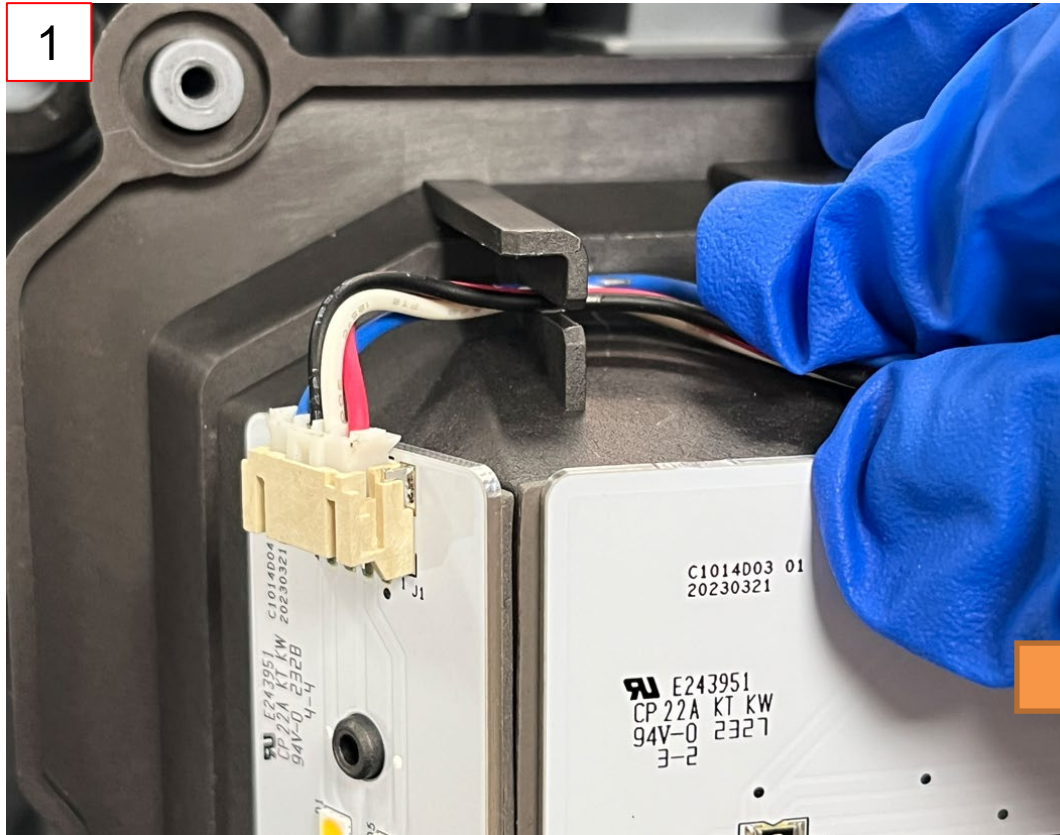
# How to replace the LED Electric Assembly

12. Re-connect the three connectors linking the LED electric assembly to the main electric assembly.



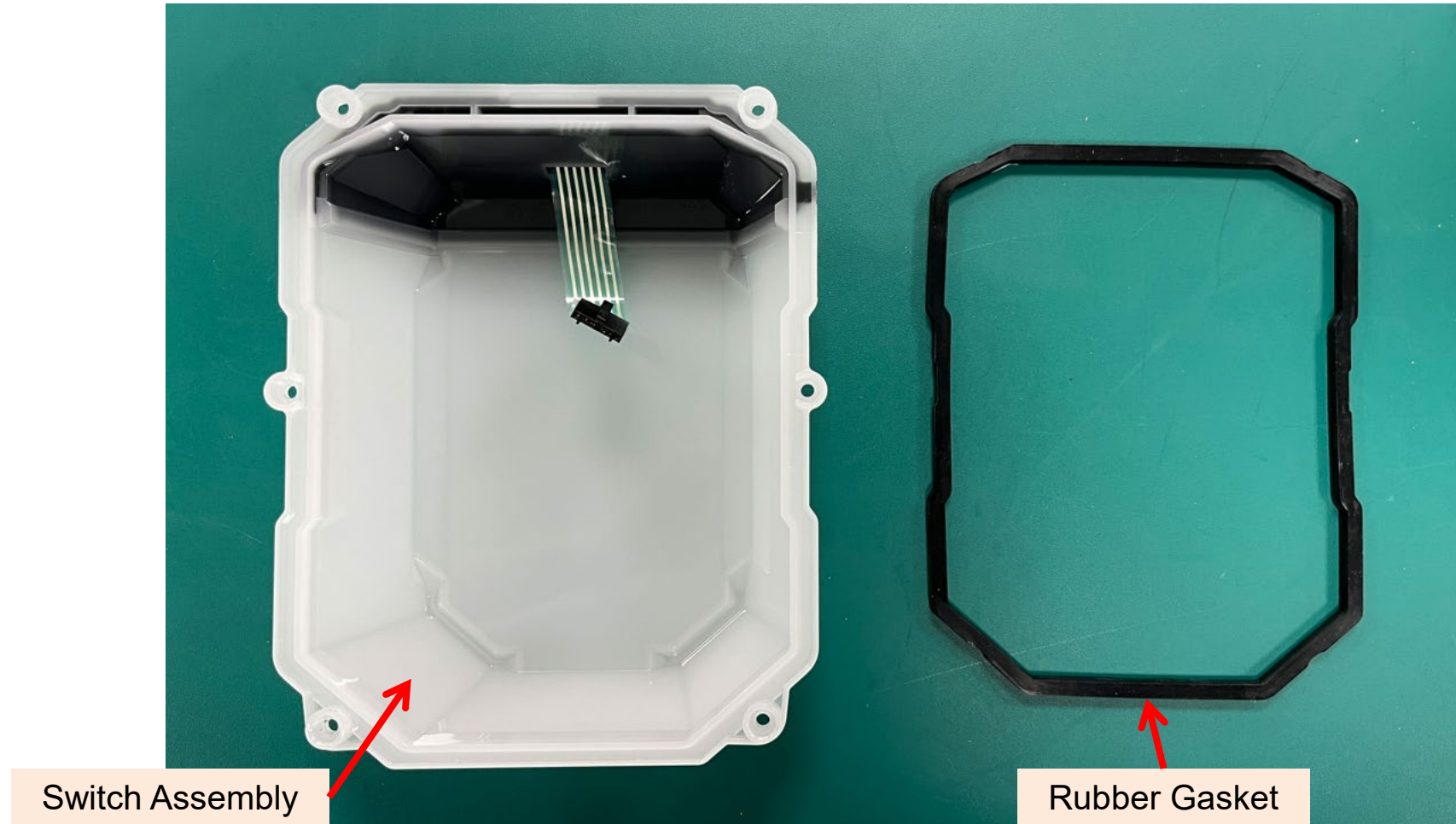
# How to replace the LED Electric Assembly

13. Arrange the wires into the fixing slot as shown below:



# How to replace the LED Electric Assembly

14. Place the rubber gasket back into the switch assembly.



# How to replace the LED Electric Assembly

15. Align the groove of the rubber gasket with the switch assembly housing and mount it back properly.

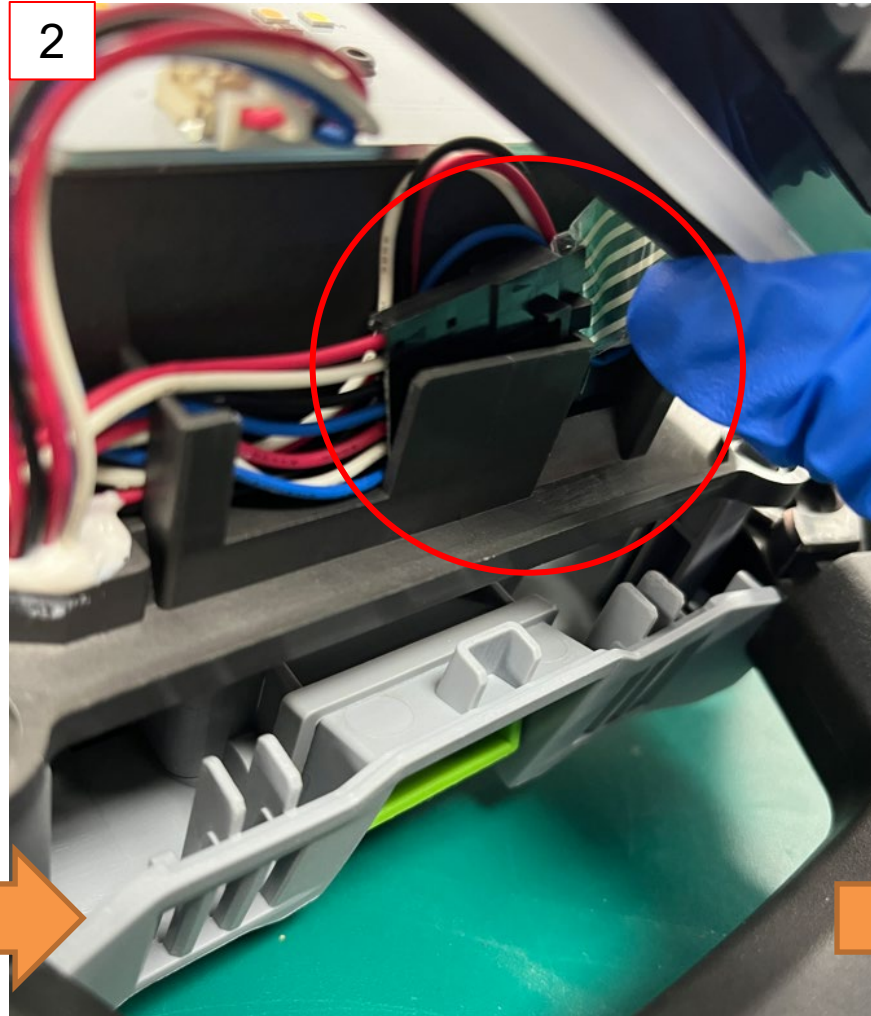
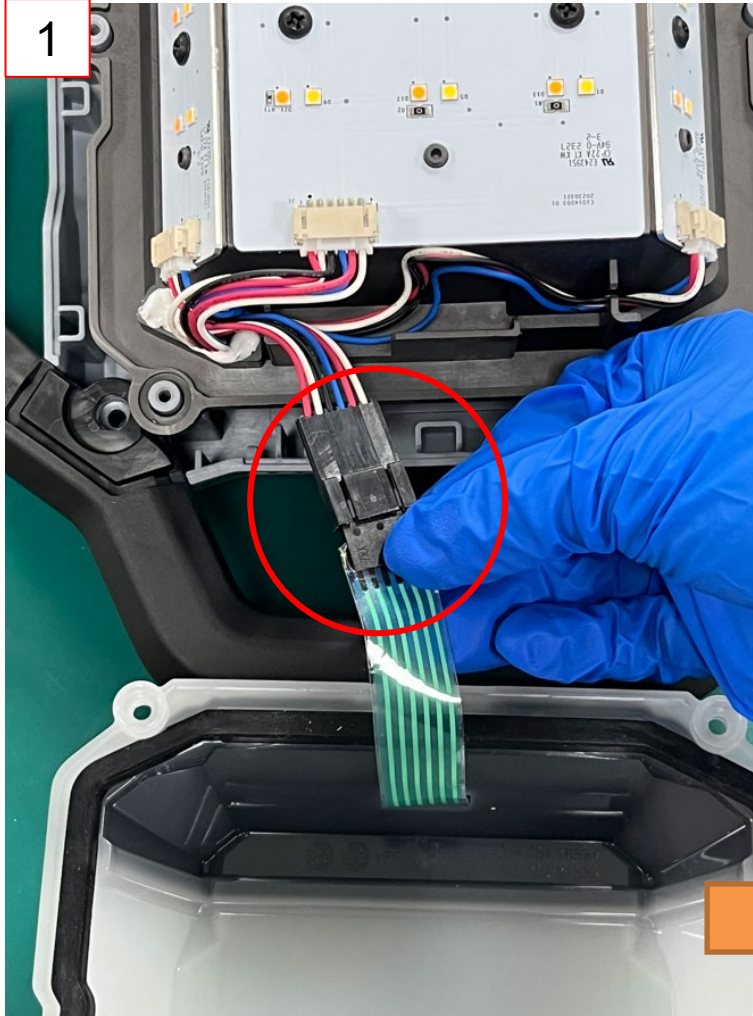




# How to replace the LED Electric Assembly

16. Re-connect the film switch connector linking to the main electric assembly.

17. Place the film switch connector into the slot and carefully close the switch assembly.



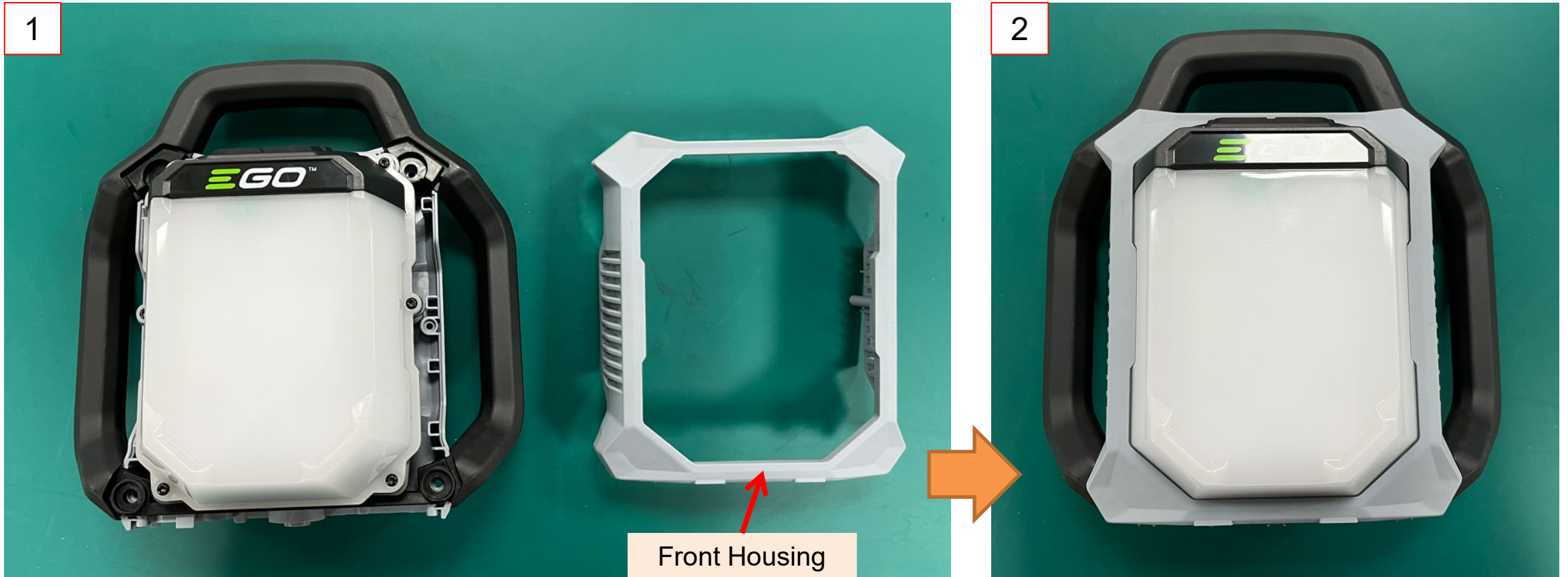
# How to replace the LED Electric Assembly

18. Use a Torx T15 bit to fasten the 6 screws to secure the switch assembly with the light.



# How to replace the LED Electric Assembly

19. Align and place the front housing back onto the light.



# How to replace the LED Electric Assembly

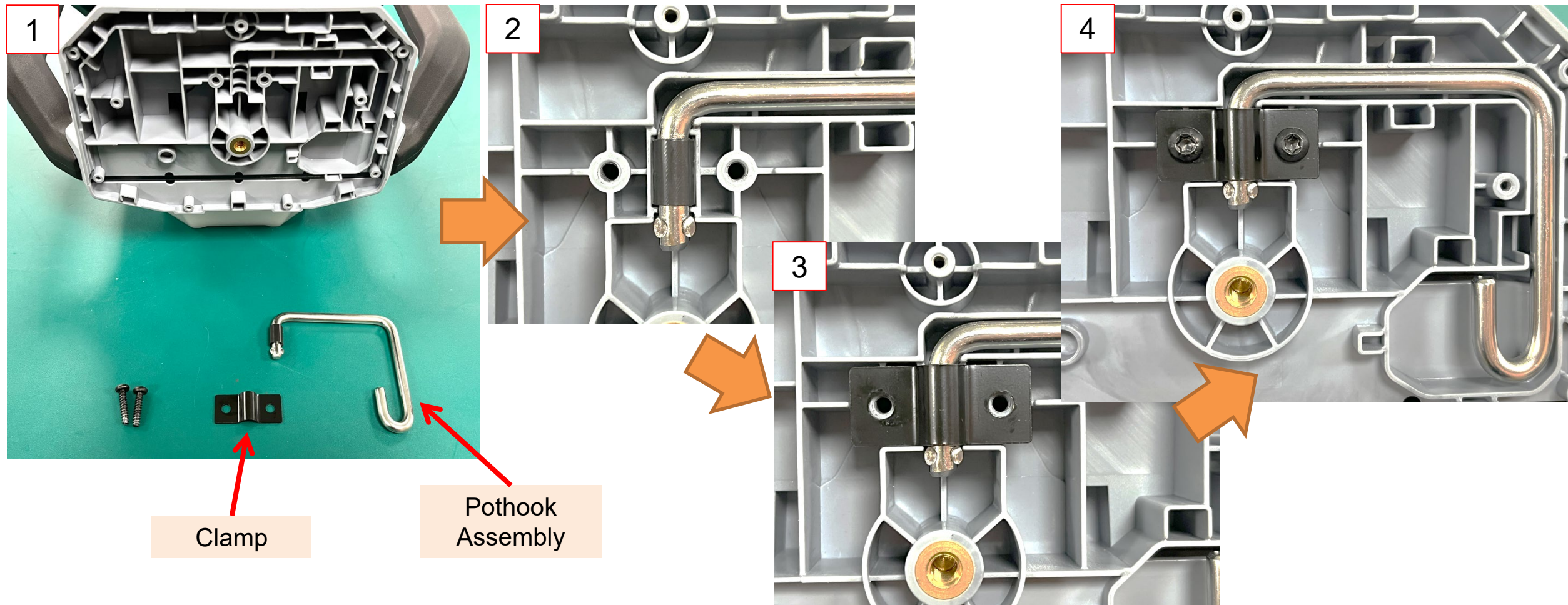
20. Use a Torx T15 bit to fasten the 6 screws to secure the front housing.



# How to replace the LED Electric Assembly

21. Place the pothook assembly into the mounting slot.

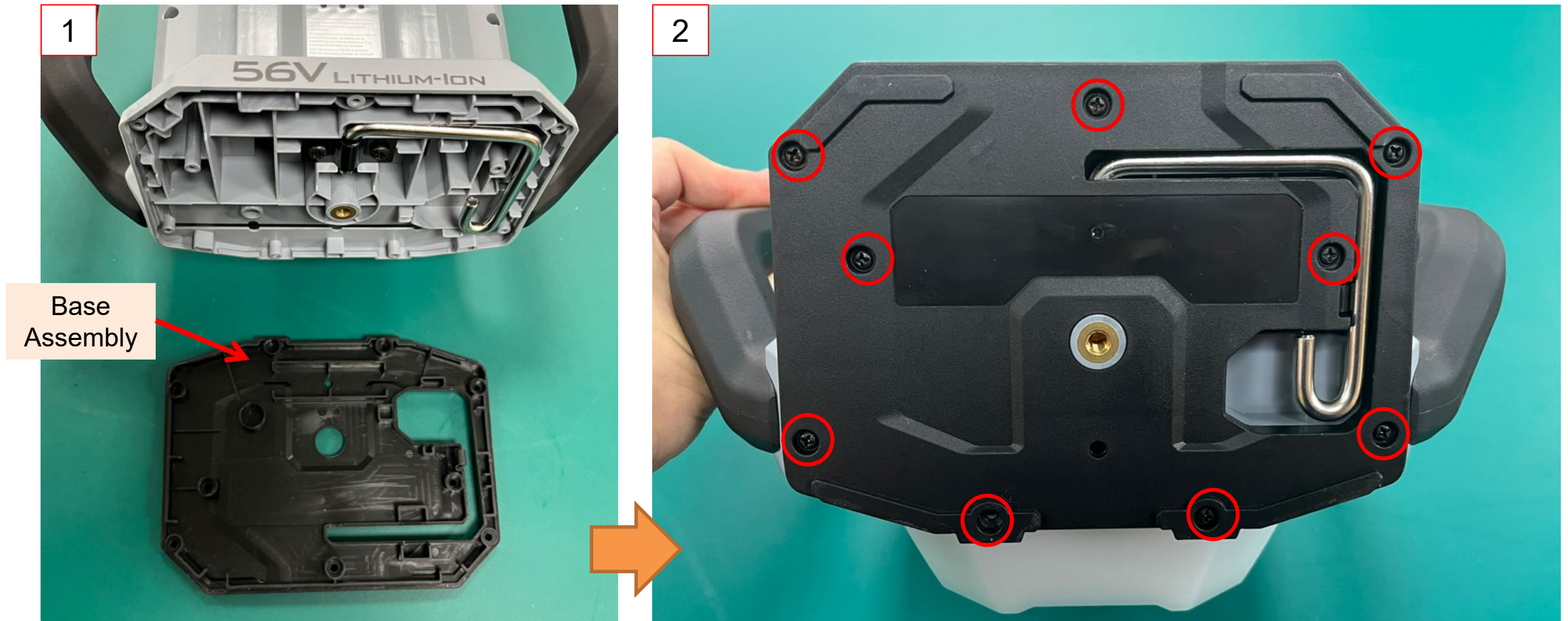
22. Align and place the clamp on the pothook assembly and secure with 2 T20 screws.



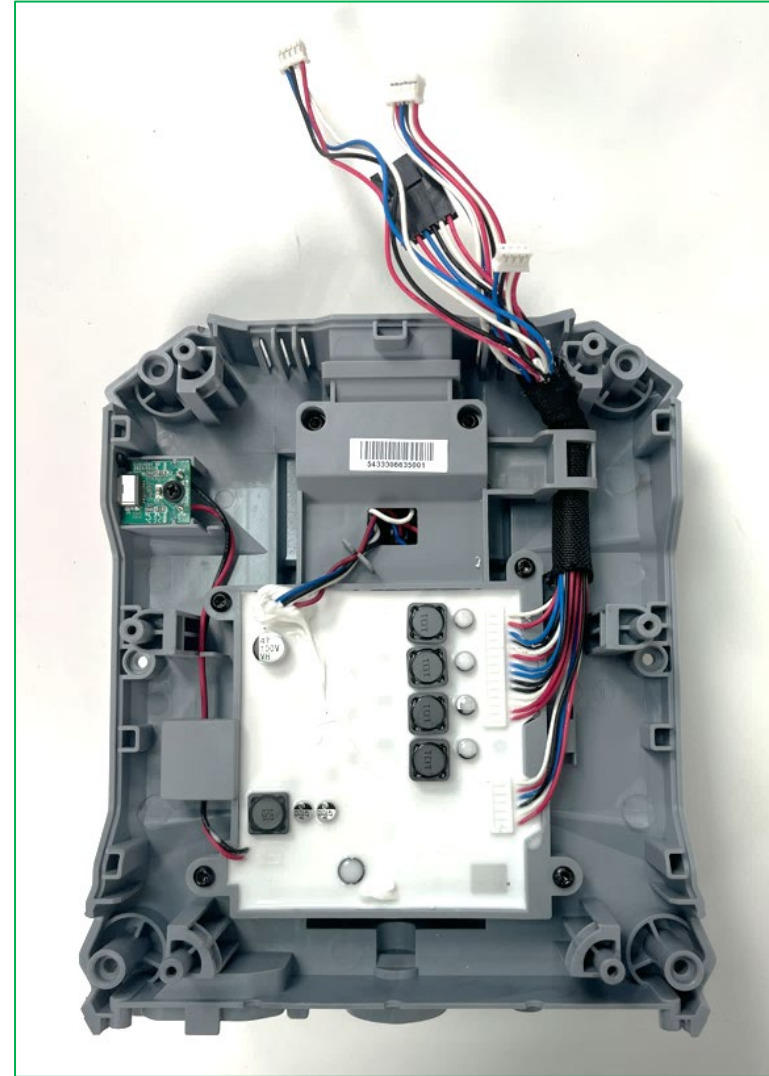
# How to replace the LED Electric Assembly

23. Mount the base assembly onto the light.

24. Use a PH2 bit to fasten the 9 screws to secure the base assembly with the light,

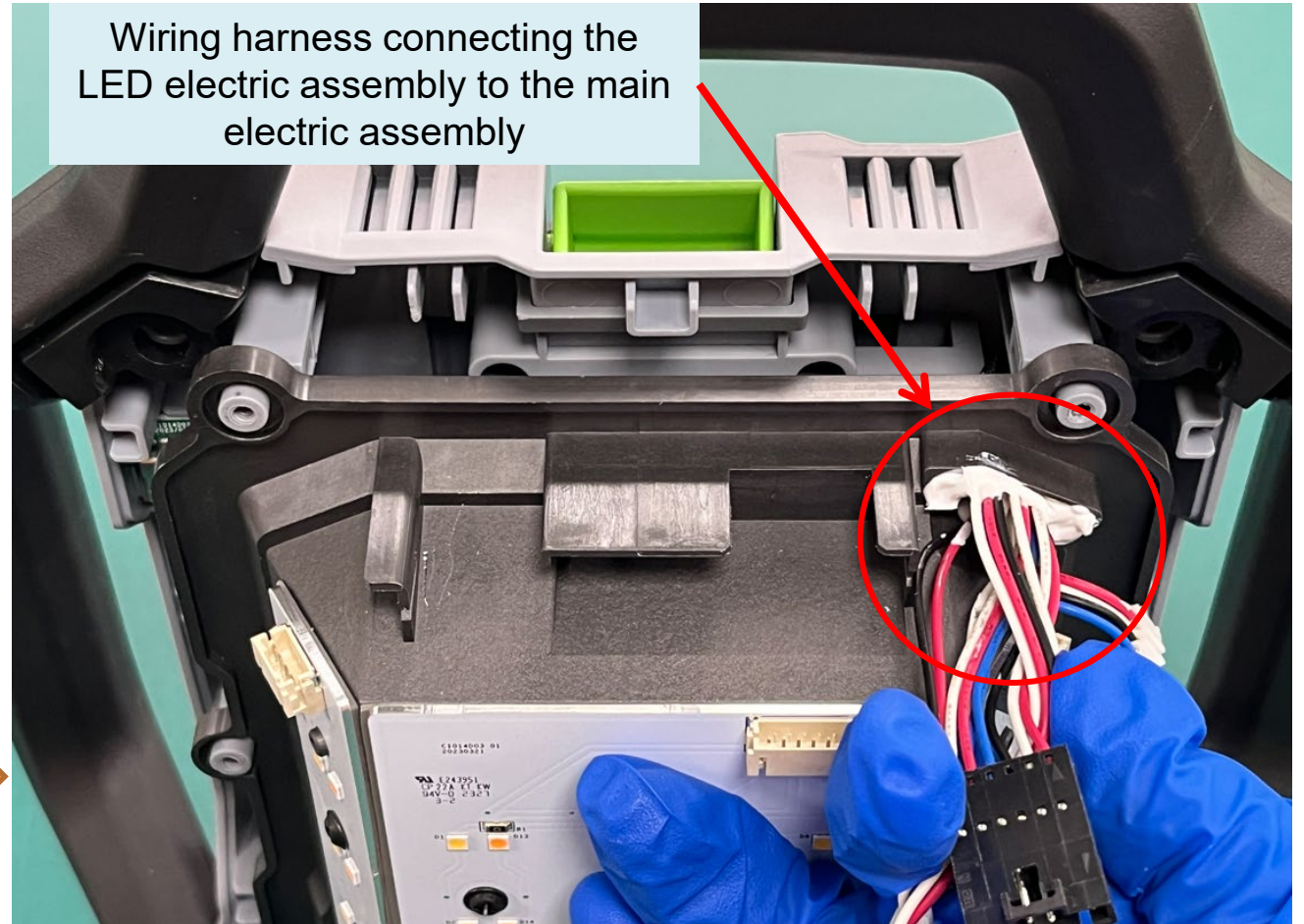
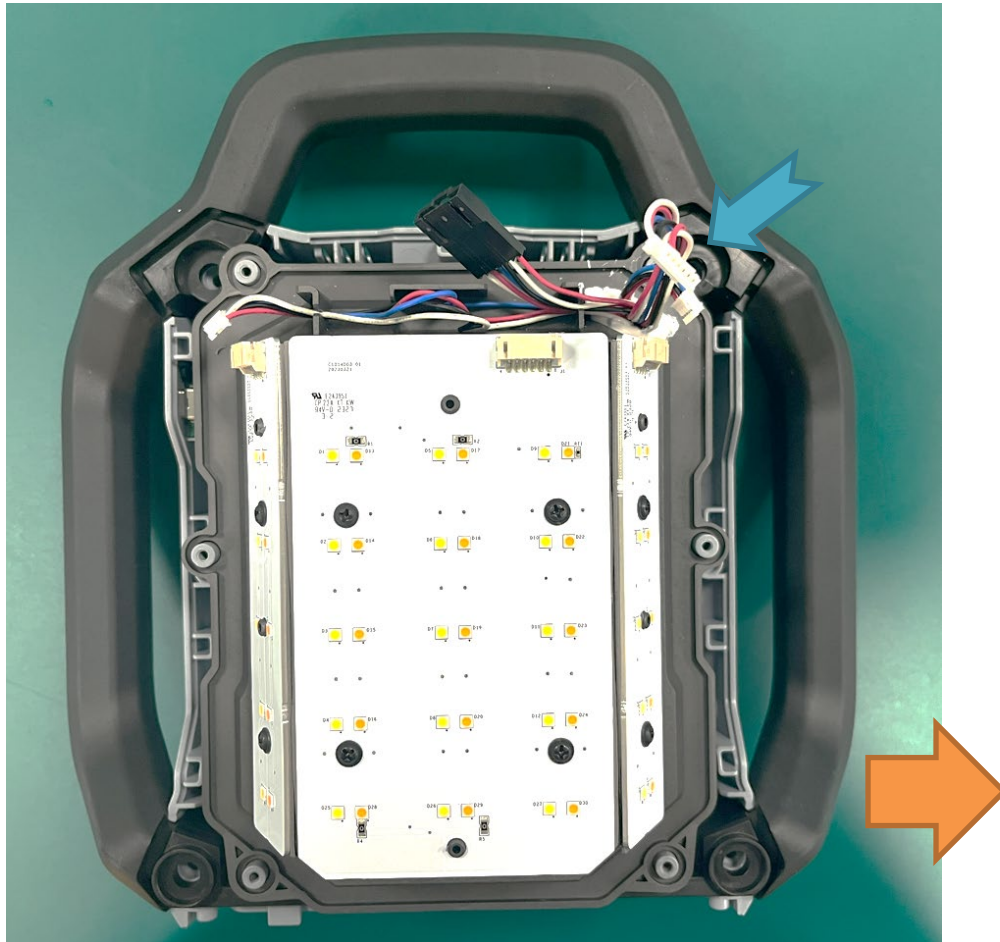


## How to replace the Main Electric Assembly



# How to replace the Main Electric Assembly

1. Follow the instructions in the “How to replace the LED Electric Assembly” section to expose the wiring harness feed-through slot as shown below.

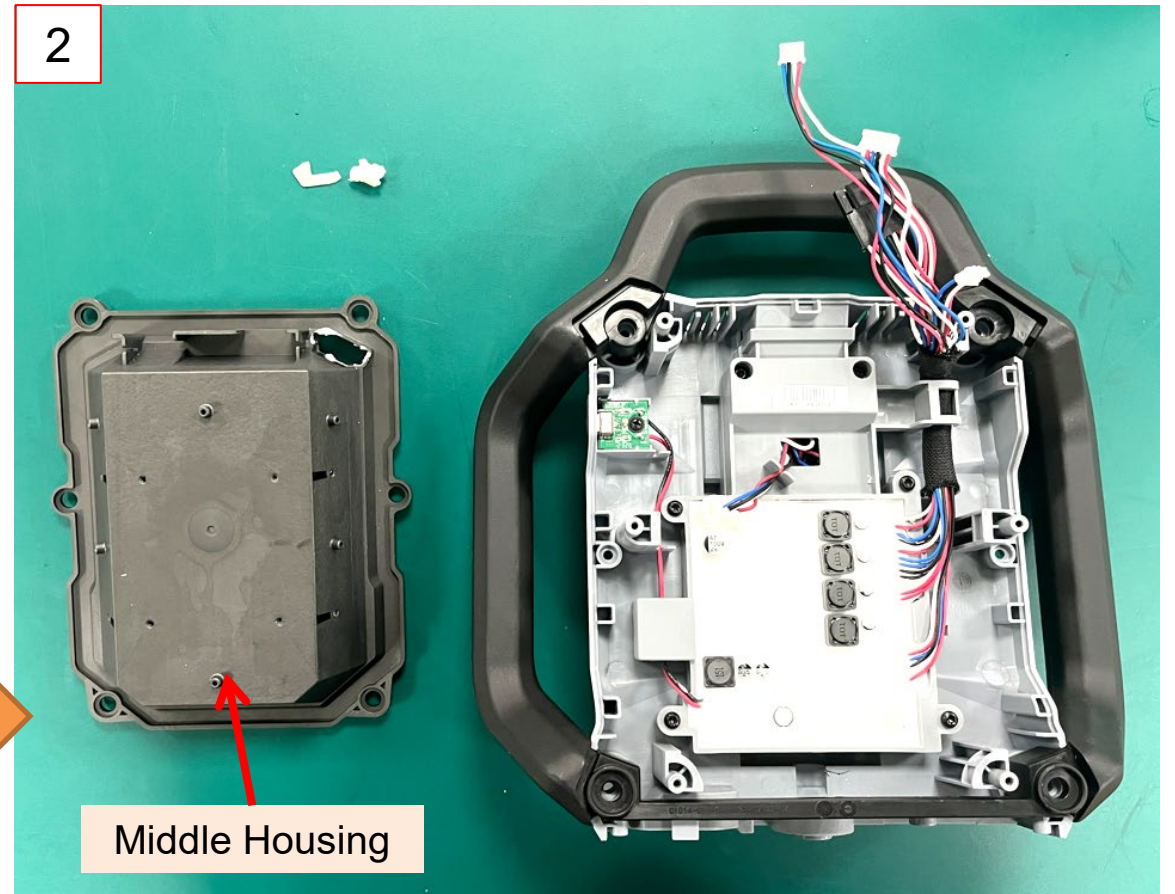
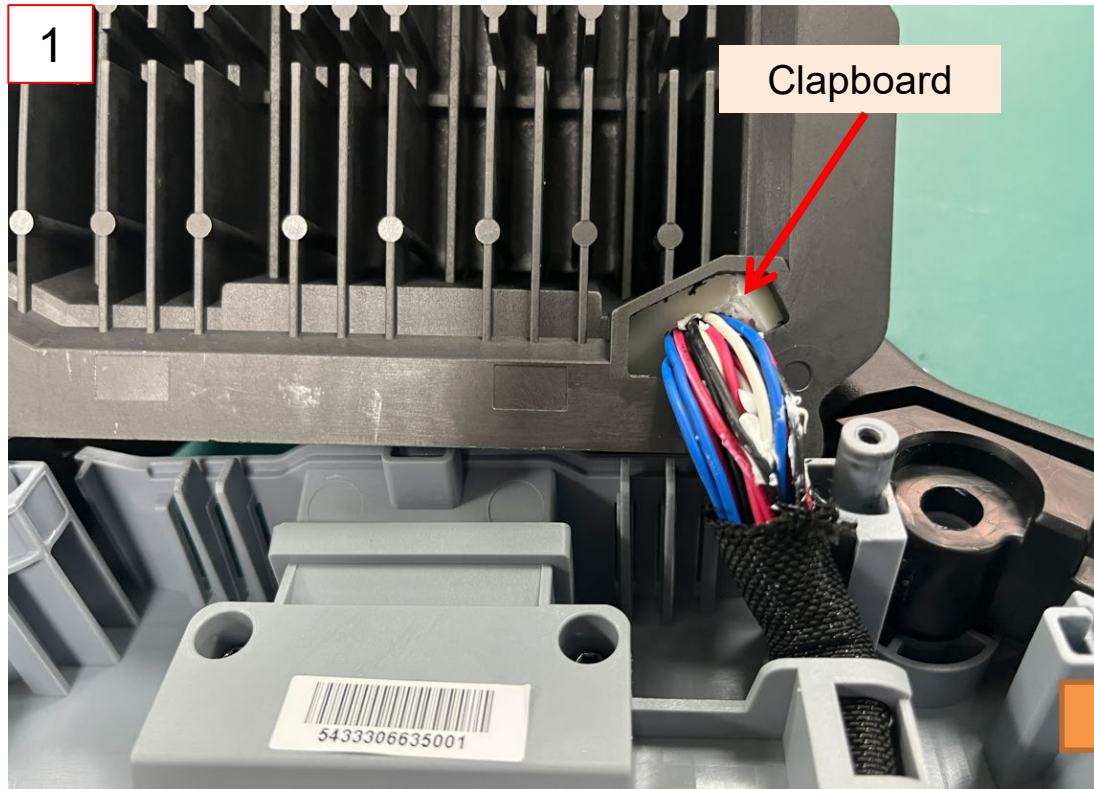




# How to replace the Main Electric Assembly

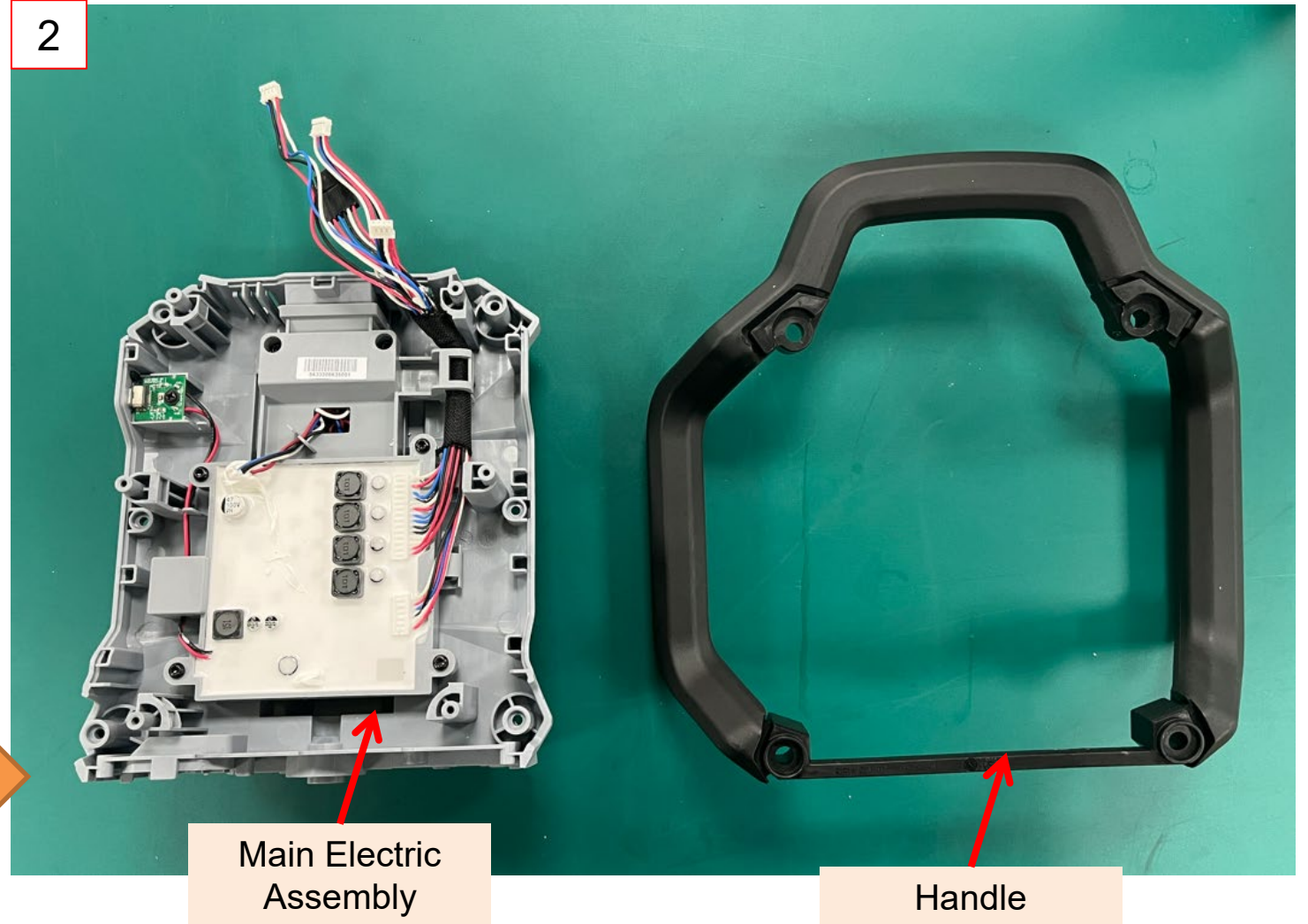
2. Use a slender screwdriver to break the clapboard and sealing glue to separate the middle housing and the main electric assembly.
3. The middle housing can be replaced after removing the LED electric assembly.

Note: A new clapboard will be needed to replace the main electric assembly.



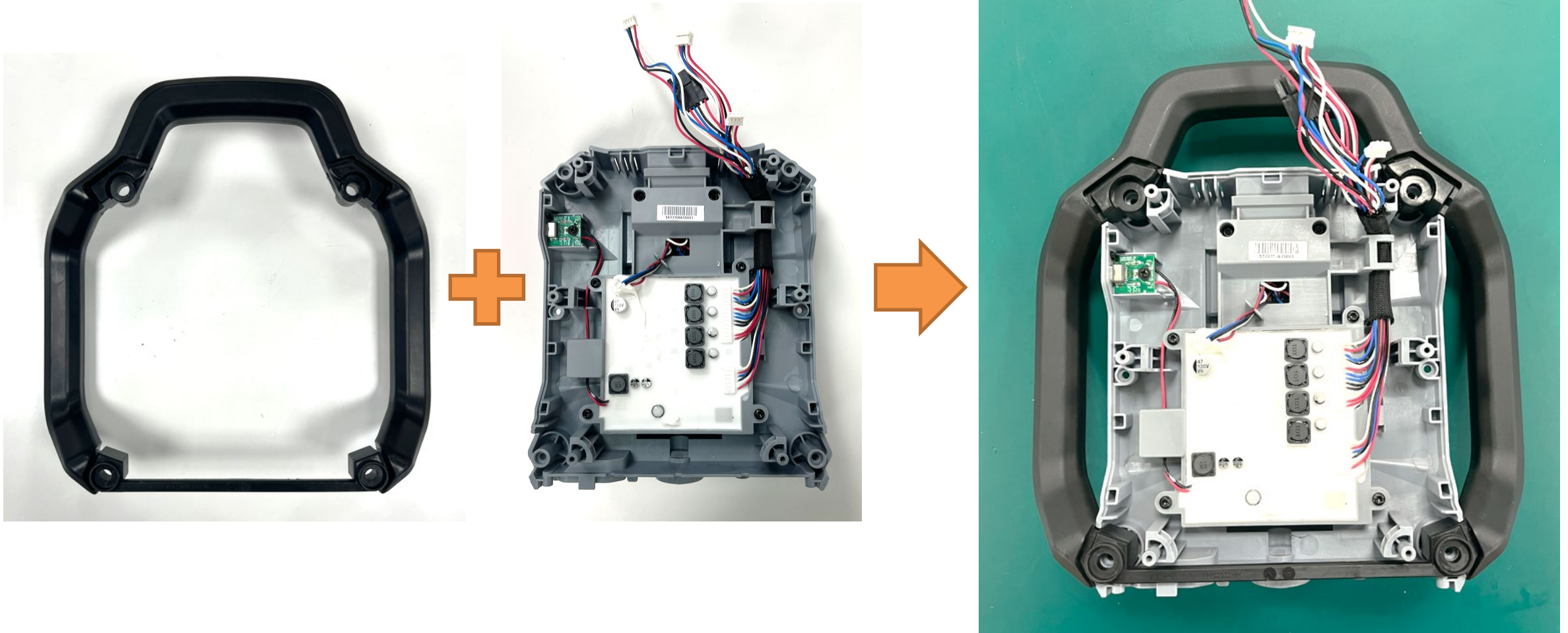
# How to replace the Main Electric Assembly

4. Separate the handle and the main electric assembly. Replace any part as needed.



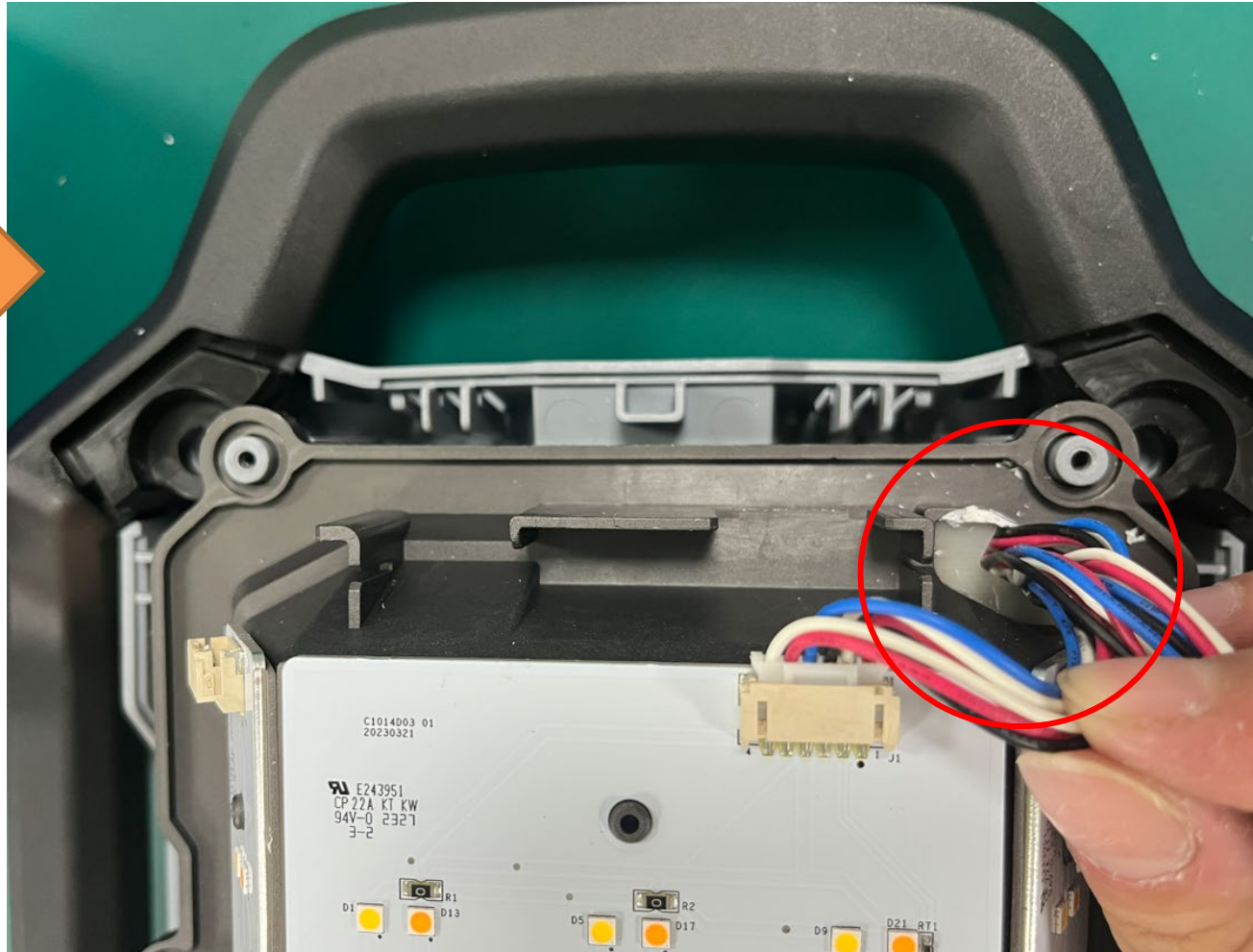
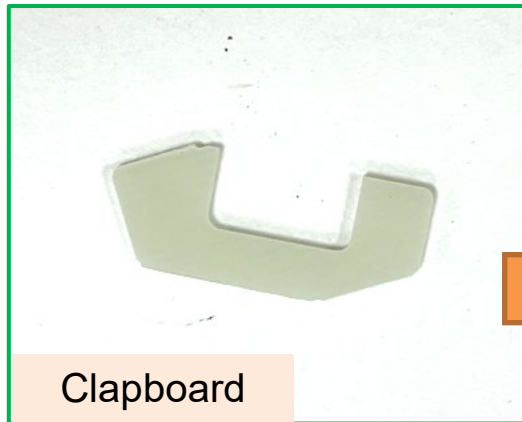
# How to replace the Main Electric Assembly

5. Mount the handle onto the main electric assembly.



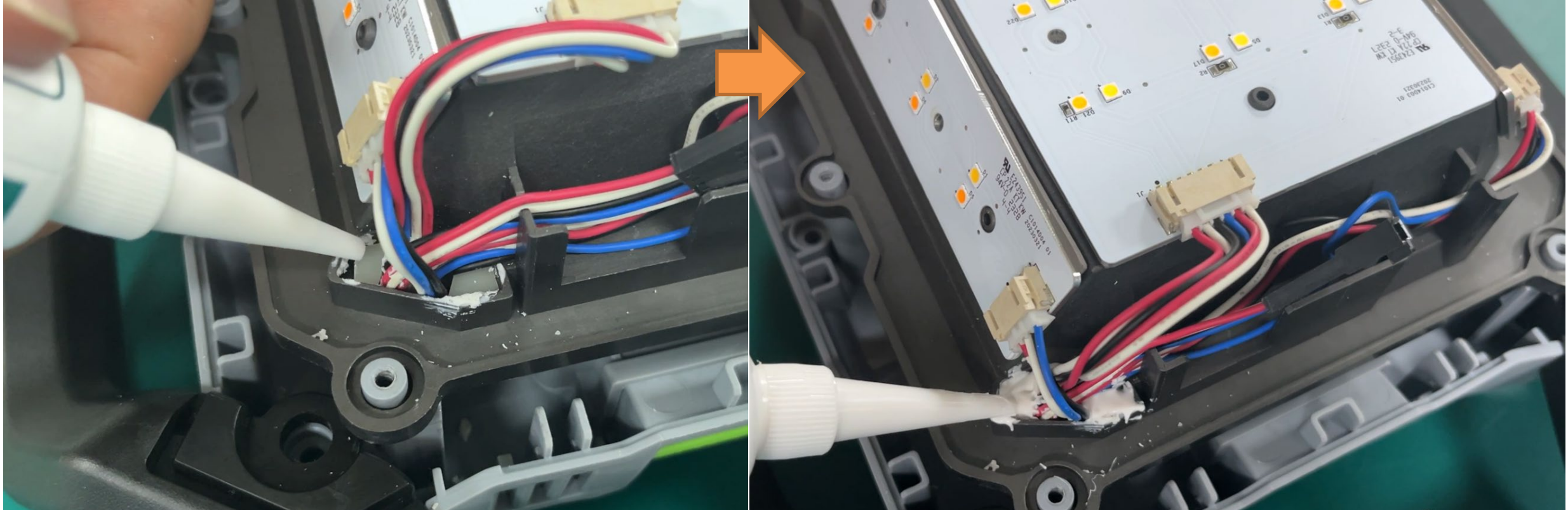
# How to replace the Main Electric Assembly

6. Pass the wiring harness through the slot and re-connect with the LED electric assembly.
7. Place a new clapboard to cover the slot.



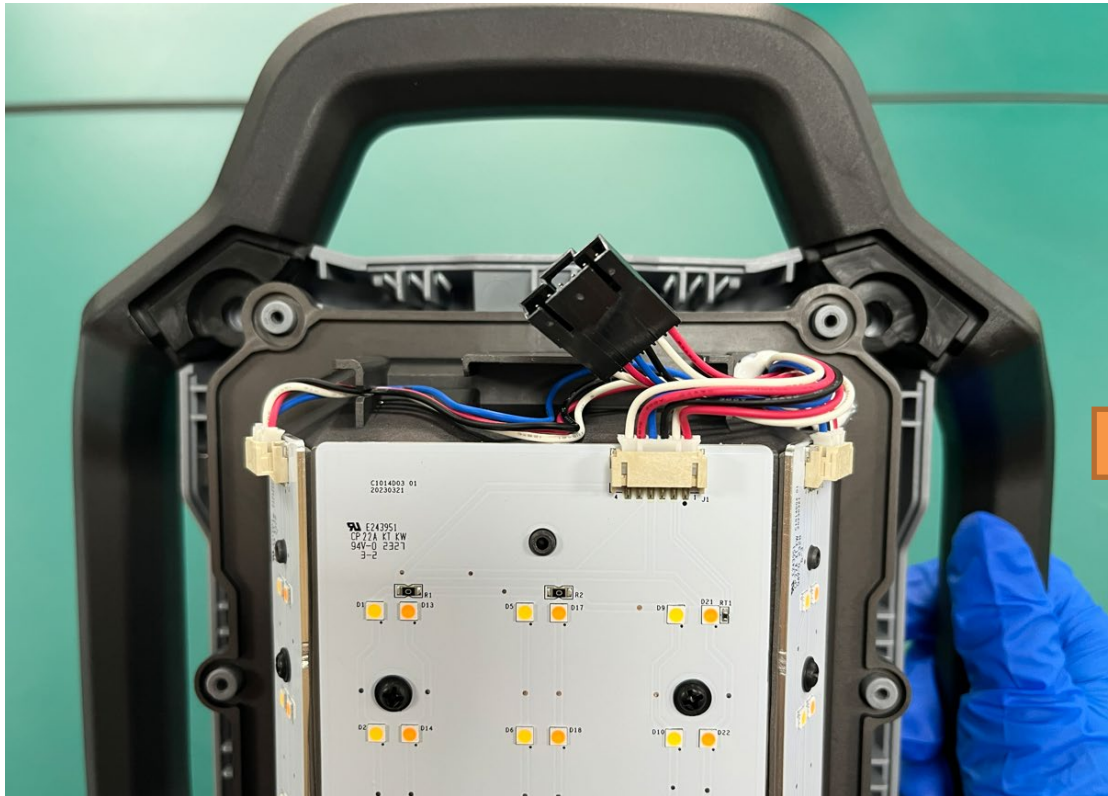
# How to replace the Main Electric Assembly

8. Carefully apply sealing glue to cover the wiring harness feed-through slot.



# How to replace the Main Electric Assembly

9. Follow the instructions in the “How to replace the LED Electric Assembly” section to re-assemble the light.



THE END