

REPAIR GUIDELINE

Line Trimmer Attachment_STA1500



Version: 2

Issue Date: 10/08/2018

Table of Contents

NO.	Contents	Page
1	Troubleshooting	3
2	Tool list	4
3	Part 1: Replace the Housing Assembly and Gear Case	5-30

Troubleshooting

Problem	Possible Cause	Fault Position	Test & Solution
Not feeding line	Poor cutting line	Trimmer line	Replace the cutting line. (e.g. 2.4mm nylon line)
Hard to wind up line	Support of the lower housing assembly is worn	Lower housing assembly	Replace the lower housing assembly
Not cutting the line	Blade on the guard assembly is worn	Guard assembly	Replace the guard assembly

Tool List For Repair

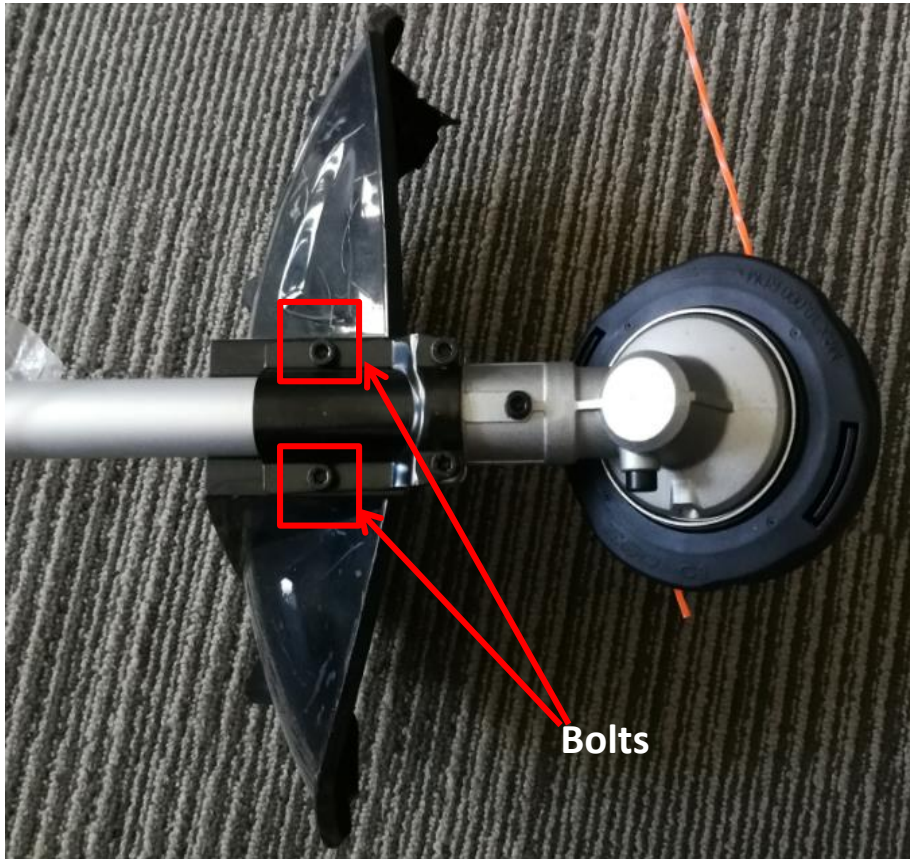
NO.	Tool List	SPEC	Remark
1	Socket wrench	14mm	
2	Hex wrench	4mm	

Part 1: Replace the Housing Assembly and Gear Case

1. Replace the Housing Assembly and Gear Case

BC3800E BRUSHCUTTER

1. Loosen 2 screws to disassemble the guard assembly, if the guard assembly is broken, replace it with a new one.



Description	Part Number	Qty.
Tapping screw	5620216003	2
Guard assembly	2824957002	1

1. Replace the Housing Assembly and Gear Case

BC3800E BRUSHCUTTER

2. Press the release tabs to remove the lower housing assembly.



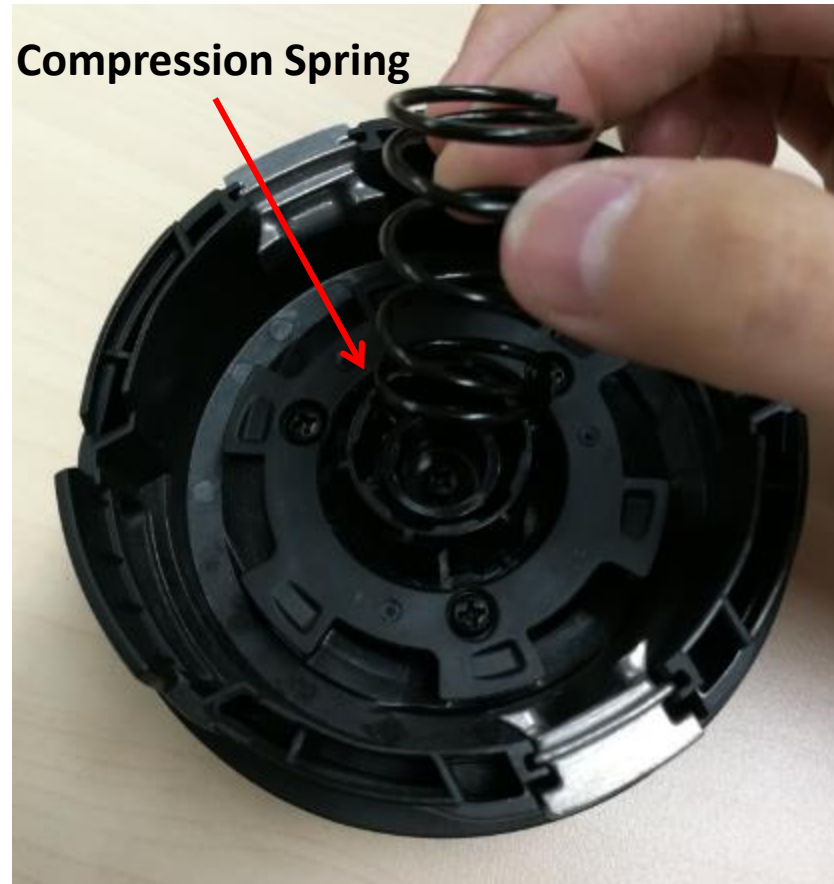
Description	Part Number	Qty.
Lower Housing Assembly	2826637001	1

lower housing assembly

1. Replace the Housing Assembly and Gear Case

BC3800E BRUSHCUTTER

3. Take the spring out of the lower housing assembly.

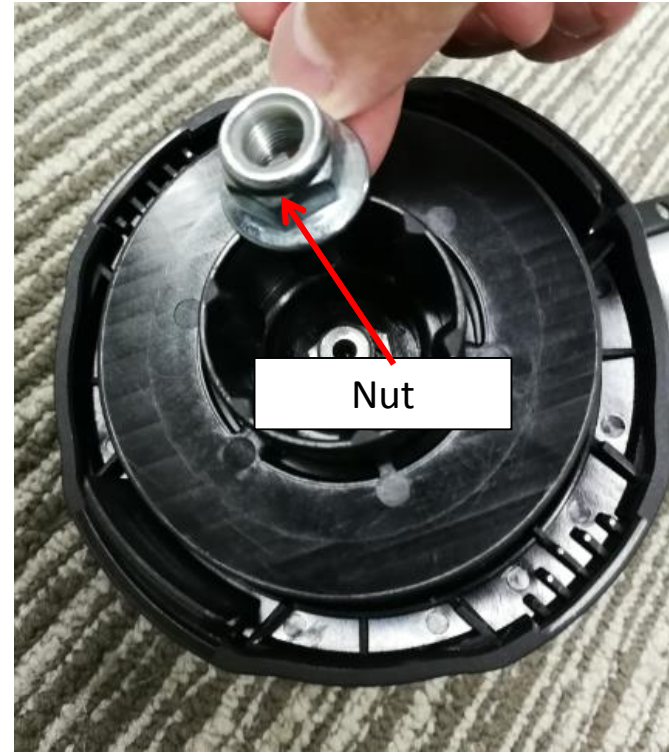


Description	Part Number	Qty.
Compression Spring	3660582001	1

1. Replace the Housing Assembly and Gear Case

BC3800E BRUSHCUTTER

4. Rotate the nut clockwise to remove the nut.



Description	Part Number	Qty.
Nut	5630292001	1

1. Replace the Housing Assembly and Gear Case

BC3800E BRUSHCUTTER

5. Pull spool & upper cover & flange. Replace broken parts accordingly if necessary.

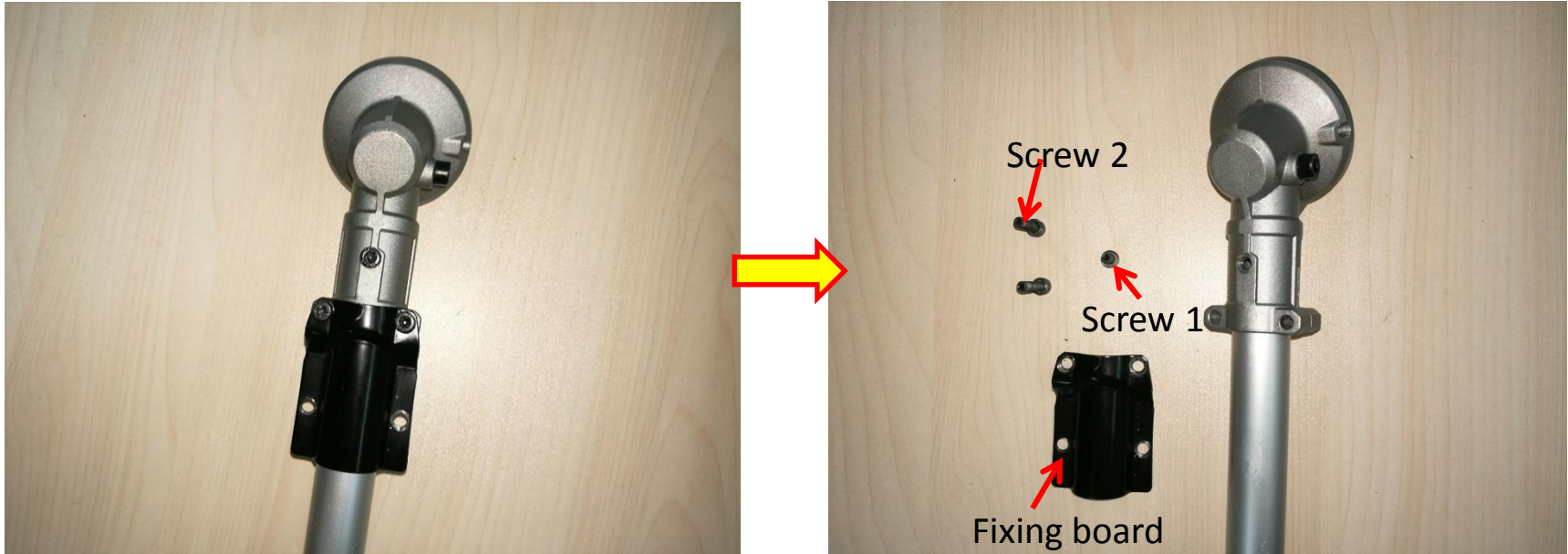


Description	Part Number	Qty.
Spool	2826376002	1
Upper cover	3130090001	1
flange	3552509001	1

1. Replace the Housing Assembly and Gear Case

BC3800E BRUSHCUTTER

6. Loosen 3 screws to remove the fixing board.



Description	Part Number	Qty.
Screw 1	5620213003	1
Screw 2	5620216003	2
Fixing board	3705417001	1

1. Replace the Housing Assembly and Gear Case

BC3800E BRUSHCUTTER

7. Pull the connecting tube with one hand and pull the gear case with the other hand to separate them from each other.

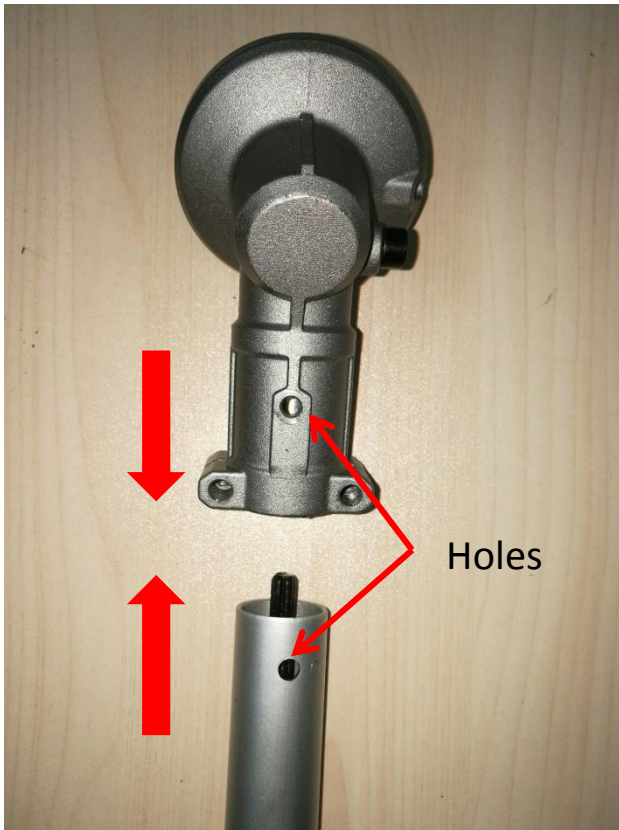


Description	Part Number	Qty.
Gear case	2824954002	1

1. Replace the Housing Assembly and Gear Case

BC3800E BRUSHCUTTER

8. With the hole in the gear case aligned with the hole in the tube, reassemble them into place.

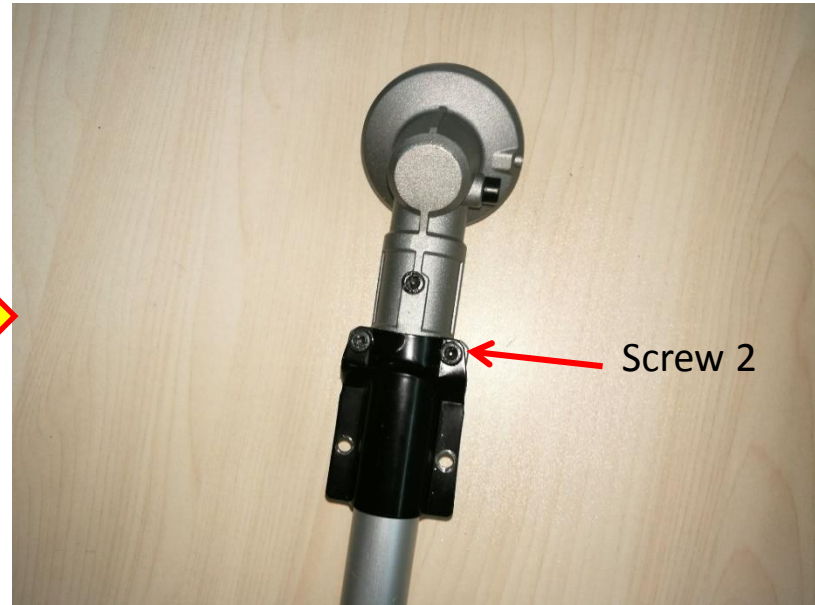
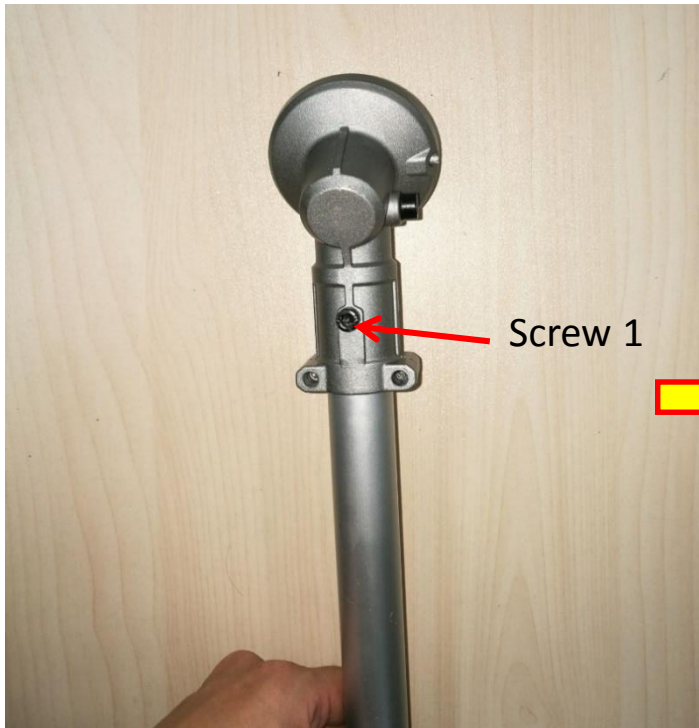


1. Replace the Housing Assembly and Gear Case

BC3800E BRUSHCUTTER

9. Tighten the gear case with the connecting tube with screw.

10. Tighten the fixing board with the gear case with screws.



1. Replace the Housing Assembly and Gear Case

BC3800E BRUSHCUTTER

11. Mount the flange onto the shaft.



1. Replace the Housing Assembly and Gear Case

BC3800E BRUSHCUTTER

12. Mount the flange cover onto the shaft.



1. Replace the Housing Assembly and Gear Case

BC3800E BRUSHCUTTER

13. Mount the upper housing and spool, then rotate the nut counter-clockwise with a socket wrench.



1. Replace the Housing Assembly and Gear Case

BC3800E BRUSHCUTTER

14. Align the tabs on the upper cover with the holes on the lower housing assembly to mount the lower housing assembly onto the upper housing assembly.



1. Replace the Housing Assembly and Gear Case

BC3800E BRUSHCUTTER

15. Refer to the user manual to install the cutting line.



THE END