

REPAIR GUIDELINE

Hedge Trimmer Attachment_HTA2000



^ ←

Version: 1

Issue Date: 12/16/2016

Table of Contents

NO.	Contents	Page
1	Troubleshooting	3
2	Tool list	4
3	Part 1: Replace the Blade and Gear	5-29

Troubleshooting

Problem	Possible Cause	Fault Position	Test & Solution
Blade stuck	Blade worn or stuck due to resin.	Blade	Replace the worn blade with a new one or clean the resin.
Noise	Lack of grease in gearbox.	Gear case	Add grease
Release button stuck	Release button broken or worn	Release button	Replace the release button with a new one

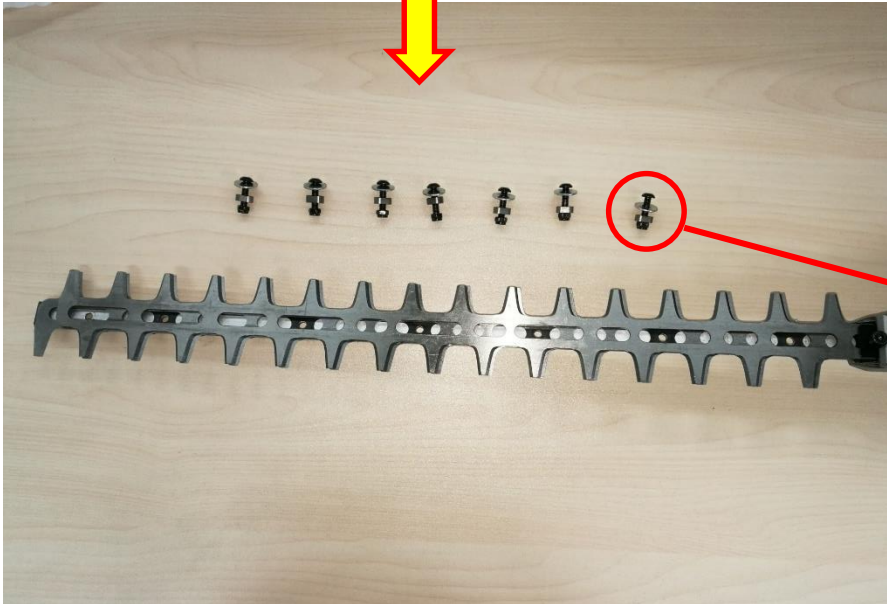
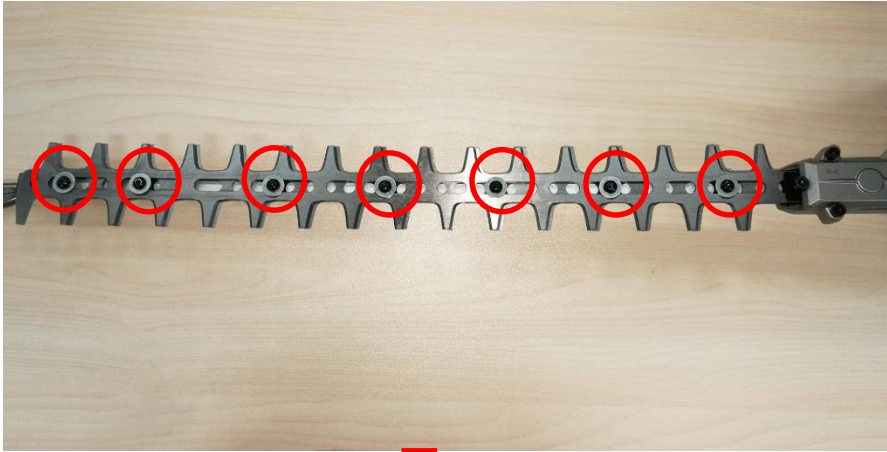
Tool List For Repair

NO.	Tool List	SPEC	Remark
1	Socket wrench	13mm	
2	Hex wrench	4mm, 2mm	

Part 1: Replace the Blade and Gear

Replace the Blade and Gear

1. Loosen the screws to remove the screws, plain washers, bushes and nuts.



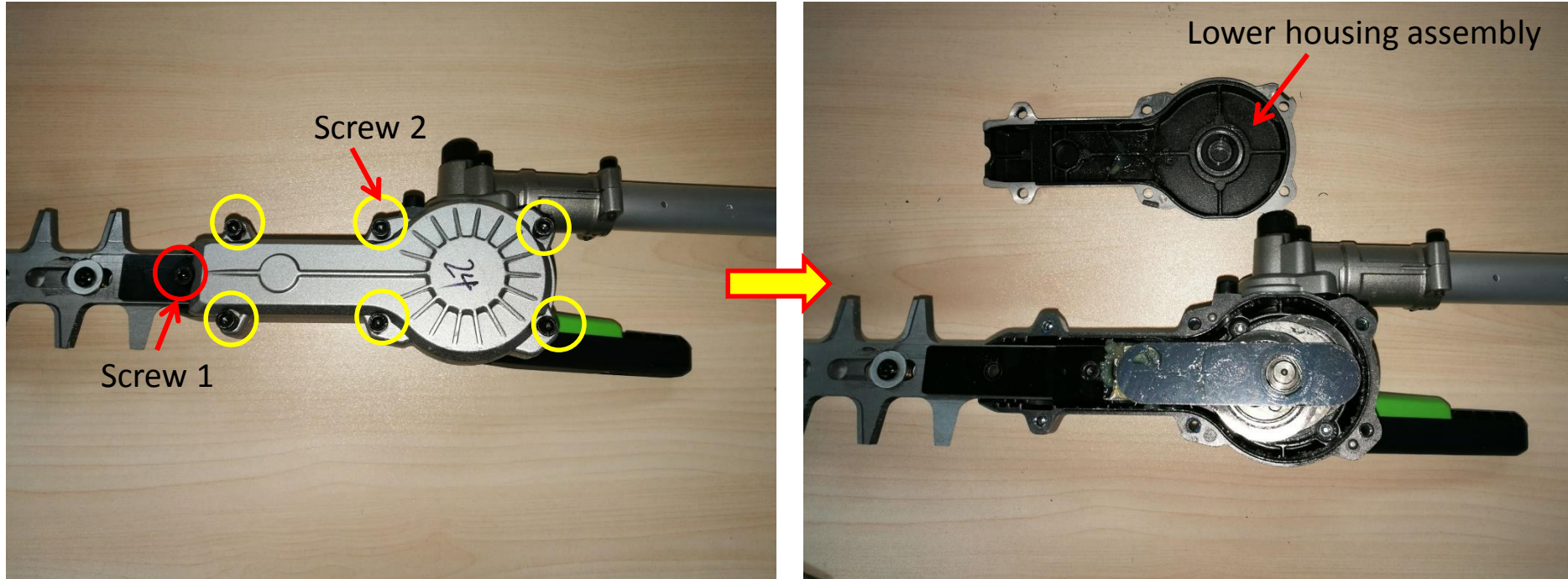
Description	Part Number	Qty.
Screw	5620543001	7
Plain washer	5650487001	7
Bush	5650531001	7
Nut	5630007006	7



Screw
Plain washer
Bush
Nut

Replace the Blade and Gear

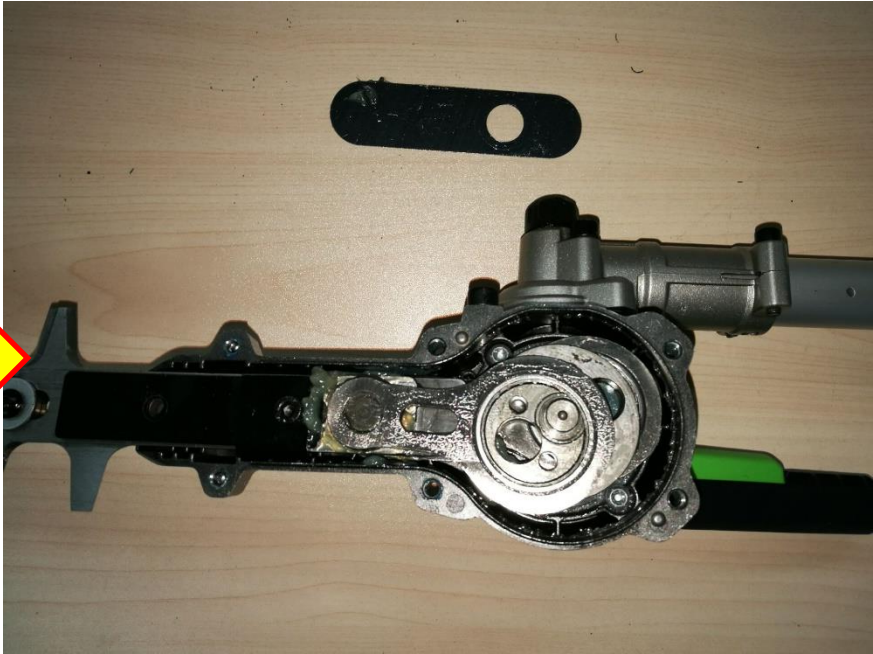
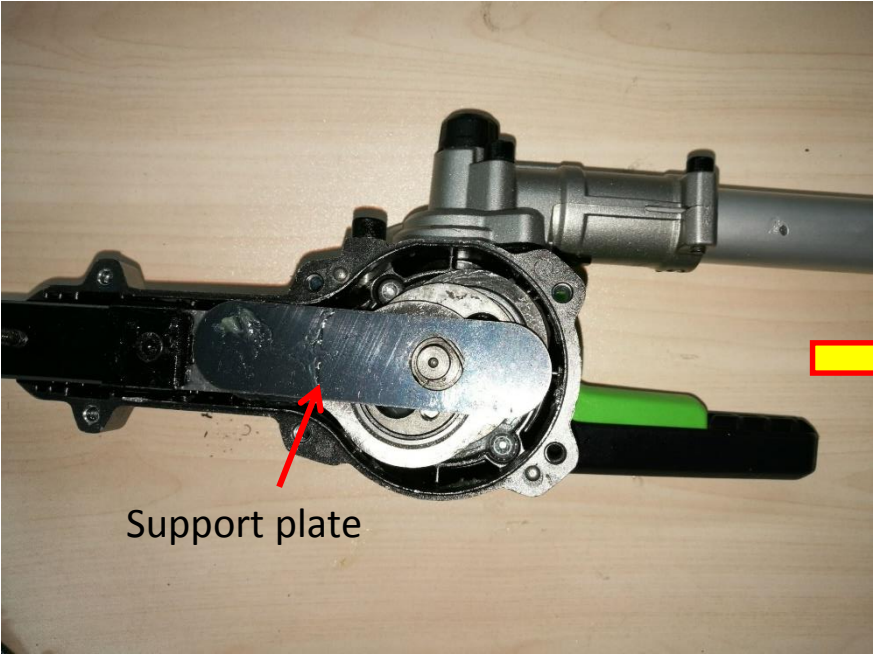
2. Loosen screw 1 and screw 2 to remove the lower housing assembly.



Description	Part Number	Qty.
Screw 1	5620216005	1
Screw 2	5620446005	6
Lower housing assembly	2824873002	1

Replace the Blade and Gear

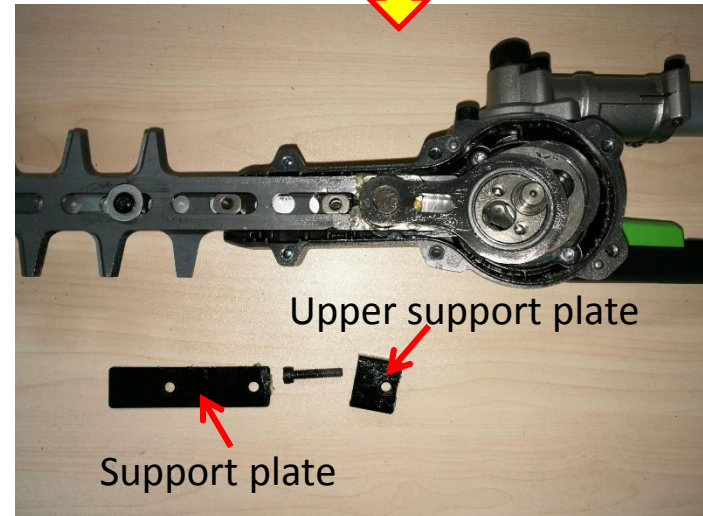
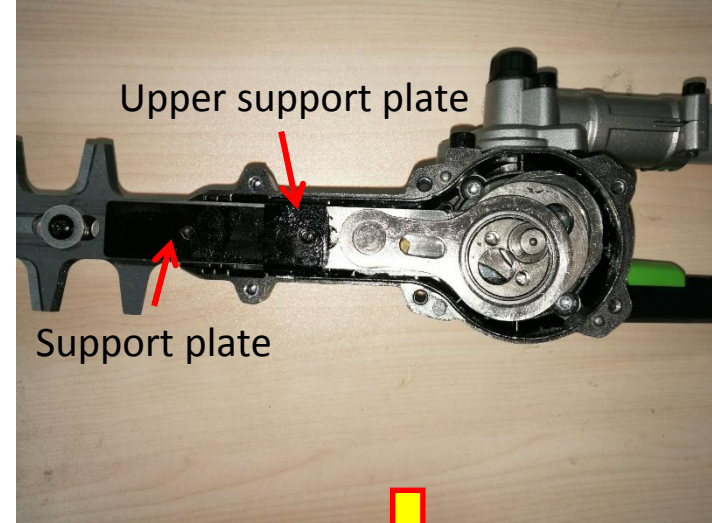
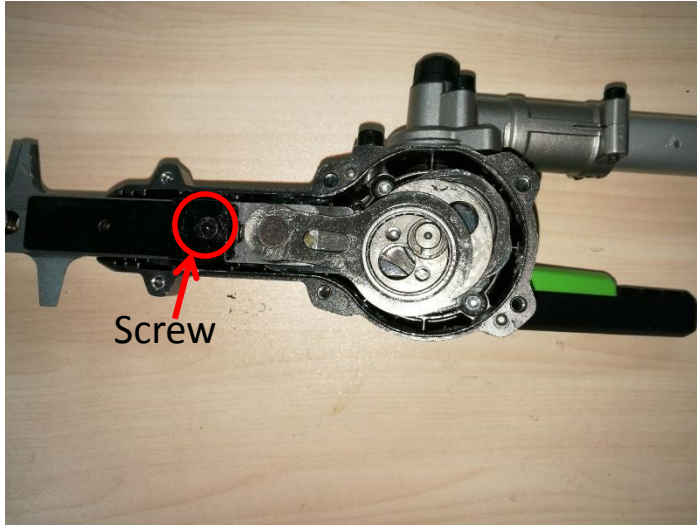
3. Remove the support plate.



Description	Part Number	Qty.
Support plate	3700736001	1

Replace the Blade and Gear

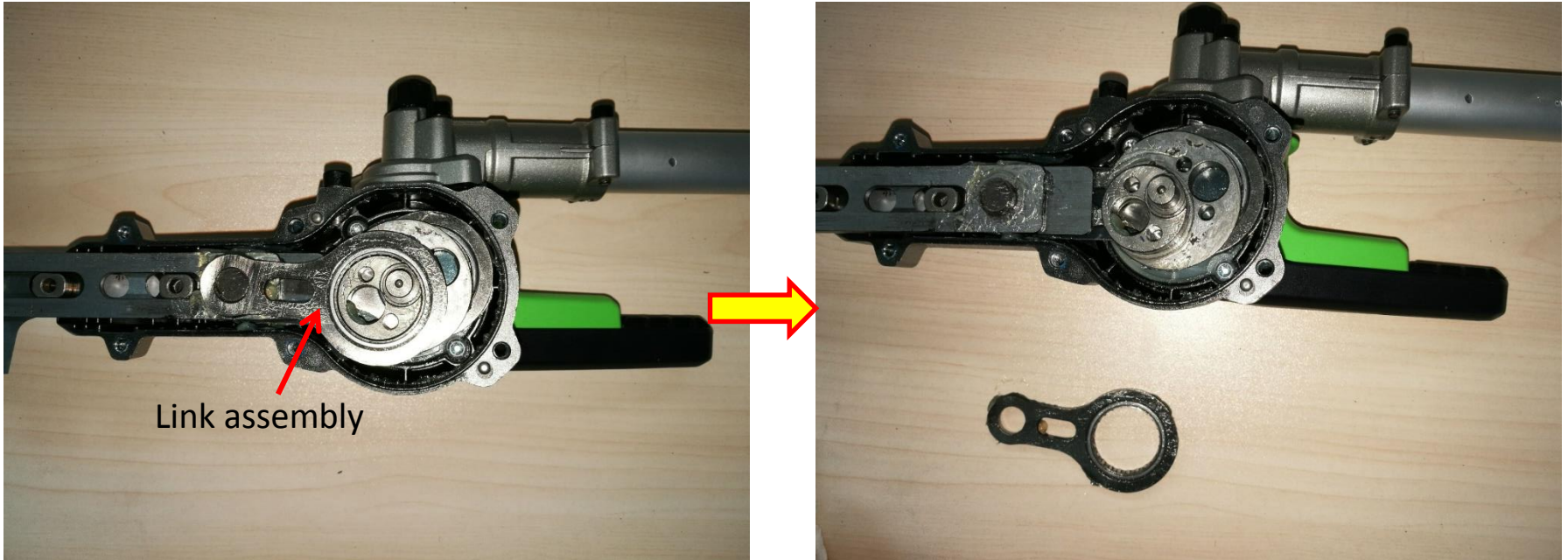
4. Loosen the screw to remove the upper support plate and support plate.



Description	Part Number	Qty.
Upper support plate	3706098001	1
Support plate	3705991001	1
Screw	5620216005	1

Replace the Blade and Gear

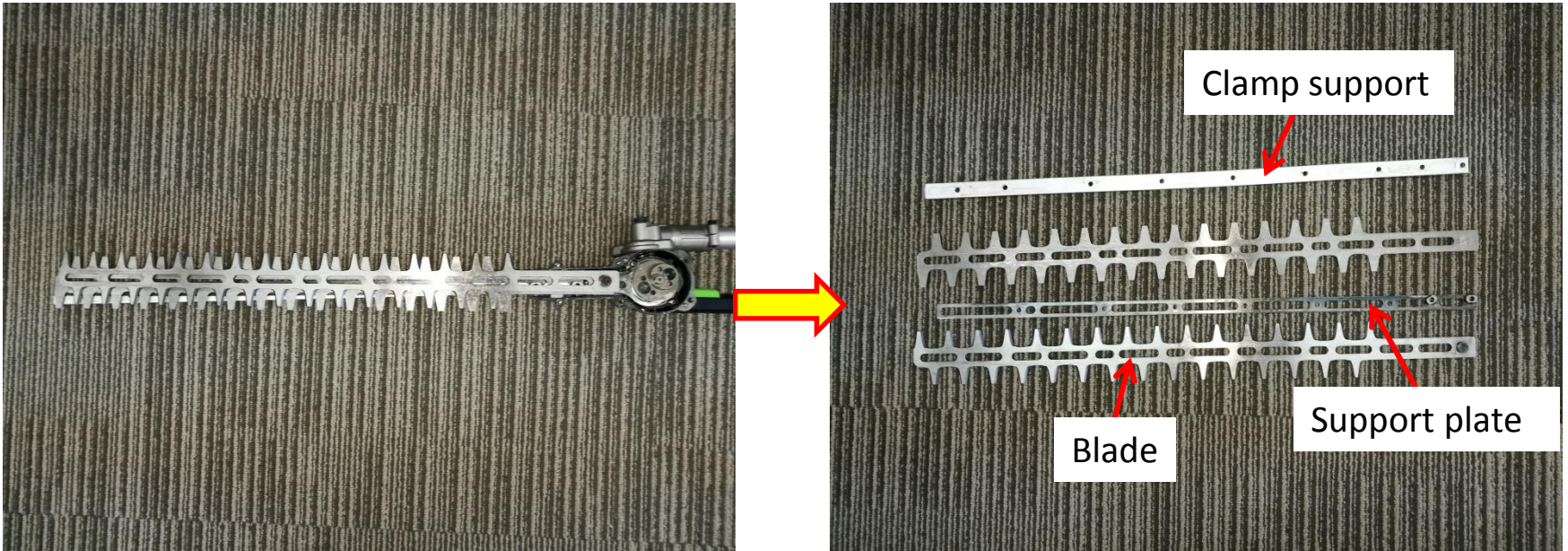
5. Remove the link assembly.



Description	Part Number	Qty.
Link assembly	2824890002	1

Replace the Blade and Gear

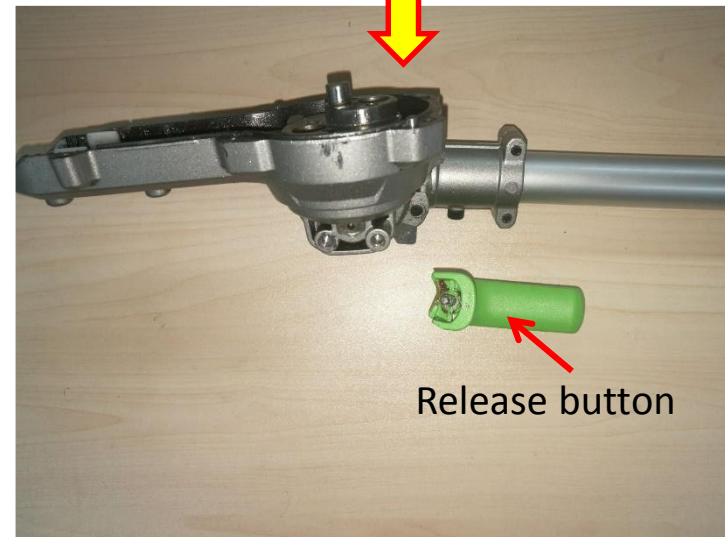
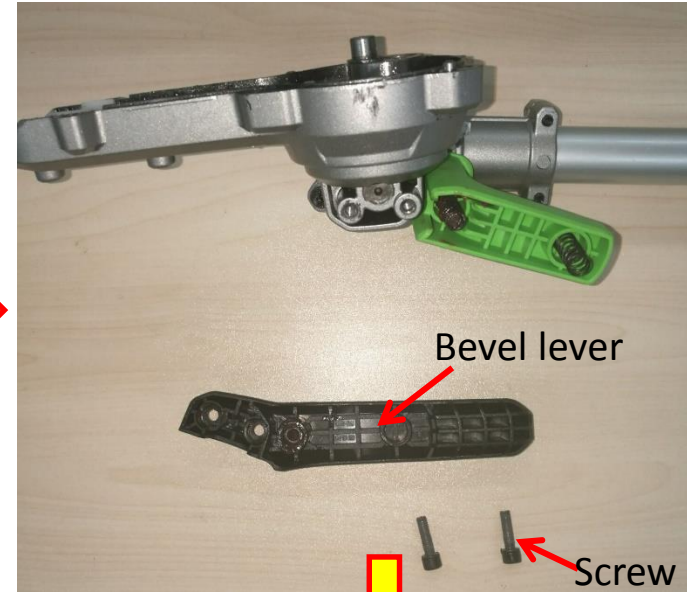
6. Remove the blades, support plate and clamp support.



Description	Part Number	Qty.
Clamp support	3552609001	1
Support plate	3706193001	1
Blade	3706167001	2

Replace the Blade and Gear

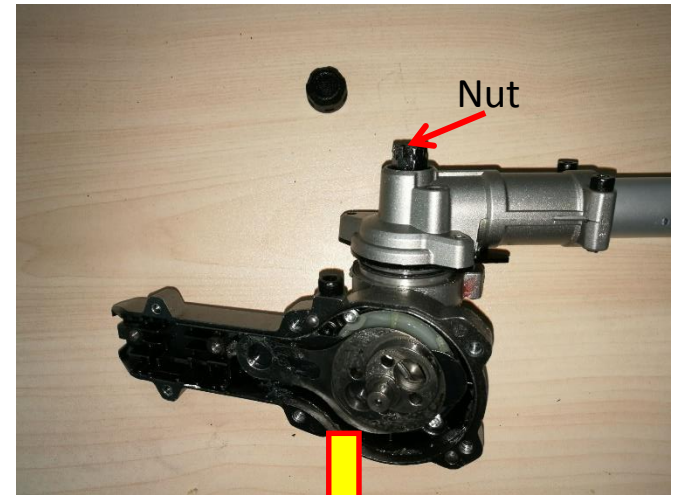
7. Loosen the 2 screws to remove the bevel lever and then remove the release button.



Description	Part Number	Qty.
Screw	5620446005	2
Bevel lever	3402842001	1
Release button	3402841001	1

Replace the Blade and Gear

8. Remove the cover and then loosen the nut to separate the left gear case assembly from the right gear case assembly.

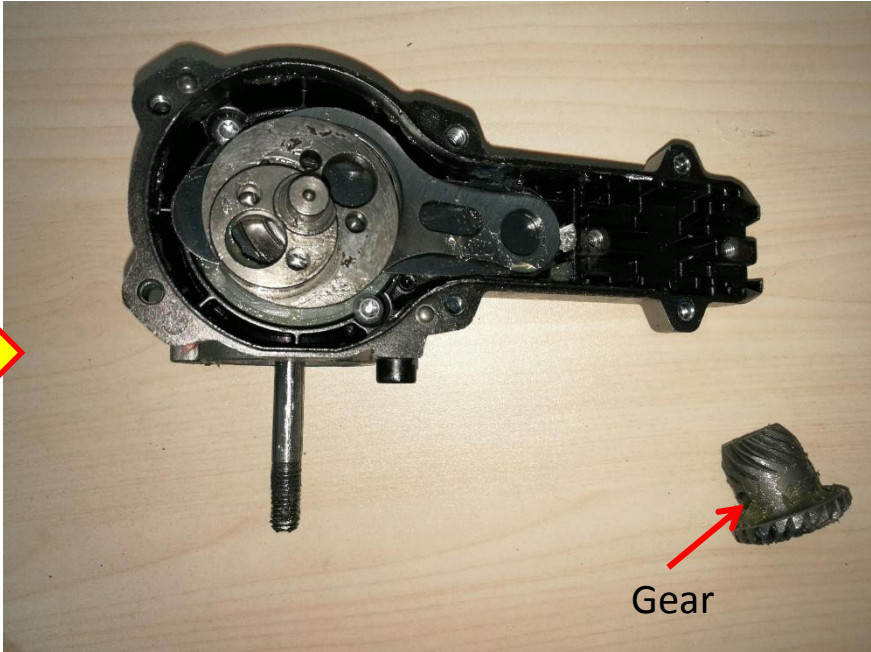
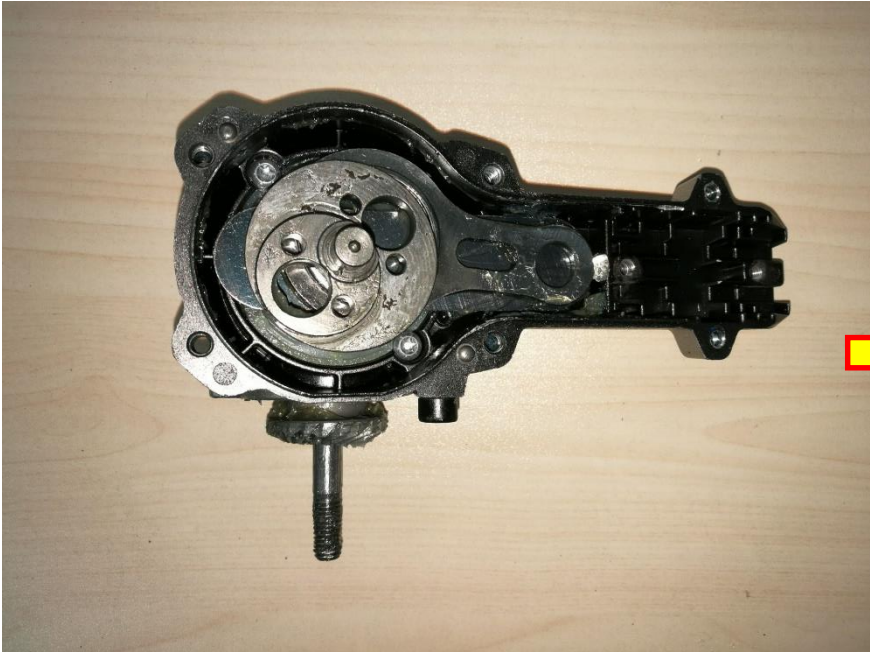


Right gear case assembly

Description	Part Number	Qty.
Nut	5630300001	1
Left gear case assembly	2824876002	1
Right gear case assembly	2824877002	1

Replace the Blade and Gear

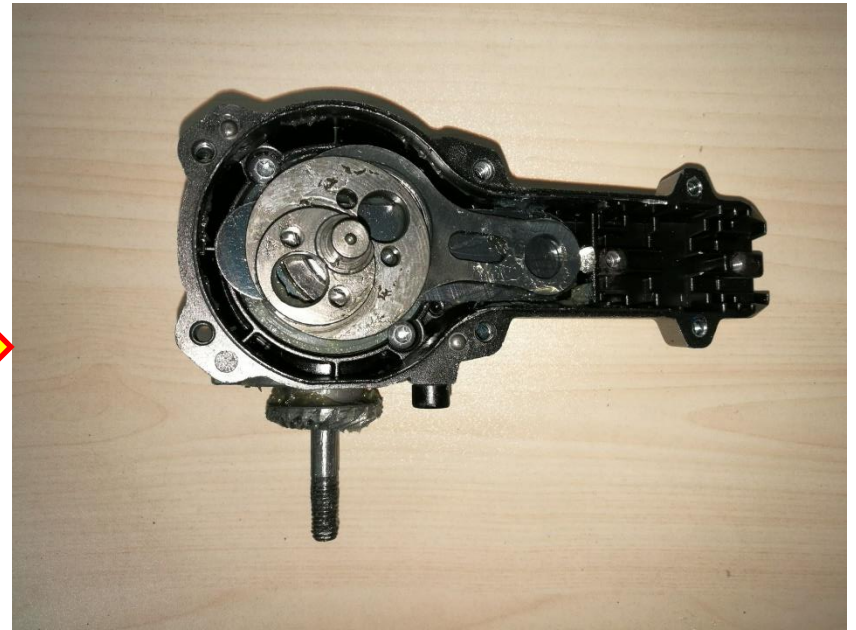
9. Remove the gear from the right gear case assembly.



Description	Part Number	Qty.
Gear	2824878002	1

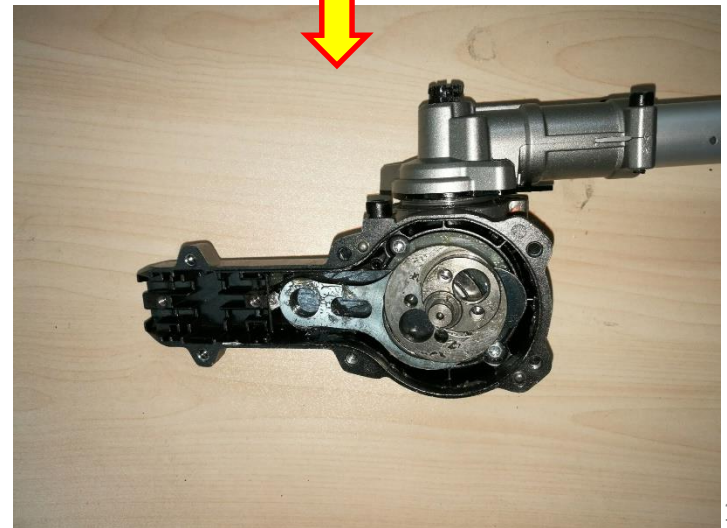
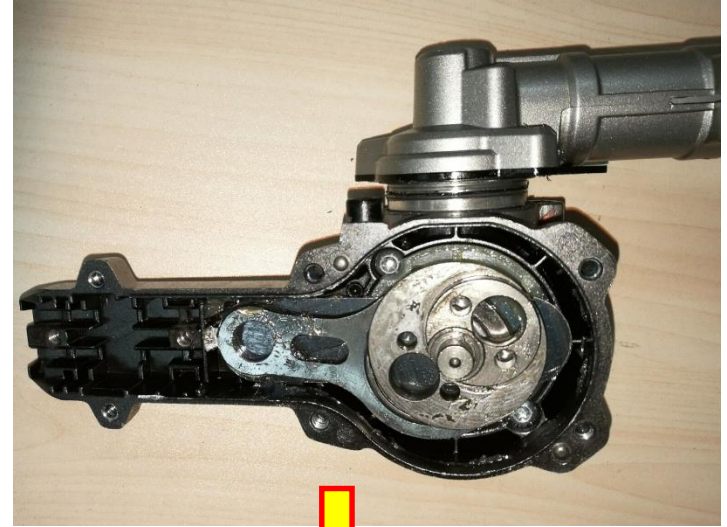
Replace the Blade and Gear

10. If any part is broken or worn, replace it with a new one.
11. Mount the gear onto the shaft of the right gear case assembly.



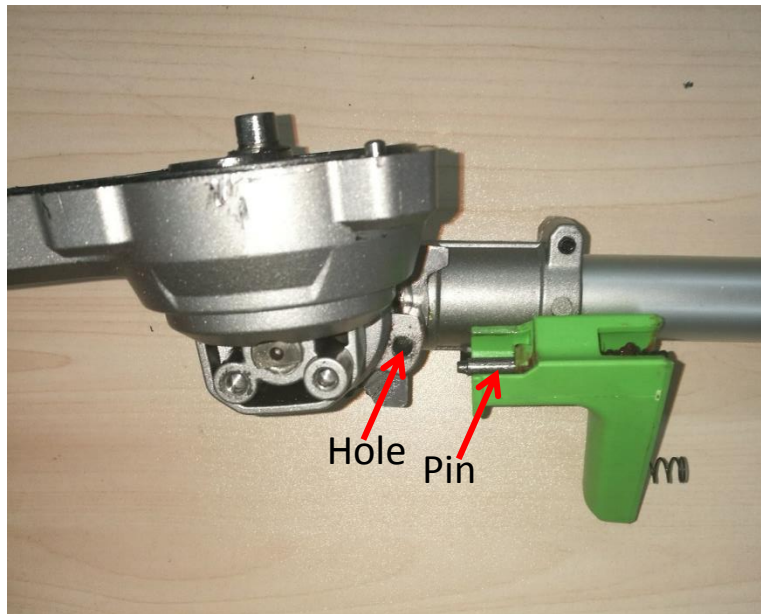
Replace the Blade and Gear

12. Insert the shaft on the right gear case assembly into the hole on the left gear case assembly and then tighten the nut to assemble them, after which mount the cover on the nut.



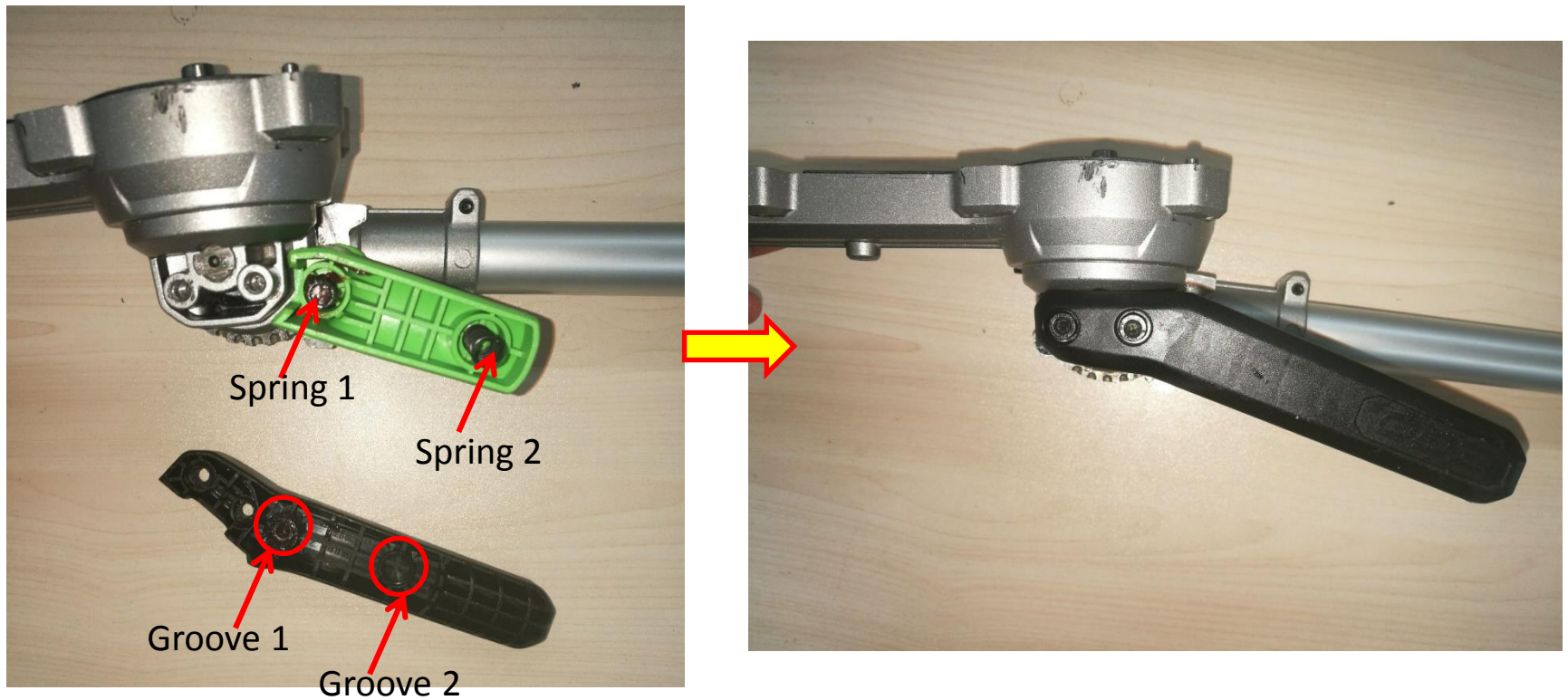
Replace the Blade and Gear

13. Insert the pin on the release button into the hole on the left gear case assembly to assemble them together.



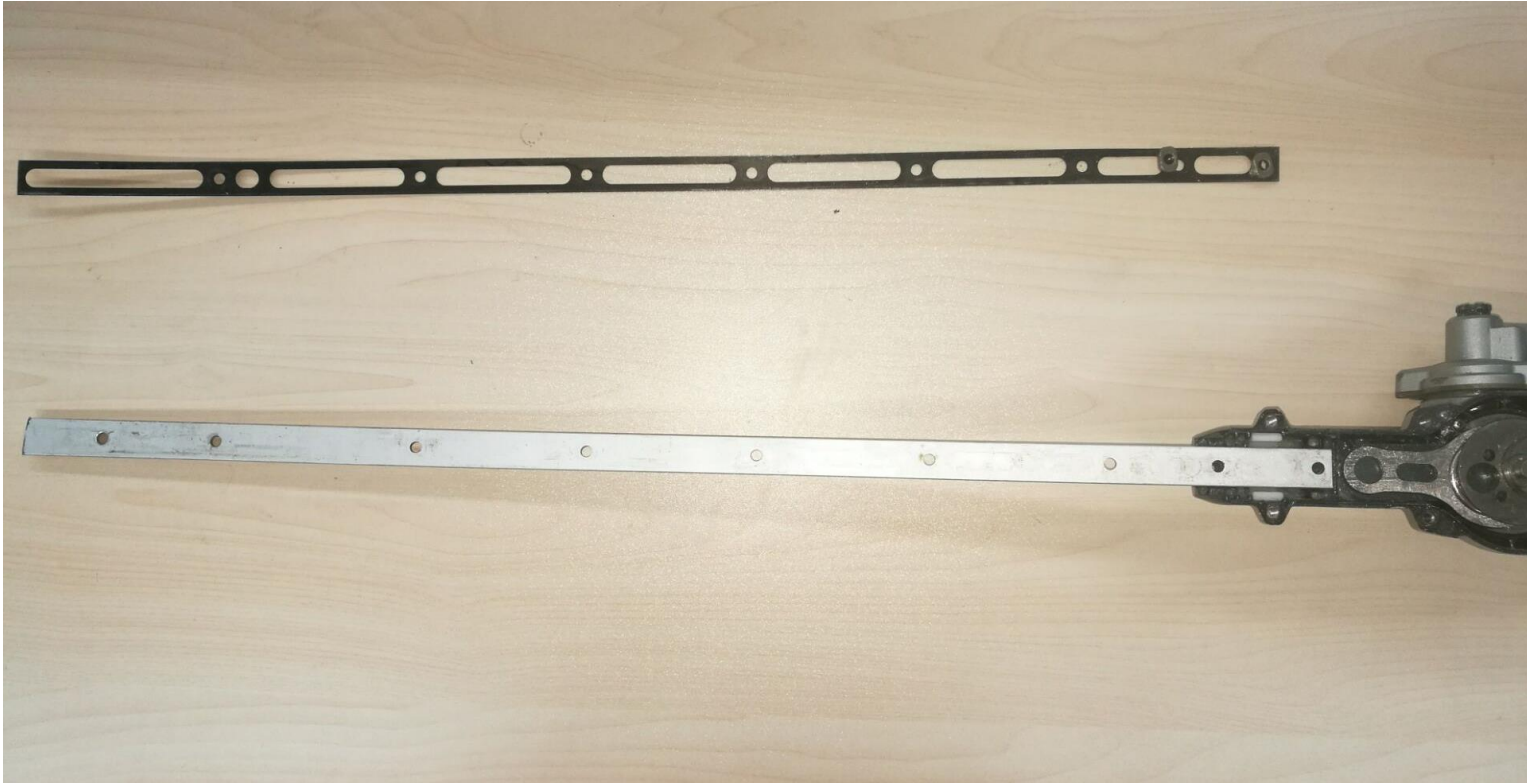
Replace the Blade and Gear

- Align spring 1 with groove 1 and spring 2 with groove 2 to assemble the bevel lever with the left gear case assembly with 2 screws.



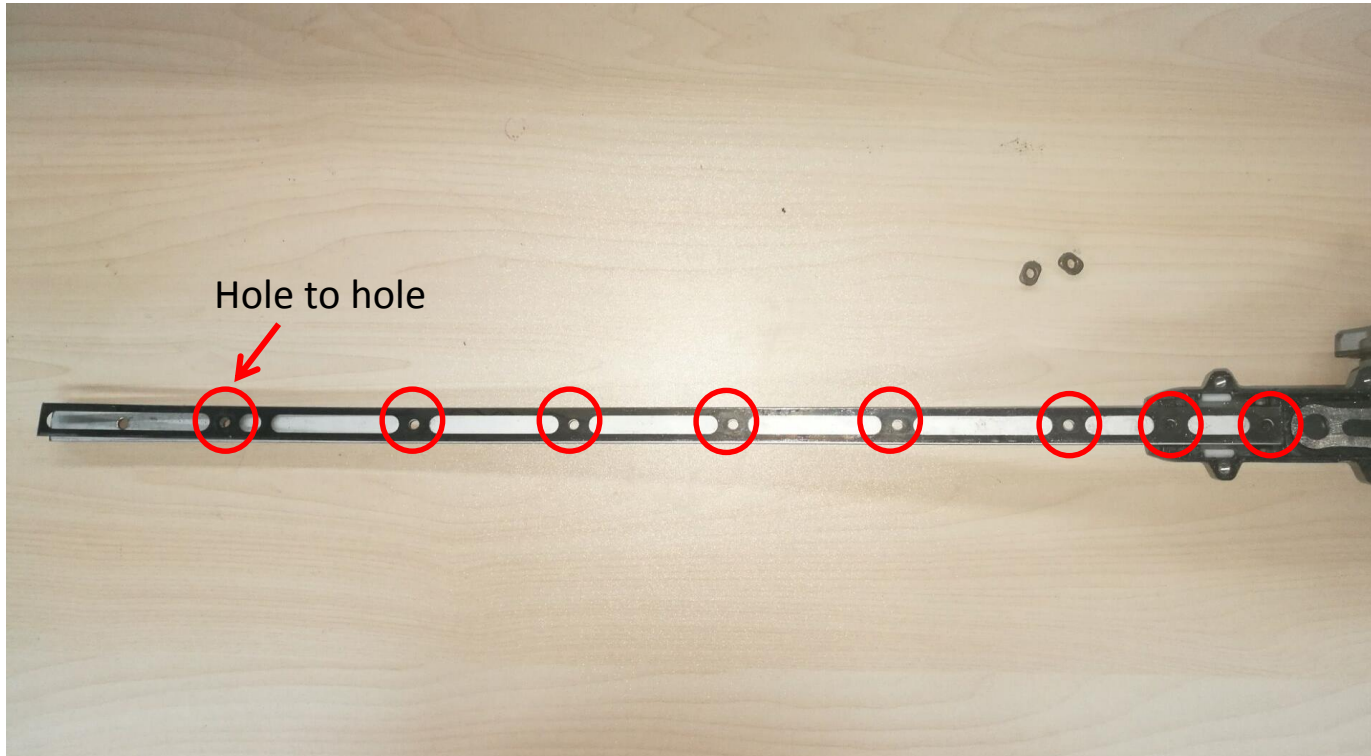
Replace the Blade and Gear

15. Mount the clamp support onto the groove of the right gear case assembly.



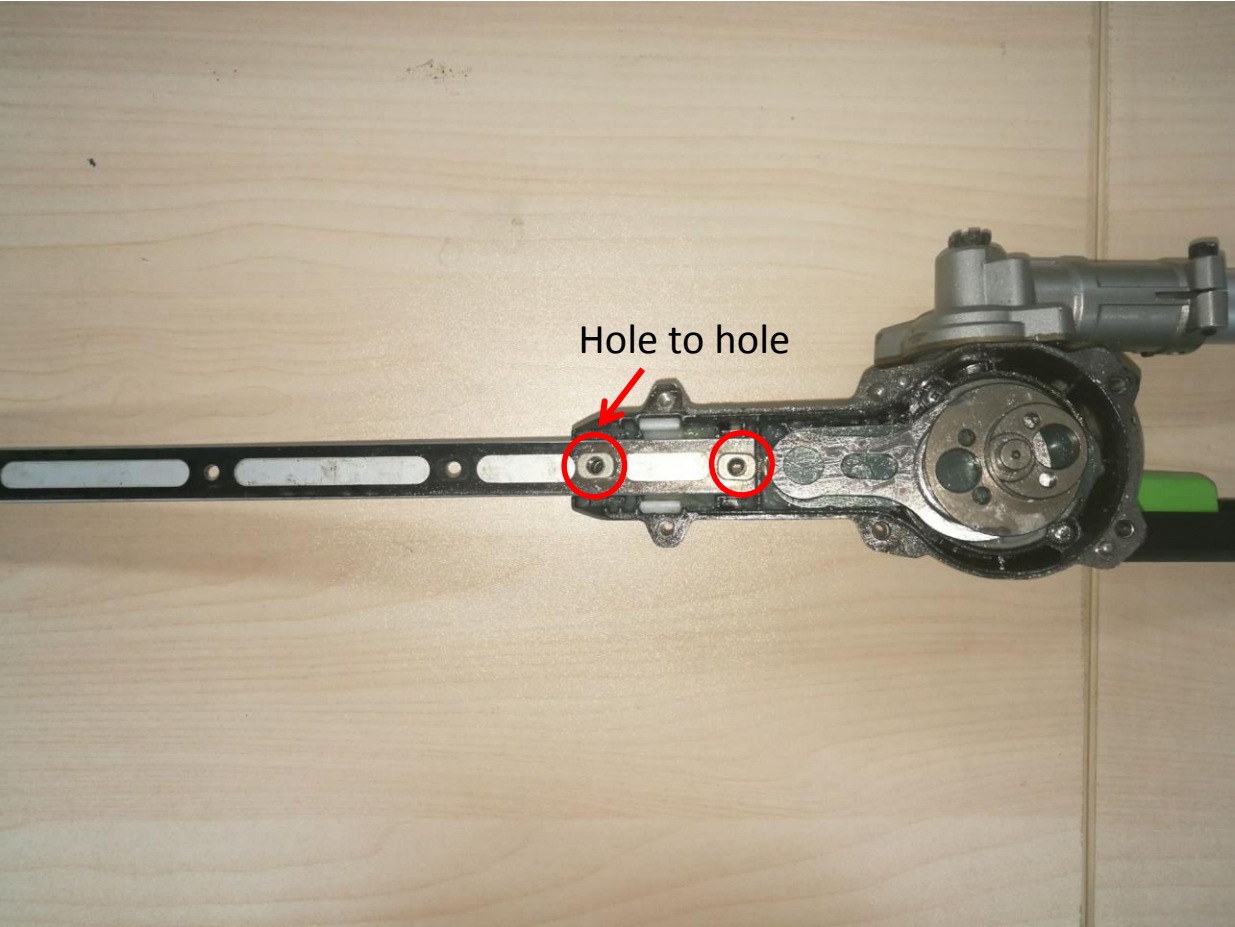
Replace the Blade and Gear

16. Put the support plate on the clamp support, hole to hole.



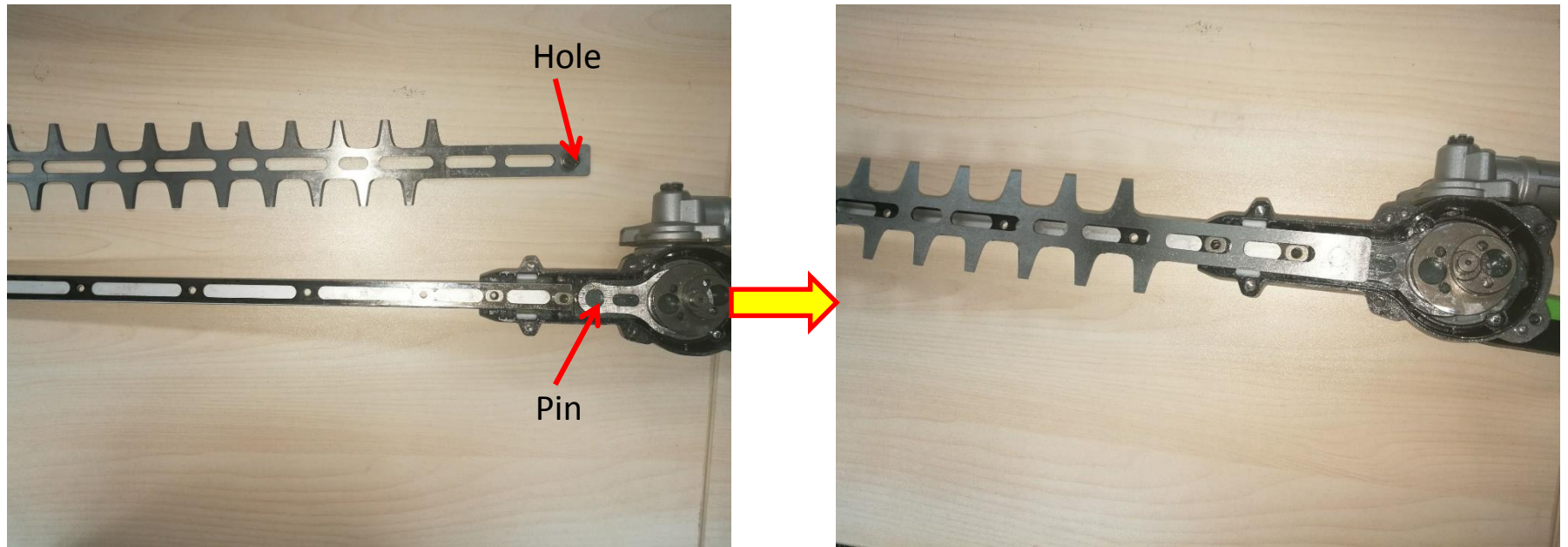
Replace the Blade and Gear

17. Put the 2 bushes on the support plate, hole to hole.



Replace the Blade and Gear

18. Align the pin on the bevel gear assembly with the hole on the blade to put the blade on the support plate.



Replace the Blade and Gear

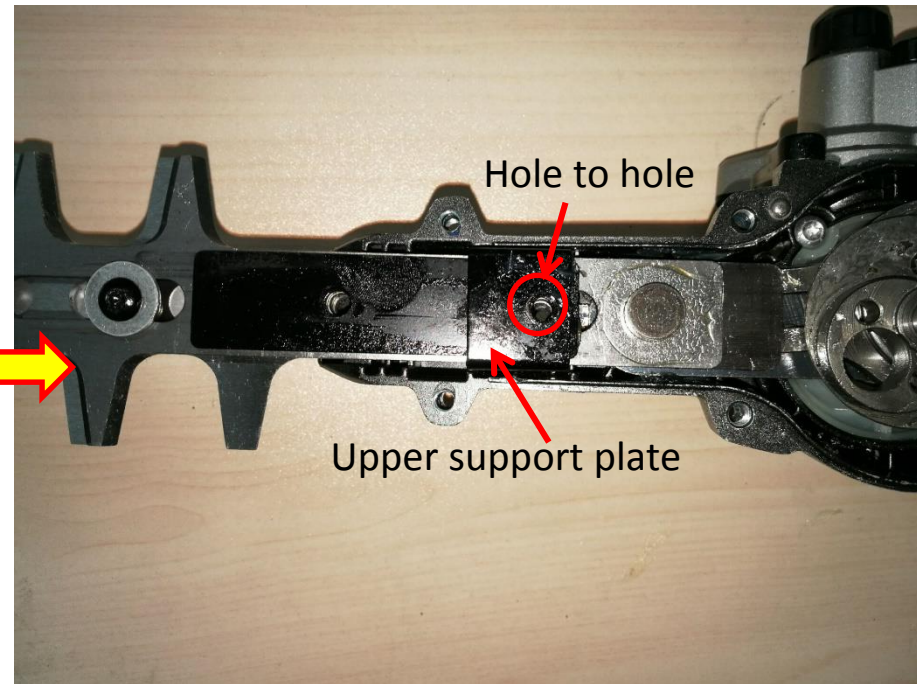
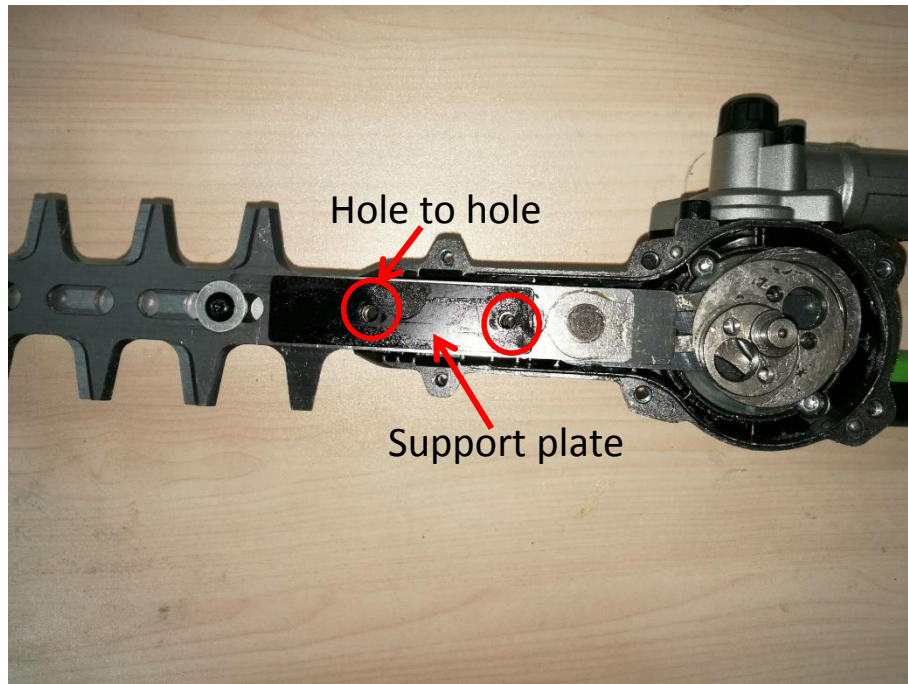
19. Put the second blade on top of the other.



Replace the Blade and Gear

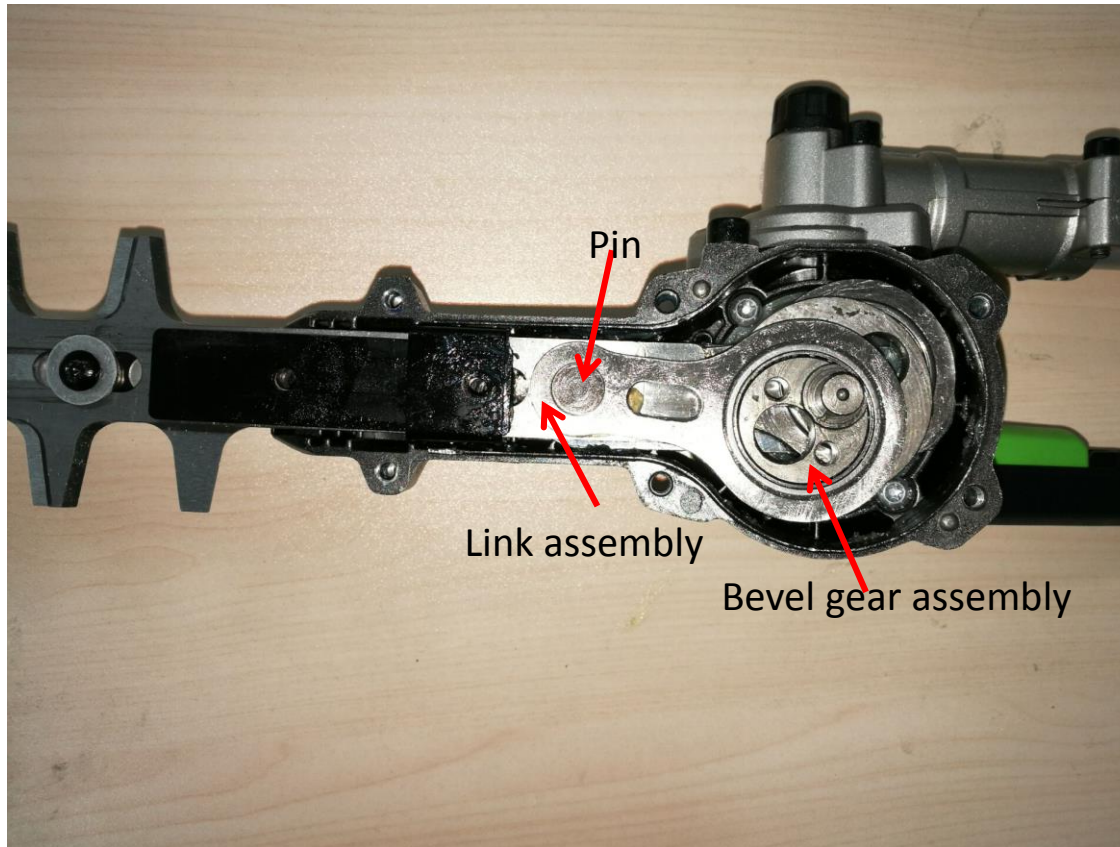
20. Put the support plate on the blade, hole to hole.

21. Put the upper support plate on the support plate, hole to hole.



Replace the Blade and Gear

22. Assemble the link assembly with the bevel gear assembly and then rotate the bevel gear assembly accordingly to align the hole on the link assembly with the pin on the blade to assemble them together.



Replace the Blade and Gear

23. Tighten the screw to assemble the support plates with the right housing assembly.



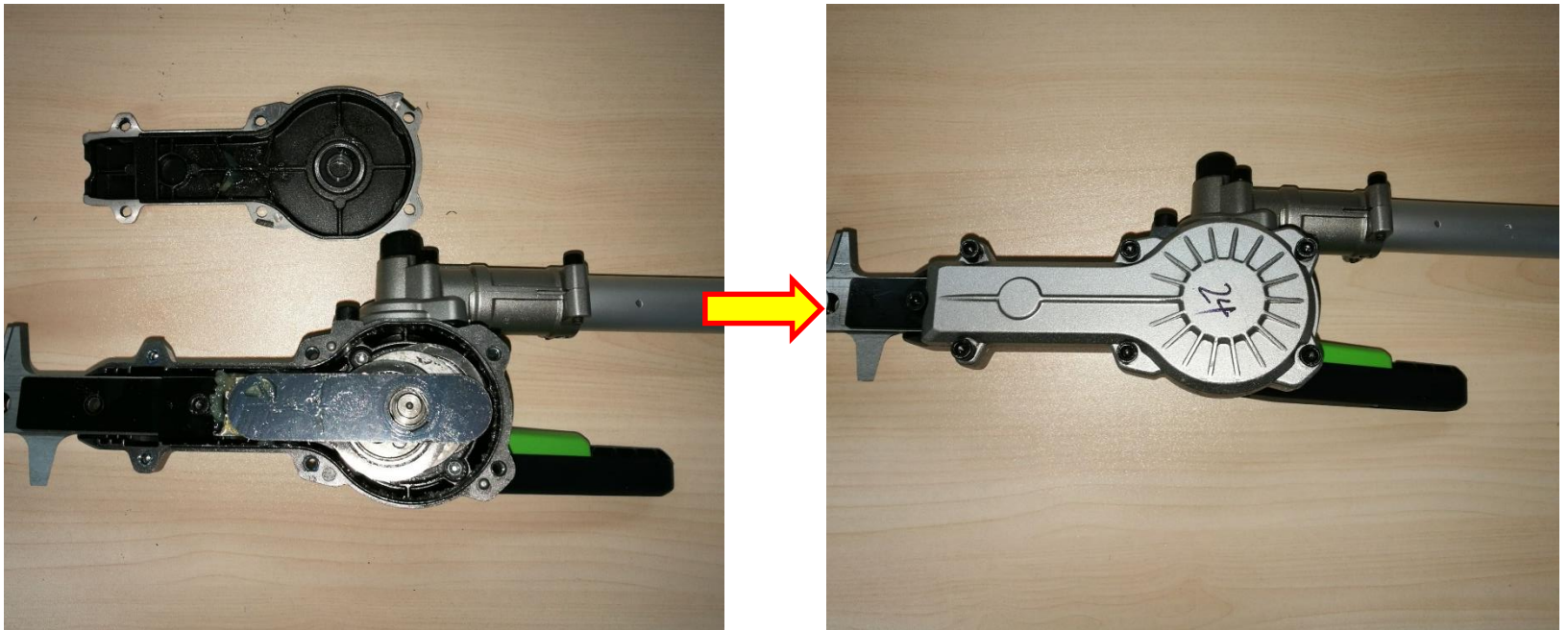
Replace the Blade and Gear

24. Mount the support plate onto the shaft.



Replace the Blade and Gear

25. Mount the lower housing assembly on the right gear case assembly and tighten them with screws.



Replace the Blade and Gear

26. Assemble the blade set with screws.

