

REPAIR GUIDELINE

Brush Cutter Attachment_BCA1200



Version: 1

Issue Date: 12/02/2016

Table of Contents

NO.	Contents	Page
1	Troubleshooting	3
2	Tool list	4
3	Part 1: Replace the Blade and Gear Case	5-29

Troubleshooting

Problem	Possible Cause	Fault Position	Test & Solution
Blade worn	Overload or wear and tear	Blade	Replace it with a new one
Noise	Lack of grease in gearbox	Gear case	Add grease
Excessive vibration	Unbalanced/ Eccentric blade	Blade	Replace or fit blade correctly.

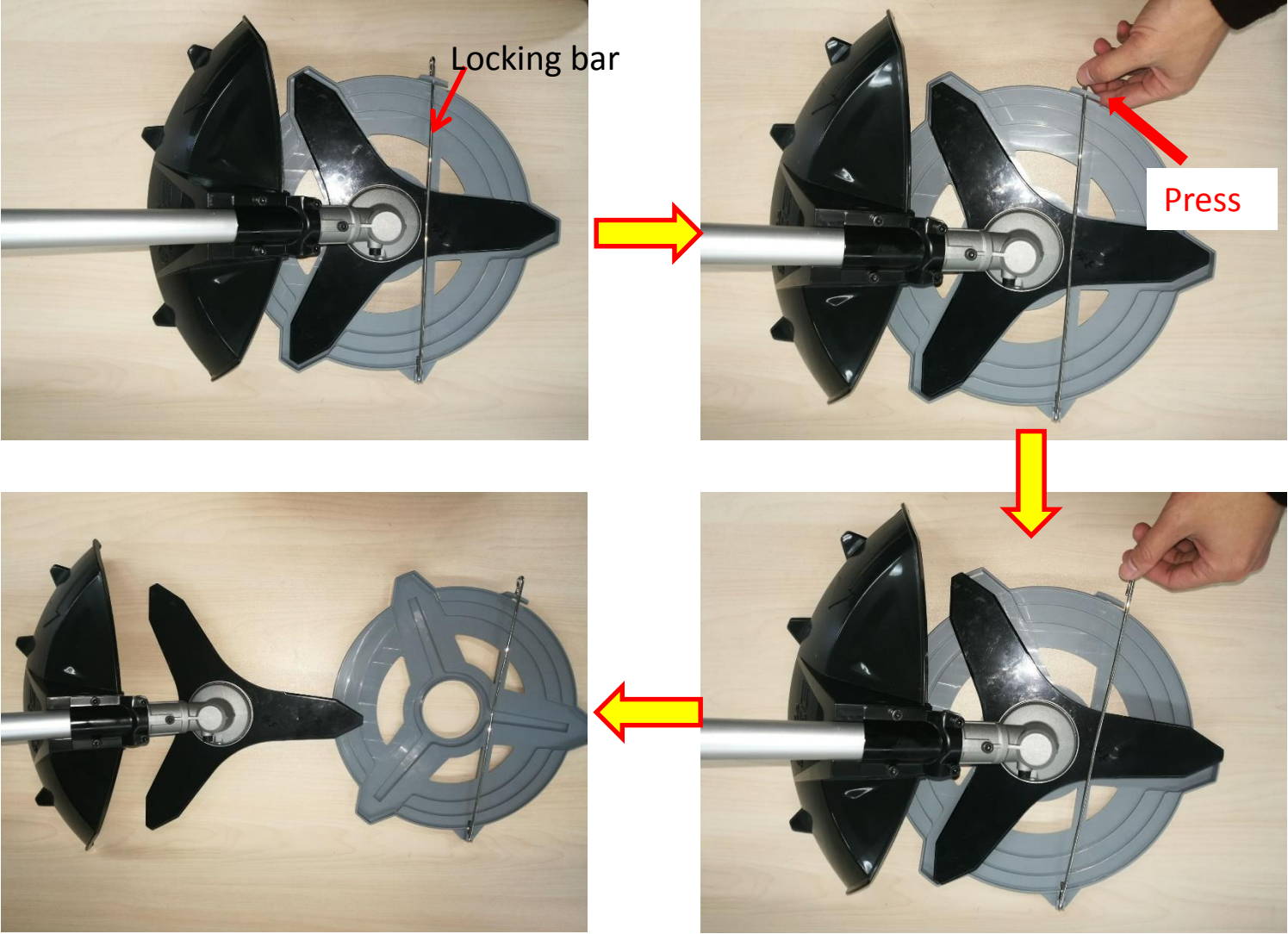
Tool List For Repair

NO.	Tool List	SPEC	Remark
1	Socket wrench	14mm	
2	Hex wrench	4mm	

Part 1: Replace the Blade and Gear Case

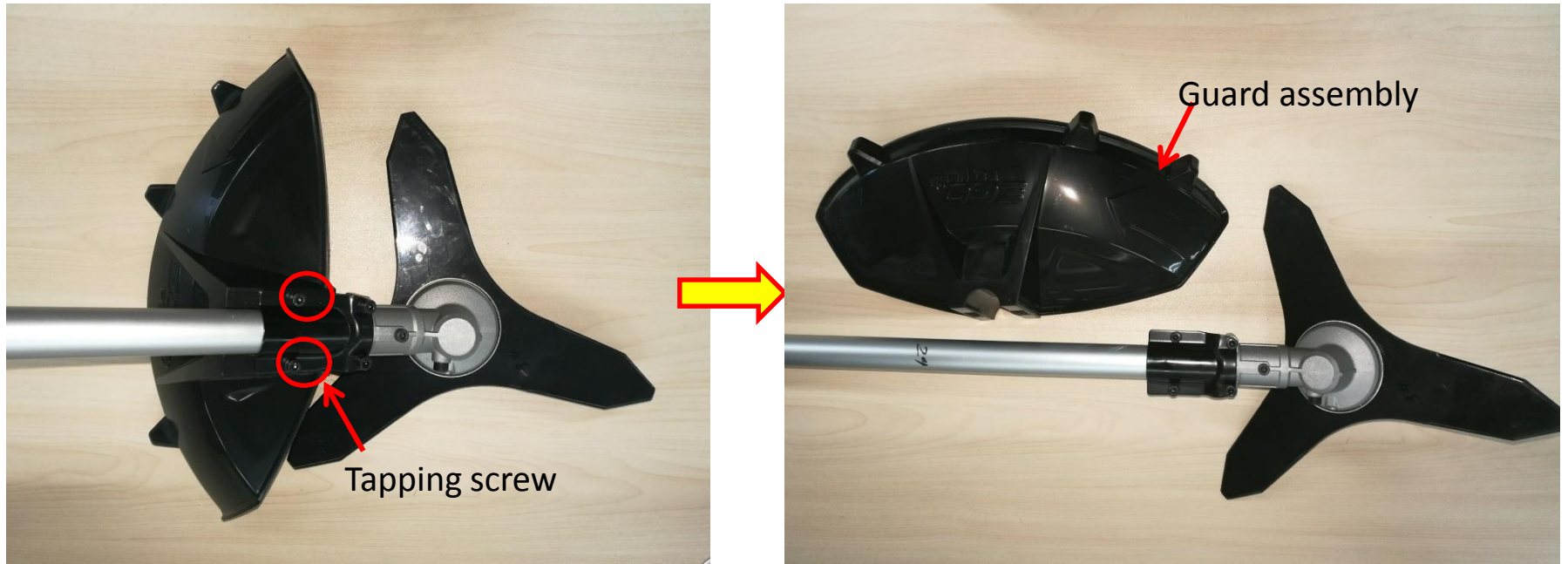
Replace the Blade and Gear Case

1. Press the locking bar to remove the blade cover.



Replace the Blade and Gear Case

- Loosen 2 screws to disassemble the guard assembly, if the guard assembly is broken, replace it with a new one.



Description	Part Number	Qty.
Tapping screw	5620216003	1
Guard assembly	2824703001	1

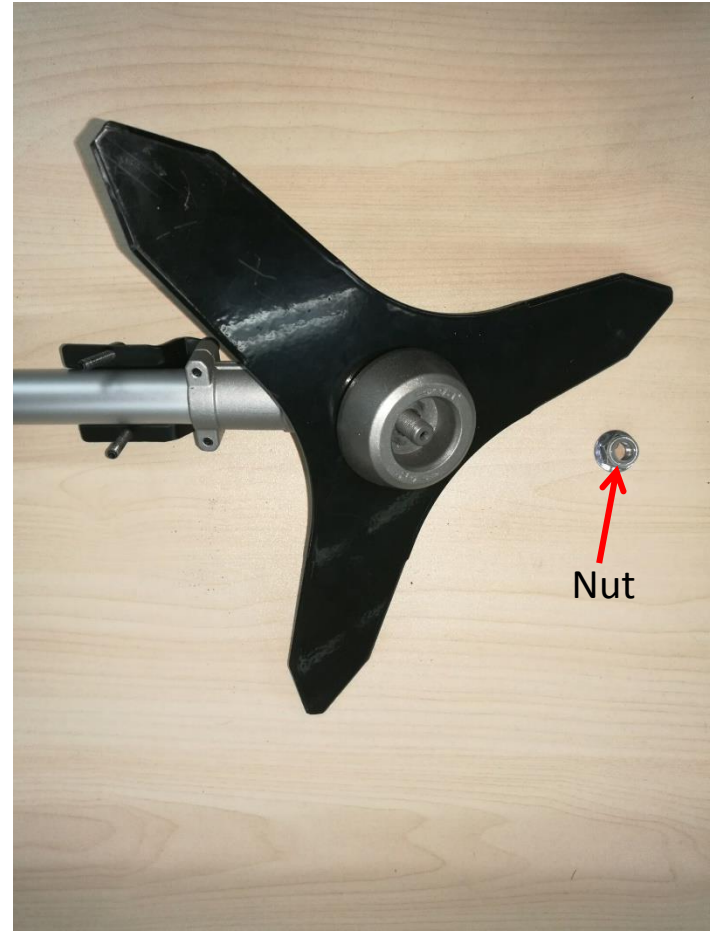
Replace the Blade and Gear Case

3. Rotate the blade to align the slot in the flange with the hole in the gear case.
4. Insert the hex wrench into the aligned holes to act as a stabilizer.



Replace the Blade and Gear Case

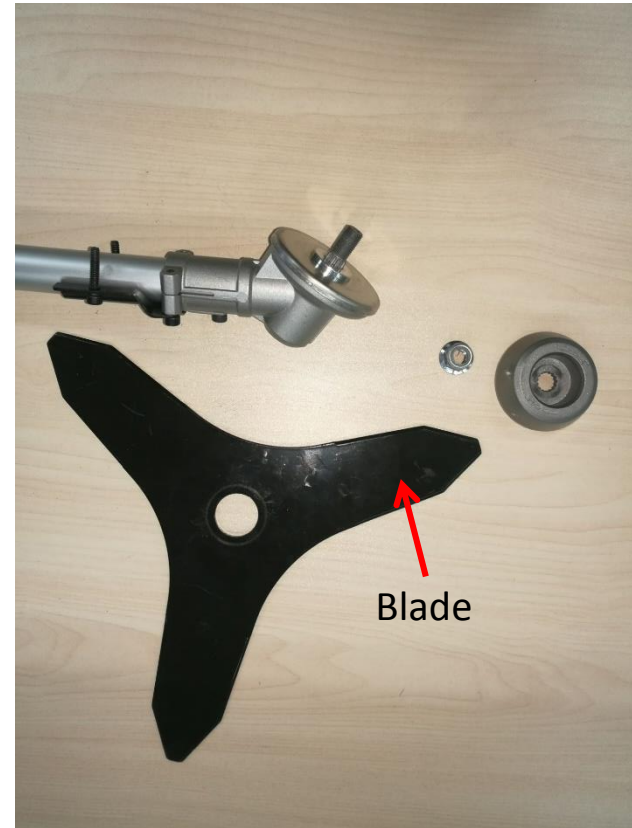
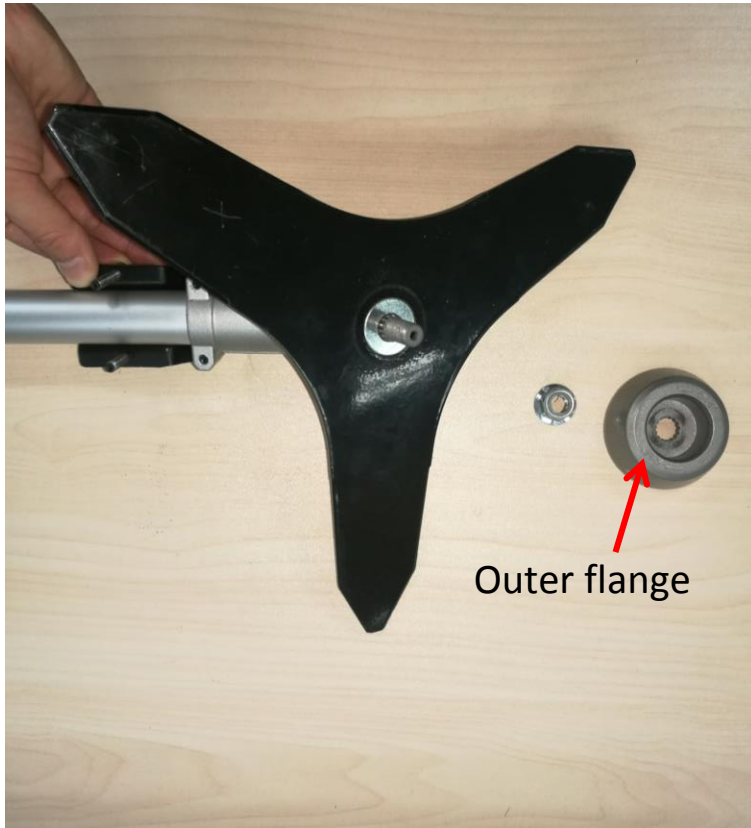
5. Loosen the nut with multifunction wrench clockwise to remove the nut from the shaft.



Description	Part Number	Qty.
Nut	5630292001	1

Replace the Blade and Gear Case

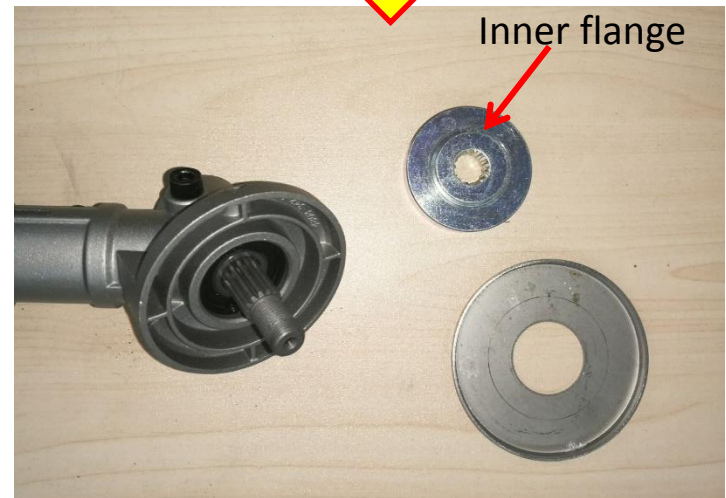
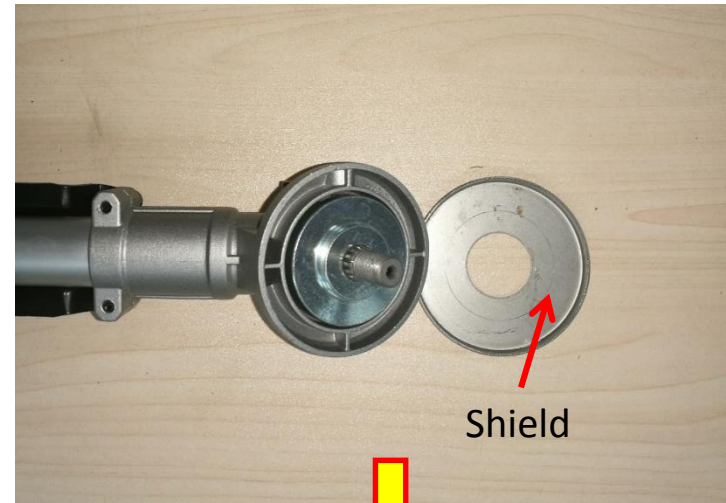
6. Take the outer flange out of the shaft.
7. Take the blade out of the shaft.



Description	Part Number	Qty.
Outer flange	3421864001	1
Blade	3706105001	1

Replace the Blade and Gear Case

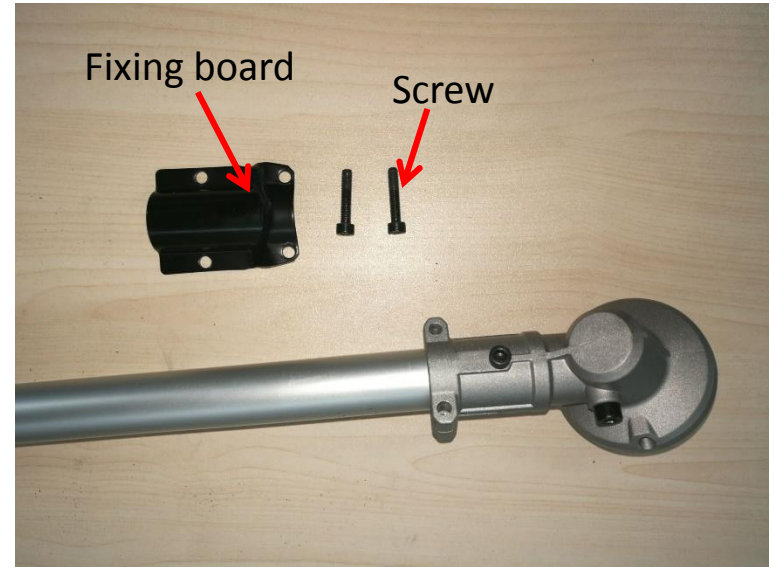
8. Take the shield out of the shaft.
9. Take the inner flange out of the shaft.



Description	Part Number	Qty.
Shield	3706103001	1
Inner flange	3552509001	1

Replace the Blade and Gear Case

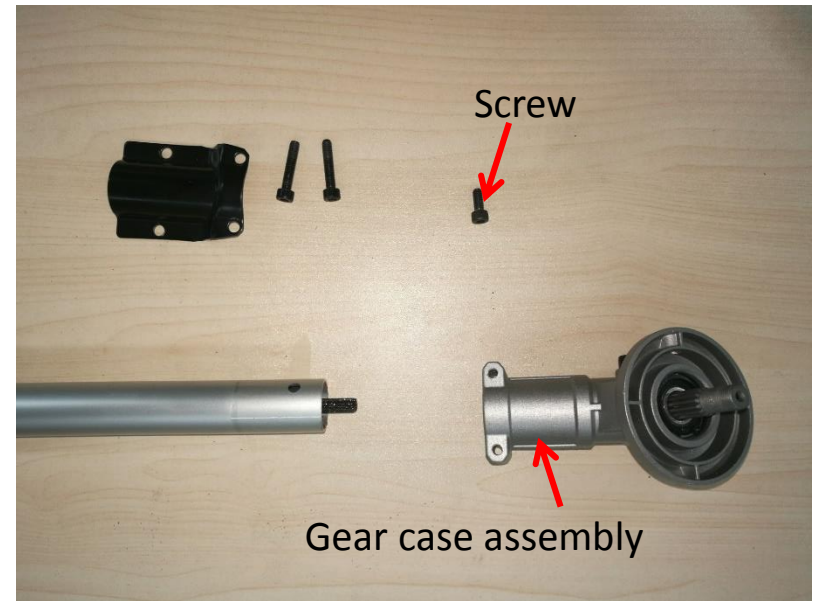
10. Loosen 2 screws to remove the fixing board.



Description	Part Number	Qty.
Screw	5620216003	1
Fixing board	3705417001	1

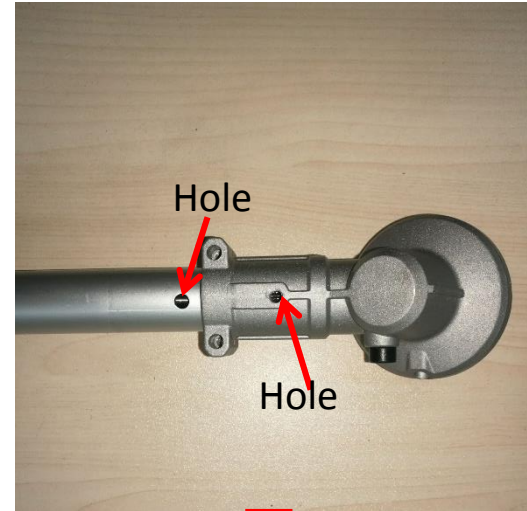
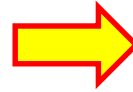
Replace the Blade and Gear Case

11. Loosen the screw to separate the gear case assembly from the connecting tube.
12. If any part was broken or worn, replace it with a new one.



Replace the Blade and Gear Case

13. Align the hole on the connecting tube with the hole on the gear case and then tighten them together with the screw.



Replace the Blade and Gear Case

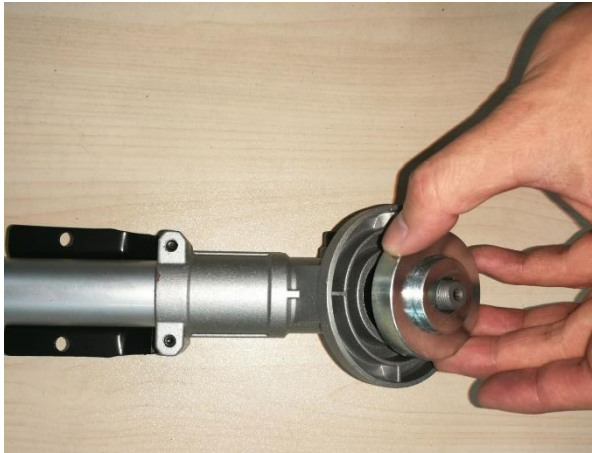
14. Mount the fixing board onto the connecting tube and assemble them with screws.



Replace the Blade and Gear Case

15. Mount the inner flange onto the shaft.

16. Mount the shield onto the shaft.



Replace the Blade and Gear Case

17. Mount the blade onto the shaft.
18. Mount the outer flange onto the shaft.
19. Mount the nut onto the shaft and pre-tighten it anticlockwise.



Replace the Blade and Gear Case

20. Rotate the blade to align the slot in the flange with the hole in the gear case.
21. Insert the hex wrench into the aligned holes to act as a stabilizer.
22. Tighten the nut anticlockwise with multi-function wrench.



Replace the Blade and Gear Case

23. Align the holes on the fixing board with the holes on the connecting tube to assemble them with screws.



Replace the Blade and Gear Case

24. Mount the blade onto the blade cover and press the locking bar to assemble them.

