

REPAIR GUIDELINE

String Trimmer Attachment_EA0800



Version: 1

Issue Date: 12/02/2016

Table of Contents

NO.	Contents	Page
1	Troubleshooting	3
2	Tool list	4
3	Part 1: Replace the blade	5-15
4	Part 2: Replace the guide plate and the anti-wear protective guard	16-20
5	Part 3: Replace the wheel assembly	21-29

Troubleshooting

Problem	Possible Cause	Fault Position	Test & Solution
Noise	No oil	Gear case	Add oil
Doesn't work	Gear worn	Gear case	Replace the gear case with a new one

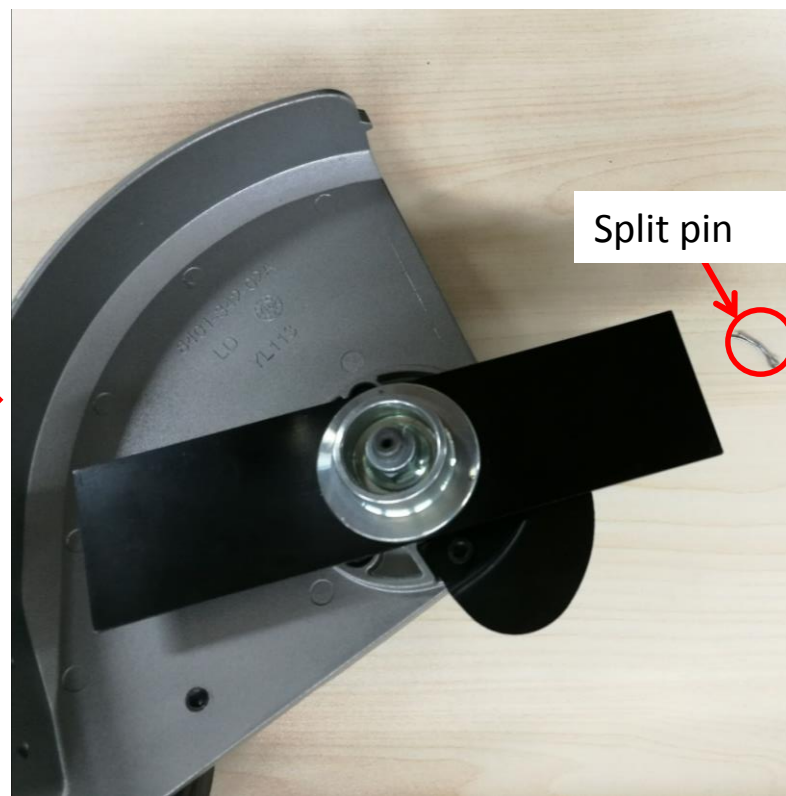
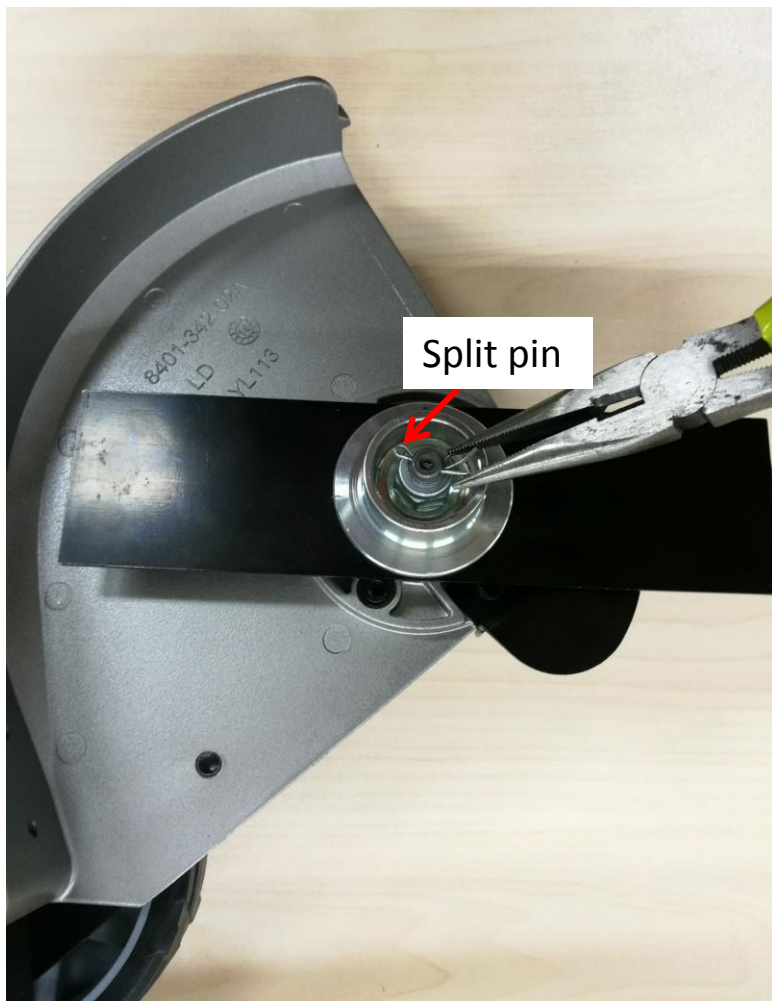
Tool List For Repair

NO.	Tool List	SPEC	Remark
1	Needle-nose pliers		
2	Hex wrench		
3	Multi-function wrench	14mm	

Part 1: Replace the blade

Replace the blade

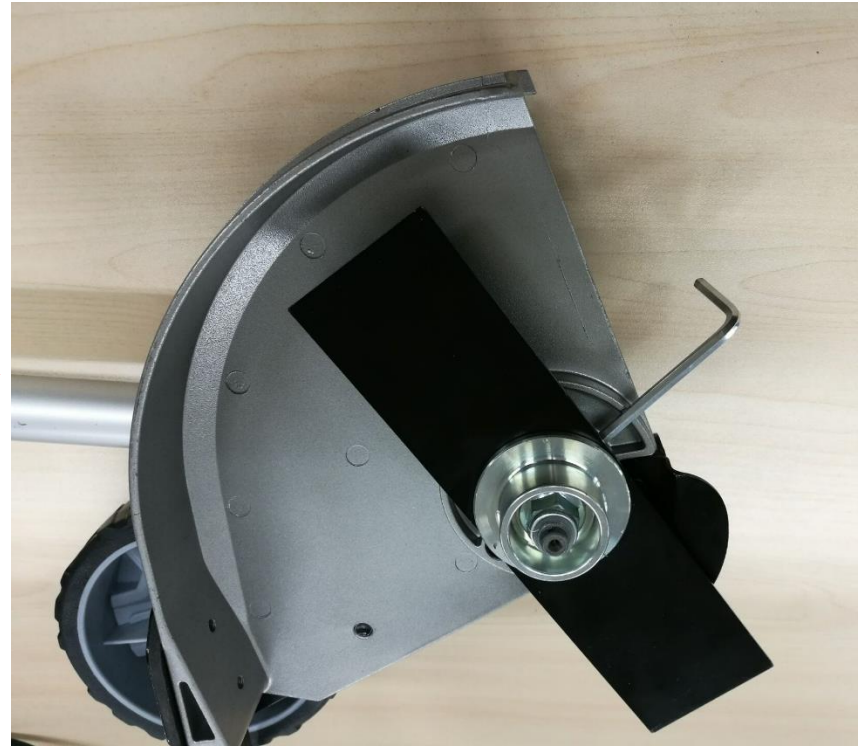
1. Remove the split pin from the shaft with needle-nose pliers.



Description	Part Number	Qty.
Split pin	5670436001	1

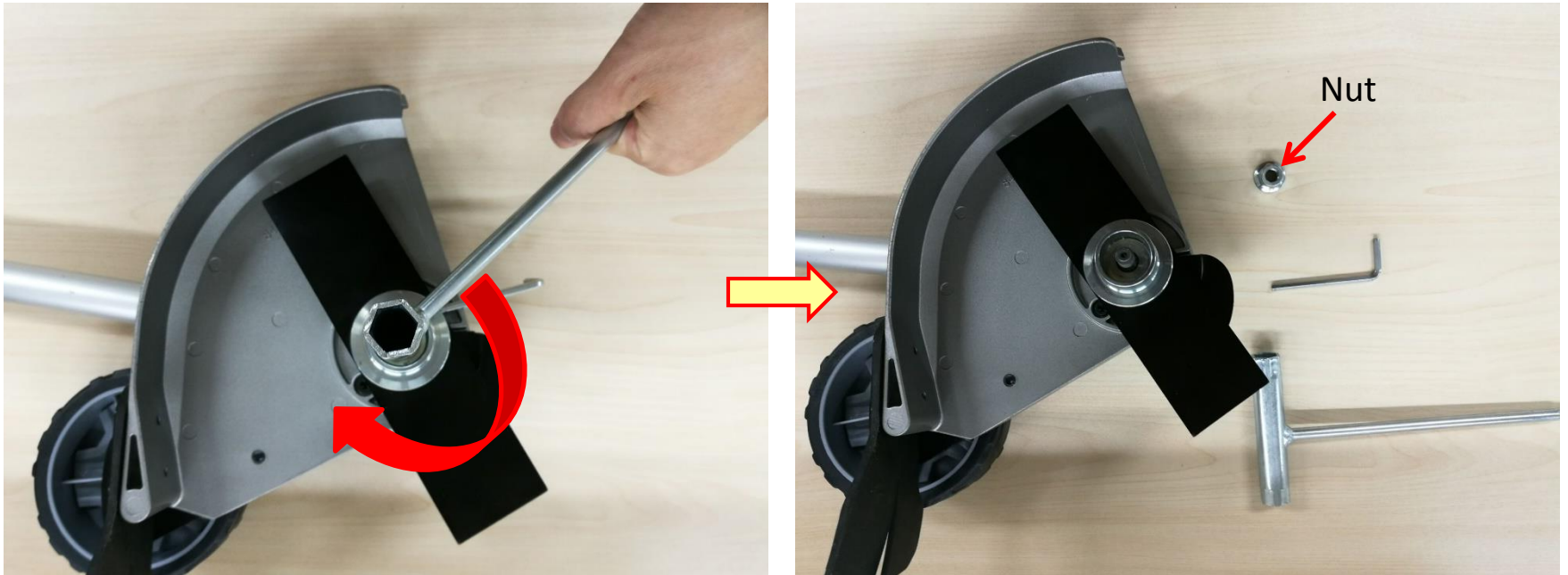
Replace the blade

2. Rotate the blade to align the slot in the flange with the hole in the gear case.
3. Insert the hex wrench into the aligned holes to act as a stabilizer.



Replace the blade

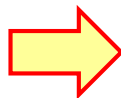
4. Loosen the nut clockwise with the multifunction wrench to remove it.



Description	Part Number	Qty.
Nut	5630292001	1

Replace the blade

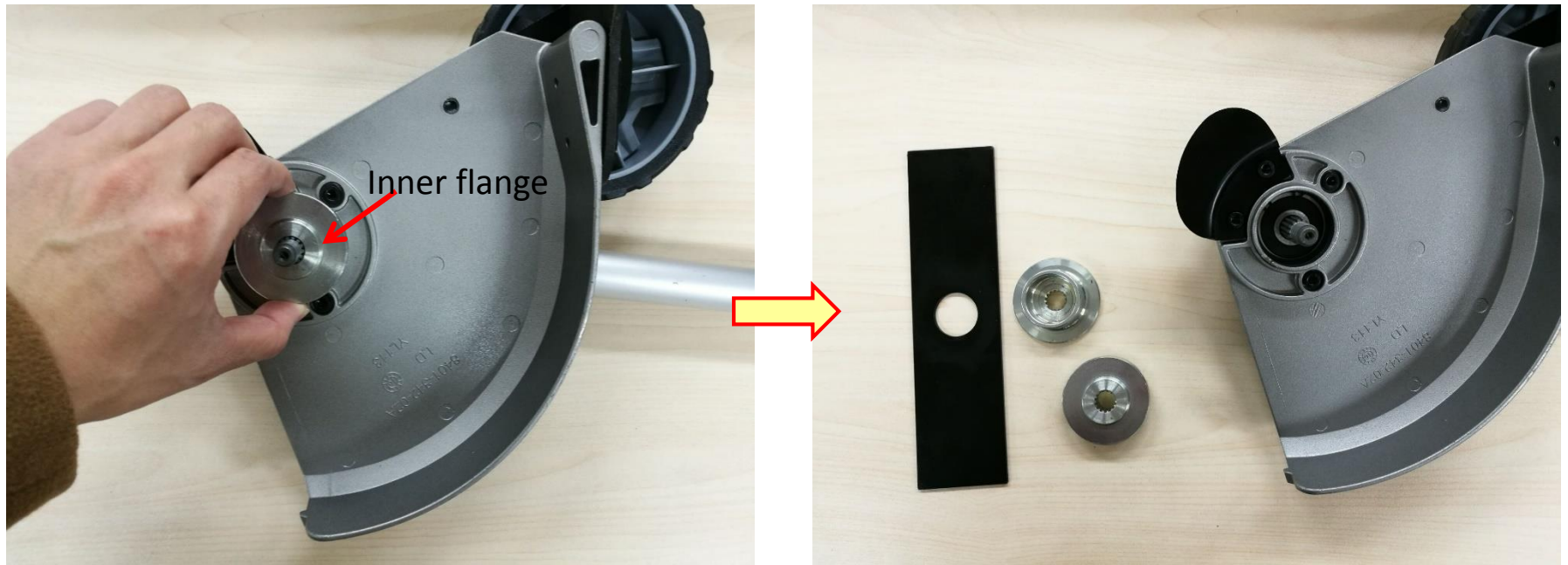
5. Take the outer flange out of the shaft.
6. Take the blade out of the shaft.



Description	Part Number	Qty.
Outer flange	3552523001	1
Blade	3705431001	1

Replace the blade

7. Take the inner flange out of the shaft.



Description	Part Number	Qty.
Inner flange	3552522001	1

Replace the blade

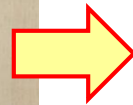
8. If any part is broken or worn replace it with a new one.
9. Mount the inner flange onto the shaft.



Replace the blade

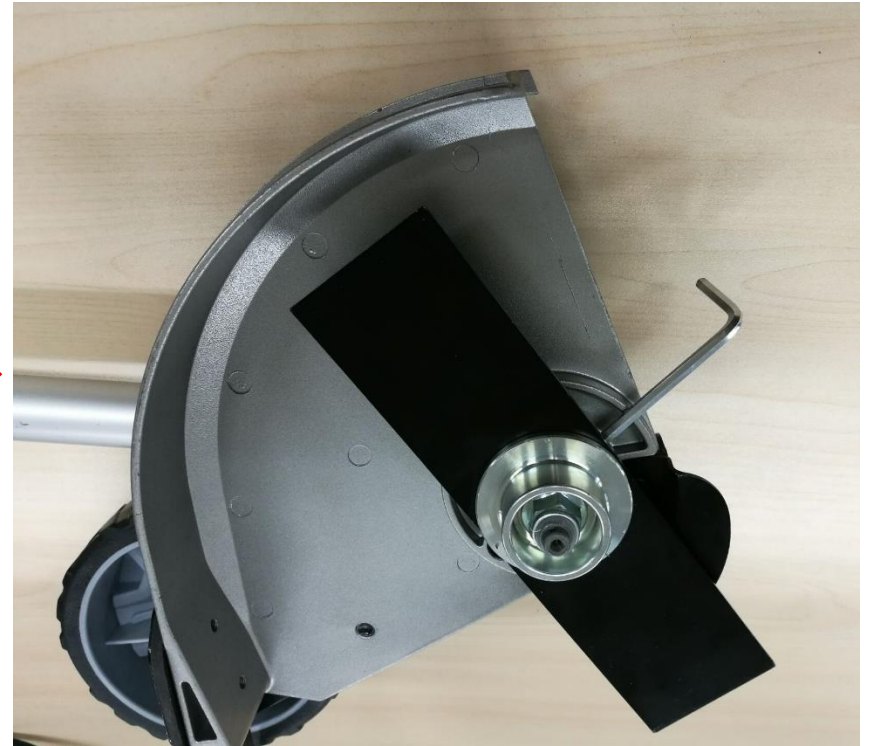
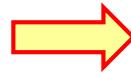
10. Mount the blade onto the shaft.

11. Mount the nut onto the shaft and pre-tighten it anticlockwise.



Replace the blade

12. Rotate the blade to align the slot in the flange with the hole in the gear case.
13. Insert the hex wrench into the aligned holes to act as a stabilizer.



Replace the blade

14. Rotate the nut anticlockwise with multifunction wrench to tighten it.



Replace the blade

15. Insert a new split pin into the hole of the shaft.
16. Bend the two feet of the pin in opposite direction with long nose pliers.



Part 2: Replace the guide plate and the anti-wear protective guard

Replace the guide plate and the anti-wear protective guard

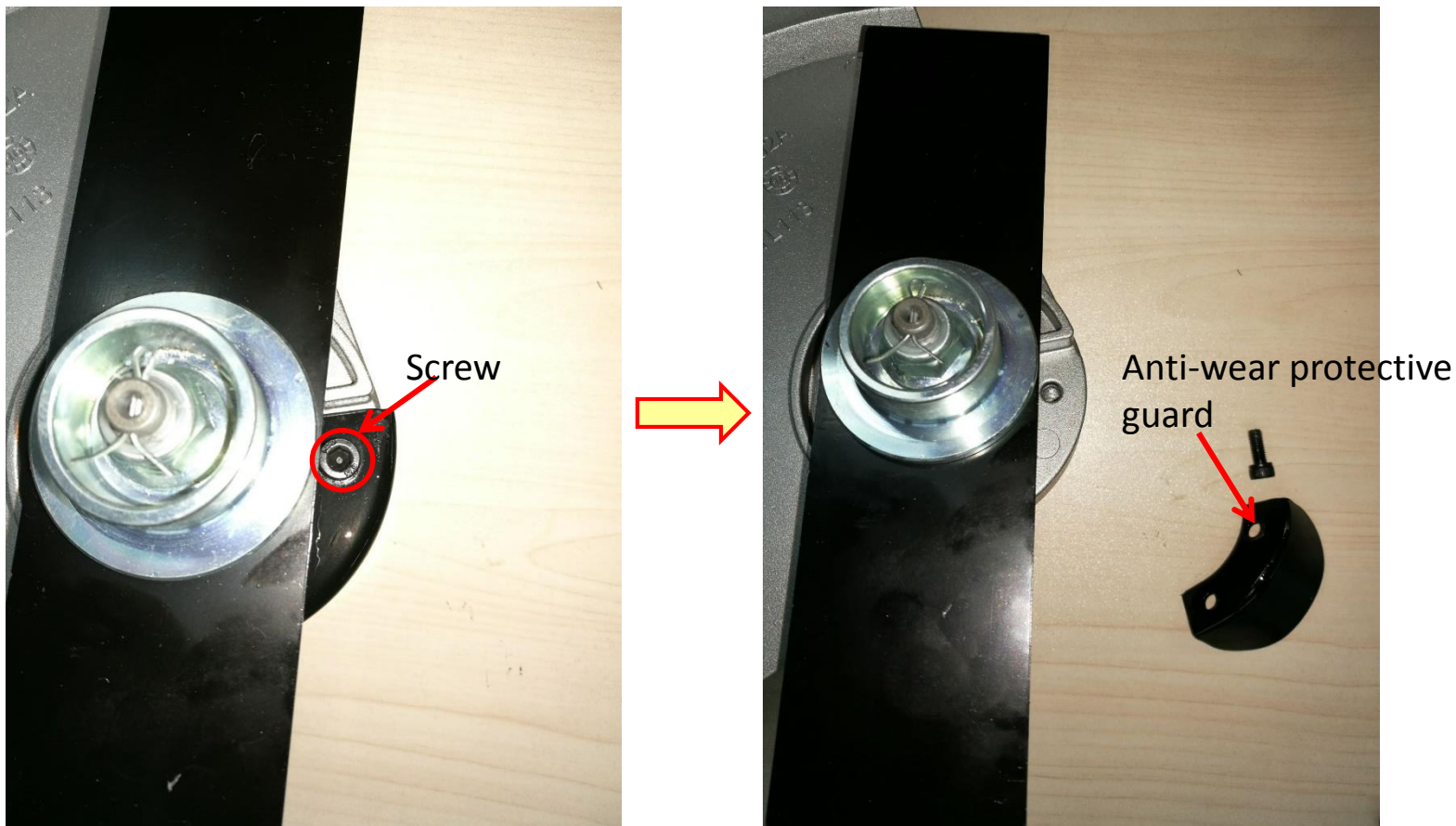
1. Loosen the screw on the guide plate to remove it.



Description	Part Number	Qty.
Screw	5620018002	1
Guide plate	3705433001	1

Replace the guide plate and the anti-wear protective guard

2. Loosen the screw on the anti-wear protective guard to remove it.



Description	Part Number	Qty.
Screw	5620018002	1
Anti-wear protective guard	3705450001	1

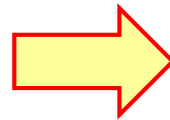
Replace the guide plate and the anti-wear protective guard

3. If the guide plate or anti-wear protective guard is broken, replace it with a new one.
4. Assemble the anti-wear protective guard with the shield with screw.



Replace the guide plate and the anti-wear protective guard

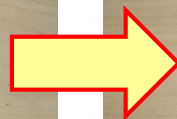
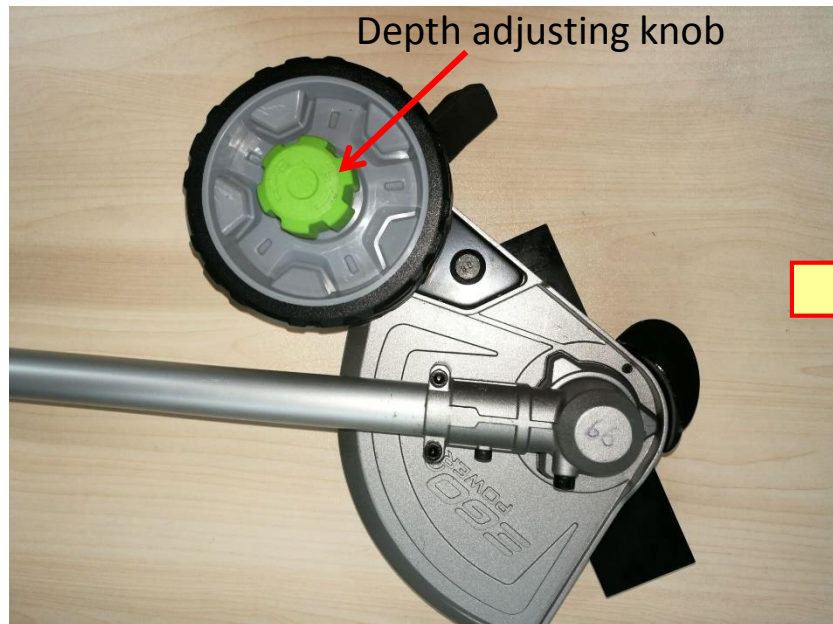
5. Assemble the guide plate with the anti-wear protective guard with screw.



Part 3: Replace the wheel assembly

Replace the wheel assembly

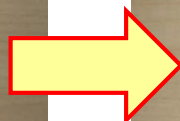
1. Loosen the depth adjusting knob in the direction of the unlocking arrow marked on the knob and remove it.



Description	Part Number	Qty.
Depth adjusting knob	3402815001	1

Replace the wheel assembly

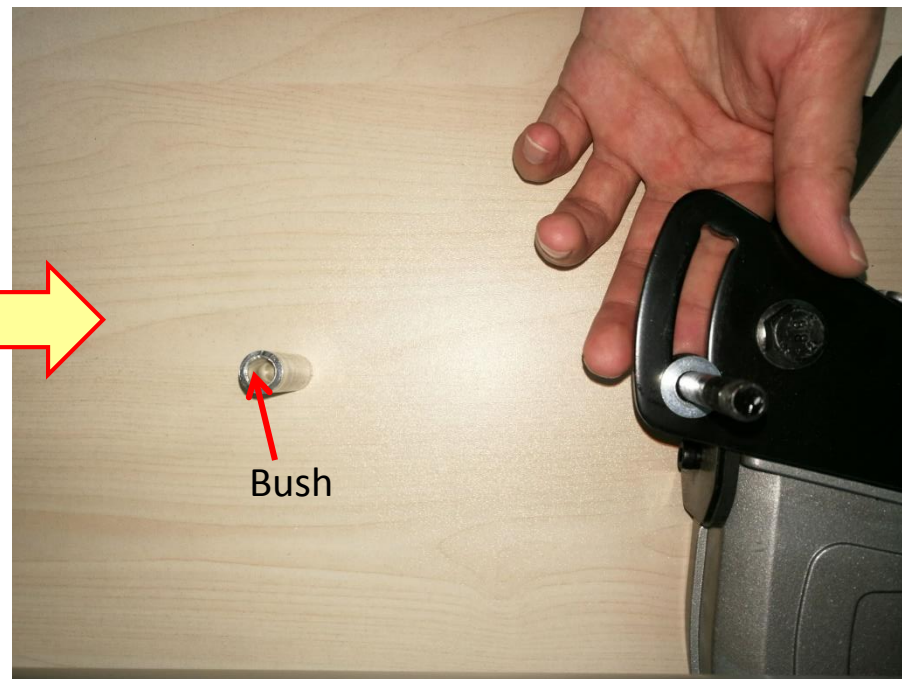
2. Take the spring washer and plain washer 1 out of the shaft in sequence.



Description	Part Number	Qty.
Spring washer	5650026005	1
Plain washer 1	5650025001	1

Replace the wheel assembly

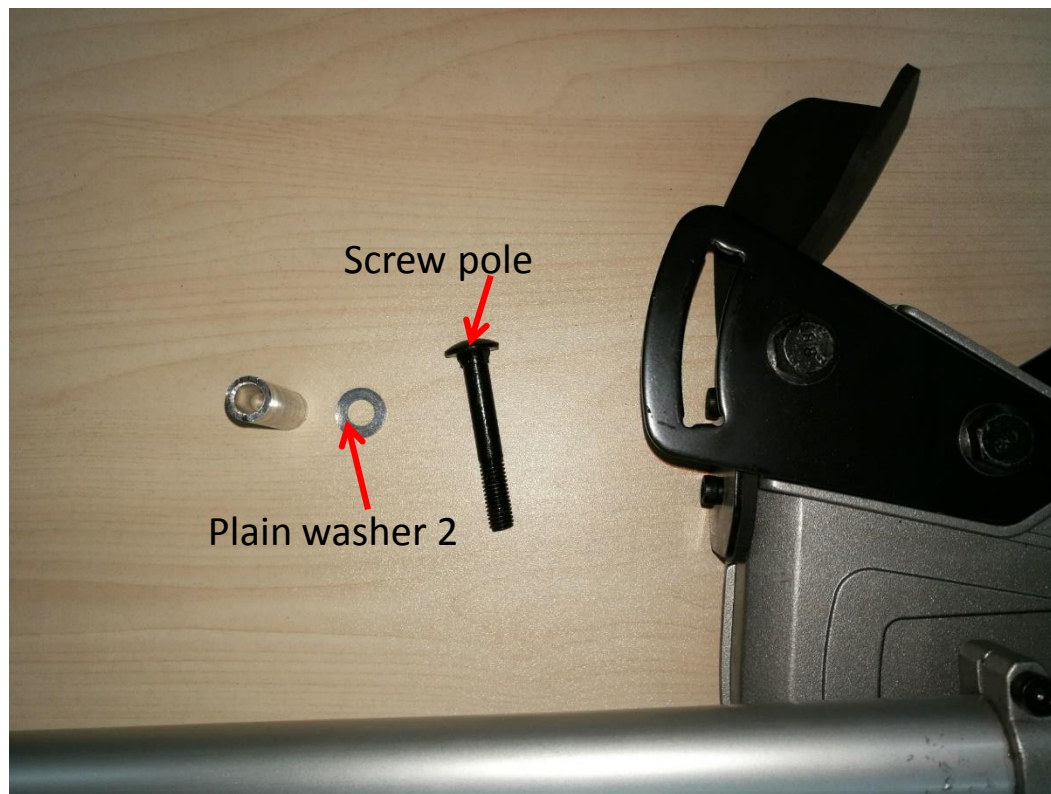
3. Take the guide wheel out the screw pole.
4. Take the bush out of the screw pole.



Description	Part Number	Qty.
Guide wheel	2824793001	1
Bush	3552519001	1

Replace the wheel assembly

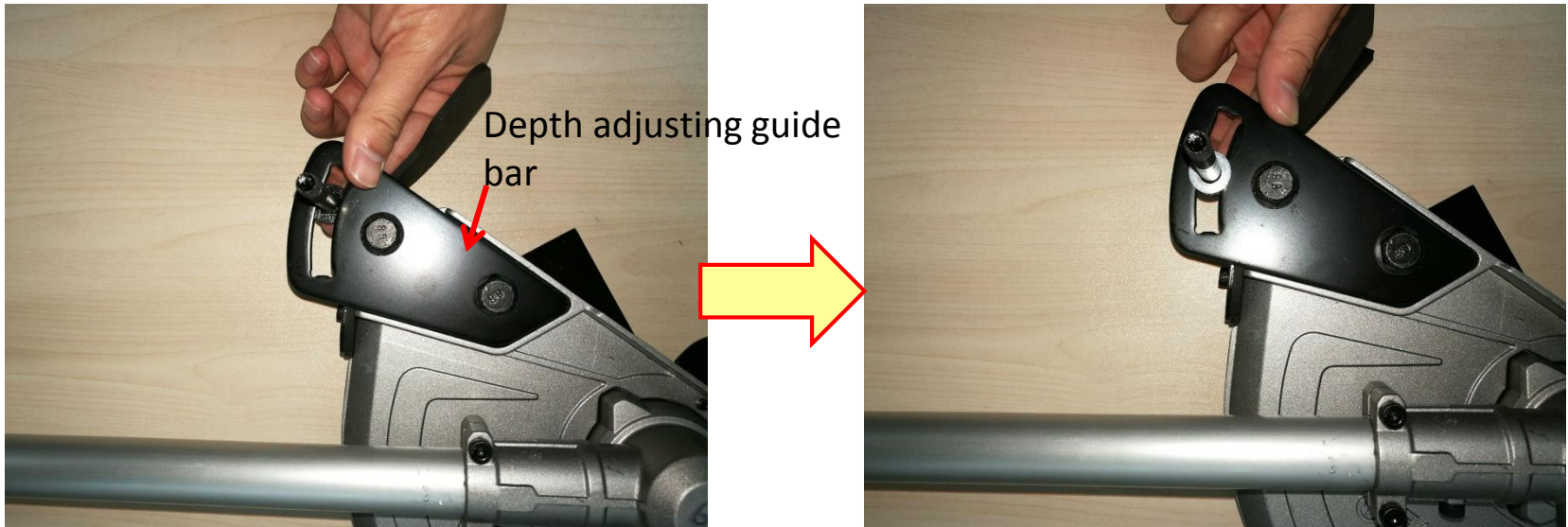
5. Remove plain washer 2 and screw pole.



Description	Part Number	Qty.
Plain washer 2	5650025001	1
Screw pole	5640245001	1

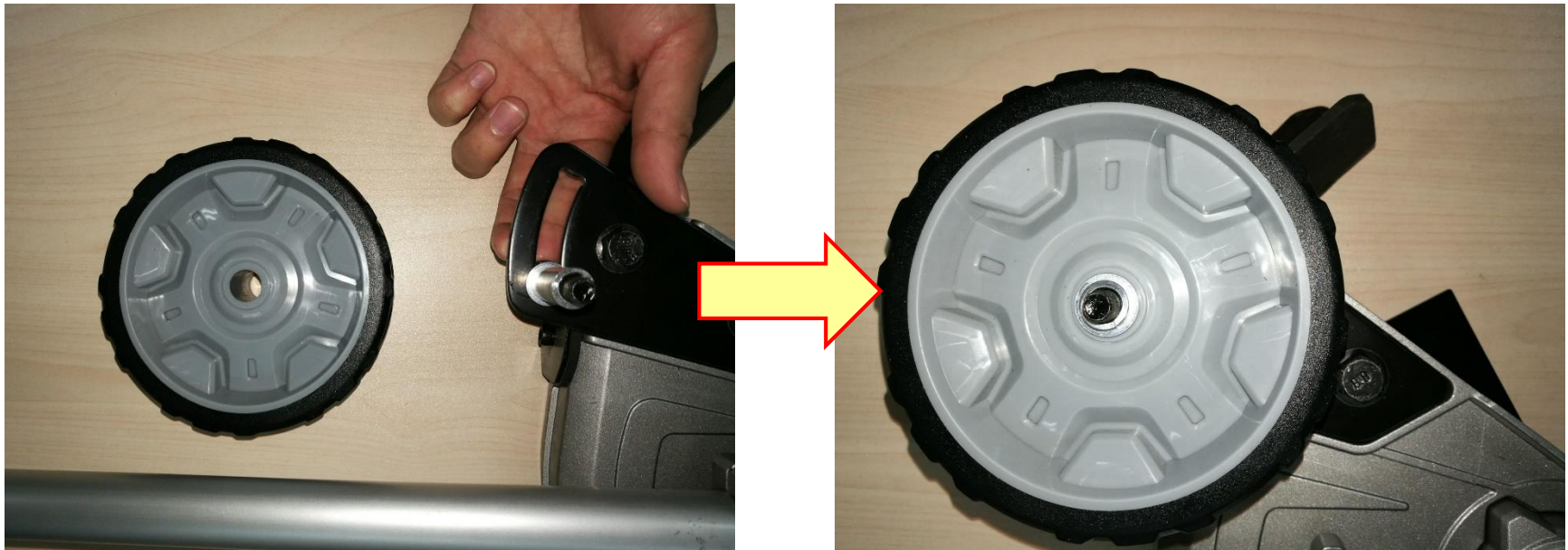
Replace the wheel assembly

6. If any part is broken, replace it with a new one.
7. Insert the screw pole into the hole of the depth-adjusting guide bar.
8. Mount the plain washer 2 onto the screw pole.



Replace the wheel assembly

9. Mount the bush onto the pole screw.
10. Mount the guide wheel onto the pole screw.



Replace the wheel assembly

11. Mount plain washer 2 and spring washer onto the pole screw in sequence.



Replace the wheel assembly

12. Mount the depth adjusting knob onto the screw pole and tighten it in the direction of the locking arrow marked on the knob.

