

OCR10-M41401EN

P R E F A C E

1. This Parts Catalog carries all parts incorporated in YANMAR Model 2T75HLE, 2T75HLE-S, 2T75HLEG1, 2T75HLEG1-S, 3T75HLE, 3T75HLE-S, 3T75HLEG1, & 3T75HLEG1-S engines manufactured since December, 1980.
2. Each illustration corresponds to the parts list on the following page.
3. When ordering parts, clearly write down the engine model and serial number, as well as the name and number of each part in your order sheet. This will help insure reliable delivery of the parts you have ordered.
4. Pub. No. 000Y00R0927 First Published : December, 1980.
Pub. No. 000Y00R4141 First Revised : August, 1992.

Directions for the Parts Catalog.

1. This Parts Catalog shows both standard and optional parts.
2. Parts may change without prior notice.
3. The following is an example of the Parts Catalog format.

REF.	LEV.	PARTS NO.	DESCRIPTION	Q'TY						I	R
				(A)	(B)	(C)	(D)	(E)	(F)		
1	1	729595-51390	FUEL INJECTION PUMP	1	1	1	1	1			1
1-1	1	729595-51391	FUEL INJECTION PUMP	1	1	1	1	1		N	1
		(A=E00185) (B=E00200)									
3	2	26022-060162	SCREW M 6X 16	9	9	9	9	9			
3-1	2	26022-060162	SCREW M 6X 16	4	4	4	4	4		K	
		(A=E00156) (B=E00156) (C=E00156) (D=E00156) (E=E00156)									
4	2	129470-51040	CAMSHAFT	1	1	1	1	1			
5	2	122710-51050	BEARING, ROLLER	2	2	2	2	2			
6	2	129470-51060	RETAINER	1	1	1	1	1			

Remarks
(1) BOOST COMPEMSATOR TYPE. OPTIONAL PART, TO E00155,(4JH-DT, 4JH-DTZ

① Ref. No.

The Ref. No. listed may not be in accordance with the illustration Ref. No.

(Ex.) Illustration No.

List Ref No.

1 1 (Before change) → 1-1 (After change)

For interchangeable symbols N, R and K, illustrations for new parts may be abbreviated.

② Lev. (Level)

Level indication

The numbers below indicate the level of relativity towards the main part.

1 ---- Main parts (Assembly parts)

2 ---- Sub component included in " 1 ".

3 ---- Sub component included in " 2 ".

Note) Parts that are not for sale are partially illustrated but not listed.

③ Interchangeability Symbol

When a part change takes place, one of the following interchangeability symbols is indicated beside the part.

Symbol	Interchangeability	Contents note
N	Old $\begin{matrix} \leftarrow \text{Yes} \\ \text{No} \rightarrow \end{matrix}$ New	New Part is interchangeable for Old Part but Old Part is not interchangeable for New Part.
Q	Old $\begin{matrix} \leftarrow \text{No} \\ \text{Yes} \rightarrow \end{matrix}$ New	New Part is not interchangeable for Old Part but Old Part is interchangeable for New Part.
R	Old $\begin{matrix} \leftarrow \text{Yes} \\ \text{Yes} \rightarrow \end{matrix}$ New	New/ Old Parts are both interchangeable.
S	Old $\begin{matrix} \leftarrow \text{No} \\ \text{No} \rightarrow \end{matrix}$ New	New/ Old Parts are both not interchangeable.
W		Part newly added.
Z		Part discontinued.
F		Not interchangeable by a single part but interchangeable together with related parts.
K		Changes only for used parts quantities.

④ Effective Machine No.

When a part changes, the effective Machine No. will be indicated in the (A)-(F) column.

Product Symbol	Product No.	Product Symbol	Product No.
C	Clutch No. Compressor No.	F	Machine No. (Agricultural Equip.)
D	Drive No.	M	Machine No.
E	Engine No.		

Note 1) A date may follow the symbol. (Ex.) 1996.01

Note 2) "XXXXX" and "ZZZZZ" are for parts that could not be predicted or for engine models that could not be identified.

Note 3) (A=E00185) is the E (Engine Serial Number) for the column (A) model (in this case 4JH-DT) after the parts design change.

⑤ Remarks

Figures or alphabets (symbols) are entered in the remarks column.

The comments (remarks) on parts that are indicated at the bottom of the illustration are the same symbols as those stated above.

Contents

OCR10-M41401

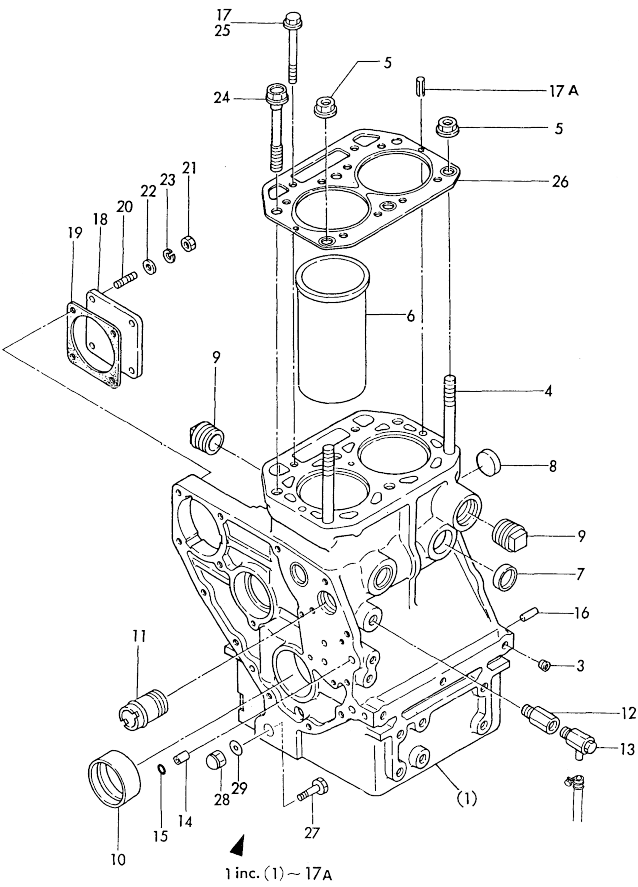
Fig. No.	Fig. Name
2T75HLE	
1.	CYLINDER BLOCK
2.	GEAR HOUSING
3.	MOUNTING FLANGE
4.	LUB. OIL SUMP
5.	MAIN BEARING HOUSING
6.	BONNET
7.	LABEL
8.	CYLINDER HEAD
9.	SUC.MANIFOLD & AIR CLEANER
10.	EXH.MANIFOLD & SILENCER
11.	CAMSHAFT
12.	CRANKSHAFT & PISTON
13.	LUB. OIL SYSTEM
14.	COOLING WATER PUMP
15.	COOLING WATER SYSTEM
16.	FUEL INJECTION PUMP
17.	FUEL SYSTEM
18.	GOVERNOR
19.	CONTROLLER DEVICE
20.	STARTING MOTOR
21.	GENERATOR
22.	INSTRUMENT PANEL
23.	GASKET SET(OPTIONAL) & TOOL

Fig. No.	Fig. Name
3T75HLE	
24.	CYLINDER BLOCK
25.	GEAR HOUSING
26.	MOUNTING FLANGE
27.	LUB. OIL SUMP
28.	MAIN BEARING HOUSING
29.	BONNET
30.	LABEL
31.	CYLINDER HEAD
32.	SUC.MANIFOLD & AIR CLEANER
33.	EXH.MANIFOLD & SILENCER
34.	CAMSHAFT
35.	CRANKSHAFT & PISTON
36.	LUB. OIL SYSTEM
37.	COOLING WATER PUMP
38.	COOLING WATER SYSTEM
39.	FUEL INJECTION PUMP
40.	FUEL SYSTEM
41.	GOVERNOR
42.	CONTROLLER DEVICE
43.	STARTING MOTOR
44.	GENERATOR
45.	INSTRUMENT PANEL
46.	GASKET SET(OPTIONAL) & TOOL

Fig.1. CYLINDER BLOCK

(A)=2T75HLE
(B)=2T75HLE-S
(C)=2T75HLEG1
(D)=2T75HLEG1-S
(E)=
(F)=

Fig. 1 CYLINDER BLOCK



No.	Lev.	Parts No.	Description	Q'ty						I	R
				(A)	(B)	(C)	(D)	(E)	(F)		
1	1	724500-01560	BLOCK ASSY, CYLINDER	1	1						
1-1	1	724500-01561	BLOCK ASSY, CYLINDER	1	1						N
		(A=E/# 98379) (B=E/# 97968)									
1-2	1	724500-01562	BLOCK ASSY, CYLINDER	1	1						R
		(A=E/# 98379) (B=E/# 97968)									
1-3	1	724500-01563	BLOCK ASSY, CYLINDER	1	1	1	1				N
		(A=E/# 98379) (B=E/# 97968)									
3	2	124060-01050	PLUG, PT1/8	6	6	6	6				
4	2	121450-01210	BOLT, HEAD	2	2	2	2				
5	2	121450-01220	NUT, CYLINDER HEAD	2	2	2	2				
6	2	121500-01100	LINER, CYLINDER	2	2	2	2				
7	2	27243-300000	PLUG, 30	4	4						
7-1	2	27241-300000	PLUG 30	4	4	4	4				N
		(A=E/XXX) (B=E/XXX)									
8	2	121450-01990	PLUG, 30	1	1	1	1				
9	2	121750-01920	PLUG, NPTF1	2	2						
9-1	2	171051-01921	PLUG, NPTF1	2	2	2	2				N
		(A=E/# 98379) (B=E/# 97968)									
10	2	121520-02100	BEARING, MAIN	1	1	1	1				
11	2	124160-49480	JOINT, PIPE	1	1	1	1				
12	2	124085-01880	CONNECTOR	1	1						Z
		(A=E/XXX) (B=E/XXX)									
13	2	43600-500290	COCK 1/4 COMP	1	1						
13-1	2	128370-01800	COCK ASSY, 1/4	1	1	1	1				N
14	2	105225-01900	GUIDE	2	2						
14-1	2	124085-01900	GUIDE	2	2	2	2				N
		(A=E/# 98379) (B=E/# 97968)									
15	2	24314-000100	O-RING, 4CP10.0	2	2						
15-1	2	24311-000100	O-RING, 1AP10.0	2	2	2	2				N
		(A=E/XXX) (B=E/XXX)									
16	2	22312-080160	PIN, PARALLEL M8X16	2	2	2	2				
17	2	129350-01230	BOLT, HEAD	2	2	2	2				W
17A	2	22351-060012	PIN, SPRING 6.0X12	2	2	2	2				W
		(A=E/# 98379) (B=E/# 97968)									
18	1	124240-01871	COVER	1	1	1	1				
19	1	124240-01882	GASKET	1	1						
19-1	1	124240-01883	GASKET	1	1	1	1				N
		(A=E/# A1908) (B=E/# A1869)									
20	1	26216-080222	STUD, M8X 22	4	4	4	4				
21	1	26716-080002	NUT, M8	4	4						
21-1	1	26366-080002	NUT, M8	4	4	4	4				N
		(A=E/# 98379) (B=E/# 97968)									
22	1	22117-080000	WASHER, 8	4	4						Z
		(A=E/XXX) (B=E/XXX)									
23	1	22217-080000	WASHER, SPRING 8	4	4						Z
		(A=E/XXX) (B=E/XXX)									
24	1	121550-01200	BOLT, HEAD	4	4	4	4				
25	1	121450-01231	BOLT, HEAD	2	2						Z
		(A=E/# 98379) (B=E/# 97968)									
26	1	124500-01330	GASKET, HEAD	1	1						
26-1	1	124500-01331	GASKET, HEAD	1	1	1	1				N

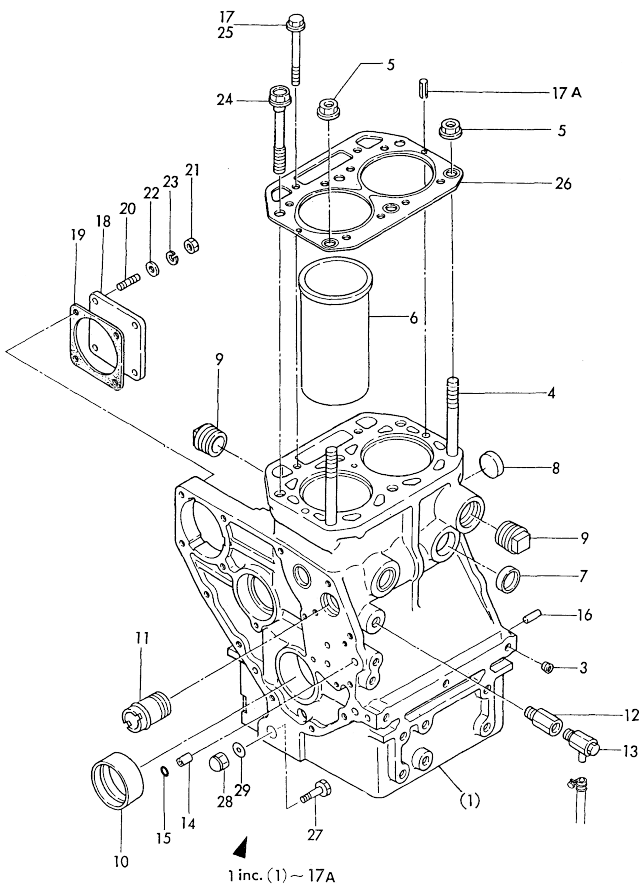
N:Old $\frac{Old}{New}$ New, Q:Old $\frac{Old}{New}$ New, R:Old $\frac{Old}{New}$ New, S:Old $\frac{Old}{New}$ New, W:Add, Z:Discontinued, F:Interchangeable by set, K:Q'ty Change
 ++ CONTINUE ++
 Copyright (C) YANMAR CO., LTD. All Rights Reserved.

Fig.1. CYLINDER BLOCK

(A)=2T75HLE
(B)=2T75HLE-S
(C)=2T75HLEG1

(D)=2T75HLEG1-S
(E)=
(F)=

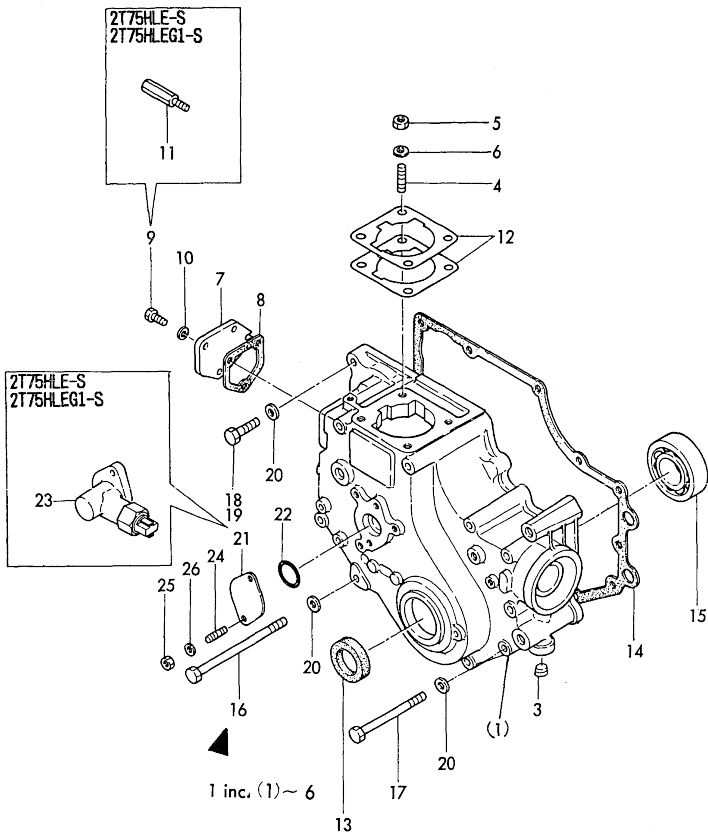
Fig. 1 CYLINDER BLOCK



No.	Lev.	Parts No.	Description	Q'ty						I	R
				(A)	(B)	(C)	(D)	(E)	(F)		
27	1	124500-01950 (A=E# 99098) (B=E# 99069) (A=E# 98379) (B=E# 97968)	BOLT	1	1	1	1				W
28	1	121550-35100 (A=E# 98379) (B=E# 97968)	NUT, CAP PF1/4	1	1	1	1				W
29	1	121550-35111 (A=E# 98379) (B=E# 97968)	GASKET, 18	1	1						W
29-1	1	121550-35110 (A=E# 98379) (B=E# 97968)	GASKET, 18	1	1	1	1				N

Fig.2. GEAR HOUSING

Fig.2 GEAR HOUSING



(A)=2T75HLE
(B)=2T75HLE-S
(C)=2T75HLEG1

(D)=2T75HLEG1-S
(E)=
(F)=

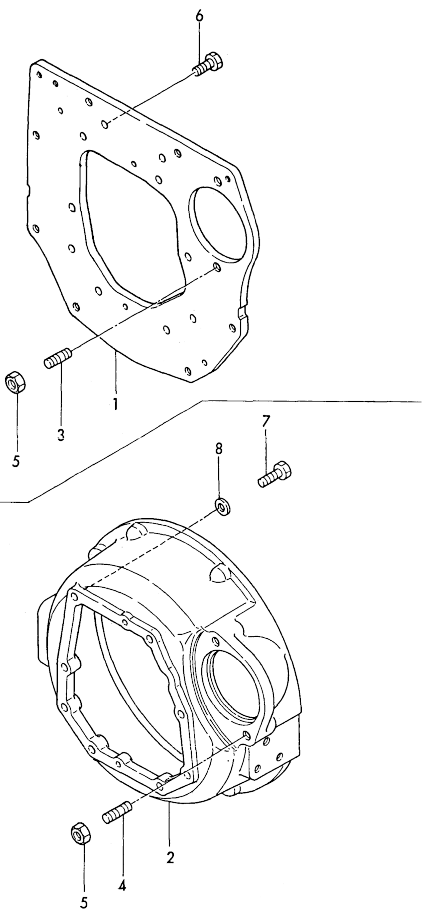
No.	Lev.	Parts No.	Description	Qty						I	R
				(A)	(B)	(C)	(D)	(E)	(F)		
1	1	724000-01611	CASE ASSY, GEAR	1	1						
1-1	1	724000-01612	CASE ASSY, GEAR	1	1	1	1				S
		(A=E# 98379) (B=E# 97968)									
3	2	124060-01050	PLUG, PT1/8	1	1	1	1				
4	2	121450-01560	STUD, M8X22	4	4	4	4				
5	2	26716-080002	NUT, M8	4	4						
5-1	2	26366-080002	NUT, M8	4	4	4	4				N
		(A=E# 98379) (B=E# 97968)									
6	2	43400-500140	SEAL WASHER 8S	4	4						
6-1	2	22217-080000	WASHER, SPRING 8	4	4	4	4				N
		(A=E# 98379) (B=E# 97968)									
7	1	121000-01850	COVER, BLOCK	1	1	1	1				
8	1	121575-01860	GASKET	1	1						
8-1	1	121575-01861	GASKET	1	1	1	1				N
		(A=E# A1908) (B=E# A1869)									
9	1	26116-060142	BOLT, M6X 14 PLATED	3	1						
9-1	1	26106-060122	BOLT, M6X 12 PLATED	3	1	3	1				N
		(A=E# 98379) (B=E# 97968)									
10	1	22217-060000	WASHER, SPRING 6	3	3						Z
		(A=E# 98379) (B=E# 97968)									
11	1	121005-01950	BOLT, M6X15		2		2				
12	1	124950-01951	SHIM SET, ADJUSTING	1	1	1	1				
13	1	121450-01801	SEAL, TC25408	1	1	1	1				
14	1	121575-01510	GASKET, GEAR CASE	1	1						
14-1	1	121575-01511	GASKET, GEAR CASE	1	1	1	1				N
		(A=E# A1908) (B=E# A1869)									
15	1	24101-063050	BEARING, BALL 6305C3	1	1	1	1				
16	1	26116-081152	BOLT, M8X115 PLATED	4	4	4	4				
17	1	26116-080852	BOLT, M8X 85 PLATED	6	6						
17-1	1	26106-080852	BOLT, M8X 85 PLATED	6	6	6	6				N
		(A=E# 98379) (B=E# 97968)									
18	1	26116-080352	BOLT, M8X 35 PLATED	2							
18-1	1	26106-080322	BOLT, M8X 32 PLATED	2		2	2				N
		(A=E# 98379) (B=E# 97968)									
19	1	26116-080322	BOLT, M8X 32 PLATED		2						
19-1	1	26106-080322	BOLT, M8X 32 PLATED		2						N
		(A=E# 98379) (B=E# 97968)									
20	1	22117-080000	WASHER, 8	12	10	12	10				
21	1	121023-01550	COVER	1		1					
22	1	24341-000260	O-RING, 1AS26.0	1	1	1	1				N
		(A=E# A1908) (B=E# A1869)									
22-1	1	24341-000240	O-RING, 1AS24.0	1			1				
23	1	121005-91401	SENSOR		1						
23-1	1	121005-91402	SENSOR		1		1				S
		(A=E# 98379) (B=E# 97968)									
24	1	26216-060142	STUD, M6X 14	2	2	2	2				
25	1	26716-060002	NUT, M6	2	2						
25-1	1	26366-060002	NUT, M6	2	2	2	2				N
		(A=E# 98379) (B=E# 97968)									
26	1	22117-060000	WASHER, 6	2	2						Z
		(A=E# 98379) (B=E# 97968)									

N:Old $\frac{New}{Old}$ New, Q:Old $\frac{New}{Old}$ New, R:Old $\frac{New}{Old}$ New, S:Old $\frac{New}{Old}$ New, W:Add, Z:Discontinued, F:Interchangeable by set, K:Qty Change
Copyright (C) YANMAR CO., LTD. All Rights Reserved.

Fig.3. MOUNTING FLANGE

(A)=2T75HLE
 (B)=2T75HLE-S
 (C)=2T75HLEG1
 (D)=2T75HLEG1-S
 (E)=
 (F)=

Fig. 3 MOUNTING FLANGE

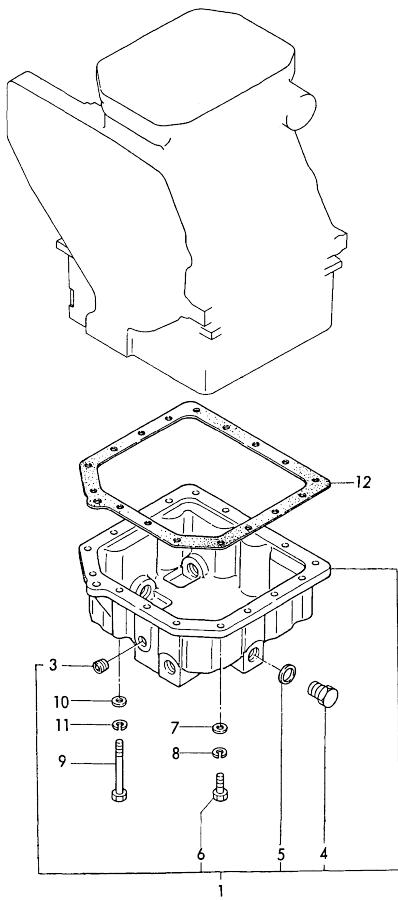


No.	Lev.	Parts No.	Description	Q'ty						I	R
				(A)	(B)	(C)	(D)	(E)	(F)		
1	1	129350-01600	FLANGE, MOUNTING	1							
2	1	121505-01600	FLANGE, MOUNTING		1						
2-1	1	121505-01601	HOUSING, FLYWHEEL			1		1			N
(B=E# 97968)											
3	1	124450-01610	STUD		2		2				
4	1	26216-120252	STUD, M12X 25			2		2			
5	1	26716-120002	NUT, M12		2		2	2			
6	1	26116-100222	BOLT, M10X 22 PLATED		10						
6-1	1	26206-100222	BOLT M10X22		10		10				N
(A=E# 98379)											
7	1	26116-100302	BOLT, M10X 30 PLATED			10					
7-1	1	26206-100282	BOLT, M10X 28 PLATED			10		10			N
(B=E# 97968)											
8	1	22117-100000	WASHER, 10			10					Z
(B=EXXX)											

N:Old $\frac{100}{100}$ New, Q:Old $\frac{100}{100}$ New, R:Old $\frac{100}{100}$ New, S:Old $\frac{100}{100}$ New, W:Add, Z:Discontinued, F:Interchangeable by set, K:Q'ty Change
 Copyright (C) YANMAR CO., LTD. All Rights Reserved.

Fig.4. LUB. OIL SUMP

Fig.4 LUB. OIL SUMP



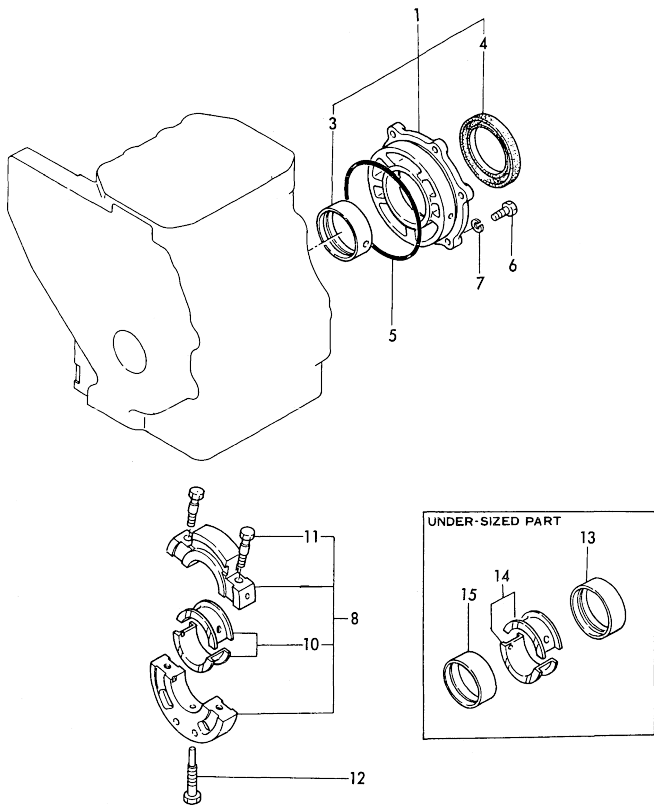
(A)=2T75HLE
(B)=2T75HLE-S
(C)=2T75HLEG1

(D)=2T75HLEG1-S
(E)=
(F)=

No.	Lev.	Parts No.	Description	Q'ty						I	R
				(A)	(B)	(C)	(D)	(E)	(F)		
1	1	724500-01540	SUMP ASSY, OIL	1	1	1	1				
3	2	124160-01910	PLUG, PT1/4	1	1	1	1				
4	2	105425-01690	PLUG, 16	5	5						
4-1	2	121400-01640	PLUG, 16	5	5	5	5				S
		(A=E/# 98379) (B=E/# 97968)									
5	2	43400-500490	SEAL WASHER 16	5	5						
5-1	2	24311-000180	O-RING, 1AP18.0	5	5	5	5				S
		(A=E/# 98379) (B=E/# 97968)									
6	1	26116-060202	BOLT, M6X 20 PLATED	16	16						
6-1	1	26014-060202	BOLT, M6X 20	16	16	16	16				N
		(A=E/# 98379) (B=E/# 97968)									
7	1	22117-060000	WASHER, 6	16	16						Z
		(A=E/XXX) (B=E/XXX)									
8	1	22217-060000	WASHER, SPRING 6	16	16						Z
		(A=E/XXX) (B=E/XXX)									
9	1	26116-060652	BOLT, M6X 65 PLATED	1	1						
9-1	1	26014-060652	BOLT M 6X 65	1	1	1	1				N
		(A=E/# 98379) (B=E/# 97968)									
10	1	22117-060000	WASHER, 6	1	1						Z
		(A=E/XXX) (B=E/XXX)									
11	1	22217-060000	WASHER, SPRING 6	1	1						Z
		(A=E/XXX) (B=E/XXX)									
12	1	124500-01750	GASKET, OIL SUMP	1	1	1	1				

Fig.5. MAIN BEARING HOUSING

Fig. 5 MAIN BEARING HOUSING



(A)=2T75HLE
(B)=2T75HLE-S
(C)=2T75HLEG1

(D)=2T75HLEG1-S
(E)=
(F)=

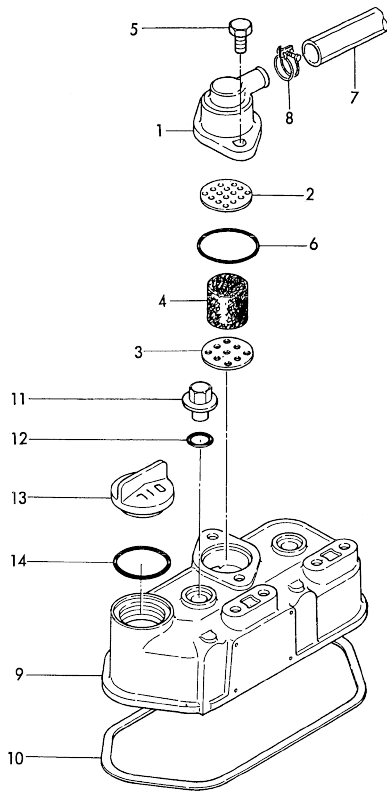
No.	Lev.	Parts No.	Description	Qty						I	R
				(A)	(B)	(C)	(D)	(E)	(F)		
1	1	721550-02500	HOUSING ASSY, METAL	1	1	1	1				
3	2	121550-02110	BEARING, MAIN	1	1	1	1				
4	2	121551-02220	SEAL, OIL	1	1	1	1				
5	1	24341-001350	O-RING, 1AS135.0	1	1	1	1				
6	1	26116-080202	BOLT, M8X 20 PLATED	6	6						
6-1	1	26013-080202	BOLT, M8X 20	6	6	6	6				N
7	1	22217-080000	WASHER, SPRING 8	6	6						Z
8	1	721550-02610	HOUSING ASSY, METAL	1	1	1	1				
10	2	721550-02800	BEARING, MAIN	1	1	1	1				
11	2	121550-02070	BOLT	2	2						
11-1	2	121250-02070	BOLT	2	2	2	2				N
12	1	105225-02300	BOLT	1	1						
12-1	1	121550-02300	BOLT	1	1	1	1				N
13	1	121550-02320	BEARING, 0.25 US	1	1	1	1				1
14	1	721550-02830	BEARING, 0.25 US	1	1	1	1				1
15	1	121550-02310	BEARING, 0.25 US	1	1	1	1				1

Remarks
(1) UNDER SIZED(U.S=0.25) PART.

(A)=2T75HLE
 (B)=2T75HLE-S
 (C)=2T75HLEG1

(D)=2T75HLEG1-S
 (E)=
 (F)=

Fig.6 BONNET



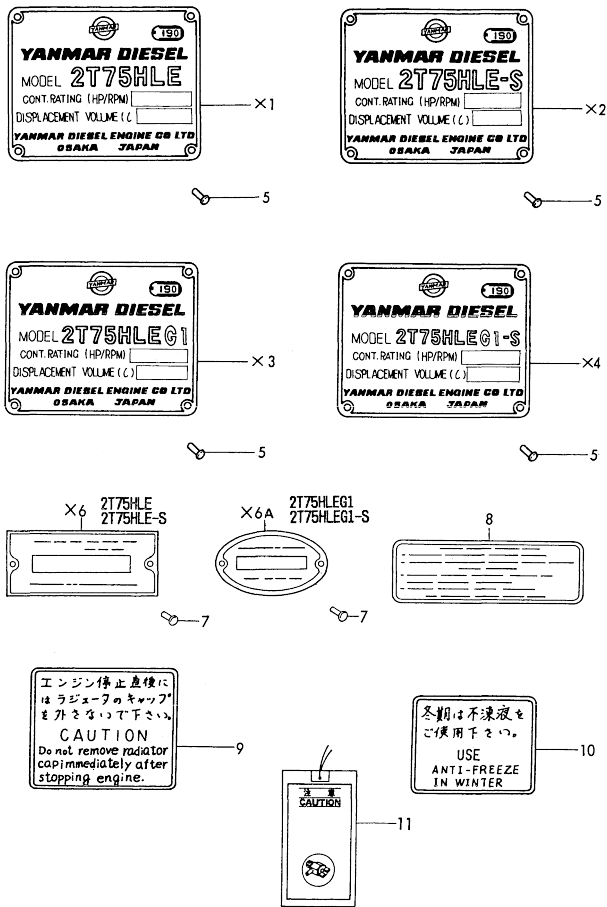
No.	Lev.	Parts No.	Description	Qty						I	R
				(A)	(B)	(C)	(D)	(E)	(F)		
1	1	121450-03011	BODY, BREATHER	1	1						
1-1	1	121450-03012	BODY, BREATHER	1	1	1	1				N
		(A=E/# 98379) (B=E/# 97968)									
2	1	128670-03020	PLATE, BAFFLE	1	1						Z
		(A=E/XXX) (B=E/XXX)									
3	1	128670-03030	PLATE, BAFFLE	1	1	1	1				
4	1	128670-03040	WOOL, STEEL	1	1	1	1				
5	1	121250-01710	BOLT, SUMP M8X14	2	2						
5-1	1	26106-080142	BOLT, M8X 14 PLATED	2	2	2	2				N
		(B=E/# A1869)									
6	1	24341-000400	O-RING, 1AS40.0	1	1	1	1				
7	1	124500-03200	PIPE, BREATHER	1	1						R
7-1	1	171008-03201	PIPE, BREATHER	1	1						
		(A=E/# 98379) (B=E/# 97968)									
7-2	1	171008-03202	PIPE, BREATHER	1	1						R
		(A=E/# 98379) (B=E/# 97968)									
7-3	1	171008-03203	PIPE, BREATHER	1	1	1	1				N
		(A=E/# 98379) (B=E/# 97968)									
8	1	23010-025000	CLAMP, 25	2	2						
8-1	1	171008-03990	CLIP, HOSE 18.5	2	2	2	2				R
		(A=E/# 98379) (B=E/# 97968)									
9	1	124500-11300	BONNET	1	1						
9-1	1	124520-11300	BONNET ASSY, HEAD	1	1	1	1				F 1
		(A=E/# 98379) (B=E/# 97968)									
10	1	124500-11310	GASKET, BONNET	1	1						
10-1	1	124520-11310	GASKET, BONNET	1	1	1	1				S
		(A=E/# 98379) (B=E/# 97968)									
11	1	124160-11360	KNOB	2	2	2	2				
12	1	24314-000120	O-RING, 4CP12.0	2	2						
12-1	1	24311-000120	O-RING, 1AP12.0	2	2	2	2				N
		(A=E/XXX) (B=E/XXX)									
13	1	124160-01751	COVER, FILLER	1	1	1	1				
14	1	24321-000350	O-RING, 1AG35.0	1	1						
14-1	1	24311-000320	O-RING, 1AP32.0	1	1	1	1				N
		(A=E/# A1144) (B=E/# A0570)									

Remarks
 (1) INTERCHANGEABLE BY SIMULTANEOUS
 REPLACEMENT WITH NO.9-1 & NO.10-1

N:Old $\frac{100}{100}$ New, Q:Old $\frac{100}{100}$ New, R:Old $\frac{100}{100}$ New, S:Old $\frac{100}{100}$ New, W:Add, Z:Discontinued, F:Interchangeable by set, K:Qty Change
 Copyright (C) YANMAR CO., LTD. All Rights Reserved.

Fig.7. LABEL

Fig.7 LABEL



(A)=2T75HLE
(B)=2T75HLE-S
(C)=2T75HLE G1

(D)=2T75HLE G1-S
(E)=
(F)=

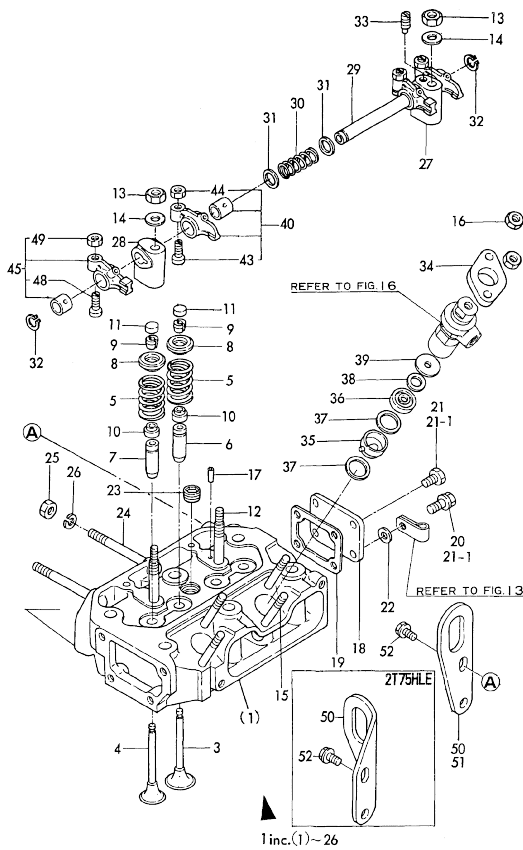
No.	Lev.	Parts No.	Description	Q'ty						I	R
				(A)	(B)	(C)	(D)	(E)	(F)		
5	1	102210-07990	RIVET	4	4	4	4				
7	1	124220-51890	RIVET	2	2	2	2				
8	1	121005-12600	LABEL			1	1				
9	1	121400-44910	LABEL			1	1				
10	1	121400-44900	LABEL			1	1				
11	1	123682-07850	LABEL, CAUTION	1	1	1	1				W

(A)=E# 98379 (B)=E# 97968

Fig.8. CYLINDER HEAD

(A)=2T75HLE
(B)=2T75HLE-S
(C)=2T75HLEG1
(D)=2T75HLEG1-S
(E)=
(F)=

Fig. 8 CYLINDER HEAD



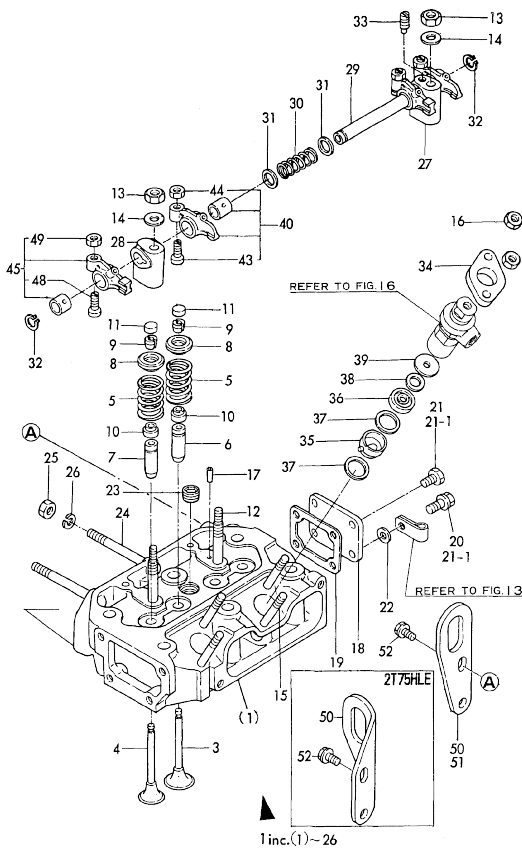
No.	Lev.	Parts No.	Description	Q'ty						I	R
				(A)	(B)	(C)	(D)	(E)	(F)		
1	1	724580-11700	HEAD ASSY, CYLINDER	1	1	1	1				
3	2	104211-11100	VALVE, INTAKE	2	2	2	2				
4	2	121500-11110	VALVE, EXHAUST	2	2	2	2				
5	2	121575-11121	SPRING, VALVE	4	4	4	4				
6	2	124060-11800	GUIDE, VALVE	2	2	2	2				1
7	2	119620-11801	GUIDE, VALVE	2	2	2	2				1
8	2	104211-11180	RETAINER, SPRING	4	4	4	4				
9	2	27310-070001	COTTER, 7	4	4						
9-1	2	101158-11190	COTTER	4	4	4	4				N
		(A=E/XXX) (B=E/XXX)									
10	2	124950-11340	SEAL, VALVE STEM	4	4	4	4				
11	2	104211-11370	CAP, VALVE	4	4	4	4				
12	2	105225-11350	STUD	2	2	2	2				
13	2	26776-100002	NUT, LOCK M10	2	2						
13-1	2	26696-100002	NUT, LOCK M10	2	2	2	2				N
		(A=E/98379) (B=E/97968)									
14	2	22137-100000	WASHER, 10	2	2						Z
		(A=E/XXX) (B=E/XXX)									
15	2	26216-080702	STUD, M8X 70	4	4	4	4				
16	2	26716-080002	NUT, M8	4	4						
16-1	2	121465-11950	NUT	4	4						N
		(A=E/98379) (B=E/97968)									
16A	2	26366-080002	NUT, M8					4	4		
17	2	121000-11050	PIN, 4.5X12	1	1	1	1				
18	2	121450-11670	COVER, HEAD	1	1	1	1				
19	2	121450-11680	GASKET	1	1						
19-1	2	121450-11681	GASKET	1	1	1	1				N
		(A=E/A1908) (B=E/A1869)									
20	2	121250-01710	BOLT, SUMP M8X14	1	1						Z
		(A=E/XXX) (B=E/XXX)									
21	2	26116-080122	BOLT, M8X 12 PLATED	3	3						
21-1	2	26106-080122	BOLT, M8X 12 PLATED	4	4	4	4				K
		(A=E/98379) (B=E/97968)									
22	2	22137-080000	WASHER, 8	1	1						Z
		(A=E/XXX) (B=E/XXX)									
23	2	23873-030000	PLUG, R03	1	1						
23-1	2	23871-030000	PLUG, R03	1	1	1	1				N
		(A=E/XXX) (B=E/XXX)									
24	2	121450-11550	STUD, MANIFOLD	2	2	2	2				
25	2	26716-080002	NUT, M8	2	2						
25-1	2	194990-22050	NUT, M8	2	2	2	2				N
		(A=E/98931) (B=E/98631)									
26	2	22217-080000	WASHER, SPRING 8	2	2						Z
		(A=E/XXX) (B=E/XXX)									
27	1	121450-11260	SUPPORT, ROCKER ARM	1	1	1	1				
28	1	121450-11270	SUPPORT, ROCKER ARM	1	1	1	1				
29	1	124500-11240	SHAFT ASSY, ROCKER	1	1	1	1				
30	1	121550-11280	SPRING	1	1	1	1				
31	1	121550-11290	WASHER	4	4	4	4				
32	1	22242-000140	RING, 14	2	2	2	2				
33	1	26921-080102	SCREW, M8X10	1	1	1	1				

Remarks
(1) REPAIR PARTS

N:Old $\frac{100}{100}$ New, Q:Old $\frac{100}{100}$ New, R:Old $\frac{100}{100}$ New, S:Old $\frac{100}{100}$ New, W:Add, Z:Discontinued, F:Interchangeable by set, K:Q'ty Change
++ CONTINUE ++
Copyright (C) YANMAR CO., LTD. All Rights Reserved.

Fig.8. CYLINDER HEAD

Fig. 8 CYLINDER HEAD



(A)=2T75HLE
(B)=2T75HLE-S
(C)=2T75HLEG1

(D)=2T75HLEG1-S
(E)=
(F)=

No.	Lev.	Parts No.	Description	Q'ty						I	R
				(A)	(B)	(C)	(D)	(E)	(F)		
34	1	101147-11900	RETAINER	2	2						
35	1	121575-11420	CHAMBER, D29/24H25	2	2						
35-1	1	121575-11421	CHAMBER	2	2						N
35A	1	121582-11420	CHAMBER			2	2				
36	1	128695-11410	CHAMBER	2	2						
36A	1	121582-11410	CHAMBER				2	2			
37	1	121550-11451	GASKET, CHAMBER	4	4	4	4				
38	1	128275-11490	PROTECTOR	2	2						
38A	1	103854-11490	INSULATOR			2	2				
39	1	128695-11500	COVER	2	2	2	2				
40	1	721450-11650	ARM ASSY, ROCKER	2	2						
40-1	1	121450-11620	ARM, ROCKER	2	2	2	2				N
43	2	101158-11230	SCREW, VALVE ADJUST	2	2	2	2				
44	2	26756-080002	NUT, LOCK M8	2	2	2	2				
45	1	721450-11660	ARM ASSY, ROCKER	2	2						
45-1	1	121450-11640	ARM, ROCKER	2	2	2	2				N
48	2	101158-11230	SCREW, VALVE ADJUST	2	2	2	2				
49	2	26756-080002	NUT, LOCK M8	2	2	2	2				
50	1	121700-07900	LIFTER			1					
50-1	1	124736-07900	LIFTER			1					N
51	1	124736-07900	LIFTER			1	1	1			
52	1	121250-01710	BOLT, SUMP M8X14	2	2						
52-1	1	26106-080142	BOLT, M8X 14 PLATED	2	2	2	2				N

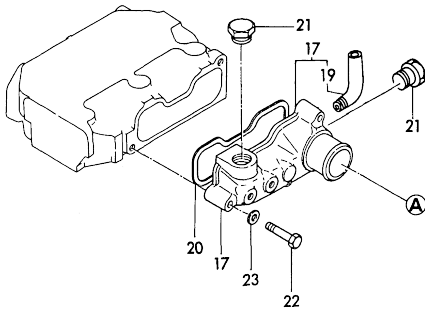
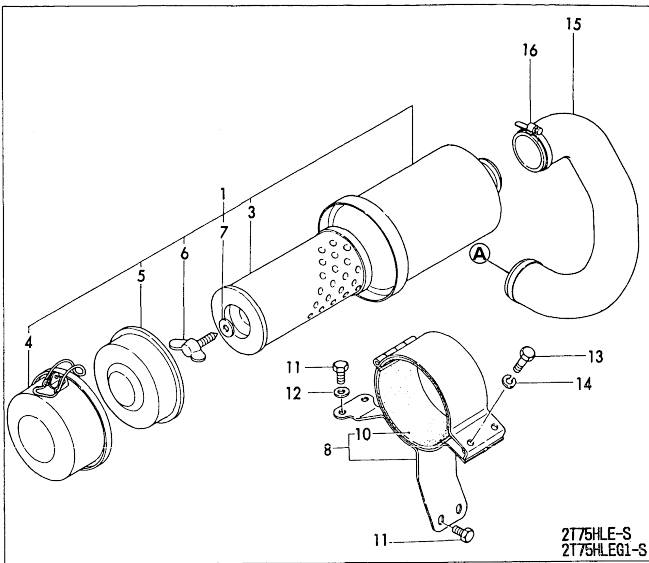
Remarks
(1) REPAIR PARTS

Fig.9. SUC.MANIFOLD & AIR CLEANER

(A)=2T75HLE
(B)=2T75HLE-S
(C)=2T75HLEG1

(D)=2T75HLEG1-S
(E)=
(F)=

Fig. 9 SUCTION MANIFOLD & AIR CLEANER



No.	Lev.	Parts No.	Description	Q'ty						I	R	
				(A)	(B)	(C)	(D)	(E)	(F)			
1	1	121450-12500	CLEANER, AIR		1							
1-1	1	121464-12500 (B=E# 97968)	CLEANER ASSY, AIR		1		1					N
3	2	124066-12510	ELEMENT		1		1					
4	2	121450-12530	PAN ASSY, DUST		1		1					
5	2	124064-12670	BAFFLE ASSY		1		1					
6	2	124064-12680	BOLT		1		1					
7	2	124064-12690	WASHER		1		1					
8	1	124505-12580	SUPPORT ASSY,CLEANER		1		1					
10	2	121023-12570	FELT		2		2					
11	1	26116-080162	BOLT, M8X 16 PLATED		4							
11-1	1	26106-080142 (B=E# 97968)	BOLT, M8X 14 PLATED		4		4					N
12	1	22137-080000 (B=E# 97968) (B=E# 97968)	WASHER, 8		2							Z
13	1	26116-080302	BOLT, M8X 30 PLATED		2							
13-1	1	26106-080322 (B=E# 97968)	BOLT, M8X 32 PLATED		2		2					N
14	1	22217-080000 (B=E# 97968) (B=E# 97968)	WASHER, SPRING 8		2							Z
15	1	124505-12210	HOSE, AIR CLEANER		1		1					
16	1	23000-060000	CLAMP, 60		2		2					
17	1	124500-12701	MANIFOLD, AIR INTAKE		1		1					
17-1	1	724500-12750 (A=E# 98379) (B=E# 97968)	MANIFOLD, AIR INTAKE		1		1					N
17-2	1	124500-12730 (A=E# 98379) (B=E# 97968)	MANIFOLD ASSY,INTAKE		1	1	1	1	1			N
19	2	121500-12790	JOINT, PIPE PT1/4		1	1	1	1	1			
20	1	124500-12710	GASKET, MANIFOLD		1	1	1	1	1			
21	1	124450-11320	PLUG		1	1	1	1	1			
22	1	26116-080402	BOLT, M8X 40 PLATED		2		2					
22-1	1	26106-080382 (A=E# 98379) (B=E# 97968)	BOLT, M8X 38 PLATED		2	2	2	2	2			N
23	1	22117-080000 (A=E# 98379) (B=E# 97968)	WASHER, 8		2		2					Z

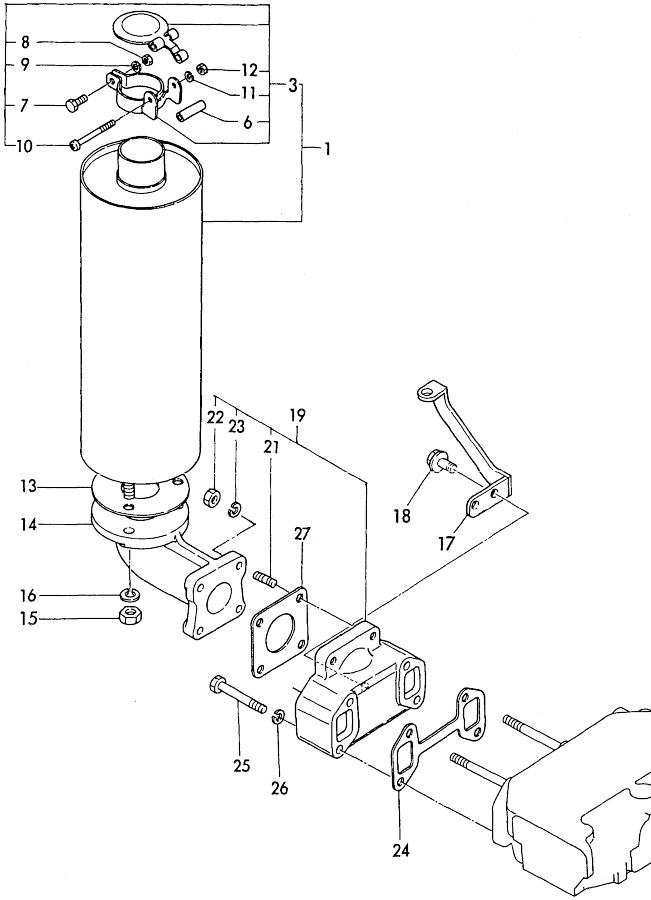
N:Old $\frac{100}{100}$ New. Q:Old $\frac{100}{100}$ New. R:Old $\frac{100}{100}$ New. S:Old $\frac{100}{100}$ New. W:Add. Z:Discontinued. F:Interchangeable by set. K:Q'ty Change
Copyright (C) YANMAR CO., LTD. All Rights Reserved.

Fig.10. EXH.MANIFOLD & SILENCER

(A)=2T75HLE
(B)=2T75HLE-S
(C)=2T75HLEG1

(D)=2T75HLEG1-S
(E)=
(F)=

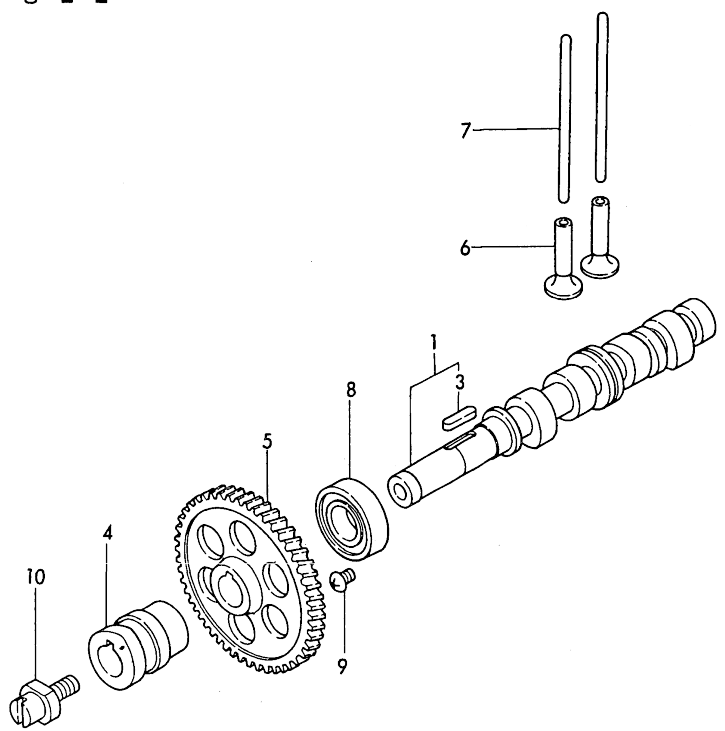
Fig. 10 EXHAUST MANIFOLD & SILENCER



No.	Lev.	Parts No.	Description	Q'ty						I	R
				(A)	(B)	(C)	(D)	(E)	(F)		
1	1	121100-13490	SILENCER ASSY	1	1						
3	2	721100-13570	CAP ASSY, SILENCER	1	1						
6	3	23042-080035	PIPE 8X1.6X 35	1	1						
7	3	26116-060162	BOLT, M6X 16 PLATED	1							
7-1	3	26013-060162	BOLT, M6X 16 (B=E# 97968)	1	1					N	
8	3	26716-060002	NUT, M6	1							
8-1	3	26366-060002	NUT, M6 (B=E# 97968)	1	1					N	
9	3	22217-060000	WASHER, SPRING 6 (B=E# 97968)	1							Z
10	3	26557-040452	SCREW, M4X45	1	1						
11	3	22217-040000	WASHER, SPRING 4	1	1						
12	3	26716-040002	NUT, M4	1	1						
13	1	103954-13200	GASKET, SILENCER	1	1						
14	1	124732-13550	PIPE	1	1						
15	1	26736-100002	NUT, M10	3							
15-1	1	26606-100002	NUT, M10 (B=E# 97968)	3	3					N	
16	1	22217-100000	WASHER, SPRING 10	3	3						
17	1	121086-13530	SUPPORT, SILENCER (B=E# 00102)	1	1					W	
18	1	121250-01710	BOLT, SUMP M8X14 (B=E# 00102)	2	2					W	
18-1	1	26106-080142	BOLT, M8X 14 PLATED (B=E# A1869)	2	2					N	
19	1	724500-13500	MANIFOLD ASSY	1	1	1	1				
21	2	26216-080222	STUD, M8X 22	4	4	4	4				
22	2	26716-080002	NUT, M8	4	4						
22-1	2	26366-080002	NUT, M8	4	4	4	4			N	
23	2	22217-080000	WASHER, SPRING 8 (A=E# 98379) (B=E# 97968)	4	4	4	4				
24	1	124500-13520	GASKET	1	1	1	1				
25	1	26116-080582	BOLT M 8X 58 PLATED	2	2						
25-1	1	121465-13582	BOLT, M8X58 (A=E# 98379) (B=E# 98122)	2	2	2	2			N	
26	1	22217-080000	WASHER, SPRING 8 (A=E# 98379) (B=E# 98122)	2	2						Z
27	1	121000-13200	GASKET, SILENCER (A=E# 98379) (B=E# 98122)	1	1						
27-1	1	121000-13201	GASKET, SILENCER (A=E# A1908) (B=E# A1869)	1	1	1	1			N	

N:Old $\frac{New}{Old}$ New, Q:Old $\frac{New}{Old}$ New, R:Old $\frac{New}{Old}$ New, S:Old $\frac{New}{Old}$ New, W:Add, Z:Discontinued, F:Interchangeable by set, K:Q'ty Change
Copyright (C) YANMAR CO., LTD. All Rights Reserved.

Fig. 11 CAMSHAFT



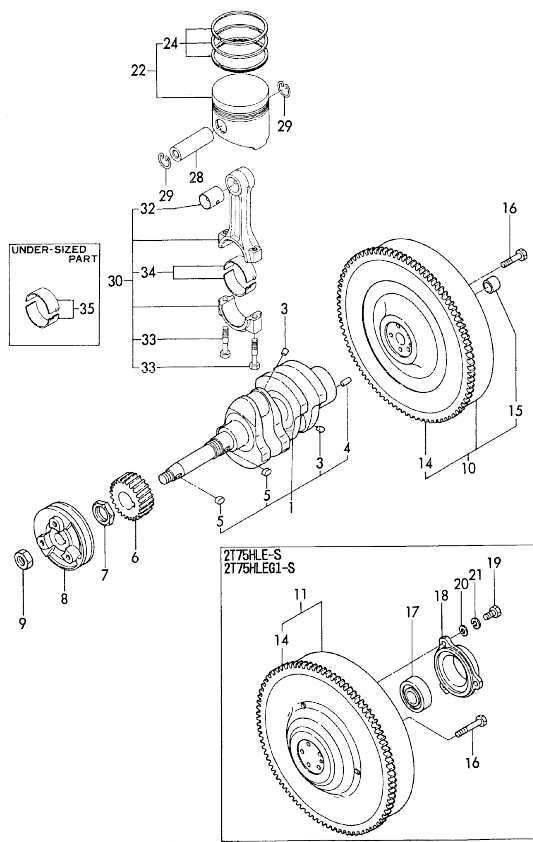
(A)=2T75HLE
 (B)=2T75HLE-S
 (C)=2T75HLEG1

(D)=2T75HLEG1-S
 (E)=
 (F)=

No.	Lev.	Parts No.	Description	Q'ty						I	R
				(A)	(B)	(C)	(D)	(E)	(F)		
1	1	724580-14580	CAMSHAFT ASSY	1	1						
1-1	1	724520-14580	CAMSHAFT ASSY	1	1	1	1				S
		(A=E/# 98379) (B=E/# 97968)									
3	2	22512-070300	KEY, 7X 30	1	1	1	1				
4	1	124000-14090	CAM, FUEL	1	1						
4A	1	124082-14090	CAM, FUEL					1	1		
5	1	129350-14100	GEAR, CAMSHAFT	1	1	1	1				
6	1	104200-14200	TAPPET	4	4	4	4	4	4		
7	1	121550-14400	ROD, PUSH	4	4	4	4	4	4		
8	1	24101-062054	BEARING, BALL 6205	1	1	1	1				
9	1	26587-080102	SCREW, M8X10	1	1						
9-1	1	26587-080122	SCREW, M8X12	1	1	1	1				N
		(A=E/# A1908) (B=E/# A1869)									
10	1	121000-14110	BOLT, CAMSHAFT	1	1						
10-1	1	121450-14120	NUT	1	1	1	1				S
		(A=E/# 98379) (B=E/# 97968)									

Fig.12. CRANKSHAFT & PISTON

Fig.12 CRANKSHAFT & PISTON



(A)=2T75HLE
(B)=2T75HLE-S
(C)=2T75HLEG1

(D)=2T75HLEG1-S
(E)=
(F)=

No.	Lev.	Parts No.	Description	Q'ty						I	R
				(A)	(B)	(C)	(D)	(E)	(F)		
1	1	724500-21700	CRANKSHAFT ASSY	1	1	1	1				
3	2	27221-060140	PLUG 6X14	2	2						
3-1	2	24190-080001	BALL, STEEL 1/4	2	2	2	2				R
		(A=E/# 98379) (B=E/# 97968)									
4	2	22312-080160	PIN, PARALLEL M8X16	1	1	1	1				
5	2	22512-070180	KEY, 7X 18	2	2	2	2				
6	1	129350-21200	GEAR, CRANKSHAFT	1	1	1	1				
7	1	121450-21540	NUT, CRANKSHAFT GEAR	1	1						
7-1	1	121450-21541	NUT, CRANKSHAFT GEAR	1	1	1	1				N
		(A=E/# 98379) (B=E/# 97968)									
8	1	124505-21650	V-PULLEY	1	1	1	1				
9	1	26776-180002	NUT, LOCK M18	1	1	1	1				
10	1	124500-21590	FLYWHEEL ASSY	1	1	1	1				
11	1	124505-21590	FLYWHEEL ASSY			1	1				
14	2	129350-21600	GEAR, RING	1	1	1	1				
15	2	121000-21230	BUSH	1	1	1	1				
16	1	121000-21500	BOLT, FLYWHEEL	5	5						
16-1	1	121111-21500	BOLT, FLYWHEEL	5	5						R
		(A=E/# 98379) (B=E/# 98595)									
16-2	1	121111-24501	BOLT, FLYWHEEL	5	5	5	5				N
		(A=E/# 98379) (B=E/# 98595)									
17	1	24107-062054	BEARING, BALL 6205ZZ			1	1				
18	1	121100-21450	RETAINER, BEARING			1	1				
19	1	26116-080222	BOLT, M8X 22 PLATED	3							
19-1	1	26106-080182	BOLT, M8X 18 PLATED	3		3					N
		(A=E/# 98379) (B=E/# 98595)									
20	1	22117-080000	WASHER, 8			3					Z
		(A=E/XXX) (B=E/XXX)									
21	1	22217-080000	WASHER, SPRING 8			3					Z
		(A=E/XXX) (B=E/XXX)									
22	1	121500-22090	PISTON ASSY	2	2	2	2				
24	2	721500-22500	RING SET, PISTON	2	2	2	2				
28	1	104200-22300	PIN, PISTON	2	2	2	2				
29	1	172100-22400	CIRCLIP	4	4	4	4				
30	1	721550-23100	ROD ASSY, CONNECTING	2	2	2	2				
32	2	124060-23100	BEARING, PISTON PIN	2	2	2	2				
33	2	121550-23200	BOLT, CONNECTING ROD	4	4	4	4				
34	2	721550-23600	BEARING, CRANK PIN	2	2	2	2				
34A	3	121550-23300	BEARING, CRANK PIN	4	4	4	4				
35	1	121550-23380	BEARING, 0.25 US	2	2	2	2				1

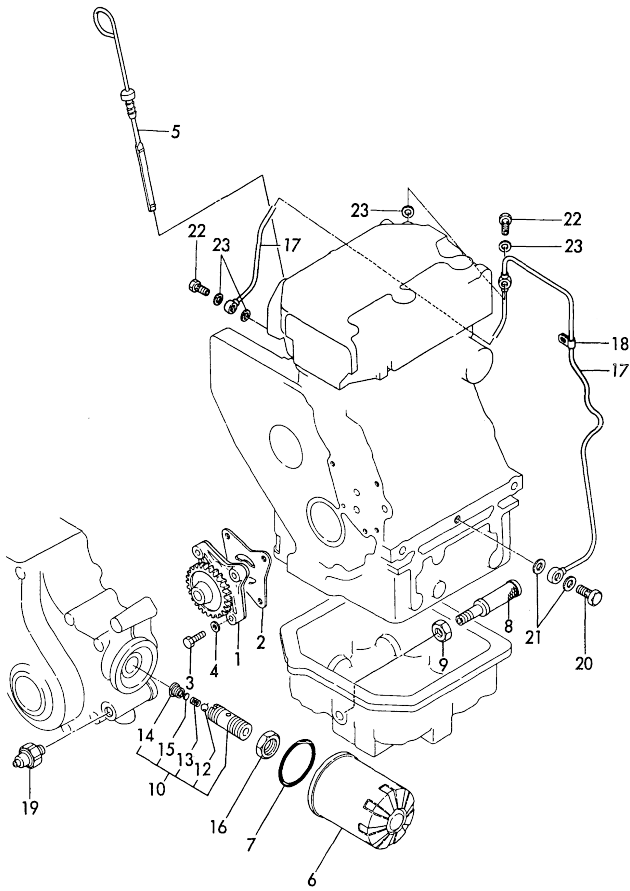
Remarks
(1) UNDER SIZED(U.S=0.25) PART.

N:Old $\frac{100}{100}$ New, Q:Old $\frac{100}{100}$ New, R:Old $\frac{100}{100}$ New, S:Old $\frac{100}{100}$ New, W:Add, Z:Discontinued, F:Interchangeable by set, K:Q'ty Change
Copyright (C) YANMAR CO., LTD. All Rights Reserved.

Fig.13. LUB. OIL SYSTEM

(A)=2T75HLE
(D)=2T75HLEG1-S
(B)=2T75HLE-S
(E)=
(C)=2T75HLEG1
(F)=

Fig. 13 LUB. OIL SYSTEM



No.	Lev.	Parts No.	Description	Q'ty						I	R
				(A)	(B)	(C)	(D)	(E)	(F)		
1	1	121575-32090	PUMP ASSY, OIL	1	1	1	1				
2	1	121450-32021	GASKET, PUMP	1	1	1	1				
3	1	26116-060222	BOLT, M6X 22 PLATED	3	3						
3-1	1	26013-060222	BOLT, M6X 22	3	3	3	3				N
		(A=E# 98379) (B=E# 97968)									
4	1	22137-060000	WASHER, 6	3	3						Z
		(A=E#XXXX) (B=E#XXXX)									
5	1	171008-34801	DIPSTICK, OIL	1	1						
5-1	1	171008-34802	DIPSTICK, OIL	1	1	1	1				N
		(A=E# A1310) (B=E# A1313)									
6	1	124550-35110	ELEMENT	1	1						
6-1	1	124085-35111	FILTER, OIL	1	1	1	1				N
		(A=E# A1908) (B=E# A1869)									
7	1	124450-35110	O-RING	1	1	1	1				
8	1	124000-35090	PIPE ASSY, OIL INLET	1	1	1	1				
9	1	124450-35070	NUT, PF1/4	1	1	1	1				
10	1	124085-35300	VALVE ASSY, CONTROL	1	1	1	1				
12	2	24190-100001	BALL, STEEL 5/16	1	1	1	1				
13	2	121250-35320	SPRING, VALVE	1	1	1	1				
14	2	121250-35330	RETAINER, SPRING	1	1	1	1				
15	2	121250-35340	SHIM	1	1	1	1				
16	1	124085-35350	NUT, M20	1	1	1	1				
17	1	124500-39200	PIPE ASSY, OIL	1	1	1	1				
18	1	124450-39240	RETAINER, PIPE	1	1	1	1				
19	1	124160-39450	SWITCH, 0.5KG	1	1	1	1				
20	1	124160-39140	BOLT, PIPE JOINT M10	1	1	1	1				
21	1	23414-100000	GASKET, 10X1.0	2	2	2	2				
22	1	124550-59820	BOLT, PIPE JOINT M8	2	2	2	2				
23	1	23414-080000	GASKET, 8X1.0	4	4	4	4				

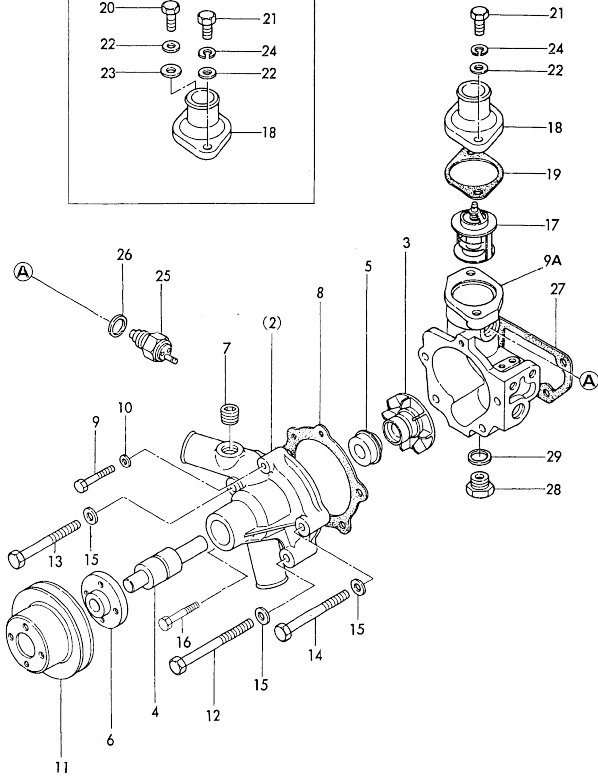
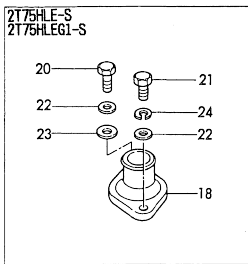
N:Old $\frac{New}{Old}$ New, Q:Old $\frac{New}{Old}$ New, R:Old $\frac{New}{Old}$ New, S:Old $\frac{New}{Old}$ New, W:Add, Z:Discontinued, F:Interchangeable by set, K:Q'ty Change
Copyright (C) YANMAR CO., LTD. All Rights Reserved.

Fig.14. COOLING WATER PUMP

(A)=2T75HLE
(B)=2T75HLE-S
(C)=2T75HLEG1

(D)=2T75HLEG1-S
(E)=
(F)=

Fig. 14 COOLING WATER PUMP



1 inc. 2(2) ~ 7) ~ 9A

No.	Lev.	Parts No.	Description	Qty						I	R
				(A)	(B)	(C)	(D)	(E)	(F)		
1	1	121000-42010 (A=E/XXX) (B=E/XXX)	PUMP ASSY, WATER	1	1	1	1				W
2	2	121000-42100	PUMP ASSY, WATER	1	1	1	1				
3	3	129350-42200	IMPELLER	1	1	1	1				
4	3	121450-42240	BEARING, SHAFT	1	1	1	1				
5	3	121450-42310	SEAL, MECHANICAL	1	1	1	1				
6	3	121450-42260	FLANGE, V-PULLEY	1	1	1	1				
7	3	23873-030000	PLUG, R03	1	1						
7-1	2	23871-030000	PLUG, R03	1	1	1	1				N
8	2	121000-42050 (A=E/XXX) (B=E/XXX)	GASKET, WATER PUMP	1	1						
8-1	2	121000-42051 (A=E/XXX) (B=E/XXX)	GASKET, WATER PUMP	1	1	1	1				N
9	2	26116-060352 (A=E/98379) (B=E/97968)	BOLT, M6X 35 PLATED	1	1						
9-1	2	26106-060322 (A=E/98379) (B=E/97968)	BOLT, M6X 32 PLATED	1	1	1	1				N
9A	2	121000-42120 (A=E/98379) (B=E/97968)	BRACKET, PUMP	1	1	1	1				
10	1	22117-060000	WASHER, 6	1	1	1	1				Z
11	1	121450-42350 (A=E/XXX) (B=E/XXX)	V-PULLEY	1	1	1	1				
12	1	26116-081052	BOLT, M8X105 PLATED	1	1						
12-1	1	26106-081052	BOLT, M8X105 PLATED	1	1	1	1				N
13	1	26116-080902 (A=E/98379) (B=E/97968)	BOLT, M8X 90 PLATED	1	1						
13-1	1	26106-080872 (A=E/98379) (B=E/97968)	BOLT M 8X 87 PLATED	1	1	1	1				N
14	1	26116-080852 (A=E/98379) (B=E/97968)	BOLT, M8X 85 PLATED	2	2						
14-1	1	26106-080822 (A=E/98379) (B=E/97968)	BOLT M 8X 82 PLATED	2	2	2	2				N
15	1	22117-080000	WASHER, 8	3	3						Z
16	1	26106-060322 (A=E/98379) (B=E/97968)	BOLT, M6X 32 PLATED	1	1	1	1				W
17	1	129350-49800	THERMOSTAT, 71	1	1	1	1				
18	1	129350-49530	COVER, THERMOSTAT	1	1	1	1				
19	1	129350-49540	GASKET	1	1						
19-1	1	129350-49541 (A=E/A1908) (B=E/A1869)	GASKET	1	1	1	1				N
20	1	26116-080282	BOLT, M8X 28 PLATED	1							
20-1	1	26106-080282 (B=E/XXX)	BOLT, M8X 28 PLATED	1	1						N
21	1	26116-080222	BOLT, M8X 22 PLATED	2	1						
21-1A	1	26106-080182 (A=E/98379)	BOLT, M8X 18 PLATED	2		2					N
21-1B	1	26106-080222 (B=E/97968)	BOLT, M8X 22 PLATED	1		1					N
22	1	22117-080000 (A=E/XXX) (B=E/XXX)	WASHER, 8	2	1						Z
23	1	22157-080000	WASHER, 8	1		1					
24	1	22217-080000 (A=E/XXX) (B=E/XXX)	WASHER, SPRING 8	2	1						Z

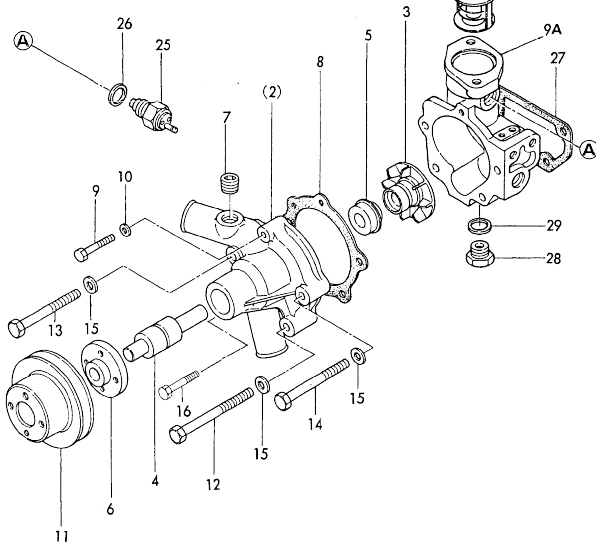
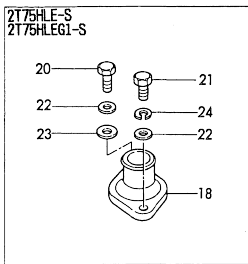
N:Old $\frac{New}{Old}$ New, Q:Old $\frac{New}{Old}$ New, R:Old $\frac{New}{Old}$ New, S:Old $\frac{New}{Old}$ New, W:Add, Z:Discontinued, F:Interchangeable by set, K:Qty Change
++ CONTINUE ++
Copyright (C) YANMAR CO., LTD. All Rights Reserved.

Fig.14. COOLING WATER PUMP

Fig. 14 COOLING WATER PUMP

(A)=2T75HLE
(B)=2T75HLE-S
(C)=2T75HLEG1

(D)=2T75HLEG1-S
(E)=
(F)=

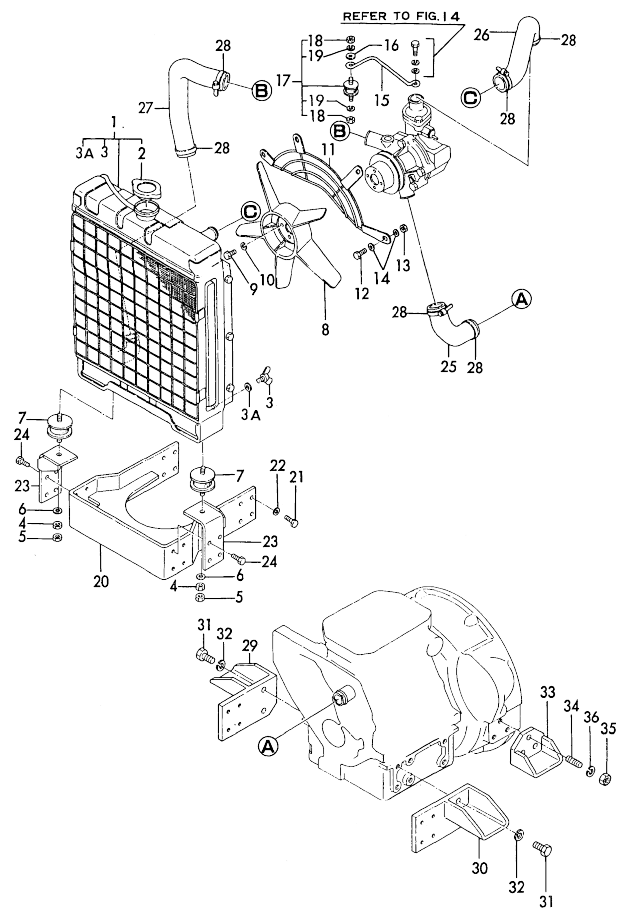


No.	Lev.	Parts No.	Description	Q'ty						I	R
				(A)	(B)	(C)	(D)	(E)	(F)		
25	1	121250-44901	SWITCH, 110	1	1	1	1				
26	1	124465-44950	GASKET, 16	1	1	1	1				
27	1	121450-44410	GASKET	1	1	1	1				
28	1	23883-160002	PLUG, 16	1	1						
28-1	1	121450-42450	PLUG, M16	1	1	1	1				N
(A=E# 98379) (B=E# 97968)											
29	1	124465-44950	GASKET, 16	1	1	1	1				

Fig.15. COOLING WATER SYSTEM

(A)=2T75HLE
(B)=2T75HLE-S
(C)=2T75HLEG1
(D)=2T75HLEG1-S
(E)=
(F)=

Fig. 15 COOLING WATER SYSTEM

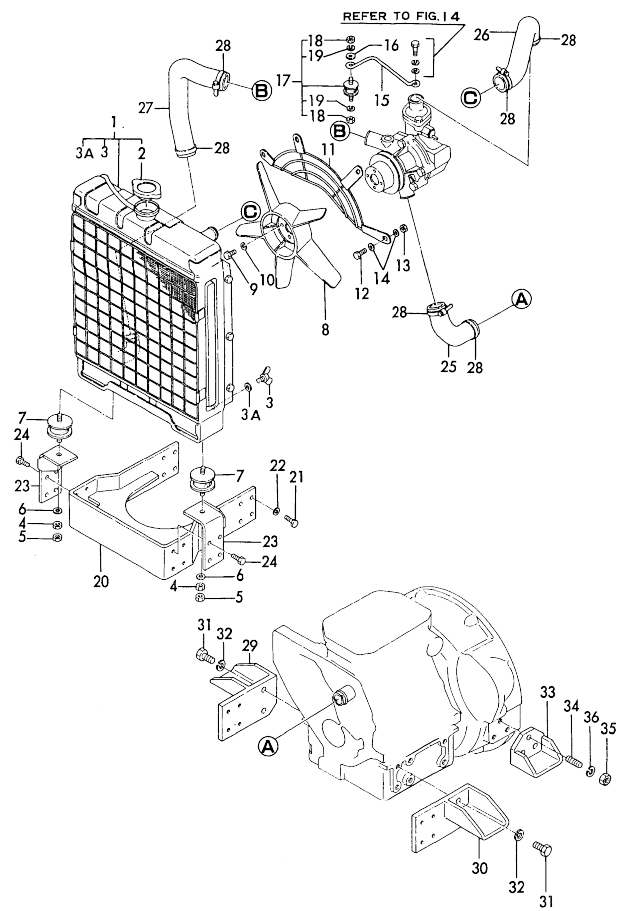


No.	Lev.	Parts No.	Description	Q'ty						I	R
				(A)	(B)	(C)	(D)	(E)	(F)		
1	1	124005-44501	RADIATOR		1						
1-1	1	124005-44502	RADIATOR		1		1				N
		(B=E# A1313)									
2	2	124450-44590	CAP, RADIATOR		1						
2-1	2	123682-44210	CAP, RADIATOR		1		1				N
		(B=E-EXXX)									
3	2	124550-44690	COCK, WATER		1						
3-1	2	124060-44510	COCK, DRAIN		1		1				N
		(B=E-EXXX)									
3A	2	124060-44520	GASKET		1		1				W
		(B=E-EXXX)									
4	1	26716-100002	NUT, M10		2						
4-1	1	26706-100002	NUT, M10		2		2				N
		(B=E# 97968)									
5	1	26756-100002	NUT, LOCK M10		2						
5-1	1	26796-100002	NUT, LOCK M10		2		2				N
		(B=E# 97968)									
6	1	22137-100000	WASHER, 10		2						Z
		(B=E-EXXX)									
7	1	121400-44650	ABSORBER		2		2				
8	1	124700-44740	FAN, COOLING 5X310		1	1	1	1			
9	1	26116-060142	BOLT, M6X 14 PLATED		4	4					
9-1	1	26014-060162	BOLT, M6X 16		4	4	4	4			N
		(A=E# 98379) (B=E# 97968)									
10	1	22217-060000	WASHER, SPRING 6		4	4					Z
		(A=E-EXXX) (B=E-EXXX)									
11	1	121005-44511	NET, WIRE		1		1				
12	1	26116-080162	BOLT, M8X 16 PLATED		4						
12-1	1	26106-080162	BOLT, M8X 16 PLATED		4		4				N
		(B=E# 97968)									
13	1	26716-080002	NUT, M8		4						
13-1	1	26366-080002	NUT, M8		4		4				N
		(B=E# 97968)									
14	1	22137-080000	WASHER, 8		8						Z
		(B=E-EXXX)									
15	1	121005-44620	SUPPORT, RADIATOR		1		1				
16	1	22157-080000	WASHER, 8		2						
16-1	1	22157-080000	WASHER, 8		1		1				K
		(B=E-EXXX)									
17	1	121400-44640	ABSORBER		1		1				
18	2	26716-080002	NUT, M8		2						
18-1	2	26366-080002	NUT, M8		2		2				N
		(B=E# A1172)									
19	2	22217-080000	WASHER, SPRING 8		2		2				
20	1	121505-44951	BRACKET, RADIATOR		1		1				
21	1	26116-080252	BOLT, M8X 25 PLATED		8						
21-1	1	26106-080252	BOLT, M8X 25 PLATED		8		8				N
		(B=E# 97968)									
22	1	22217-080000	WASHER, SPRING 8		8						Z
		(B=E-EXXX)									
23	1	121400-44962	BRACKET, RADIATOR		2		2				

N:Old ^{100%}/_{100%} New, Q:Old ^{100%}/_{100%} New, R:Old ^{100%}/_{100%} New, S:Old ^{100%}/_{100%} New, W:Add, Z:Discontinued, F:Interchangeable by set, K:Q'ty Change
 ++ CONTINUE ++
 Copyright (C) YANMAR CO., LTD. All Rights Reserved.

Fig.15. COOLING WATER SYSTEM

Fig. 15 COOLING WATER SYSTEM



(A)=2T75HLE
(B)=2T75HLE-S
(C)=2T75HLEG1

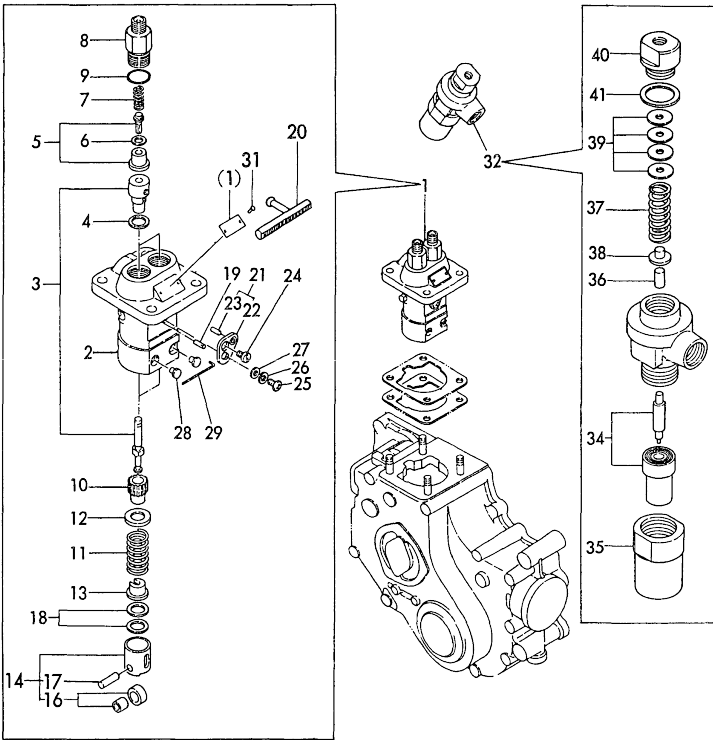
(D)=2T75HLEG1-S
(E)=
(F)=

No.	Lev.	Parts No.	Description	Q'ty						I	R
				(A)	(B)	(C)	(D)	(E)	(F)		
24	1	26116-080162	BOLT, M8X 16 PLATED		8						
24-1	1	26116-080162 (B=E# 97968)	BOLT, M8X 16 PLATED		8		8				N
25	1	121000-49030	PIPE, WATER		1	1					
25-1	1	121500-49030 (A=E# A1310) (B=E# A1313)	PIPE, WATER		1	1	1	1			N
26	1	121005-49010	PIPE, WATER			1		1			
27	1	121005-49020	PIPE, WATER			1					
27-1	1	121005-49023 (B=E# A1313)	PIPE, WATER			1		1			N
28	1	23010-038000	CLAMP, 38		2	6	2	6			
29	1	121505-08100	FOOT		1			1			
30	1	121505-08110	FOOT		1			1			
31	1	26116-120252	BOLT, M12X 25 PLATED		4			4			
32	1	22217-120000	WASHER, SPRING 12		4			4			
33	1	121005-08120	FOOT		2			2			
34	1	26226-100252	STUD, M10X 25		6			6			
35	1	26716-100002	NUT, M10		6						
35-1	1	26706-100002 (B=E# 97968)	NUT, M10		6			6			N
36	1	22217-100000	WASHER, SPRING 10		6			6			

Fig.16. FUEL INJECTION PUMP

(A)=2T75HLE
(D)=2T75HLEG1-S
(B)=2T75HLE-S
(E)=
(C)=2T75HLEG1
(F)=

Fig. 16 FUEL INJECTION PUMP



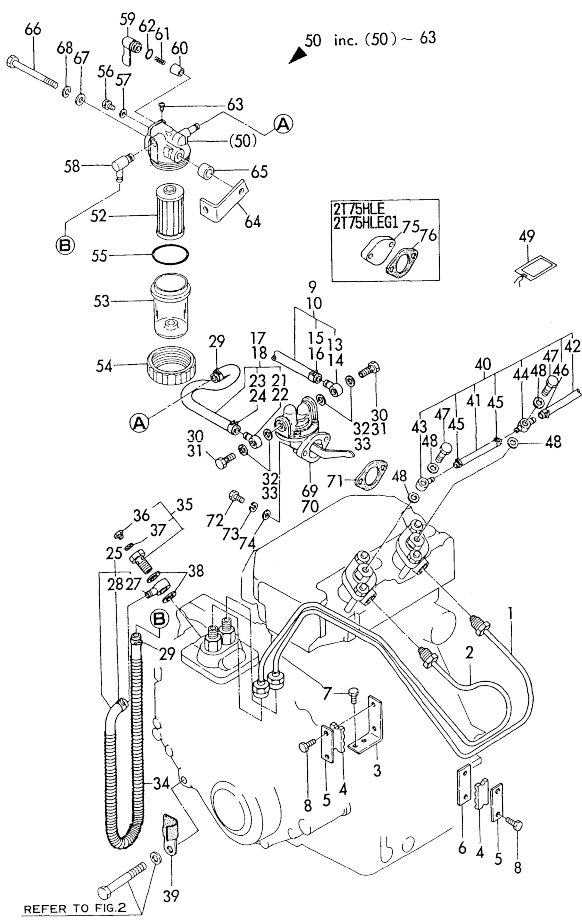
No.	Lev.	Parts No.	Description	Qty						I	R	
				(A)	(B)	(C)	(D)	(E)	(F)			
1	1	724500-51700	PUMP ASSY, INJECTION									
1A	1	724582-51100	PUMP ASSY, INJECTION									
2	2	124950-51010	BODY, FUEL PUMP	1	1		1	1				
3	2	121575-51100	PLUNGER ASSY	2	2							
3A	2	121550-51100	PLUNGER ASSY					2	2			
4	2	124950-51270	GASKET	2	2		2	2	2			
5	2	124060-51300	VALVE ASSY, DELIVERY	2	2		2	2	2			
6	2	124550-51350	GASKET, DELIVERY	2	2		2	2	2			
7	2	124550-51320	SPRING, DELIVERY	2	2		2	2	2			
8	2	124550-51341	HOLDER, DELIVERY L43	2	2		2	2	2			
9	2	124550-51370	O-RING	2	2		2	2	2			
10	2	124950-51510	PINION	2	2		2	2	2			
11	2	124950-51190	SPRING, PLUNGER	2	2		2	2	2			
12	2	124950-51170	RETAINER, SPRING A	2	2		2	2	2			
12-1	2	174307-51170	RETAINER, SPRING A	2	2		2	2	2			N
(A=E/# A1909) (B=E/# A1869)												
13	2	174307-51181	RETAINER, SPRING B	2	2		2	2	2			
14	2	724550-51520	GUIDE, PLUNGER	2	2		2	2	2			
16	3	711100-51540	ROLLER ASSY	2	2		2	2	2			
17	3	174100-54120	PIN	2	2		2	2	2			
18	2	174307-51700	SHIM SET	2	2		2	2	2			
19	2	103854-51251	PIN, PLUNGER	1	1		1	1	1			
20	2	124085-51500	RACK, CONTROL	1	1		1	1	1			
21	2	124950-51640	PLATE ASSY, ADJUST	1	1		1	1	1			
22	3	124950-51650	PLATE	1	1		1	1	1			
23	3	124950-51670	PIN	1	1		1	1	1			
24	2	103854-51660	SCREW	1	1		1	1	1			
25	2	26587-050102	SCREW, M5X10	1	1							
25-1	2	26033-050102	SCREW, M5X10	1	1		1	1	1			N
(A=E/XXX) (B=E/XXX)												
26	2	22217-050000	WASHER, SPRING 5	1	1							Z
(A=E/XXX) (B=E/XXX)												
27	2	22137-050000	WASHER, 5	1	1							Z
(A=E/XXX) (B=E/XXX)												
28	2	124950-51450	PIECE, GUIDE	2	2		2	2	2			
29	2	174307-51460	PIN, LOCK	1	1		1	1	1			
31	2	124220-51890	RIVET	2	2		2	2	2			
32	1	721500-53100	VALVE ASSY, INJECTION	2	2		2	2	2			
34	2	124770-53000	VALVE ASSY, INJECTION	2	2		2	2	2			
35	2	104200-53080	NUT, NOZZLE	2	2		2	2	2			
36	2	113200-53110	SPINDLE, INTER	2	2		2	2	2			
37	2	104211-53120	SPRING, NOZZLE	2	2		2	2	2			
38	2	113200-53120	RETAINER, SPRING	2	2		2	2	2			
39	2	110250-53150	PLATE ASSY, ADJUST	2	2		2	2	2			
40	2	103854-53180	RETAINER, SPRING	2	2		2	2	2			
41	2	172100-53200	GASKET	2	2		2	2	2			

Fig.17. FUEL SYSTEM

(A)=2T75HLE
(B)=2T75HLE-S
(C)=2T75HLEG1

(D)=2T75HLEG1-S
(E)=
(F)=

Fig.17 FUEL SYSTEM

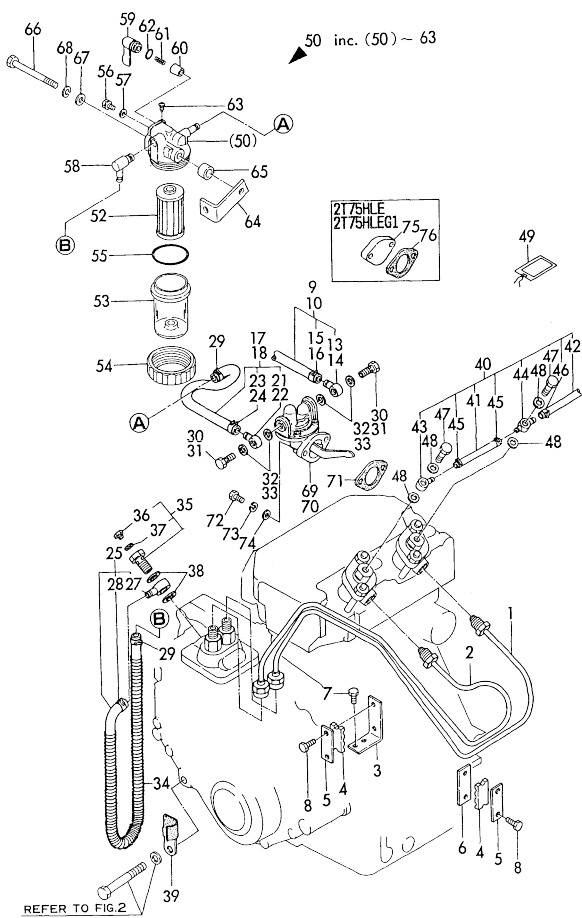


No.	Lev.	Parts No.	Description	Q'ty						I	R
				(A)	(B)	(C)	(D)	(E)	(F)		
1	1	124500-59810	PIPE ASSY, INJECTION	1	1	1	1				
2	1	124500-59820	PIPE ASSY, INJECTION	1	1	1	1				
3	1	121450-59850	BRACKET	1	1	1	1				
4	1	123325-59100	RETAINER, PIPE	2	2						
4-1	1	123325-59100	RETAINER, PIPE	1	1	1	1				K
				(A=E# 98379)		(B=E# 97968)					
5	1	123325-59110	COVER	2	2						
5-1	1	123325-59110	COVER	1	1	1	1				K
				(A=E# 98379)		(B=E# 97968)					
6	1	121250-59860	BRACKET	1	1						Z
				(A=EXXX)		(B=EXXX)					
7	1	26116-060102	BOLT, M6X 10 PLATED	2	2	2	2				
8	1	26116-060162	BOLT, M6X 16 PLATED	4	4						
8-1	1	121465-59950	BOLT, M6X16	2	2	2	2				N
				(A=E# 98379)		(B=E# 97968)					
9	1	121000-59010	PIPE ASSY, FUEL	1			1				Z
10	1	121000-59010	PIPE ASSY, FUEL	1							Z
				(A=EXXX)							
13	2	104264-59030	JOINT, PIPE 8		1		1				Z
14	2	104264-59030	JOINT, PIPE 8		1						Z
				(A=EXXX)							
15	2	124766-59050	CLIP, HOSE 12		1		1				Z
16	2	124766-59050	CLIP, HOSE 12		1						Z
				(A=EXXX)							
17	1	124000-59020	PIPE ASSY, FUEL	1			1				Z
18	1	124000-59020	PIPE ASSY, FUEL	1							Z
				(A=EXXX)							
21	2	104264-59030	JOINT, PIPE 8		1		1				Z
22	2	104264-59030	JOINT, PIPE 8		1						Z
				(A=EXXX)							
23	2	124766-59050	CLIP, HOSE 12		1		1				Z
24	2	124766-59050	CLIP, HOSE 12		1						Z
				(A=EXXX)							
25	1	121462-59010	PIPE ASSY, FUEL	1	1						N
25-1	1	121462-59011	PIPE ASSY, FUEL	1	1	1	1				N
				(A=E# 98379)		(B=E# 97968)					
27	2	124250-59260	JOINT, PIPE 12	1	1						N
27-1	2	101304-59020	JOINT, PIPE 12	1	1	1	1				N
				(A=E# A1908)		(B=E# A1869)					
28	2	124766-59050	CLIP, HOSE 12	1	1	1	1				
29	1	124766-59050	CLIP, HOSE 12	2	2	2	2				
30	1	105582-59150	BOLT, PIPE JOINT	2	2	2	2				
31	1	105582-59150	BOLT, PIPE JOINT	2							Z
				(A=EXXX)							
32	1	23414-080012	GASKET, 8X1.0		4		4				Z
33	1	23414-080012	GASKET, 8X1.0		4						Z
				(A=EXXX)							
34	1	106100-59060	SPRING, PROTECTE	1	1	1	1				
35	1	103854-59191	BOLT ASSY, JOINT M12	1	1	1	1				W
				(A=E# 98379)		(B=E# 97968)					
36	2	124060-59380	PLUG, 6	1	1	1	1				

N:Old $\frac{New}{Old}$ New, Q:Old $\frac{New}{Old}$ New, R:Old $\frac{New}{Old}$ New, S:Old $\frac{New}{Old}$ New, W:Add, Z:Discontinued, F:Interchangeable by set, K:Q'ty Change
 ++ CONTINUE ++
 Copyright (C) YANMAR CO., LTD. All Rights Reserved.

Fig.17. FUEL SYSTEM

Fig.17 FUEL SYSTEM



(A)=2T75HLE
(B)=2T75HLE-S
(C)=2T75HLEG1

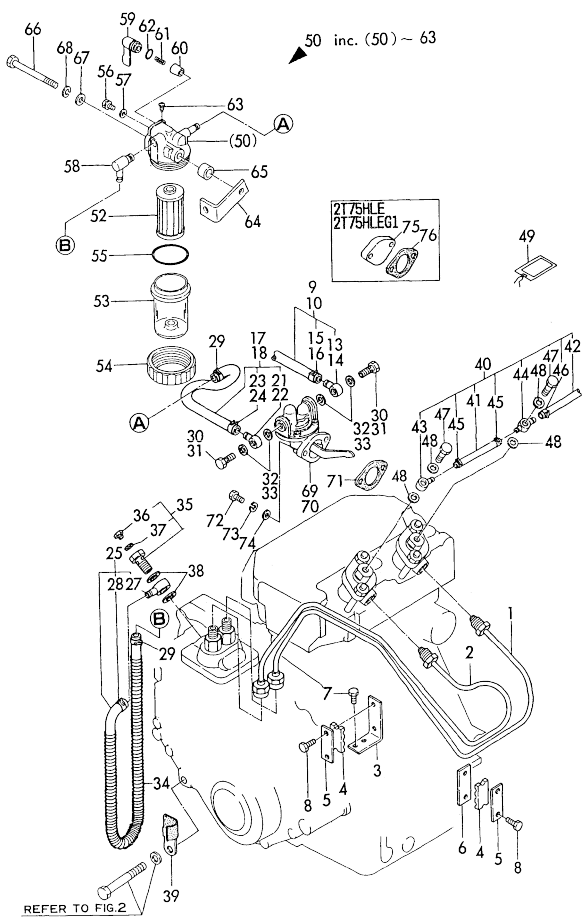
(D)=2T75HLEG1-S
(E)=
(F)=

No.	Lev.	Parts No.	Description	Q'ty						I	R
				(A)	(B)	(C)	(D)	(E)	(F)		
37	2	43400-500390	SEAL WASHER 6	1	1	1	1				
38	1	104200-59170	GASKET, 12	2	2	2	2				
39	1	121000-59920	CLAMP, PIPE	1	1						
39-1	1	124160-01650	CLAMP, PIPE	1	1	1	1				N
		(A=E# A1612) (B=E# A1679)									
40	1	124000-59500	PIPE ASSY, RETURN	1	1	1	1				
41	2	121450-59500	PIPE ASSY, RETURN	1	1	1	1				
42	2	124736-77700	PIPE, FUEL	1	1	1	1				
43	2	121750-59090	JOINT, PIPE 8	1	1	1	1				
44	2	124550-59030	JOINT, PIPE 8	1	1	1	1				
45	2	124066-59100	CLIP, HOSE 8	2	2	2	2				
46	2	124060-77680	CLIP, HOSE 10	1	1	1	1				
47	1	101147-59810	BOLT, PIPE JOINT M8	2	2	2	2				
48	1	23414-080012	GASKET, 8X1.0	4	4	4	4				
49	1	126630-07350	LABEL, DRAIN COCK	1	1						W
		(A=E# 98379) (B=E# 97968)									
49-1	1	123682-07850	LABEL, CAUTION	1	1	1	1				N
		(A=E# 98379) (B=E# 97968)									
50	1	121027-55600	FILTER ASSY, FUEL	1	1	1	1				
52	2	104500-55710	ELEMENT	1	1	1	1				
53	2	104500-55510	CUP	1	1	1	1				
54	2	110250-55610	RING, RETAINING	1	1	1	1				
55	2	102103-55520	O-RING	1	1	1	1				
56	2	101720-55750	PLUG, 6	2	2	2	2				
57	2	23418-060000	GASKET, 6X1.0	2	2	2	2				
58	2	106152-55730	JOINT	1	1	1	1				
59	2	104200-55341	HANDLE	1	1	1	1				
60	2	104200-55321	VALVE, TAPER	1	1	1	1				
61	2	104200-55330	SPRING, VALVE	1	1	1	1				
62	2	24311-240100	O-RING, 1AP10A	1	1	1	1				
63	2	104200-55750	SCREW, M4	1	1	1	1				
64	1	171008-55612	BRACKET, STRAINER	1	1	1	1				
65	1	124060-44710	SPACER	1	1	1	1				
66	1	26116-080752	BOLT, M8X 75 PLATED	1	1						
66-1	1	26106-080602	BOLT, M8X 60 PLATED	1	1	1	1				N
		(A=E# 98379) (B=E# 98122)									
67	1	22117-080000	WASHER, 8	1	1						Z
		(A=E-XXXX) (B=E-XXXX)									
68	1	22217-080000	WASHER, SPRING 8	1	1						Z
		(A=E-XXXX) (B=E-XXXX)									
69	1	121256-52020	PUMP ASSY, FUEL FEED			1	1				Z
70	1	121256-52020	PUMP ASSY, FUEL FEED	1							Z
		(A=E-XXXX)									
71	1	121400-01850	GASKET	1	1						
71-1	1	121520-01850	GASKET	1	1						R
		(A=E# 98379) (B=E# 97968)									
71-2	1	121520-01850	GASKET		1		1				N
		(B=E# A1869)									
72	1	26116-060182	BOLT, M6X 18 PLATED	2	2						
72A-1	1	26014-060182	BOLT, M6X 18		2		2				N
		(B=E# 97968)									

N:Old $\frac{100}{100}$ New, Q:Old $\frac{100}{100}$ New, R:Old $\frac{100}{100}$ New, S:Old $\frac{100}{100}$ New, W:Add, Z:Discontinued, F:Interchangeable by set, K:Q'ty Change
 ++ CONTINUE ++
 Copyright (C) YANMAR CO., LTD. All Rights Reserved.

Fig.17. FUEL SYSTEM

Fig. 17 FUEL SYSTEM



(A)=2T75HLE
(B)=2T75HLE-S
(C)=2T75HLEG1

(D)=2T75HLEG1-S
(E)=
(F)=

No.	Lev.	Parts No.	Description	Q'ty						I	R
				(A)	(B)	(C)	(D)	(E)	(F)		
72B-1	1	26106-060142	BOLT, M6X 14 PLATED	2		2					N
		(A=E# 98379)									
73	1	22117-060000	WASHER, 6	2	2						Z
		(A=E-XXXX) (B=E-XXXX)									
74	1	22217-060000	WASHER, SPRING 6	2	2						Z
		(A=E-XXXX) (B=E-XXXX)									
75	1	121520-01860	COVER	1		1					
76	1	121520-01851	GASKET	1		1					W
		(A=E# A1908)									

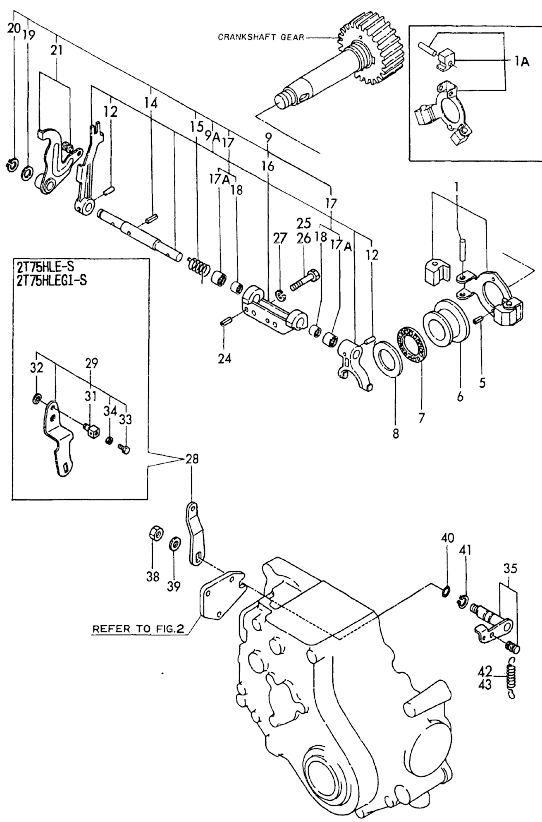
N:Old $\frac{New}{Old}$ New, Q:Old $\frac{New}{Old}$ New, R:Old $\frac{New}{Old}$ New, S:Old $\frac{New}{Old}$ New, W:Add, Z:Discontinued, F:Interchangeable by set, K:Q'ty Change
Copyright (C) YANMAR CO., LTD. All Rights Reserved.

Fig.18. GOVERNOR

(A)=2T75HLE
(B)=2T75HLE-S
(C)=2T75HLEG1

(D)=2T75HLEG1-S
(E)=
(F)=

Fig.18 GOVERNOR



No.	Lev.	Parts No.	Description	Q'ty						I	R
				(A)	(B)	(C)	(D)	(E)	(F)		
1	1	121000-61100	WEIGHT ASSY,GOVERNOR	1	1						
1-1	1	121000-61101	WEIGHT ASSY,GOVERNOR	1	1						N
		(A=E# 98379) (B=E# 97968)									
1A	1	171016-61100	WEIGHT, GOVERNOR				1	1			
5	1	22351-040008	PIN, SPRING 4.0X 8	2	2						
5-1	1	22312-040008	PARALLEL PIN 4X 0.8	2	2	2	2				N
		(A=E# 98379) (B=E# 97968)									
6	1	121000-61600	SLEEVE, GOVERNOR	1	1	1	1				
7	1	121575-61710	BEARING, FNTA-2542	1	1	1	1				
8	1	121575-61720	COLLAR	1	1	1	1				
9	1	721500-61560	LEVER ASSY, GOVERNOR	1	1						
9-1	1	721500-61561	LEVER ASSY, GOVERNOR	1	1						F 1
		(A=E# 98379) (B=E# 97968)									
9-2	1	121500-61001	LEVER ASSY, GOVERNOR	1	1	1	1				N
		(A=E# 98379) (B=E# 97968)									
9A	2	121000-61010	SHAFT	1	1	1	1				W
		(A=E# 98379) (B=E# 97968)									
12	3	22322-030200	PIN, TAPER 3X20	2	2	2	2				
14	2	22351-030012	PIN, SPRING 3.0X12	1	1	1	1				
15	2	121575-66310	SPRING, STARTING	1	1	1	1				
16	2	121575-61620	SUPPORT	1	1						
16-1	2	121000-61620	SUPPORT	1	1	1	1				S
		(A=E# 98379) (B=E# 97968)									
17	2	122410-61650	BEARING, FJ-1010W	2	2						
17-1	2	121520-61520	BEARING, NEEDLE	2	2	2	2				N
		(A=E# 98379) (B=E# 97968)									
17A	3	121520-61530	BEARING	2	2	2	2				W 1
		(A=E# 98379) (B=E# 97968)									
18	3	121000-61660	BEARING	2	2						W 1
		(A=E# 98379) (B=E# 97968)									
18-1	3	121520-61540	BEARING	2	2	2	2				S
		(A=E# 98379) (B=E# 97968)									
19	2	104211-42130	PIECE, DISTANCE	1	1						
19-1	2	121000-61180	WASHER	1	1	1	1				N
		(A=E# 98379) (B=E# 97968)									
20	1	22242-000100	RING, 10	1	1						
20-1	2	121000-61190	CIRCLIP	1	1	1	1				N
		(A=E# 98379) (B=E# 97968)									
21	2	121575-61160	LEVER ASSY, CONTROL	1	1						
21-1	2	121000-61160	LEVER ASSY, CONTROL	1	1	1	1				N
		(A=E# 98379) (B=E# 97968)									
24	1	22351-040008	PIN, SPRING 4.0X 8	2	2	2	2				
25	1	26116-060302	BOLT, M6X 30 PLATED	2	2						
25-1	1	26013-060302	BOLT, M6X 30	2	2						N
		(A=E# 98379) (B=E# 97968)									
26	1	26106-060302	BOLT, M6X 30 PLATED				2	2			
27	1	22217-060000	WASHER, SPRING 6	2	2						Z
		(A=E# 98379) (B=E# 97968)									
28	1	121575-66051	HANDLE, REGULATOR	1	1	1	1				W
		(B=E# A0570)									
29	1	121005-66000	HANDLE ASSY			1					Z

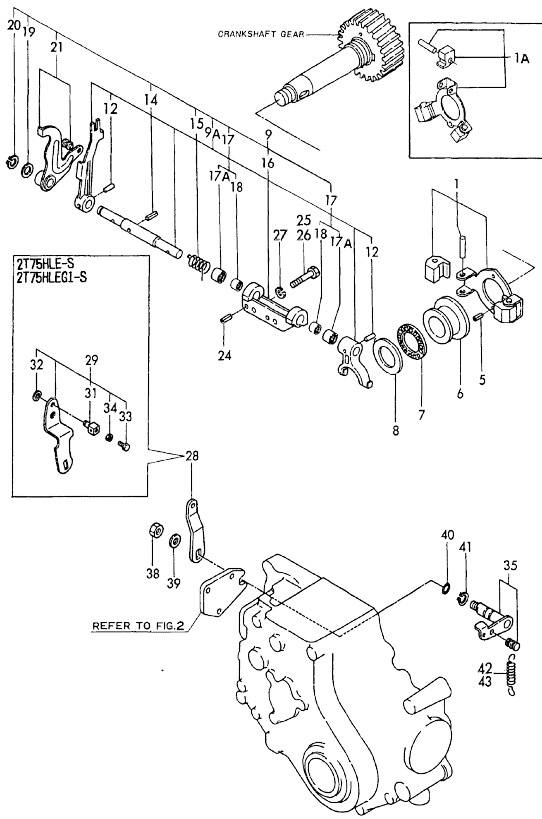
Remarks
(1) INTERCHANGEABLE BY SIMULTANEOUS REPLACEMENT WITH NO.9-1,17A AND 18.

N:Old $\frac{100}{100}$ New, Q:Old $\frac{100}{100}$ New, R:Old $\frac{100}{100}$ New, S:Old $\frac{100}{100}$ New, W:Add, Z:Discontinued, F:Interchangeable by set, K:Q'ty Change
++ CONTINUE ++
Copyright (C) YANMAR CO., LTD. All Rights Reserved.

(A)=2T75HLE
 (B)=2T75HLE-S
 (C)=2T75HLEG1

(D)=2T75HLEG1-S
 (E)=
 (F)=

Fig. 18 GOVERNOR



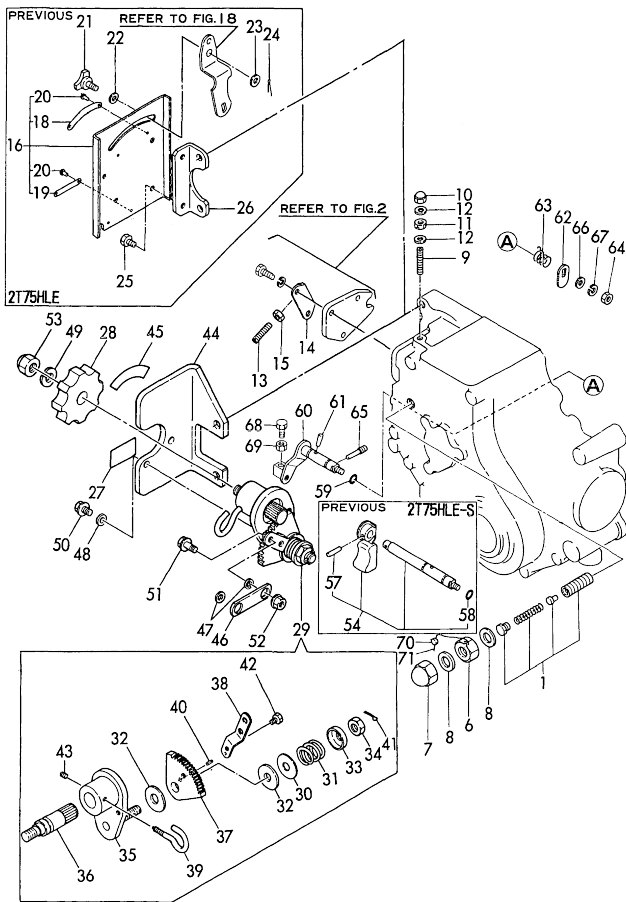
No.	Lev.	Parts No.	Description	Q'ty						I	R
				(A)	(B)	(C)	(D)	(E)	(F)		
31	2	124756-67510	(B=EXXX) RETAINER		1						Z
32	2	22272-000070	(B=EXXX) RING, E- 7		1						Z
33	2	26116-040148	(B=EXXX) BOLT M 4X 14		1						Z
34	2	26756-040002	(B=EXXX) NUT, LOCK M4		1						Z
35	1	121000-66090	LEVER ASSY,REGULATOR	1	1	1	1				
38	1	26116-080002	NUT M 8	1	1						
38-1	1	26366-080002	NUT, M8	1	1	1	1				N
39	1	22117-080000	(A=E/# 98379) (B=E/# 97968) WASHER, 8	1	1	1	1				Z
40	1	24311-000090	(A=EXXX) O-RING, 1AP9.0	1	1	1	1				
41	1	22242-000120	RING, 12	1	1	1	1				
42	1	121000-66011	SPRING, REGULATOR	1	1						
43	1	171016-66010	SPRING, REGULATOR			1	1				

Remarks
 (1) INTERCHANGEABLE BY SIMULTANEOUS
 REPLACEMENT WITH NO.9-1,17A AND
 18.

Fig.19. CONTROLLER DEVICE

(A)=2T75HLE
(D)=2T75HLEG1-S
(B)=2T75HLE-S
(E)=
(C)=2T75HLEG1
(F)=

Fig. 19 CONTROL DEVICE



No.	Lev.	Parts No.	Description	Qty						I	R
				(A)	(B)	(C)	(D)	(E)	(F)		
1	1	121500-66550	LIMITER ASSY, FUEL	1	1						
1-1	1	121500-66551	LIMITER ASSY, FUEL	1	1						S
		(A=E# 98379) (B=E# 97968)									
1-2	1	171004-66550	LIMITER ASSY, FUEL	1	1	1	1				N
		(A=E# 98379) (B=E# 98166)									
6	1	121000-66600	NUT	1	1						
6-1	1	26776-120002	NUT, LOCK M12	1	1	1	1				S
		(A=E# 98379) (B=E# 97968)									
7	1	26686-140002	NUT, CAP M14	1	1						
7A-1	1	26686-120002	NUT, CAP M12	1	1		1				N
		(B=E# 97968)									
7B-1	1	26687-120002	NUT, CAP M12	1	1						N
		(A=E# 98379)									
8	1	43400-500470	SEAL WASHER 14	2	2	2	2				
8-1	1	43400-500450	SEAL WASHER 12	2	2	2	2				S
		(A=E# 98379) (B=E# 97968)									
9	1	121575-66830	SCREW	1	1						
9-1	1	121575-66800	SCREW	1	1	1	1				N
		(A=E# 98379) (B=E# 98595)									
10	1	26666-060002	NUT, CAP M6	1	1	1	1				
11	1	124550-66370	NUT, M6	1	1	1	1				
12	1	43400-500400	SEAL WASHER 6	2	2	2	2				
13	1	121575-66800	SCREW	1	1	1	1				W
		(B=E-XXX)									
14	1	121575-66850	RETAINER	1	1	1	1				W
		(B=E-XXX)									
15	1	26756-060002	NUT, LOCK M6	1	1	1	1				W
		(B=E-XXX)									
16	1	121005-66190	BRACKET		1						Z
		(B=E-XXX)									
18	2	121005-66130	LEBEL, INDICATION		1						Z
		(B=E-XXX)									
19	2	121005-66140	LABEL, STOP		1						Z
		(B=E-XXX)									
20	2	22625-140040	RIVET 1.4X 4		4						Z
		(B=E-XXX)									
21	1	101158-66210	KNOB		1						Z
		(B=E-XXX)									
22	1	22137-080000	WASHER, 8		1						Z
		(B=E-XXX)									
23	1	22117-060000	WASHER, 6		1						Z
		(B=E-XXX)									
24	1	22417-120100	PIN, COTTER 1.2X10		1						Z
		(B=E-XXX)									
25	1	26116-060102	BOLT, M6X 10 PLATED		4						Z
		(B=E-XXX)									
26	1	121005-66110	BRACKET, RADIATOR		1						Z
		(B=E-XXX)									
27	1	171010-65100	LABEL		1	1					W
		(B=E# A0570)									
28	1	126650-66020	HANDLE, REGULATOR		1	1					W

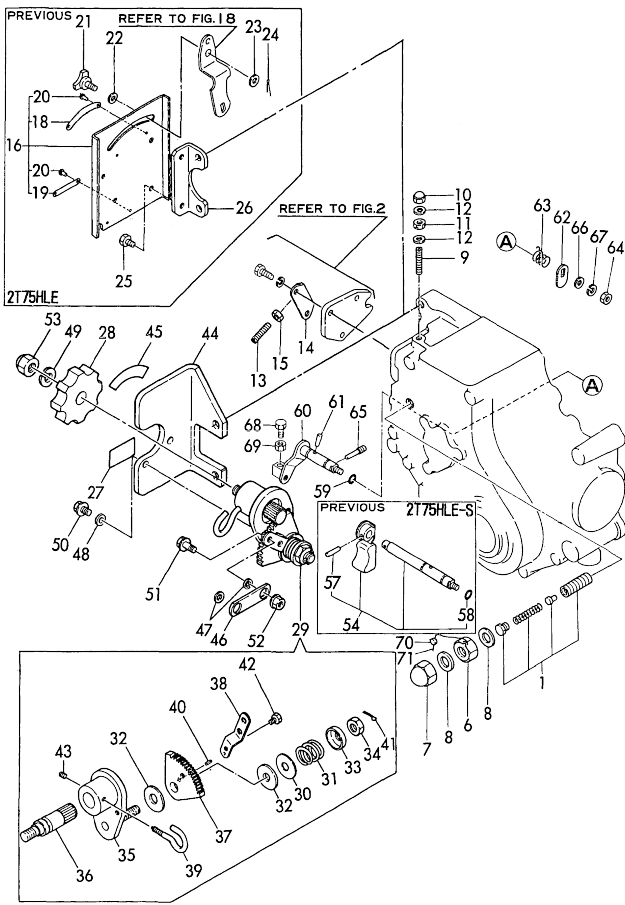
N:Old $\frac{100}{100}$ New, Q:Old $\frac{100}{100}$ New, R:Old $\frac{100}{100}$ New, S:Old $\frac{100}{100}$ New, W:Add, Z:Discontinued, F:Interchangeable by set, K:Qty Change
 ++ CONTINUE ++
 Copyright (C) YANMAR CO., LTD. All Rights Reserved.

Fig.19. CONTROLLER DEVICE

(A)=2T75HLE
(B)=2T75HLE-S
(C)=2T75HLEG1

(D)=2T75HLEG1-S
(E)=
(F)=

Fig. 19 CONTROL DEVICE



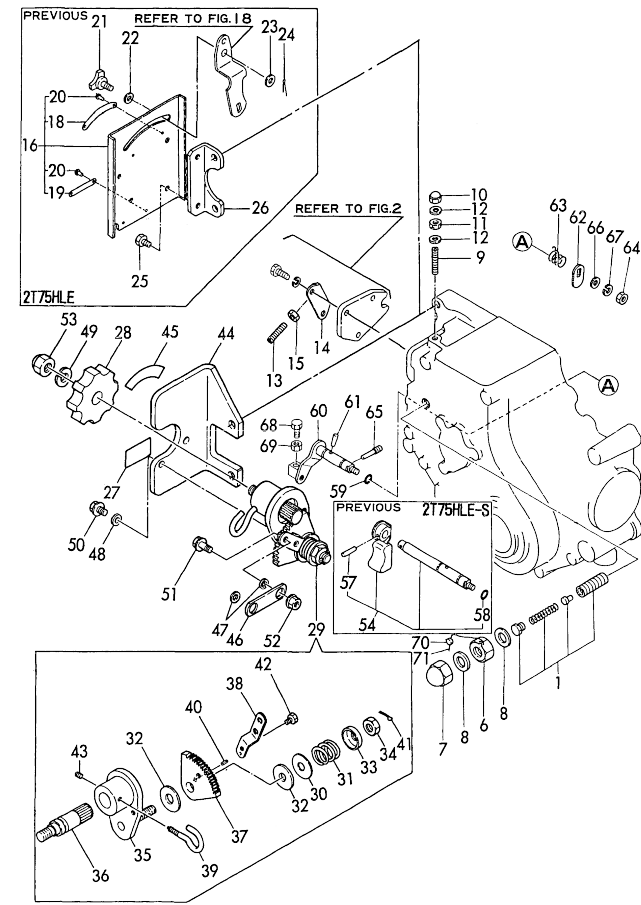
No.	Lev.	Parts No.	Description	Qty						I	R
				(A)	(B)	(C)	(D)	(E)	(F)		
			(B=E# A0570)								
29	1	171048-67010	CONTROLLER ASSY	1	1						W
			(B=E# A0570)								
30	2	171102-66080	WASHER	1	1						W
			(B=E# A0570)								
31	2	104200-66820	SPRING	1	1						W
			(B=E# A0570)								
32	2	104200-66830	PLATE, FRICTION	2	2						W
			(B=E# A0570)								
33	2	104200-66850	WASHER	1	1						W
			(B=E# A0570)								
34	2	104200-66860	NUT	1	1						W
			(B=E# A0570)								
35	2	171085-67100	BRACKET	1	1						W
			(B=E# A0570)								
36	2	171085-67110	SHAFT, DRIVE	1	1						W
			(B=E# A0570)								
37	2	171085-67120	GEAR	1	1						W
			(B=E# A0570)								
38	2	171048-67130	LEVER	1	1						W
			(B=E# A0570)								
39	2	171048-67140	STOPPER	1	1						W
			(B=E# A1869)								
40	2	22351-020006	PIN, SPRING 2.0X 6	1	1						W
			(B=E# A0570)								
41	2	22411-200150	COTTER PIN 2.0X 15	1	1						W
			(B=E# A0570)								
42	2	26116-060082	BOLT, M6X 8 PLATED	1	1						W
			(B=E# A0570)								
43	2	26921-050122	SCREW, M5X12	1	1						W
			(B=E# A1868)								
44	1	171084-67200	SUPPORT	1	1						W
			(B=E# A0570)								
45	1	170064-67210	LABEL, HANDLE	1	1						W
			(B=E# A0570)								
46	1	171084-67210	LINK	1	1						W
			(B=E# A0570)								
47	1	171084-67220	COLLAR	2	2						W
			(B=E# A0570)								
48	1	22117-100000	WASHER, 10	1	1						W
			(B=E# A0570)								
49	1	22217-100000	WASHER, SPRING 10	1	1						W
			(B=E# A0570)								
50	1	26106-060102	BOLT, M6X 10 PLATED	2	2						W
			(B=E# A0570)								
51	1	26106-060142	BOLT, M6X 14 PLATED	2	2						W
			(B=E# A0570)								
52	1	26366-060002	NUT, M6	2	2						W
			(B=E# A0570)								
53	1	26657-100002	NUT, CAP M10	1	1						W
			(B=E# A0570)								

N:Old $\frac{100}{100}$ New, Q:Old $\frac{100}{100}$ New, R:Old $\frac{100}{100}$ New, S:Old $\frac{100}{100}$ New, W:Add, Z:Discontinued, F:Interchangeable by set, K:Qty Change
 ++ CONTINUE ++
 Copyright (C) YANMAR CO., LTD. All Rights Reserved.

Fig.19. CONTROLLER DEVICE

(A)=2T75HLE
(B)=2T75HLE-S
(C)=2T75HLEG1
(D)=2T75HLEG1-S
(E)=
(F)=

Fig. 19 CONTROL DEVICE



No.	Lev.	Parts No.	Description	Q'ty						I	R
				(A)	(B)	(C)	(D)	(E)	(F)		
54	1	121005-66500	LEVER ASSY, STOP		1						
54-1	1	121575-66520 (B=E# A0570)	LEVER, STOP		1		1				N
57	2	22322-030180 (B=E-XXXX)	PIN, TAPER 3X18			1					Z
58	2	24311-000070 (B=E-XXXX)	O-RING, 1AP7.0			1					Z
59	1	24311-000070 (B=E# A0570)	O-RING, 1AP7.0		1	1	1	1			W
60	1	121575-66510	LEVER ASSY, STOP		1		1				
61	1	22322-030160	PIN, TAPER 3X16		1	1	1	1			
62	1	121575-66550	CAM		1	1	1	1			
63	1	121575-66580	SPRING, RETURN		1	1	1	1			
64	1	26716-060002	NUT, M6		1	1	1				
64-1	1	26366-060002 (B=E# A0570)	NUT, M6			1		1			N
65	1	124250-03640	SCREW		1	1	1	1			
66	1	22117-060000 (B=E-XXXX)	WASHER, 6		1	1	1				Z
67	1	22217-060000 (B=E-XXXX)	WASHER, SPRING 6		1	1	1				Z
68	1	26116-050128 (A=E# 98379)	BOLT, M5X 12 PLATED		1		1				W
69	1	26756-050002 (A=E# 98379)	NUT, LOCK M5		1		1				W
70	1	135210-61090 (A=E-XXXX)	LEAD		1		1				W
71	1	22451-060000 (A=E# 98379)	WIRE, 0.6		1		1				W

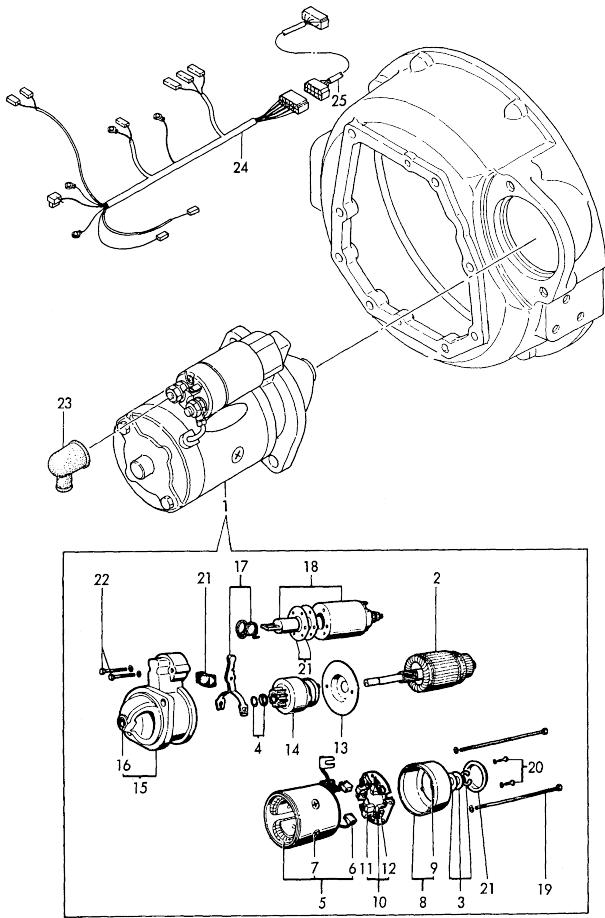
N:Old $\frac{100}{100}$ New. Q:Old $\frac{100}{100}$ New. R:Old $\frac{100}{100}$ New. S:Old $\frac{100}{100}$ New. W:Add. Z:Discontinued. F:Interchangeable by set. K:Q'ty Change
Copyright (C) YANMAR CO., LTD. All Rights Reserved.

Fig.20. STARTING MOTOR

(A)=2T75HLE
(B)=2T75HLE-S
(C)=2T75HLEG1

(D)=2T75HLEG1-S
(E)=
(F)=

Fig.20 STARTING MOTOR

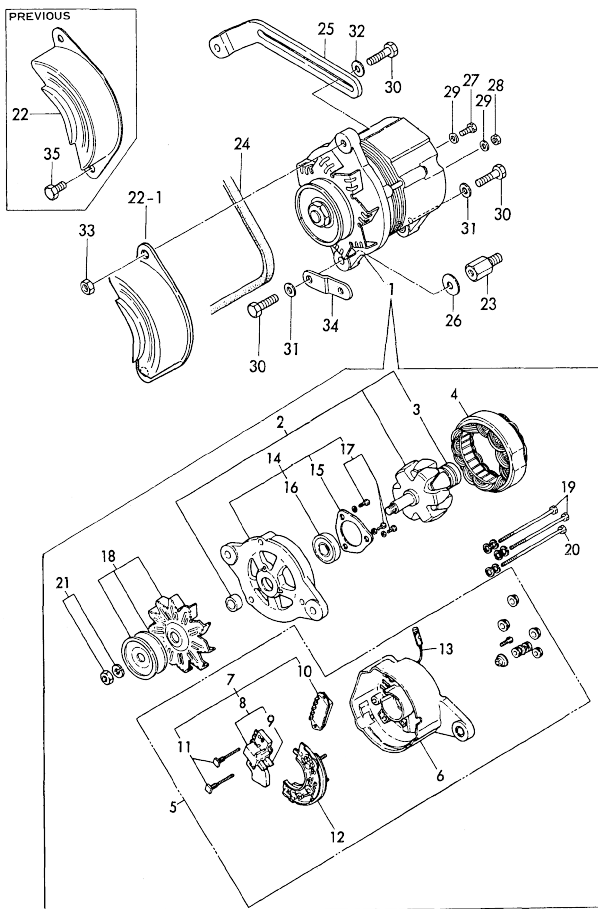


No.	Lev.	Parts No.	Description	Q'ty						I	R
				(A)	(B)	(C)	(D)	(E)	(F)		
1	1	124450-77010	STARTER, S114-146	1	1	1	1				
2	2	X211491001	ARMATURE ASSY	1	1	1	1				
3	2	X21148110	WASHER SET, THRUST	1	1	1	1				
4	2	X21147155	STOPPER SET, PINION	1	1	1	1				
5	2	X211482001	COIL ASSY, FIELD	1	1	1	1				
6	3	X21145312	BRUSH, +	2	2	2	2				
7	3	X21147215	SCREW, POLE CORE	4	4	4	4				
8	2	X211423001	COVER ASSY, REAR	1	1	1	1				
9	3	X21145352	METAL	1	1	1	1				
10	2	X21141360	HOLDER ASSY, BRUSH	1	1	1	1				
11	3	X21145313	BRUSH (-)	2	2	2	2				
12	3	X21145314	SPRING	4	4	4	4				
13	2	X21143454	PLATE, CENTER	1	1	1	1				
14	2	X211445002	PINION ASSY	1	1	1	1				
15	2	X211486003	HOUSING ASSY, GEARS	1	1	1	1				
16	3	X21145661	METAL, GEAR CASE	1	1	1	1				
17	2	X21148652	LEVER SET, SHIFT	1	1	1	1				
18	2	X211457001	SWITCH, MAGNETIC	1	1	1	1				
19	2	X21146815	BOLT, THROUGH	2	2	2	2				
20	2	26557-040122	SCREW, M4X12	2	2	2	2				
21	2	X21143963	COVER KIT, DUCT	1	1	1	1				
22	2	26116-060322	BOLT, M6X 32 PLATED	2	2	2	2				
23	1	124550-77030	COVER, TERMINAL	1	1	1	1				
24	1	121005-77910	HARNESS, WIRE	1	1	1	1				
25	1	121100-77920	CORD, EXTENSION	1	1	1	1				

(A)=2T75HLE
 (B)=2T75HLE-S
 (C)=2T75HLEG1

(D)=2T75HLEG1-S
 (E)=
 (F)=

Fig. 21 GENERATOR



No.	Lev.	Parts No.	Description	Qty						I	R
				(A)	(B)	(C)	(D)	(E)	(F)		
1	1	121400-77200	GENERATOR, 12V-20A	1	1						
1-1	1	121400-77201	GENERATOR, LR120-15C	1	1	1	1				R
		(A=E# 98379) (B=E# 97968)									
2	2	XL12031001	ROTOR ASSY	1	1	1	1				
3	3	124080-77490	BALL BEARING	1	1	1	1				
4	2	XL1209200	STATOR ASSY	1	1	1	1				
5	2	124080-77330	COVER ASSY	1	1	1	1				
6	3	124080-77340	COVER, REAR	1	1	1	1				
7	3	124080-77350	BRUSH ASSY,REGULATOR	1	1	1	1				
8	4	124080-77360	BRUSH ASSY	1	1	1	1				
9	4	124080-77380	BRUSH	2	2	2	2				
10	4	124080-77390	REGULATOR ASSY	1	1	1	1				
11	4	124080-77520	BOLT M5	2	2	2	2				
12	3	124080-77400	DIODE ASSY	1	1	1	1				
13	3	124080-77530	WIRE ASSY, LEAD	1	1	1	1				
14	2	124080-77420	COVER ASSY	1	1	1	1				
15	3	124080-77430	RETAINER, BEARING	1	1	1	1				
16	3	124080-77480	BEARING, 6202DDU	1	1	1	1				
17	3	124080-77500	SCREW KIT	1	1	1	1				
18	2	124080-77440	PULLEY ASSY	1	1	1	1				
19	2	124080-77450	BOLT, THROUGH	2	2	2	2				
20	2	124080-77460	BOLT, THROUGH	1	1	1	1				
21	2	124080-77470	NUT ASSY, PULLEY	1	1	1	1				
22	1	121250-77210	COVER, GENERATOR	1	1						
22-1	1	129795-77210	COVER	1	1	1	1				N
		(A=E# 98379) (B=E# 97968)									
23	1	121000-77250	SPACER, GENERATOR	1	1						
23-1	1	121000-77251	SPACER, GENERATOR	1	1	1	1				N
		(A=E# 98379) (B=E# 97968)									
24	1	124001-42290	V-BELT, 36	1	1	1	1				
25	1	121000-77332	ADJUSTER	1	1						
25-1	1	171054-77330	ADJUSTER	1	1	1	1				R
		(A=E# 98379) (B=E# 97968)									
26	1	124250-77390	SHIM	1	1						Z
		(A=E-XXXX) (B=E-XXXX)									
27	1	26116-050102	BOLT, M5X 10 PLATED	1			1				
28	1	26716-050002	NUT, M5	1			1				
29	1	22117-050000	WASHER, 5				2				
30	1	26116-080302	BOLT, M8X 30 PLATED	3	3						
30-1	1	26014-080352	BOLT, M8X 35	3	3	3	3				N
		(A=E# 98379) (B=E# 97968)									
31	1	22117-080000	WASHER, 8	2	2						Z
		(A=E-XXXX) (B=E-XXXX)									
32	1	22137-080000	WASHER, 8	1	1						Z
		(A=E-XXXX) (B=E-XXXX)									
33	1	26756-080002	NUT, LOCK M8	1	1						
33-1	1	26366-080002	NUT, M8	1	1	1	1				N
		(A=E# 98379) (B=E# 97968)									
34	1	121000-77220	SUPPORT	1	1						Z
		(A=E# 98379) (B=E# 97968)									
35	1	26116-080162	BOLT, M8X 16 PLATED	1	1						Z

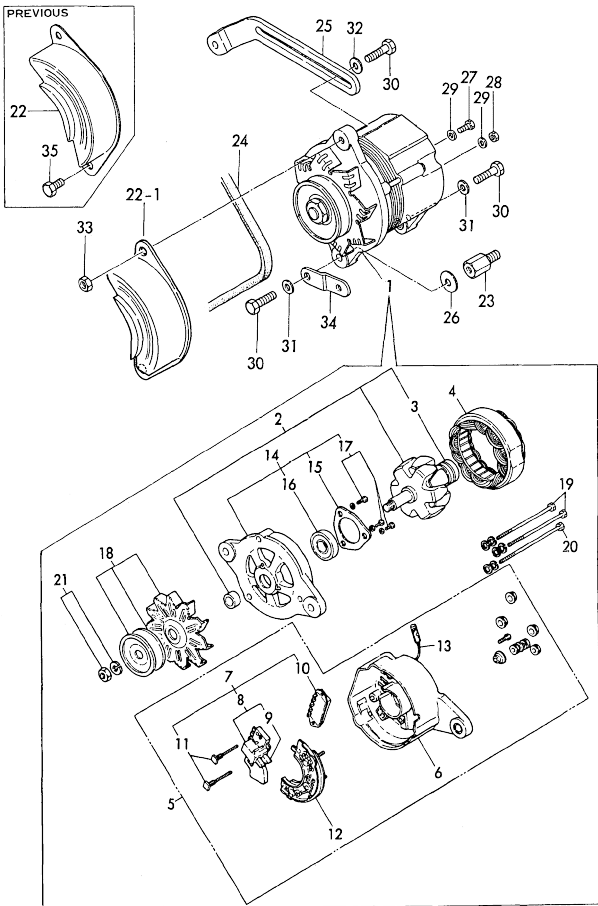
N:Old $\frac{New}{Old}$ New, Q:Old $\frac{New}{Old}$ New, R:Old $\frac{New}{Old}$ New, S:Old $\frac{New}{Old}$ New, W:Add, Z:Discontinued, F:Interchangeable by set, K:Qty Change
 ++ CONTINUE ++
 Copyright (C) YANMAR CO., LTD. All Rights Reserved.

Fig.21. GENERATOR

(A)=2T75HLE
(B)=2T75HLE-S
(C)=2T75HLEG1

(D)=2T75HLEG1-S
(E)=
(F)=

Fig. 21 GENERATOR



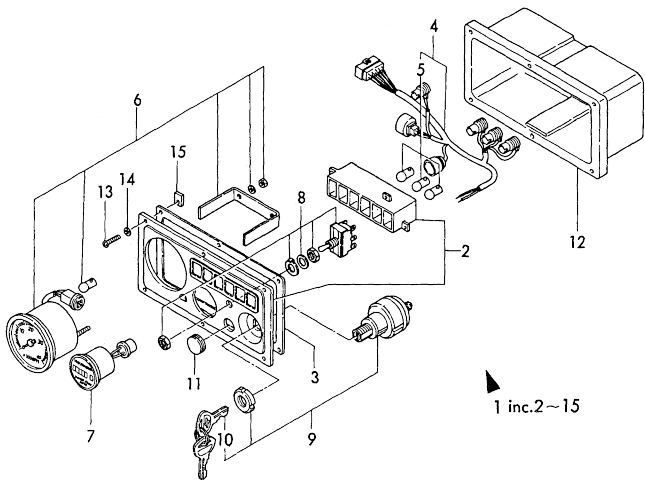
No.	Lev.	Parts No.	Description	Qty						I	R
				(A)	(B)	(C)	(D)	(E)	(F)		
(A=E# 98379)		(B=E# 97968)									

N:Old $\frac{100}{100}$ New, Q:Old $\frac{100}{100}$ New, R:Old $\frac{100}{100}$ New, S:Old $\frac{100}{100}$ New, W:Add, Z:Discontinued, F:Interchangeable by set, K:Qty Change
Copyright (C) YANMAR CO., LTD. All Rights Reserved.

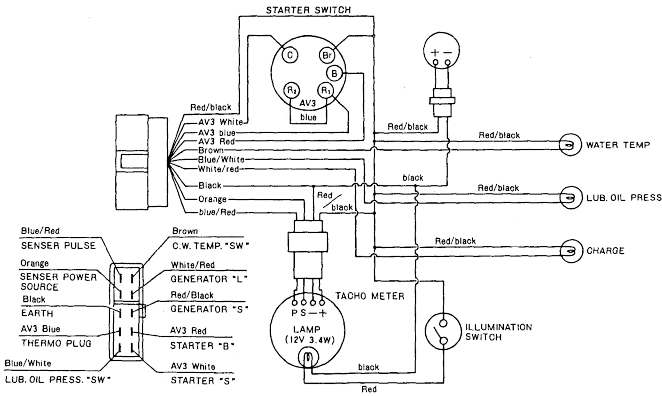
Fig.22. INSTRUMENT PANEL

(A)=2T75HLE
(D)=2T75HLEG1-S
(B)=2T75HLE-S
(E)=
(C)=2T75HLEG1
(F)=

Fig.22 INSTRUMENT PANEL



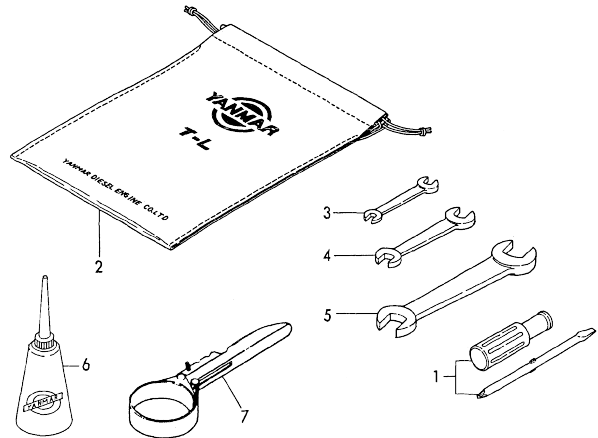
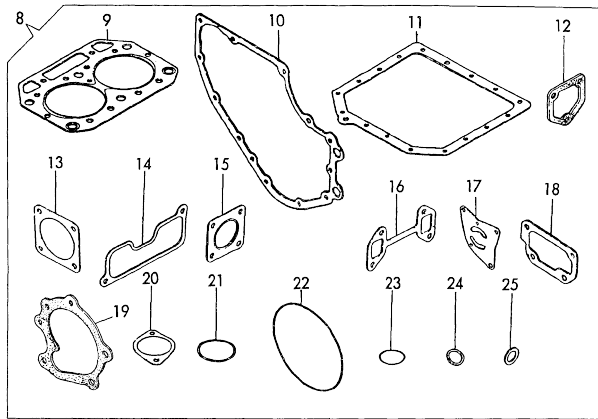
No.	Lev.	Parts No.	Description	Q'ty					
				(A)	(B)	(C)	(D)	(E)	(F)
1	1	121100-91011	PANEL ASSY	1					
2	2	121100-91050	BODY, PANEL		1				
3	2	128170-91020	GASKET			1			
4	2	121100-91030	HARNESS, WIRE		1				
5	3	46150-001110	BULB(12V3W/G11.BA9S)			3			
6	2	121100-91101	TACHOMETER		1				
7	2	121100-91110	METER, HOUR		1				
8	2	121100-91120	SWITCH		1				
9	2	121400-91251	SWITCH, STARTER		1				
10	3	121400-91271	KEY, SWITCH		1				
11	2	121100-91060	PLUG		1				
12	2	121100-91070	BOX		1				
13	2	128170-91810	SCREW, M5X35		6				
14	2	128170-91820	WASHER, 5		6				
15	2	128170-91830	NUT, M5		6				



N:Old $\frac{100}{100}$ New, Q:Old $\frac{100}{100}$ New, R:Old $\frac{100}{100}$ New, S:Old $\frac{100}{100}$ New, W:Add, Z:Discontinued, F:Interchangeable by set, K:Q'ty Change
Copyright (C) YANMAR CO., LTD. All Rights Reserved.

Fig.23. GASKET SET(OPTIONAL) & TOOL

Fig.23 GASKET SET (OPTIONAL) & TOOL



(A)=2T75HLE
(B)=2T75HLE-S
(C)=2T75HLEG1

(D)=2T75HLEG1-S
(E)=
(F)=

No.	Lev.	Parts No.	Description	Q'ty						I	R
				(A)	(B)	(C)	(D)	(E)	(F)		
1	1	104200-92350	DRIVER, SCREW	1	1						
2	1	121400-92690	BAG, TOOL	1	1						
2-1	1	104200-92600	BOX, TOOL	1	1	1	1				N
		(A=E# A1908) (B=E# A1869)									
3	1	28110-100130	SPANNER, 10X13	1	1						
3-1	1	28110-100120	SPANNER, 10X12	1	1	1	1				S
		(A=E# A1908) (B=E# A1869)									
4	1	28110-170190	SPANNER, 17X19		1	1					
4-1	1	28110-140170	SPANNER, 14X17		1	1	1	1			S
		(A=E# A1908) (B=E# A1869)									
5	1	28110-220240	SPANNER, 22X24		1	1					
5-1	1	28110-190220	SPANNER, 19X22		1	1	1	1			S
		(A=E# A1908) (B=E# A1869)									
6	1	28210-000140	OILER	1	1	1	1	1			
7	1	127610-92750	WRENCH, FILTER	1	1	1	1	1			W
		(A=E# A1908) (B=E# A1869)									
8	1	724500-92600	GASKET SET	1	1	1	1	1			
9	2	124500-01331	GASKET, HEAD	1	1	1	1	1			
10	2	121575-01511	GASKET, GEAR CASE	1	1	1	1	1			
11	2	124500-01750	GASKET, OIL SUMP	1	1	1	1	1			
12	2	121575-01861	GASKET	1	1	1	1	1			
13	2	124240-01883	GASKET	1	1	1	1	1			
14	2	124500-12710	GASKET, MANIFOLD	1	1	1	1	1			
15	2	121000-13201	GASKET, SILENCER	1	1	1	1	1			
16	2	124500-13520	GASKET	1	1	1	1	1			
17	2	121450-32021	GASKET, PUMP	1	1	1	1	1			
18	2	121450-44410	GASKET	1	1	1	1	1			
19	2	121000-42051	GASKET, WATER PUMP	1	1	1	1	1			
20	2	129350-49541	GASKET	1	1	1	1	1			
21	2	102103-55520	O-RING	1	1	1	1	1			
22	2	24341-001350	O-RING, 1AS135.0	1	1	1	1	1			
23	2	24341-000400	O-RING, 1AS40.0	1	1	1	1	1			
24	2	121550-11451	GASKET, CHAMBER	4	4	4	4	4			
25	2	124465-44950	GASKET, 16	1	1	1	1	1			