

# PARTS LIST

## HEDGE TRIMMERS

# HT2310 CHT2310

### NOTE :

1. Use ZENOAH genuine parts specified in the parts list for repair and/or replacement.
2. ZENOAH does not warrant the machines, those which have been damaged by the use of any parts other than those specified by the company.
3. When placing orders of parts for repair and/or replacement, check if the model name and the serial number are suitable to those specified in the parts list, then use parts number described in the parts list.
4. The contents described in the parts list may change due to improvement.
5. The parts for the machine shall be supplied within ten (10) years after the machine is discontinued. [It is possible that some specific parts may be subject to change of their delivery term and list price within the limit of ten (10) years after the machine is discontinued. And it is also possible that some parts may be available even after the limit of ten (10) years.]

### APPLICABLE SERIAL NUMBERS: **HT2310**

DRIVE UNIT 70300101 and up  
ENGINE UNIT 70300101 and up

September 2007

### APPLICABLE SERIAL NUMBERS: **CHT2310**

DRIVE UNIT 70300101 and up  
ENGINE UNIT 70300101 and up

Fig. 1 CUTTER GROUP HT2310

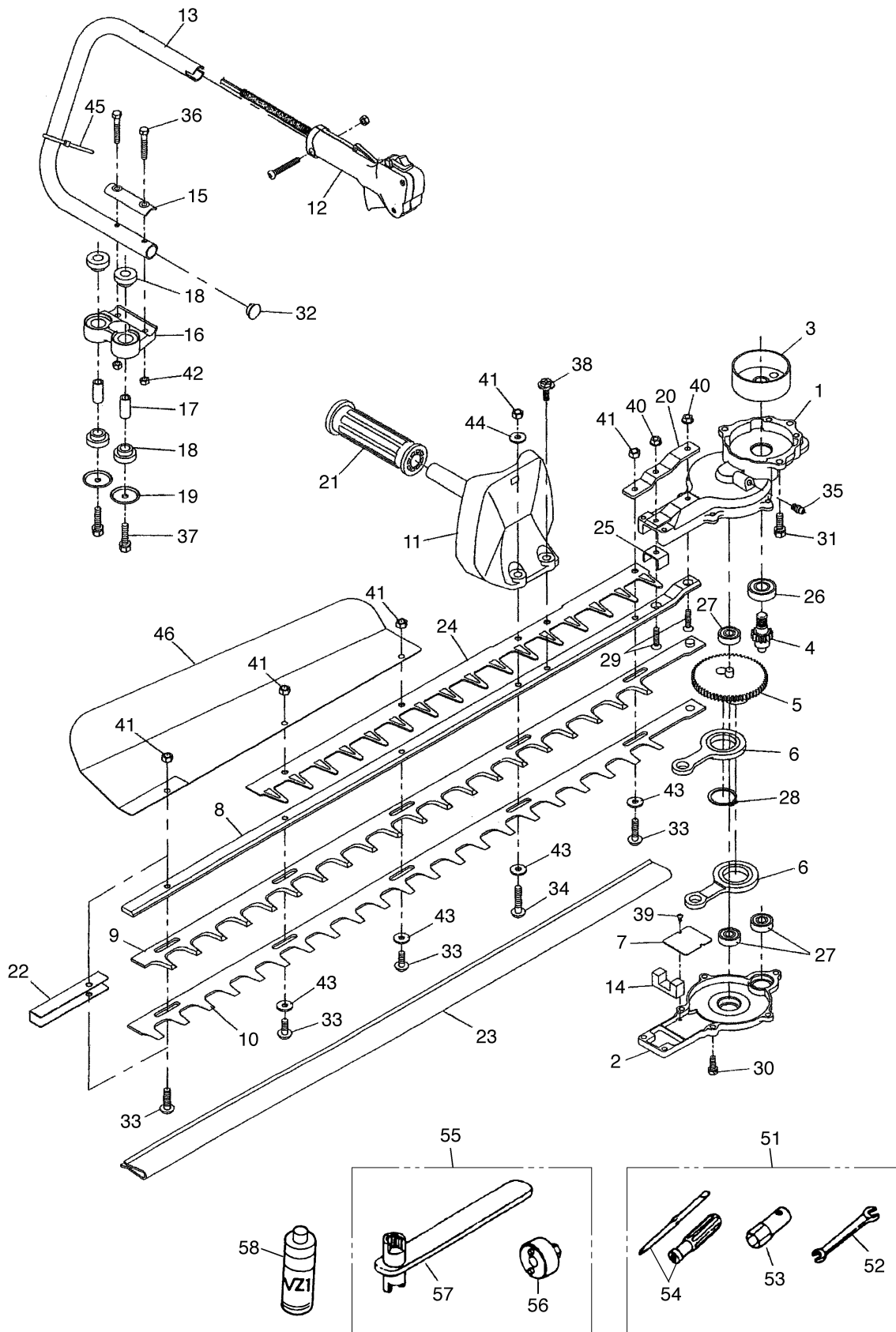


Fig. 1 CUTTER GROUP HT2310

Key#	PART NUMBER	DESCRIPTION	Q'TY /UNIT	NOTE	Key#	PART NUMBER	DESCRIPTION	Q'TY /UNIT	NOTE
1	848D0461A0	CRANK CASE UPPER	1		52	3540-91120	• SPANNER	1	
2	T4010-11210	CRANK CASE LOWER	1		53	1110-91320	• SOCKET	1	
3	3884-11410	DRUM	1		54	1030-91340	• SCREWDRIVER	1	
4	3884-11420	PINION GEAR	1		55	3880-95100	WRENCH ASS'Y	1	OPTIONAL
5	6830-11400	CRANK GEAR	1		56	3880-95010	• WRENCH	1	OPTIONAL
6	3873-11500	ROD	2		57	3880-95020	• WRENCH B	1	OPTIONAL
7	3880-11340	SLIDE PLATE	1		58	3884-96210	BLADE OIL	1	OPTIONAL
8	3883-11610	GUIDE PLATE	1						
9	3880-11720	UPPER BLADE	1						
10	3880-11730	LOWER BLADE	1						
11	6844-12100	RIGHT HANDLE	1						
12	OCR034004700	THROTTLE LEVER	1						
13	OCTE22029010	LEFT HANDLE	1						
14	T4010-11320	FELT	1						
15	6095-13310	HANDLE HOLD PLATE	1						
16	6095-13320	HANDLE STAND	1						
17	3887-13340	SPASER	2						
18	3887-13330	ANTIVIBRATION RUBBER	4						
19	3887-13380	RUBBER HOLD PLATE	2						
20	T4010-11670	REINFORCE PLATE	1						
21	3880-13121	GRIP	1						
22	3880-11750	REINFORCE PLATE	1						
23	3880-91140	BLADE COVER	1						
24	T4005-32410	BLADE GURDE	1						
25	T4010-13220	SHAKE SUTOPPER	1						
26	06004-06001	BEARING UU 6001	1						
27	06009-00608	BEARING ZZ 608	3						
28	04064-02512	SNAP RING SRW26	1						
29	OCK011050205	SCREW M5x20	2						
30	0225-10516	BOLT M5x16	7						
31	0225-10616	BOLT M5x16	3						
32	OCA286116004	BUSH	1						
33	3884-1160-10	SCREW L=22	4						
34	6095-11810-10	SCREW L=29	1						
35	3199-13350	GREASE NIPPLE	1						
36	8488452800	BOLT M5x28	2						
37	0225-10635	BOLT M6x35	2						
38	OCK055060201	BOLT M6x20	1						
39	0260-00305	SCREW M3x5	2						
40	3880-11140	FLANGE NUT M5	2						
41	3880-11790	U-NUT M6	5						
42	3876-14470	NUT M5	2						
43	3880-11780	WASHER	4						
44	OCK207060140	WASHER	1						
45	3880-13350	BAND (CV-15)	1						
46	3880-91110	LEAF RECEIVE PLATE	1						
51	1111-91003	TOOL SET	1						

Fig. 2 ENGINE GROUP HT2310

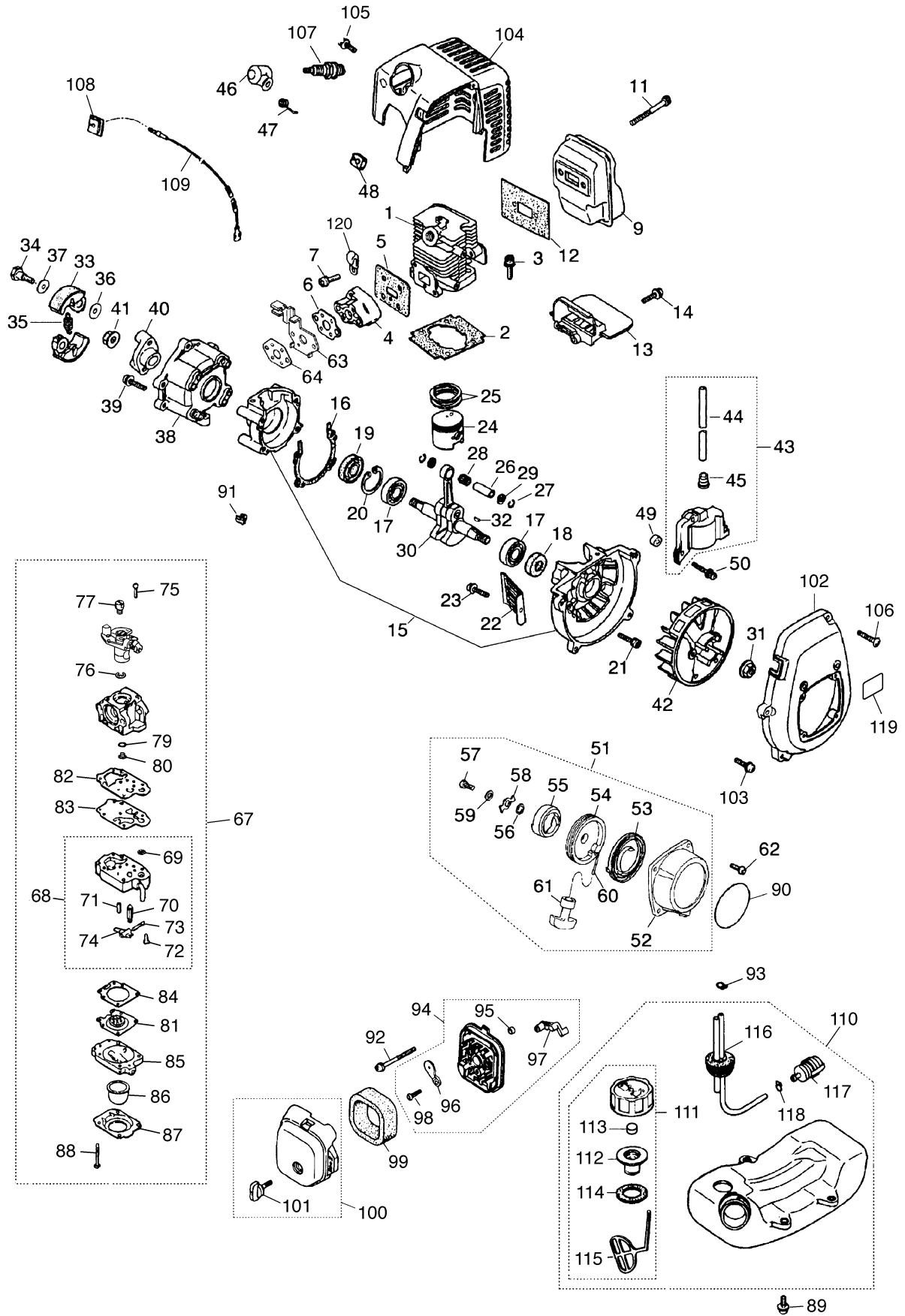
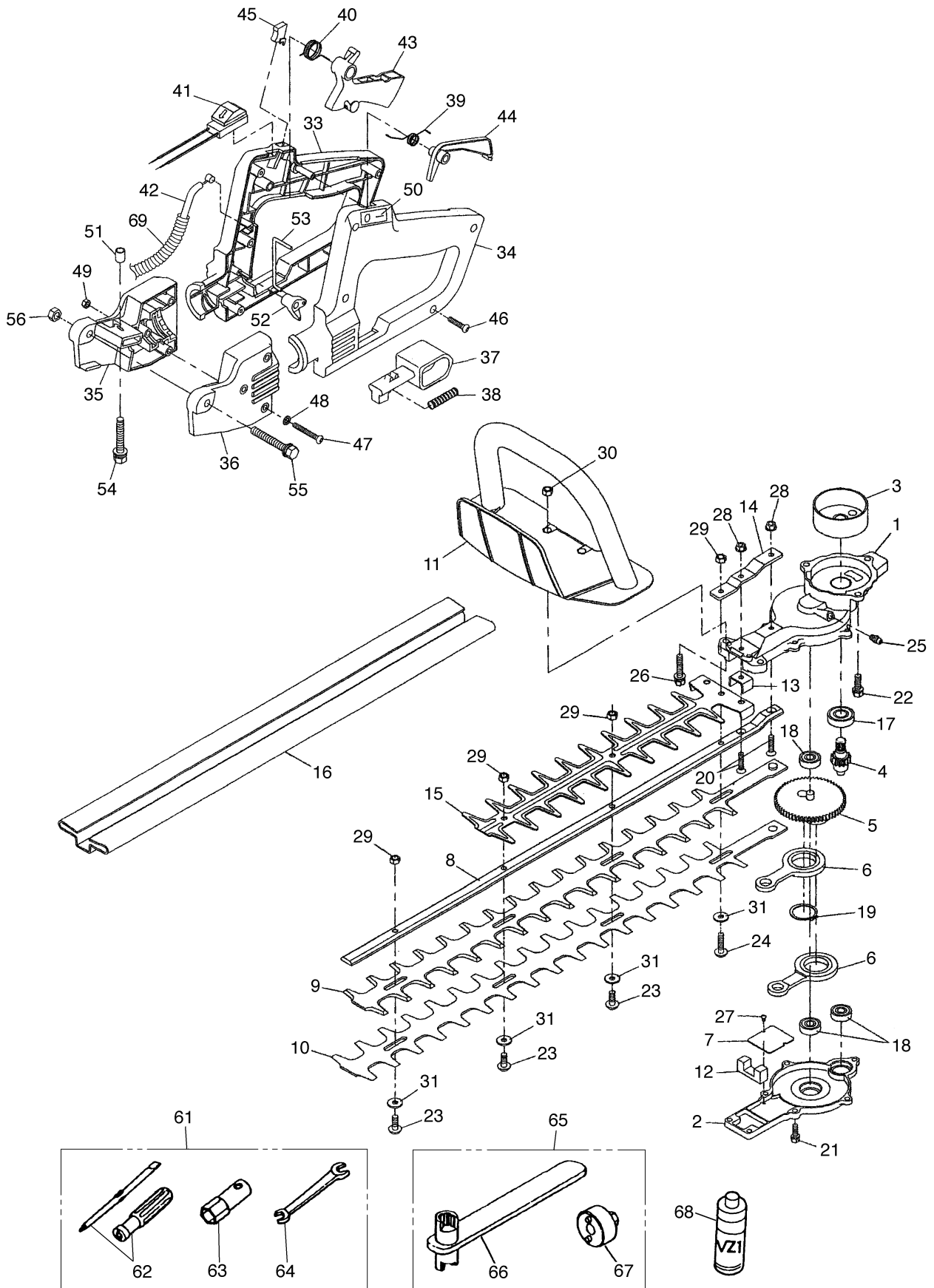


Fig. 2 ENGINE GROUP HT2310

Key#	PART NUMBER	DESCRIPTION	Q'TY /UNIT	NOTE	Key#	PART NUMBER	DESCRIPTION	Q'TY /UNIT	NOTE
1	5602-12110	Cylinder	1		62	0263-90412	Screw	4	
2	5500-12213	Gasket, base	1		63	5628-83221	Bracket	1	
3	1850-12130	Bolt M5x22	2		64	5500-13131	Gasket, carburetor	1	
4	5500-13163	Insulator	1		67	5602-81001	Carburetor ass'y	1	WYL-118
5	5500-13121	Gasket, insulator	1		68	1850-81450	• Body ass'y	1	
6	5500-13131	Gasket, Carb	1		69	3306-81380	•• Screen	1	
7	0263-90520	Screw M5x20	2		70	3356-81310	•• Valve	1	
9	5601-15110	Muffler	1		71	1850-81270	•• Spring	1	
11	01252-30550	Bolt M5x50	2		72	1850-81220	•• Screw	1	
12	5600-15210	Gasket, muffler	1		73	3310-81250	•• Pin	1	
13	5600-15220	Plate, muffler	1		74	3310-81230	•• Lever	1	
14	0263-90416	Screw M4x16	1		75	5850-81110	• Screw	2	
15	5600-21100	Crankcase comp.	1		76	1751-81130	• Ring	1	
16	5500-21141	Gasket, muffler	1		77	1881-81140	• Swivel	1	
17	06030-06001	Bearing	2		79	1751-81240	• O-ring	1	
18	2169-21210	Oil seal	1		80	5628-81250	• Jet	1	
19	1850-21220	Oil seal	1		81	3310-81260	• Diaphragm	1	
20	04065-02812	Snap ring	1		82	1065-81410	• Gasket, pump	1	
21	01252-30530	Bolt M5x30	4		83	1065-81420	• Diaphragm, pump	1	
22	5500-22110	Guard	1		84	1850-81470	• Gasket, diaphragm	1	
23	0263-90514	Screw M5x14	1		85	1850-81490	• Body, purge	1	
24	5600-41111	Piston	1		86	1751-81510	• Pump, priming	1	
25	1100-41210	Ring, piston	2		87	1850-81520	• Cover, pump	1	
26	1101-41310	Pin, piston	1		88	1850-81530	• Screw	4	
27	1260-41320	Snap ring	2		89	5500-85510	Screw	3	
28	5500-41410	Bearing	1		90	848-E7N-90C0	Label, recoil	1	
29	1101-41340	Washer	2		91	1601-81810	Cap	1	
30	5600-42001	Crankshaft comp.	1		92	0263-90560	Screw M5x60	2	
31	1650-43230	Nut	1		93	1950-86120	Clip	1	
32	1000-43240	Key	1		94	T1600-82100	Body assy	1	
33	1140-51111	Shoe	2		95	1970-82190	• Sleeve	2	
34	1140-51250	Screw	2		96	T1600-82130	• Plate, choke	1	
35	1600-51223	Spring	1		97	T1600-82140	• Lever, choke	1	
36	1140-51230	Washer	2		98	2630-33610	• Screw	1	
37	1970-51241	Washer	2		99	5500-82171	Element	1	
38	5600-52110	Case, clutch	1		100	5600-82203	Cover assy	1	
39	0263-90516	Screw M5x16	4		101	5500-82221	• Knob	1	
40	5600-52150	Plate, clutch	1		102	5600-31110	Cover, fan	1	
41	1650-43230	Nut	1		103	0263-90520	Screw M5x20	4	
42	5601-71110	Rotor	1		104	5600-32101	Cover, engine	1	
43	5600-71200	Coil ass'y	1		105	1850-32160	Screw M5x12	1	
44	5600-71220	• Cord	1		106	1900-31410	Screw	1	
45	2616-71320	• Cap	1		107	5933-73110	Spark plug	1	BPMR7A
46	5500-72110	Cap, spark plug	1		108	1852-72121	Grommet	1	
47	1900-72120	Spring	1		109	848-8M0-0200	Cord comp	1	
48	5500-72130	Grommet	1		110	5607-85002	Tank ass'y	1	
49	1260-71261	Spacer	2		111	5607-85201	• Cap ass'y	1	
50	3310-72150	Bolt M4x25	2		112	5601-85300	•• Holder ass'y	1	
51	5990-75102	Recoil ass'y	1		113	5601-85260	•• Filter	1	
52	5990-75110	• Case, recoil	1		114	5500-85220	•• Packing	1	
53	5990-75120	• Spring, spiral	1		115	4820-85260	•• Stopper	1	
54	5990-75131	• Reel	1		116	5500-85300	• Pipe comp.	1	
55	5990-75141	• Ratchet	1		117	5500-85400	• Filter ass'y	1	
56	5990-75151	• Spring	1		118	1260-85460	• Clip	1	
57	5990-75270	• Screw	1		119	T2990-21080	Label 108DB	1	
58	5990-75160	• Retainer	1		120	2750-72230	Clamp	1	
59	5990-75170	• Washer	1						
60	1861-75180	• Rope	1						
61	1490-75181	• Knob	1						

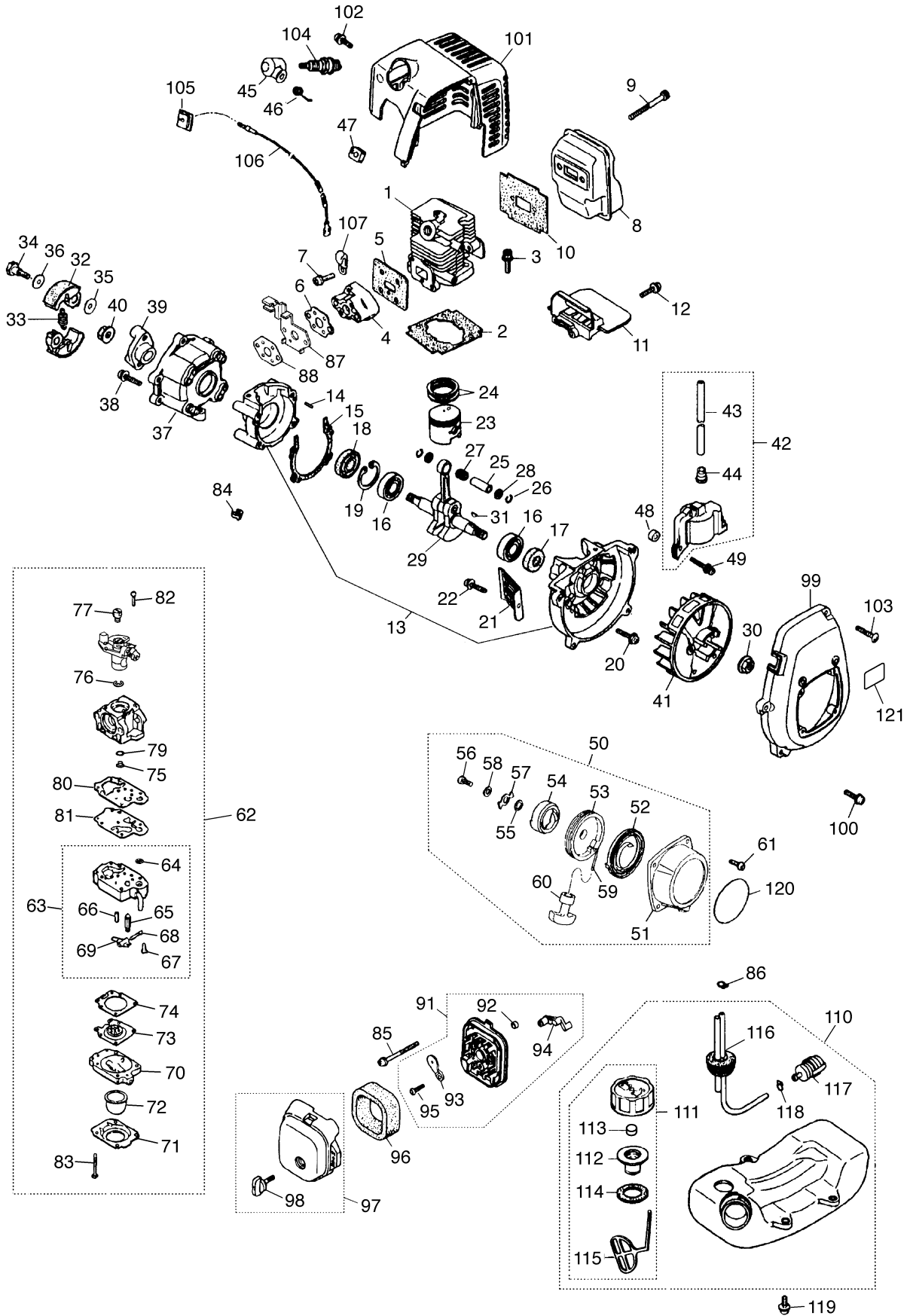
Fig. 3 CUTTER GROUP CHT2310



**Fig. 3 CUTTER GROUP CHT2310**

Key#	PART NUMBER	DESCRIPTION	Q'TY /UNIT	NOTE	Key#	PART NUMBER	DESCRIPTION	Q'TY /UNIT	NOTE
1	848-D04-61A0	CRANK CASE UPPER	1		49	OCK150040000	NUT M4	3	
2	T4010-11210	CRANK CASE LOWER	1		50	OCA052175004	STOP SWITCH LABEL	1	
3	3884-11410	DRUM	1		51	OCK232061000	SPACER 6x10.0	1	
4	3884-11420	PINION GEAR	1		52	OCA361100054	STOPPER	1	
5	6830-11400	CRANK GEAR	1		53	OCA361100064	ROD	1	
6	3873-11500	ROD	2		54	OCK055060400	BOLT M6x40	1	
7	3880-11340	SLIDE PLATE	1		55	OCK055060600	BOLT M6x60	1	
8	OC118126	GUIDE PLATE	1		56	OCK151060000	NUT M6	1	
9	3873-11720	UPPER BLADE	1						
10	3873-11730	LOWER BLADE	1		61	1111-91003	TOOL SET	1	
11	T4002-33110	FRONT HANDLE	1		62	1030-91340	• SCREWDRIVER	1	
12	T4010-11320	FELT	1		63	1110-91320	• SOCKET, HEX 3/4"	1	
13	T4010-13220	SHAKE SUTOPPER	1		64	3540-91120	• SPANNER, 8x10	1	
14	T4010-11670	REINFORCE PLATE	1		65	3880-95100	WRENCH ASS'Y	1	OPTIONAL
15	T4006-32410	BLADE GURDE	1		66	3880-95020	• WRENCH B	1	OPTIONAL
16	6836-91140	BLADE COVER	1		67	3880-95010	• WRENCH	1	OPTIONAL
17	06004-06001	BEARING UU 6001	1		68	3884-96210	BLADE OIL	1	OPTIONAL
18	06009-00608	BEARING ZZ 608	3		69	848-8H1-1701	TUBE	1	
19	04064-02512	SNAP RING SRW26	1						
20	OCK011050205	SCREW M5x20	2						
21	0225-10516	BOLT M5x16	7						
22	0225-10616	BOLT M5x16	2						
23	3884-11750	SCREW L=19	3						
24	3884-11660	SCREW L=22	1						
25	3199-13350	GREASE NIPPLE	1						
26	0225-10635	BOLT M6x35	2						
27	0260-00305	SCREW M3x5	2						
28	3880-11140	FLANGE NUT M5	2						
29	3880-11790	U-NUT M6	4						
30	3880-11790	U-NUT M6	2						
31	3880-11780	WASHER	4						
33	OCA361100011	REAR HANDLE R	1						
34	OCA361100021	REAR HANDLE L	1						
35	OCA330100032	HANDLE STAY R	1						
36	OCA330100042	HANDLE STAY L	1						
37	OCA361100034	LOCK PIN	1						
38	OCA002050004	SPRING	1						
39	OCA003023004	SPRING	1						
40	OCA003024004	SPRING	1						
41	OCA005097004	SLIDE SWITCH	1						
42	OCG010000980	THROTTLE CABLE	1						
43	OCA361100043	THROTTLE LEVER	1						
44	OCA287107004	LOCK LEVER	1						
45	OCA287110004	STOPPER A	1						
46	OCK110401600	TAPPING SCREW 4.0x16	5						
47	OCK010040400	SCREW M4x40	3						
48	OCK216040000	WASHER M4	3						

Fig. 4 ENGINE GROUP CHT2310





**Fig. 4 ENGINE GROUP CHT2310**

Key#	PART NUMBER	DESCRIPTION	Q'TY /UNIT	NOTE	Key#	PART NUMBER	DESCRIPTION	Q'TY /UNIT	NOTE
1	5602-12110	Cylinder	1		62	5602-81001	Carburetor ass'y	1	WYL-118
2	5500-12213	Gasket, base	1		63	1850-81450	• Body ass'y	1	
3	1850-12130	Bolt M5x22	2		64	3306-81380	•• Screen	1	
4	5500-13163	Insulator	1		65	3356-81310	•• Valve	1	
5	5500-13121	Gasket, insulator	1		66	1850-81270	•• Spring	1	
6	5500-13131	Gasket, carb	1		67	1850-81220	•• Screw	1	
7	0263-90520	Screw M5x20	2		68	3310-81250	•• Pin	1	
8	5601-15110	Muffler	1		69	3310-81230	•• Lever	1	
9	01252-30550	Bolt M5x50	2		70	1850-81490	• Body	1	
10	5600-15210	Gasket, muffler	1		71	1850-81520	• Cover	1	
11	5600-15220	Plate, muffler	1		72	1751-81510	• Pump	1	
12	0263-90416	Screw M4x16	1		73	3310-81260	• Diaphragm	1	
13	5600-21100	Crancase comp	1		74	1850-81470	• Gasket	1	
14	2629-21130	• Pin	3		75	5628-81250	• Jet	1	
15	5500-21141	Gasket, case	1		76	1751-81130	• Ring	1	
16	06030-06001	Bearing	2		77	1881-81140	• Swivel	1	
17	2169-21210	Oil seal	1		79	1751-81240	• O-ring	1	
18	1850-21220	Oil seal	1		80	1065-81410	• Gasket	1	
19	04065-02812	Snap ring	1		81	1065-81420	• Diaphragm	1	
20	01252-30530	Bolt M5x30	4		82	5850-81110	• Screw	2	
21	5500-22110	Guard	1		83	1850-81530	• Screw	4	
22	0263-90514	Screw M5x14	1		84	1601-81810	Cap	1	
23	5600-41111	Piston	1		85	0263-90560	Screw M5x70	2	
24	1100-41210	Ring, piston	2		86	1950-86120	Clip	1	
25	1101-41310	Pin, piston	1		87	5628-83221	Bracket	1	
26	1260-41320	Snap ring	2		88	5500-13131	Gasket	1	
27	5500-41410	Bearing	1		91	T1600-82100	Body assy	1	
28	1101-41340	Washer	2		92	1970-82190	• Sleeve	2	
29	5600-42001	Crankshaft comp	1		93	T1600-82130	• Plate, choke	1	
30	1650-43230	Nut	1		94	T1600-82140	• Lever, choke	1	
31	1000-43240	Key	1		95	2630-33610	• Screw	1	
32	1140-51111	Shoe	2		96	5500-82171	Element	1	
33	1600-51223	Spring	1		97	5600-82203	Cover assy	1	
34	1140-51250	Screw	2		98	5500-82221	• Knob	1	
35	1140-51230	Washer	2		99	5600-31110	Cover, fan	1	
36	1970-51241	Washer	2		100	0263-90520	Screw M5x20	1	
37	5600-52110	Case, clutch	1		101	5600-32101	Cover, ass'y	1	
38	0263-90516	Screw M5x16	4		102	1850-32160	Screw M5x12	1	
39	5600-52150	Plate, clutch	1		103	1900-31410	Screw	1	
40	1650-43230	Nut	1		104	5933-73110	Spark plug	1	BPMR7A
41	5601-71110	Rotor	1		105	1852-72121	Grommet	1	
42	5600-71200	Coil ass'y	1		106	848-8M0-0200	Cord comp	1	
43	5600-71220	• Cord	1		107	2750-72230	Clamp	1	
44	2616-71320	• Cap	1		110	5607-85002	Tank ass'y	1	
45	5500-72110	Cap, spark plug	1		111	5607-85201	• Cap ass'y	1	
46	1900-72120	Spring	1		112	5601-85300	•• Holder ass'y	1	
47	5500-72130	Grommet	1		113	5601-85260	•• Filter	1	
48	1260-71261	Spacer	2		114	5500-85220	•• Packing	1	
49	3310-72150	Bolt M4x25	2		115	4820-85260	•• Stopper	1	
50	5990-75102	Recoil ass'y	1		116	5500-85300	• Pipe, comp	1	
51	5990-75110	• Case, recoil	1		117	5500-85400	• Filter ass'y	1	
52	5990-75120	• Spring, Spiral	1		118	1260-85460	• Clip	1	
53	5990-75131	• Reel	1		119	5500-85510	Screw M5x16	3	
54	5990-75141	• Ratchet	1		120	848E7P90C0	Label, recoil	1	
55	5990-75151	• Spring	1		121	T2990-21060	Label	1	
56	5990-75270	• Screw	1						
57	5990-75160	• Retainer	1						
58	5990-75170	• Washer	1						
59	1861-75180	• Rope	1						
60	1490-75181	• Knob	1						
61	0263-90412	Screw M4x12	4						